

UNITED STATES
DEPARTMENT OF THE INTERIOR
BUREAU OF LAND MANAGEMENT

APPLICATION FOR PERMIT TO DRILL, DEEPEN, OR PLUG BACK

1a. TYPE OF WORK
DRILL ☒ DEEPEN ☐ PLUG BACK ☐

b. TYPE OF WELL
OIL WELL ☐ GAS WELL ☒ OTHER ☐
SINGLE ZONE ☒ MULTIPLE ZONE ☐

2. NAME OF OPERATOR
Amoco Production Company

3. ADDRESS OF OPERATOR
501 Airport Drive, Farmington, NM 87401

4. LOCATION OF WELL (Report location clearly and in accordance with any State requirements.)
At surface
1940' FSL X 725' FWL
At proposed prod. zone
same

14. DISTANCE IN MILES AND DIRECTION FROM NEAREST TOWN OR POST OFFICE*
17 miles North of Counselor, New Mexico

15. DISTANCE FROM PROPOSED*
LOCATION TO NEAREST
PROPERTY OR LEASE LINE, FT.
(Also to nearest drlg. unit line, if any) 725'

16. NO. OF ACRES IN LEASE
2477.56

17. NO. OF ACRES ASSIGNED
TO THIS WELL
160 approved Unorthodox

18. DISTANCE FROM PROPOSED LOCATION*
TO NEAREST WELL, DRILLING, COMPLETED,
OR APPLIED FOR, ON THIS LEASE, FT.
350' South 5392'

19. PROPOSED DEPTH
5392'

20. ROTARY OR CABLE TOOLS
Rotary

21. ELEVATIONS (Show whether DF, RT, GR, etc.)
6624' GR

22. APPROX. DATE WORK WILL START*
As soon as permitted

23. PROPOSED CASING AND CEMENTING PROGRAM

24. This action is subject to administrative
appeal pursuant to 30 CFR 290.

SIZE OF HOLE	SIZE OF CASING	WEIGHT PER FOOT	SETTING DEPTH
12-1/4"	8-5/8"	24#, K-55	300'
7-7/8"	4-1/2"	10.5#, K-55	5392'

Note 1: 1st stage - 400 ft³ 50:50 poz tail in with 118 ft³ 'B' neat; 2nd stage -
1164 ft³ 65:35 poz tail in with 118 ft³ 'B' neat

Amoco proposes to drill the above well to further develop the Blanco Mesa Verde reservoir. The well will be drilled to the surface casing point using native mud. The well will then be drilled to TD with a low solids nondispersed mud system. Completion design will be based on open hole logs. Copy of all logs will be filed upon completion. Amoco's standard blowout prevention will be employed; see attached drawing for blowout preventer design. Upon completion the well site will be cleaned and the reserve pit filled and leveled. The gas from this well is dedicated to Northwest Pipeline under contract no. 108394.

RECEIVED

MAR 19 1984

OIL CON. DIV.

IN ABOVE SPACE DESCRIBE PROPOSED PROGRAM: If proposal is to deepen or plug back, give data on present productive zone and proposed new productive zone. If proposal is to drill or deepen directionally, give pertinent data on subsurface locations and measured and true depths. Give blowout preventer program, if any.

24. SIGNED BD Shaw TITLE Administrative Supervisor

(This space for Federal or State office use)

PERMIT NO. APPROVAL DATE

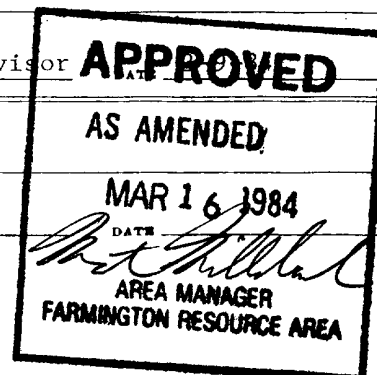
APPROVED BY TITLE

CONDITIONS OF APPROVAL, IF ANY:

NSL 1730
NSP-1400 ch 2

NMOCC

*See Instructions On Reverse Side



OIL CONSERVATION DIVISION

STATE OF NEW MEXICO
ENERGY AND MINERALS DEPARTMENTP. O. BOX 2088
SANTA FE, NEW MEXICO 87501Form C-107
Revised 10-1-71

All distances must be from the outer boundaries of the Section.

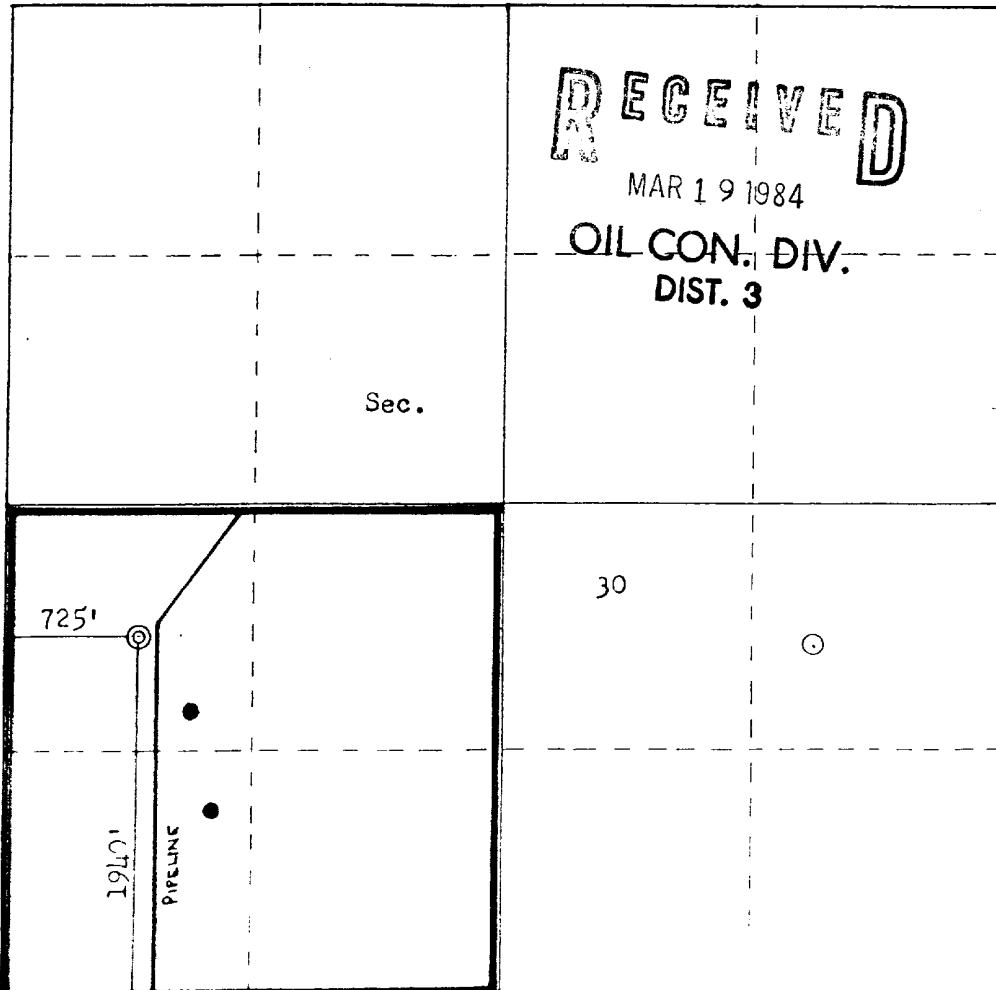
Operator AMOCO PRODUCTION COMPANY			Lease JICARILLA CONTRACT 155		Well No. 35
Unit Letter L	Section 30	Township 26N	Range 5W	County Rio Arriba	
Actual Footage Location of Well: 1940 feet from the South line and 725 feet from the West line					
Ground Level Elev. 6624	Producing Formation Mesaverde		Pool (Gonzales Mesaverde) Blanco Mesaverde		Dedicated Acreage: 160 Acres

1. Outline the acreage dedicated to the subject well by colored pencil or hachure marks on the plat below.
2. If more than one lease is dedicated to the well, outline each and identify the ownership thereof (both as to working interest and royalty).
3. If more than one lease of different ownership is dedicated to the well, have the interests of all owners been consolidated by communitization, unitization, force-pooling, etc?

☐ Yes ☐ No If answer is "yes," type of consolidation _____

If answer is "no," list the owners and tract descriptions which have actually been consolidated. (Use reverse side of this form if necessary.) _____

No allowable will be assigned to the well until all interests have been consolidated (by communitization, unitization, forced-pooling, or otherwise) or until a non-standard unit, eliminating such interests, has been approved by the Commission.



CERTIFICATION

I hereby certify that the information contained herein is true and complete to the best of my knowledge and belief.

Dale H. Shoemaker

Name
D.H. Shoemaker

Position
District Engineer

Company
Amoco Production Co.

Date
8-1-83

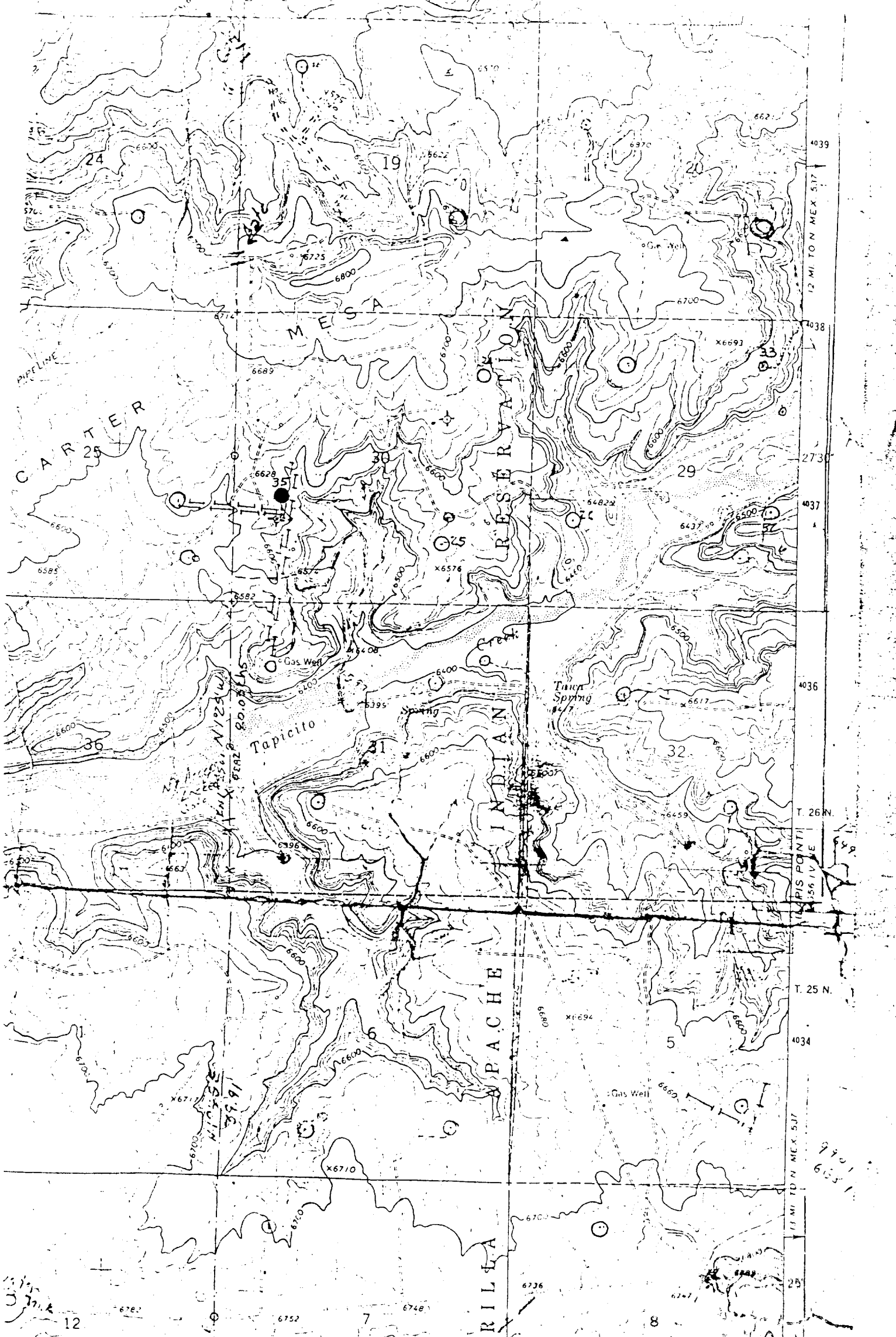
I hereby certify that the well location shown on this plat was plotted from field notes of actual surveys made by me or under my supervision, and that the same is true and correct to the best of my knowledge and belief.

Date Surveyed
May 10, 1983

Registered Professional Engineer
and Land Surveyor
Fred B. Kerr Jr.
Fred B. Kerr Jr.

1950

Scale: 1"=1000'



Vicinity Map for
AMOCO PRODUCTION CO. #35 JICARILLA CONTRACT 155
1940' FSL 725' FWL Sec. 30-T26N-5W
RIO ARRIBA COUNTY, NEW MEXICO