

UNITED STATES
DEPARTMENT OF THE INTERIOR
BUREAU OF LAND MANAGEMENT

APPLICATION FOR PERMIT TO DRILL, DEEPEN, OR PLUG BACK

1a. TYPE OF WORK

DRILL ☒

DEEPEN ☐

PLUG BACK ☐

b. TYPE OF WELL

OIL
WELL ☒

& GAS
WELL ☒

OTHER

SINGLE
ZONE ☐

MULTIPLE
ZONE ☒

2. NAME OF OPERATOR

Amoco Production Company

3. ADDRESS OF OPERATOR

501 Airport Drive, Farmington, NM 87401

4. LOCATION OF WELL (Report location clearly and in accordance with any State requirements.)*

At surface

1760' FNL X 790' FEL

At proposed prod. zone Same

14. DISTANCE IN MILES AND DIRECTION FROM NEAREST TOWN OR POST OFFICE*

39 miles northeast of Counselor, New Mexico

15. DISTANCE FROM PROPOSED*

LOCATION TO NEAREST
PROPERTY OR LEASE LINE, FT.
(Also to nearest drlg. unit line, if any)

790'

16. NO. OF ACRES IN LEASE

2566.44

17. NO. OF ACRES ASSIGNED
TO THIS WELL

437.40

18. DISTANCE FROM PROPOSED LOCATION*
TO NEAREST WELL, DRILLING, COMPLETED,
OR APPLIED FOR, ON THIS LEASE, FT.

2640' S

19. PROPOSED DEPTH

8565'

20. ROTARY OR CABLE TOOLS

Rotary

21. ELEVATIONS (Show whether DF, RT, or GR)

7501' GR

DRILLING OPERATIONS AUTHORIZED ARE
SUBJECT TO COMPLIANCE WITH ATTACHED
"GENERAL REQUIREMENTS"
PROPOSED CASING AND CEMENTING PROGRAM

22. APPROX. DATE WORK WILL START*

As soon as permitted

This action is subject to administrative
appeal pursuant to 30 CFR 290.

SIZE OF HOLE	SIZE OF CASING	WEIGHT PER FOOT	SETTING DEPTH	QUANTITY OF CEMENT
12-1/4"	9-5/8"	32.3#, K-55	300'	372 cu. ft. Class B Neat w/2%CaCl ₂
7-7/8"	5-1/2"	15.5#, K-55	8565'	Stage 1:460 cu. ft. Class B 50:50 POZ w/118 cu. ft. Class B Neat Tail in. Stage 2:1540 cu. ft. Class B 65:35 POZ w/118 cu. ft. Class B Neat Tail in.

Amoco proposes to drill the above well to further develop the Undesignated Gallup and undesignated Dakota reservoir. The well will be drilled to the surface casing point using native mud. The well will then be drilled to TD with a low solids nondispersed mud system. Completion design will be based on open hole logs. Copy of all logs will be filed upon completion. Amoco's standard blowout prevention will be employed; see attached drawing for blowout preventer design. Upon completion the well site will be cleaned and the reserve pit filled and leveled. The gas from this well is undedicated at this time.

IN ABOVE SPACE DESCRIBE PROPOSED PROGRAM: If proposal is to deepen or plug back, give data on present productive zone and proposed new productive zone. If proposal is to drill or deepen directionally, give pertinent data on subsurface locations and measured and true vertical depths. Give blowout preventer program, if any.

24.

Original Signed By
B. D. [Signature]

SIGNED

Administrative Supervisor

AS AMENDED
SEP 11 1984

(This space for Federal or State office use)

SEP 13 1984

PERMIT NO.

APPROVAL DATE

APPROVED BY

CONDITIONS OF APPROVAL, IF ANY:

OIL CON. DIV.
DIST. 3

TITLE

ASST. AREA MANAGER
FARMINGTON RESOURCE AREA

*See Instructions On Reverse Side

OIL CONSERVATION DIVISION

STATE OF NEW MEXICO

P. O. BOX 2088

Form C-107

ENERGY AND MINERALS DEPARTMENT

SANTA FE, NEW MEXICO 87501

Revised 10-1-7

All distances must be from the outer boundaries of the Section.

Operator AMOCO PRODUCTION COMPANY		Lease JICARILLA APACHE A-118		Well No. 10
Unit Letter H	Section 35	Township 26N	Range 3W	County Rio Arriba
Actual Footage Location of Well: 1760 feet from the North line and 790 feet from the East line				
Ground Level Elev: 7501	Producing Formation Gallup and Dakota		Pool Undes. Gallup/Undes. Dakota	Dedicated Acreage: 68/40 Acres

1. Outline the acreage dedicated to the subject well by colored pencil or hachure marks on the plat below.
2. If more than one lease is dedicated to the well, outline each and identify the ownership thereof (both as to working interest and royalty).
3. If more than one lease of different ownership is dedicated to the well, have the interests of all owners been consolidated by communitization, unitization, force-pooling, etc?

☐ Yes ☒ No If answer is "yes," type of consolidation _____

If answer is "no," list the owners and tract descriptions which have actually been consolidated. (Use reverse side of this form if necessary.) _____

No allowable will be assigned to the well until all interests have been consolidated (by communitization, unitization, forced-pooling, or otherwise) or until a non-standard unit, eliminating such interests, has been approved by the Commission.

Sec.		1760'	
		790'	
RECEIVED SEP 13 1984 OIL CON. DIV. DIST. 3		35	

Scale: 1"=1000'

CERTIFICATION

I hereby certify that the information contained herein is true and complete to the best of my knowledge and belief.

Original Signed By
B. D. Shaw

Name

B. D. Shaw

Position

Administrative Supervisor

Company

Amoco Production Company

Date

July 24, 1984

I hereby certify that the well location shown on this plat was plotted from field notes of actual surveys made by me or under my supervision, and that the same is true and correct to the best of my knowledge and belief.

Date Surveyed

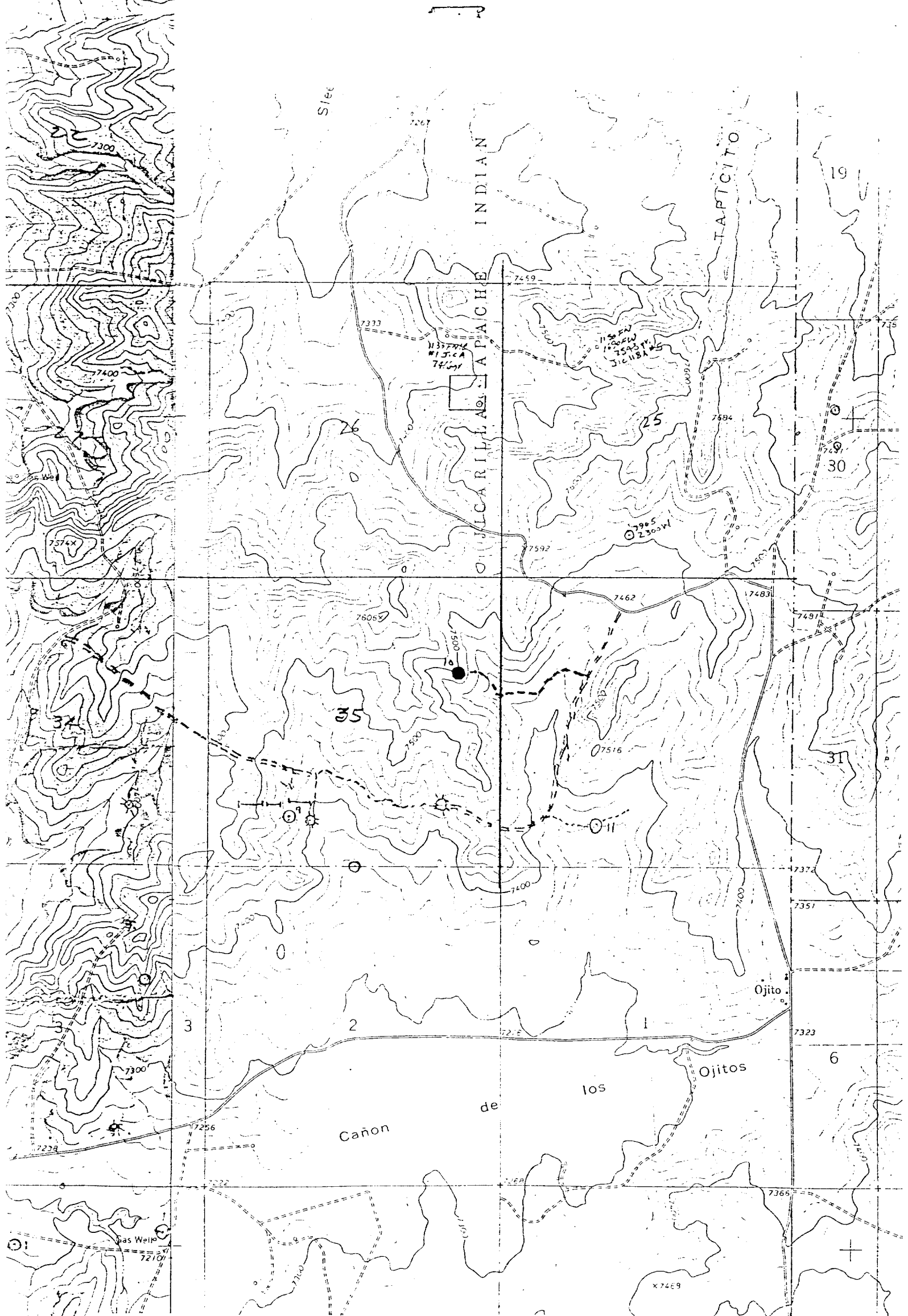
April 19, 1984

Registered Professional Engineer
and Land Surveyor

Fred B. Kery Jr.

Certificate No.

3950



Vicinity Map for
AMOCO PRODUCTION CO. #10 JICARILLA APACHE A-118
1760'FNL 790'FEL Sec. 35-T26N-R3W
RIO ARRIPEA COUNTY, NEW MEXICO