

UNITED STATES  
DEPARTMENT OF THE INTERIOR  
GEOLOGICAL SURVEY

## APPLICATION FOR PERMIT TO DRILL, DEEPEN, OR PLUG BACK

## 1a. TYPE OF WORK

DRILL ☒DEEPEN ☐PLUG BACK ☐

## b. TYPE OF WELL

OIL  
WELL ☐GAS  
WELL ☒

OTHER

SINGLE  
ZONE ☒MULTIPLE  
ZONE ☐

## 2. NAME OF OPERATOR

Curtis J. Little

## 3. ADDRESS OF OPERATOR

P. O. Box 1258

Farmington, NM 87499

## 4. LOCATION OF WELL (Report location clearly and in accordance with any State requirements.)

At surface

790' FSL &amp; 1845' FEL

At proposed prod. zone

same

## 14. DISTANCE IN MILES AND DIRECTION FROM NEAREST TOWN OR POST OFFICE

12 miles NE from Counselors, N.M.

## 10. DISTANCE FROM PROPOSED\*

LOCATION TO NEAREST

PROPERTY OR LEASE LINE, FT.

(Also to nearest drlg. unit line, if any)

1845' FEL

## 18. DISTANCE FROM PROPOSED LOCATION\*

TO NEAREST WELL, DRILLING, COMPLETED,  
OR APPLIED FOR, ON THIS LEASE, FT.

175'

## 16. NO. OF ACRES IN LEASE

1520/1920

## 19. PROPOSED DEPTH

6725' GL

17. NO. OF ACRES ASSIGNED  
TO THIS WELL

E-320

## 20. ROTARY OR CABLE TOOLS

Rotary

## 21. ELEVATIONS (Show whether DF, RT, GR, etc.)

6351' GR

## 22. APPROX. DATE WORK WILL START\*

5-15-85

DRILLING OPERATIONS AUTHORIZED ARE  
SUBJECT TO COMPLIANCE WITH ATTACHED

## PROPOSED CASING AND CEMENTING PROGRAM

This action is subject to technical and  
procedural review pursuant to 43 CFR 3165.3  
and appeal pursuant to 43 CFR 3165.4.

'GENERAL REQUIREMENTS'.

SIZE OF CASING	WEIGHT PER FOOT	SETTING DEPTH	QUANTITY OF CEMENT
12-1/4	8-5/8	24#	200'
7-7/8	4-1/2	10 1/2 #	6725'
			148 cf ..Circulate to surface
			2300cf to cover OjoAlamo

Propose to drill with mud, run mechanical logs, selectively  
perforate and sand/water frac.

The gas is dedicated to El Paso Natural Gas Company.

RECEIVED  
JUL 26 1985  
OIL CON. DIV.  
DIST. 3

IN ABOVE SPACE DESCRIBE PROPOSED PROGRAM: If proposal is to deepen or plug back, give data on present productive zone and proposed new productive zone. If proposal is to drill or deepen directionally, give pertinent data on subsurface locations and measured and true vertical depths. Give blowout preventer program, if any.

24.

SIGNED

Curtis J. Little

TITLE

Operator

DATE

6-24-85

(This space for Federal or State office use)

APPROVED  
AS AMENDED

PERMIT NO.

APPROVAL DATE

APPROVED BY

TITLE

DATE

JUL 24 1985

CONDITIONS OF APPROVAL, IF ANY:

Hold C-104 for operator name change  
JTB

/s/ J. Stan McKee

M. MILLENBACH  
AREA MANAGER

\*See Instructions On Reverse Side

ENCLOSURE

NEW MEXICO OIL CONSERVATION COMMISSION  
WELL LOCATION AND ACREAGE DEDICATION PLAT

Form C-102  
Supersedes C-128  
Effective 1-1-65

All distances must be from the outer boundaries of the Section.

Operator <b>CURTIS J. LITTLE</b>			Lease <b>SALAZAR - Federal</b>		Well No. <b>3E</b>
Unit Letter <b>0</b>	Section <b>27</b>	Township <b>25N</b>	Range <b>6W</b>	County <b>Rio Arriba</b>	
Actual Footage Location of Well: <b>790</b> feet from the <b>South</b> line and <b>1845</b> feet from the <b>East</b> line					
Ground Level Elev: <b>6351</b>	Producing Formation <b>Dakota</b>		Pool <b>Basin</b>		Dedicated Acreage: <b>1/2</b> 320 Acres

1. Outline the acreage dedicated to the subject well by colored pencil or hachure marks on the plat below.
2. If more than one lease is dedicated to the well, outline each and identify the ownership thereof (both as to working interest and royalty).
3. If more than one lease of different ownership is dedicated to the well, have the interests of all owners been consolidated by communitization, unitization, force-pooling, etc?

☐ Yes ☐ No If answer is "yes," type of consolidation \_\_\_\_\_

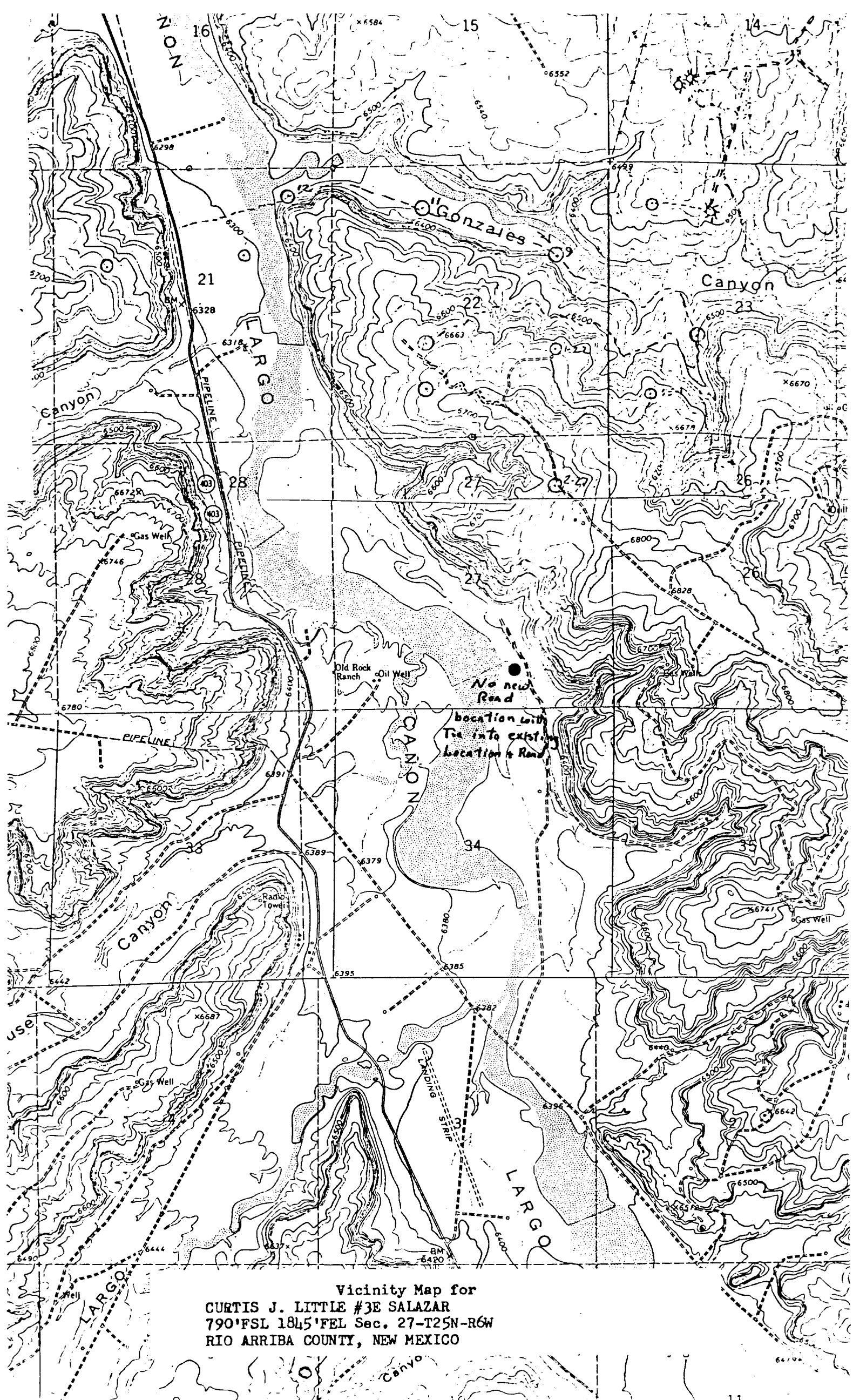
If answer is "no," list the owners and tract descriptions which have actually been consolidated. (Use reverse side of this form if necessary.) \_\_\_\_\_

No allowable will be assigned to the well until all interests have been consolidated (by communitization, unitization, forced-pooling, or otherwise) or until a non-standard unit, eliminating such interests, has been approved by the Commission.

		<p align="center"><b>RECEIVED</b> JUN 24 1985 BUREAU OF LAND MANAGEMENT FARMINGTON RESOURCE AREA</p>	
		<p align="center">Sec.</p>	
<p align="center"><b>RECEIVED</b> JUL 26 1985 OIL CON. DIV. DIST. 3</p>		<p align="center">27</p>	

Scale: 1"=1000'

<p align="center"><b>CERTIFICATION</b></p> <p>I hereby certify that the information contained herein is true and complete to the best of my knowledge and belief.</p> <p align="right"><i>Curtis J. Little</i></p>	
Name	Curtis J. Little
Position	Operator
Company	Curtis J. Little
Date	June 24, 1985
<p>I hereby certify that the well location shown on this plat was plotted from field notes of actual surveys made by me or under my supervision, and that the same is true and correct to the best of my knowledge and belief.</p>	
Date Surveyed	April 12, 1985
Registered Professional Engineer and Land Surveyor	<i>Fred B. Kerr Jr.</i> Fred B. Kerr Jr.
Certificate No.	3950



Vicinity Map for  
 CURTIS J. LITTLE #3E SALAZAR  
 790'FSL 1845'FEL Sec. 27-T25N-R6W  
 RIO ARRIBA COUNTY, NEW MEXICO