

30-039-24203

Form 3160-3
(November 1983)
(formerly 9-331C)

SUBMIT IN TRIPPLICATE*
(Other instructions on
reverse side)

Form approved.
Budget Bureau No. 1004-0136
Expires August 31, 1985

UNITED STATES
DEPARTMENT OF THE INTERIOR
BUREAU OF LAND MANAGEMENT

APPLICATION FOR PERMIT TO DRILL, DEEPEN, OR PLUG BACK

1a. TYPE OF WORK
DRILL ☒ DEEPEN ☐ PLUG BACK ☐

b. TYPE OF WELL
OIL WELL ☐ GAS WELL ☒ OTHER ☐ SINGLE ZONE ☐ MULTIPLE ZONE ☒

2. NAME OF OPERATOR
Union Texas Petroleum

3. ADDRESS OF OPERATOR
375 US Highway 64 Farmington, NM 87401

4. LOCATION OF WELL (Report location clearly and in accordance with any State requirements.)
At surface 830' FNL & 1620' FWL

At proposed prod. zone
same as above

14. DISTANCE IN MILES AND DIRECTION FROM NEAREST TOWN OR POST OFFICE*
22 miles NW of Ojito, New Mexico

10. DISTANCE FROM PROPOSED* LOCATION TO NEAREST PROPERTY OR LEASE LINE, FT.
(Also to nearest drig. unit line, if any)
3659' from lease
830' from DU

16. NO. OF ACRES IN LEASE
2560'

17. NO. OF ACRES ASSIGNED TO THIS WELL
NW/4 159.92 acres
N/2 319.84 acres

13. DISTANCE FROM PROPOSED LOCATION* TO NEAREST WELL, DRILLING, COMPLETED, OR APPLIED FOR, ON THIS LEASE, FT.
3503'

19. PROPOSED DEPTH
7675'

20. ROTARY OR CABLE TOOLS
Rotary

21. ELEVATIONS (Show whether DF, RT, GR, etc.)
6682' G.L. (graded)

DRILLING OPERATIONS AUTHORIZED

22. APPROX. DATE WORK WILL START*
April 25, 1988

23. PROPOSED Casing and Cementing Program
This action is subject to technical review pursuant to 43 CFR 3165.4 and appeal pursuant to 43 CFR 3165.4.

SIZE OF HOLE	SIZE OF CASING	WEIGHT PER FOOT	SETTING DEPTH	QUANTITY OF CEMENT
12-1/4	9-5/8	32.3	350'	205 sx (242 cu.ft.)
8-3/4	7	23.0	3560'	340 sx (799 cu.ft.)
6-1/4	4-1/2 liner	10.5	3360'-7675'	510 sx (800 cu.ft.)

Union Texas Petroleum wishes to advise we intend to drill a 12-1/4" hole with mud to 350' and set 9-5/8" 32.3#, H-40, ST&C csg to 350', cementing to surface with 205 sx (242 cu.ft.) C1 "B" with 2% CaCl2 and 1/4# flocele/sk. Wait on cement 12 hrs.

Nipple up, test BOP. Drill 8-3/4" hole with mud out of surface to 3560'. Set 7", 23.0#, K-55, ST&C intermediate csg to 3560', cementing to surface with 235 sx (675 cu.ft.) 65/35 POZ with 12% gel and 12-1/4# gilsonite/sk, tailed by 105 sx (124 cu.ft.) C1 "B" w/2% CaCl2.

Drill 6-1/4" hole with natural gas out of intermediate to a TD of 7675'. Log well, run 4-1/2", 10.5#, K-55, ST&C liner from 3360' to 7675'. Cement liner into intermediate csg with 570 sx (800 cu.ft.) 50/50 POZ with 4% gel, 6-1/4# gilsonite/sk, and 10# salt/sk.

Following perforation and treatment of the Mesaverde, Gallup and Dakota formations, standard production equipment will be installed. The well will be tied into Gas Company of New Mexico. A cathodic protection groundbed will be drilled on location. This well will be equipped with a thermo-electric generator.

IN ABOVE SPACE DESCRIBE PROPOSED PROGRAM: If proposal is to deepen or plug back, give data on present productive zone and proposed new productive zone. If proposal is to drill or deepen directionally, give pertinent data on subsurface locations and measured and true vertical depths. Give blowout preventer program, if any.

24. SIGNED Robert E. Frank TITLE Permit Coordinator DATE 2/23/88

(This space for Federal or State office use)

PERMIT NO. _____ APPROVAL DATE _____

APPROVED BY _____ TITLE NMOC DATE _____

CONDITIONS OF APPROVAL, IF ANY:

[Handwritten initials]

[Handwritten signature]
~~WILLIAM RIA-DULCE~~

[Handwritten signature]

*See Instructions On Reverse Side

Form C-102
Revised 10-1-79

All distances must be from the outer boundaries of the Section.

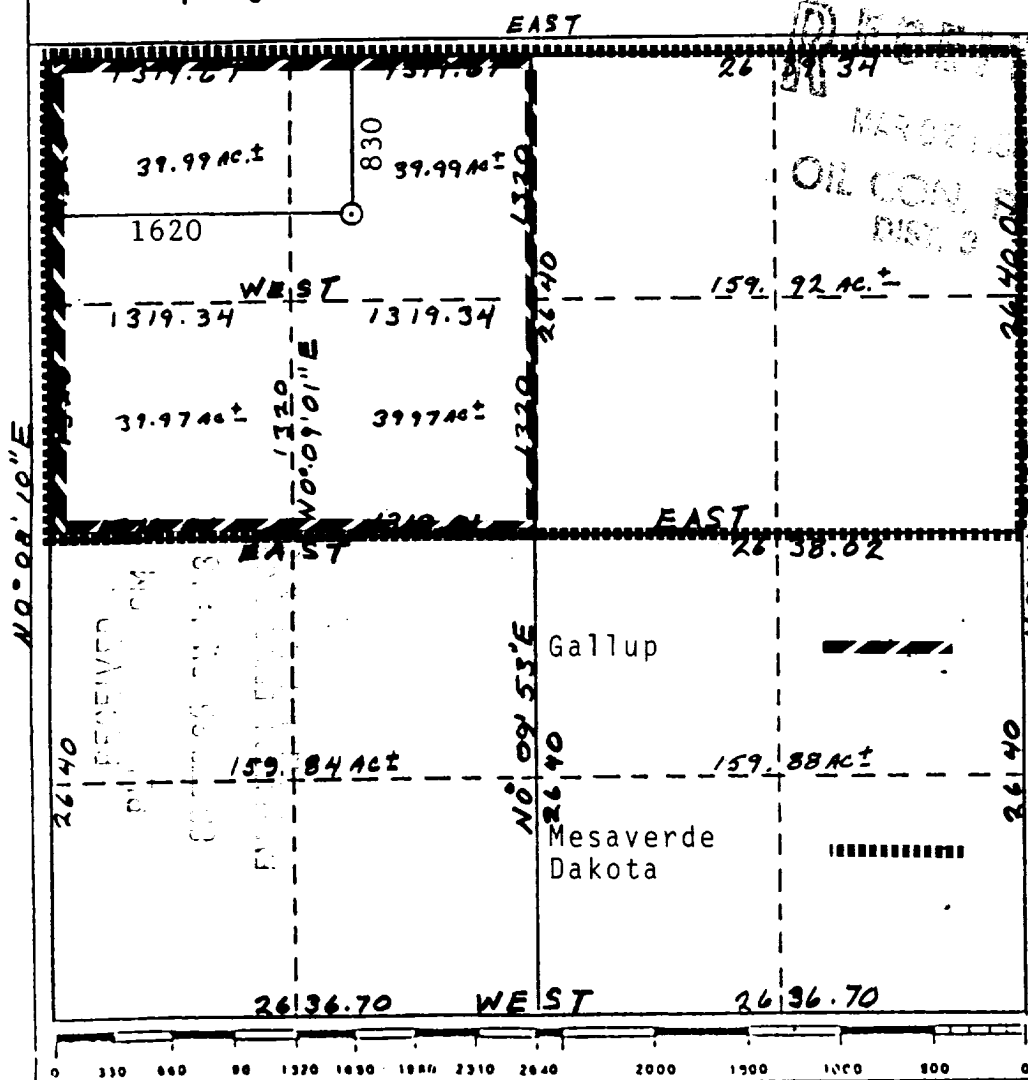
Operator UNION TEXAS PETROLEUM		Lease JICARILLA "H"		Well No. 13
Unit Letter C	Section 20	Township 26N	Range 4W	County Rio Arriba
Actual Footage Location of Well: 830 feet from the North line and 1620 feet from the West line				
Ground Level Elev. 6682	Producing Formation Dakota Mesaverde/Gallup/	Pool Blanco/Wild Horse/Basin	Dedicated Acreage 346.84 NW/4 159.97 N/2 319.84 Acres	

1. Outline the acreage dedicated to the subject well by colored pencil or hatchure marks on the plat below.
2. If more than one lease is dedicated to the well, outline each and identify the ownership thereof (both as to working interest and royalty).
3. If more than one lease of different ownership is dedicated to the well, have the interests of all owners been consolidated by communitization, unitization, force-pooling, etc?

☐ Yes ☐ No If answer is "yes," type of consolidation _____

If answer is "no," list the owners and tract descriptions which have actually been consolidated. (Use reverse side of this form if necessary.) _____

No allowable will be assigned to the well until all interests have been consolidated (by communitization, unitization, forced-pooling, or otherwise) or until a non-standard unit, eliminating such interests, has been approved by the Division.



CERTIFICATION

I hereby certify that the information contained herein is true and complete to the best of my knowledge and belief.

Robert C. Frank

Name
Robert C. Frank

Position
Permit Coordinator

Company
Union Texas Petroleum

Date
February 22, 1988

I hereby certify that the well location shown on this plat was plotted from field notes of actual surveys made by me or under my supervision, and that the same is true and correct to the best of my knowledge and belief.

Cecil B. Talley, Jr.
 Date Surveyed _____
 Registered Land Surveyor
 State of Texas
 9672
 Certificate No. _____

Exhibit I

