

UNITED STATES  
DEPARTMENT OF THE INTERIOR  
BUREAU OF LAND MANAGEMENT

FORM APPROVED  
Budget Bureau No. 1004-0135  
Expires: March 31, 1993

SUNDRY NOTICES AND REPORTS ON WELLS

Do not use this form for proposals to drill or to deepen or reentry to a different reservoir.

Use "APPLICATION FOR PERMIT - " for such proposals.

SUBMIT IN TRIPLICATE

1. Type of Well  
☐ Oil Well ☒ Gas Well ☐ Other

2. Name of Operator  
ENERGEN RESOURCES CORPORATION

3. Address and Telephone No.  
2198 Bloomfield Highway, Farmington, NM 87401

4. Location of Well (Footage, Sec., T., R., M., or Survey Description)  
1650' FSL, 990' FWL, Sec. 8, T26N, R2W, N.M.P.M.

RECEIVED  
SEP 20 1993  
OIL CORP. DIV.  
DIST. 8

5. Lease Designation and Serial No.  
NM 046

6. If Indian, Allottee or Tribe Name  
Blanco MV

7. If Unit or CA, Agreement Designation

8. Well Name and No.  
Cheney Federal B 2

9. API Well No.  
30-039-25266

10. Field and Pool, or exploratory Area  
Blanco MV

11. County or Parish, State  
Rio Arriba NM

12. CHECK APPROPRIATE BOX(s) TO INDICATE NATURE OF NOTICE, REPORT, OR OTHER DATA

TYPE OF SUBMISSION

- ☒ Notice of Intent
- ☐ Subsequent Report
- ☐ Final Abandonment Notice

TYPE OF ACTION

- ☐ Abandonment
- ☐ Recompletion
- ☐ Plugging Back
- ☐ Casing Repair
- ☐ Altering Casing
- ☒ Other Plug Back to Lewis
- ☐ Change of Plans
- ☐ New Construction
- ☐ Non-Routine Fracturing
- ☐ Water Shut-Off
- ☐ Conversion to Injection
- ☐ Dispose Water

(Note: Report results of multiple completion on Well Completion or Recompletion Report and Log form.)

13. Describe Proposed or Completed Operations (Clearly state all pertinent details, and give pertinent dates, including estimated date of starting any proposed work. If well is directionally drilled, give subsurface locations and measured and true vertical depths for all markers and zones pertinent to this work.)

It is intended to plug back this wellbore to the Lewis Formation as follows:

1. MIRU. TOH with tubing.
2. TIH with cement retainer set at 5400'. Squeeze cement with 350 sks 65/35 poz cement followed by 150 sks Class B to abandon Mesaverde, Gallup and Mancos. Cap retainer with 5 sks cement.
3. Selective perforate and fracture the Lewis from 4280' - 4400'. Top of Huerfanito Bentonite at 4200'.
4. TIH and clean out, land tubing and return to production.

14. I hereby certify that the foregoing is true and correct

Signed Monica Taylor

Title Production Assistant

Date 7/12/99

(This space for Federal or State office use)

Approved by Patricia M. Nash

Title Lands and Mineral Resources

Date 9-14-99

Conditions of approval, if any:

Title 18 U.S.C. Section 1001, makes it a crime for any person knowingly and willfully to make to any department or agency of the United States any false, fictitious or fraudulent statements or representations as to any matter within its jurisdiction.

District I  
PO Box 11732, Hobbs, NM 88241-1980  
District II  
PO Drawer DD, Artesia, NM 88211-0719  
District III  
1000 Rio Brazos Rd., Aztec, NM 87410  
District IV  
PO Box 2088, Santa Fe, NM 87504-2088

Energy, Minerals & Natural Resources Department  
**OIL CONSERVATION DIVISION**  
PO Box 2088  
Santa Fe, NM 87504-2088

Revised February 21, 1994  
Instructions on back  
Submit to Appropriate District Office  
State Lease - 4 Copies  
Fee Lease - 3 Copies  
☐ AMENDED REPORT

**WELL LOCATION AND ACREAGE DEDICATION PLAT**

|                              |  |                      |                                  |
|------------------------------|--|----------------------|----------------------------------|
| * APT Number<br>30-039-25266 |  | * Pool Code<br>72319 | * Pool Name<br>Blanco Mesa Verde |
| * Property Code<br>22033     | * Property Name<br>Cheney Federal B        |                      | * Well Number<br>2               |
| * OGRID No.<br>162928        | * Operator Name<br>Energen Resources Corp. |                      | * Elevation<br>7217'             |

**10 Surface Location**

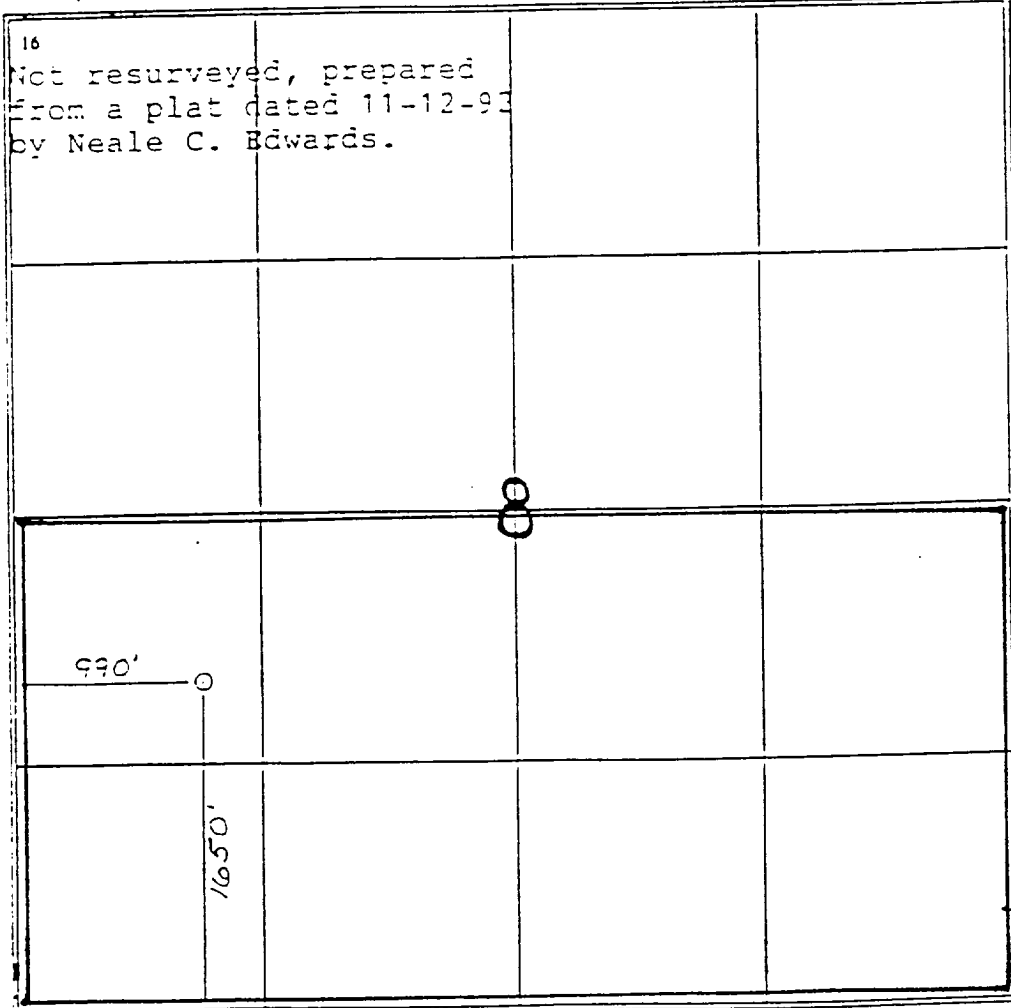
| UL or lot no. | Section | Township | Range | Lot Ida | Feet from the | North/South line | Feet from the | East/West line | County |
|---------------|---------|----------|-------|---------|---------------|------------------|---------------|----------------|--------|
| L.            | 8       | 26 N     | 2 W   |         | 1650          | South            | 990           | West           | R.A.   |

**11 Bottom Hole Location If Different From Surface**

| UL or lot no. | Section | Township | Range | Lot Ida | Feet from the | North/South line | Feet from the | East/West line | County |
|---------------|---------|----------|-------|---------|---------------|------------------|---------------|----------------|--------|
|               |         |          |       |         |               |                  |               |                |        |

|                          |                   |                      |             |
|--------------------------|-------------------|----------------------|-------------|
| * Dedicated Acres<br>320 | * Joint or Infill | * Consolidation Code | * Order No. |
|--------------------------|-------------------|----------------------|-------------|

NO ALLOWABLE WILL BE ASSIGNED TO THIS COMPLETION UNTIL ALL INTERESTS HAVE BEEN CONSOLIDATED OR A NON-STANDARD UNIT HAS BEEN APPROVED BY THE DIVISION



**17 OPERATOR CERTIFICATION**

I hereby certify that the information contained herein is true and complete to the best of my knowledge and belief.

Signature \_\_\_\_\_  
Gary W. Brink  
Printed Name  
Production Superintendent  
Title  
7/12/99  
Date

**18 SURVEYOR CERTIFICATION**

I hereby certify that the well location shown on this plat was plotted from field notes of actual surveys made by me or under my supervision, and that the same is true and correct to the best of my belief.

11-6-95

Date of Survey \_\_\_\_\_  
Signature and Title of Professional Surveyor \_\_\_\_\_  
Certificate Number \_\_\_\_\_