

District I
 PO Box 1980, Hobbs, NM 88241-1980
 District II
 PO Drawer DD, Artesia, NM 88211-0719
 District III
 1000 Rio Brazos Rd., Aztec, NM 87410
 District IV
 PO Box 2088, Santa Fe, NM 87504-2088

State of New Mexico
 Energy, Minerals & Natural Resources Department

Form C-101
 Revised February 10, 1994
 Instructions on back
 Submit to Appropriate District Office
 State Lease - 6 Copies
 Fee Lease - 5 Copies

OIL CONSERVATION DIVISION
 PO Box 2088
 Santa Fe, NM 87504-2088

AMENDED REPORT

APPLICATION FOR PERMIT TO DRILL, RE-ENTER, DEEPEN OR ADD A ZONE

RECEIVED
MAY 26 1994

| | | |
|----------------------------------------------------------------------------------------------------------------------------|------------------------------|----------------------------|
| Operator Name and Address: UNION OIL COMPANY OF CALIFORNIA P.O. Box 2620 Casper, Wyoming 82602 307/234-1563 ext 1 | | OGRID Number 2370P |
| Property Code 11510 | Property Name Rincon Unit | API Number 30-039-25413 |
| DIST. 3 | | Well No. 164-E |

7 Surface Location

| UL or lot no. | Section | Township | Range | Lot Idn | Feet from the | North/South line | Feet from the | East/West line | County |
|---------------|---------|----------|-------|---------|---------------|------------------|---------------|----------------|------------|
| D | 2 | 26N | 7W | | 860' | North | 1150' | West | Rio Arriba |

8 Proposed Bottom Hole Location If Different From Surface

| UL or lot no. | Section | Township | Range | Lot Idn | Feet from the | North/South line | Feet from the | East/West line | County |
|---------------------------------|---------|----------|-------|---------|-----------------|------------------|---------------|----------------|--------|
| Proposed Pool 1 Basin Dakota | | | | | Proposed Pool 2 | | | | |
| w/320-68 71599 | | | | | | | | | |

| | | | | |
|---------------------|-------------------------|------------------------|--------------------------|---------------------------------|
| Work Type Code N | Well Type Code G | Cable/Rotary Rotary | Lease Type Code State | Ground Level Elevation 6526' |
| Multiple No | Proposed Depth 7480' | Formation Dakota | Contractor | Spud Date Approx. 7/15/94 |

21 Proposed Casing and Cement Program

| Hole Size | Casing Size | Casing weight/foot | Setting Depth | Sacks of Cement | Estimated TOC |
|-----------|-------------|--------------------|-----------------------------|-------------------|---------------|
| 12-1/4" | 8-5/8" K-55 | 24# | ± 350' | ± 250 SX "B" | Surface |
| 7-7/8" | 5-1/2" K-55 | 17# & 15.5# | ±7480' | 2 stage w/DV | Surface |
| | | | tool @ ±5000' | 1st-lead, ±450 | sx "Lite". |
| | | | tail 125 sx Class "B", | 2nd lead, ±750 sx | |
| | | | Lite, tail 125 sx Class "B" | | |

22 Describe the proposed program. If this application is to DEEPEN or PLUG BACK give the data on the present productive zone and proposed new productive zone. Describe the blowout prevention program, if any. Use additional sheets if necessary.

Drill 12-1/4" hole to 350' w/spud mud. Run & cmt to surface 8-5/8" csg. N.U. & test BOPE. Drill 7-7/8" hole to ±7480' - TD w/ fresh water/gel mud system. Log & if productive, run & cmt 5-1/2" csg in 2 stages w/"DV" tool @ ±5000'. Selectively perforate the Dakota formation. Fracture stimulate as required. Test & complete w/packer and 2-3/8" tbg.

NOTE:

Bond coverage pursuant to 43 CFR 3104 for lease activities is being provided by Union Oil Company of California (BLM Bond #CA0048).

23 I hereby certify that the information given above is true and complete to the best of my knowledge and belief.

Signature: *Jim Benson*
 Printed name: Jim Benson
 Title: Drilling Superintendent
 Date: 5/24/94
 Phone: 303/234-1563 X116

OIL CONSERVATION DIVISION

Approved by: *Eric B...*
 Title: DEPUTY OIL & GAS INSPECTOR, DIST. #3
 Approval: MAY 26 1994
 Expiration: MAY 26 1995
 Conditions of Approval:
 Attached

Submit to Appropriate District Office
 State Lease - 4 copies
 Fee Lease - 3 copies

State of New Mexico
 Energy, Minerals and Natural Resources Department

RECEIVED
 MAY 26 1994
 DISTRICT 3

OIL CONSERVATION DIVISION
 P.O. Box 2088
 Santa Fe, New Mexico 87504-2088

DISTRICT I
 P.O. Box 1980, Hobbs, NM 88240

DISTRICT II
 P.O. Drawer DD, Artesia, NM 88210

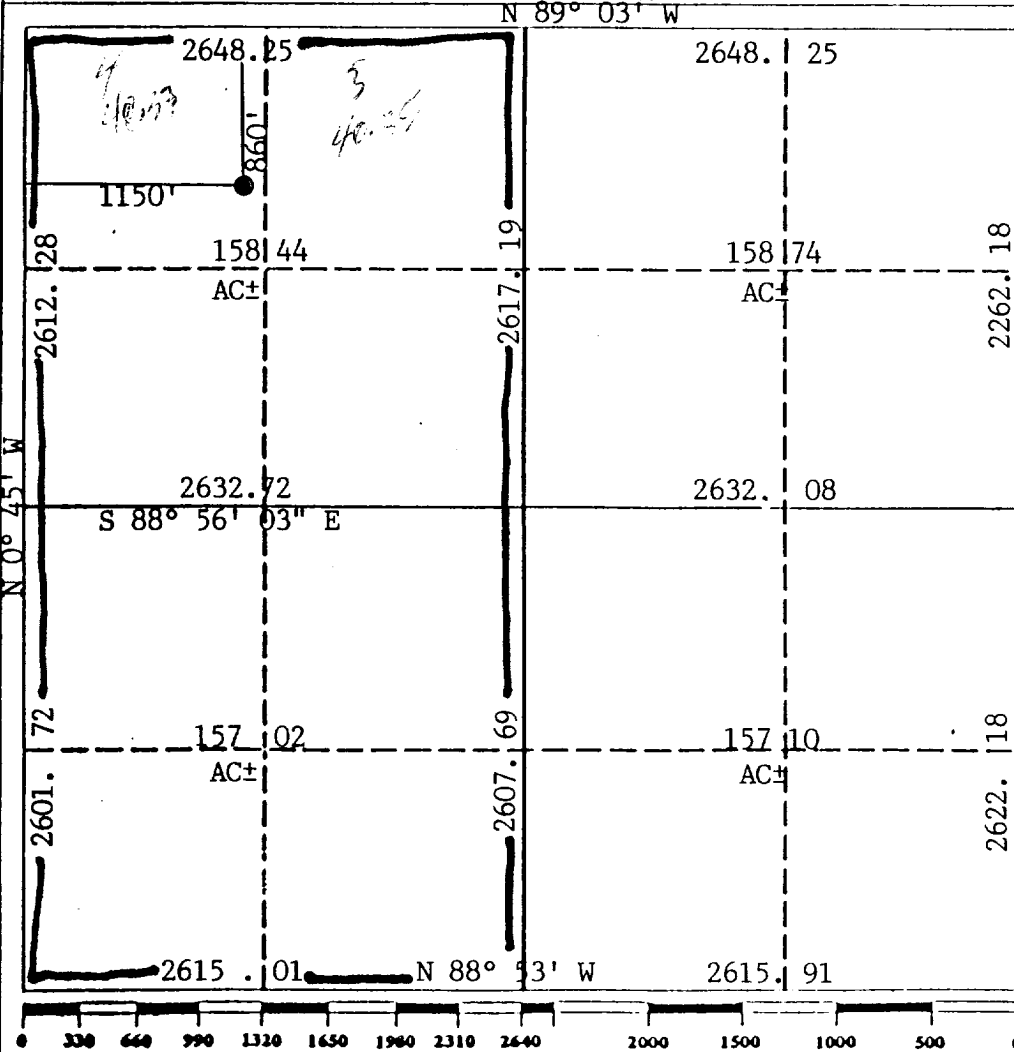
DISTRICT III
 1000 Rio Brazos Rd., Aztec, NM 87410

WELL LOCATION AND ACREAGE DEDICATION PLAT

All Distances must be from the outer boundaries of the section

| | | | | | |
|---------------------------------------------------------------------------------------------------------------------------------------------------------------------------------------------------------------------|--|------------------------|--|----------------------------------------|--|
| Operator UNOCAL | | Lease RINCON | | Well No. 164-E | |
| Unit Letter D | | Section 2 | | Township 26N | |
| Range 7W | | County NMPM | | Dedicated Acreage: 320 Acres | |
| Actual Footage Location of Well: 860 feet from the NORTH line and 1150 feet from the WEST line Ground level Elev. 6526 Producing Formation Dakota Pool Basin | | | | | |

- Outline the acreage dedicated to the subject well by colored pencil or hatchure marks on the plat below.
- If more than one lease is dedicated to the well, outline each and identify the ownership thereof (both as to working interest and royalty).
- If more than one lease of different ownership is dedicated to the well, have the interest of all owners been consolidated by communitization, unitization, force-pooling, etc.?
 Yes No If answer is "yes" type of consolidation Unitization
 If answer is "no" list the owners and tract descriptions which have actually been consolidated. (Use reverse side of this form if necessary.)
 No allowable will be assigned to the well until all interests have been consolidated (by communitization, unitization, forced pooling, or otherwise) or until a non-standard unit, eliminating such interest, has been approved by the Division.

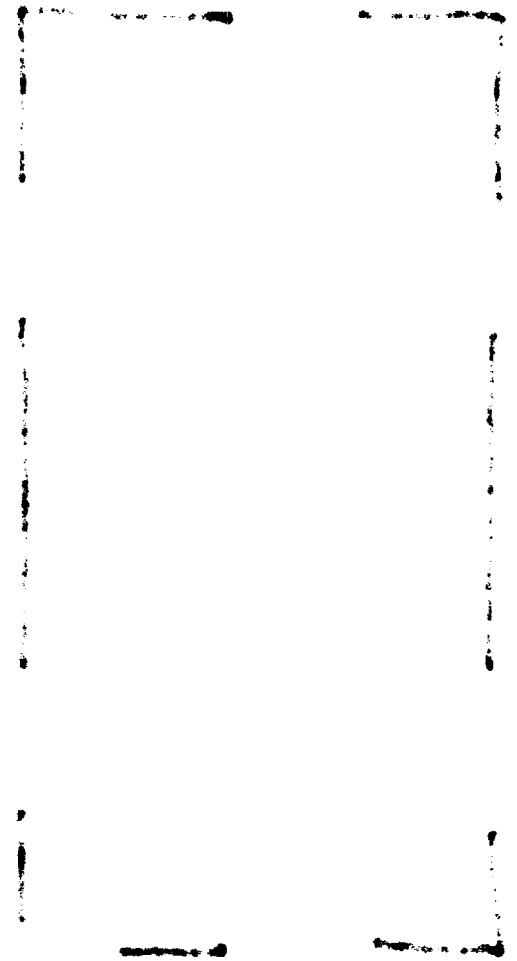


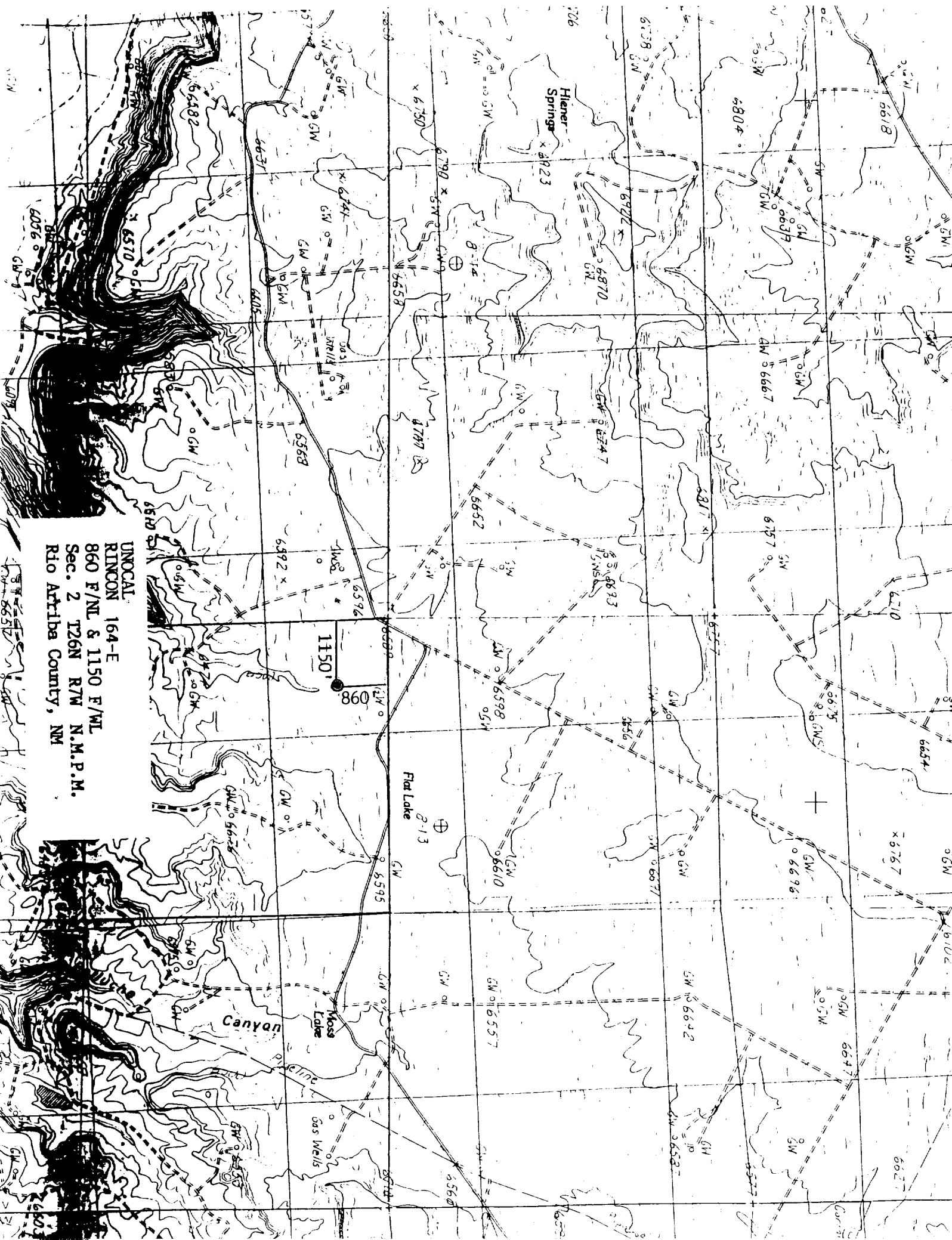
OPERATOR CERTIFICATION
 I hereby certify that the information contained herein is true and complete to the best of my knowledge and belief.

Signature: *Jim Benson*
 Printed Name: **Jim Benson**
 Position: **Drilling Superintendent**
 Company: **Union Oil of California**
 Date: **5/ /94**

SURVEYOR CERTIFICATION
 I hereby certify that the well location shown on this plat was plotted from field notes of actual surveys made by me or under my supervision, and that the same is true and correct to the best of my knowledge and belief.

Date Surveyed: **September 21, 1993**
 Signature & Seal of Professional Surveyor: *Geoil B. Tullis*
 Certificate No. **6672**
 Seal: **NEW MEXICO PROFESSIONAL LAND SURVEYOR**





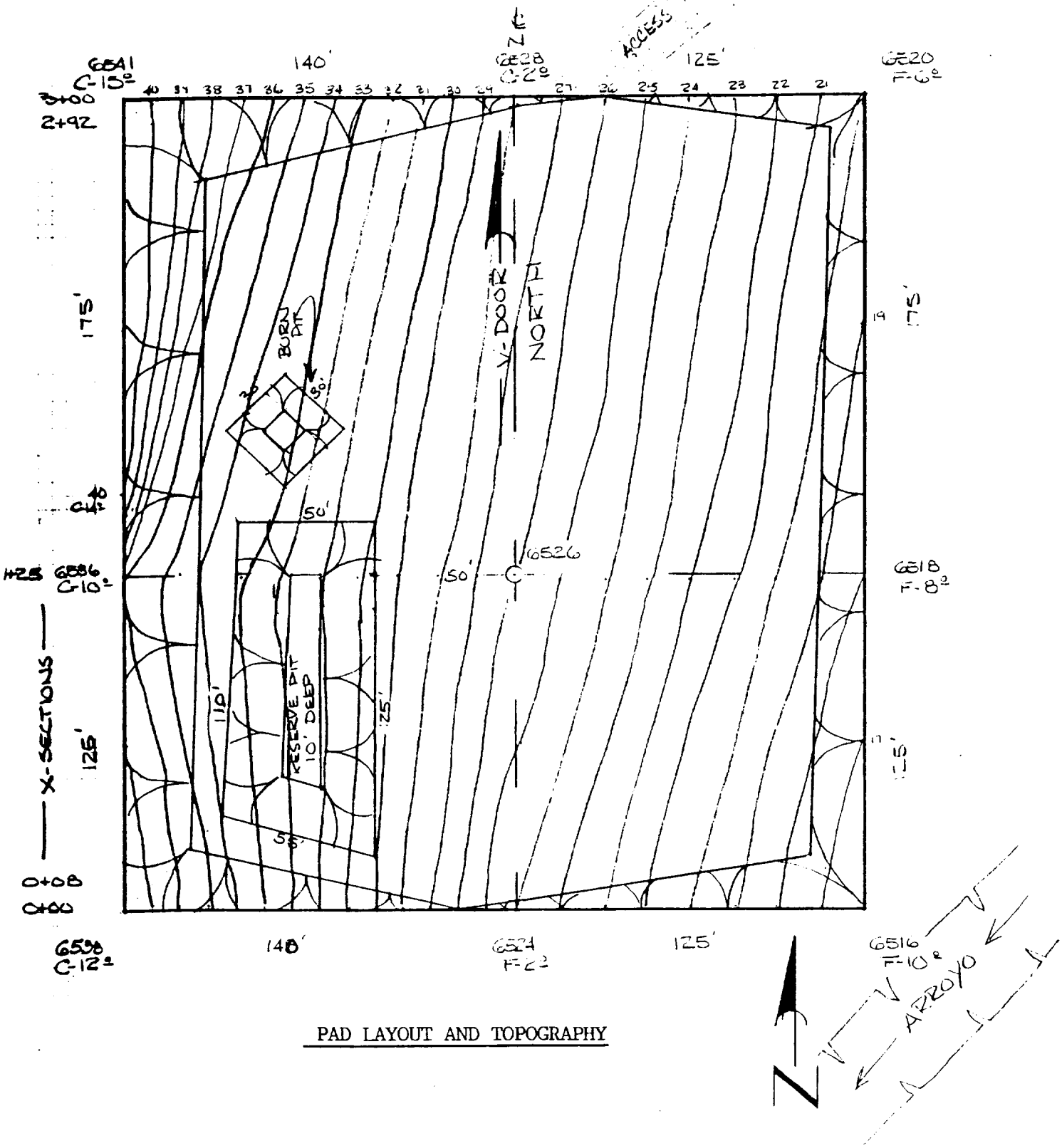
UNOCAL
 RINCON 164-E
 860 F/NL & 1150 F/WL
 Sec. 2 T26N R7W N.M.P.M.
 Rio Arriba County, NM

UNOCAL

Scale 1" = 50'

Contour Int. = 1'

RINCON 164-E
860 F/NL & 1150 F/WL
Sec. 2 T26N R7W N.M.P.M.
Rio Arriba County, NM



UNOCAL

Scale: Horz. 1" = 50'
Vert. 1" = 10'

RINCON 164-E

0+00

ZERO CUT/FILL

38
-140

0+08

26
-116

26
0

26
105

24
0
±

36
-140

1+25

26
-120

RESERVE PIT
10' DEEP

26
0

26
109

±

16
125

18
125

X-SECTIONS AND VOLUMES

41
-140

2+92

26
-110

28
0

26
113

26
0
±

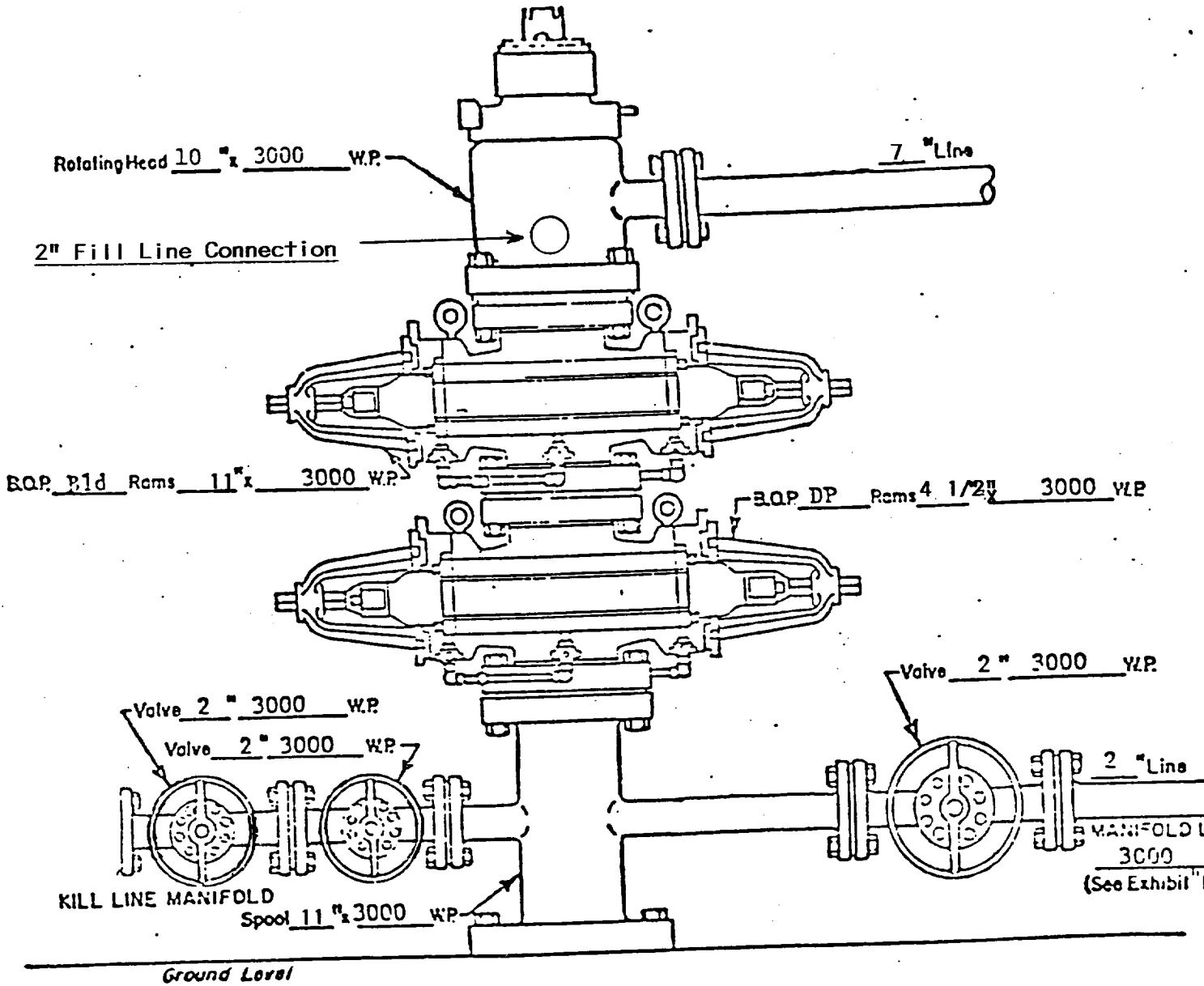
3+00

ZERO CUT/FILL

20
125

CUT.....7718 CU YDS.
FILL.....4639 CU YDS.
PIT EXCAVATION.....1248 CU YDS.

UNION OIL COMPANY OF CALIFORNIA
 RINCON UNIT WELLS
 RINCON FIELD
 RIO ARRIBA COUNTY, NEW MEXICO

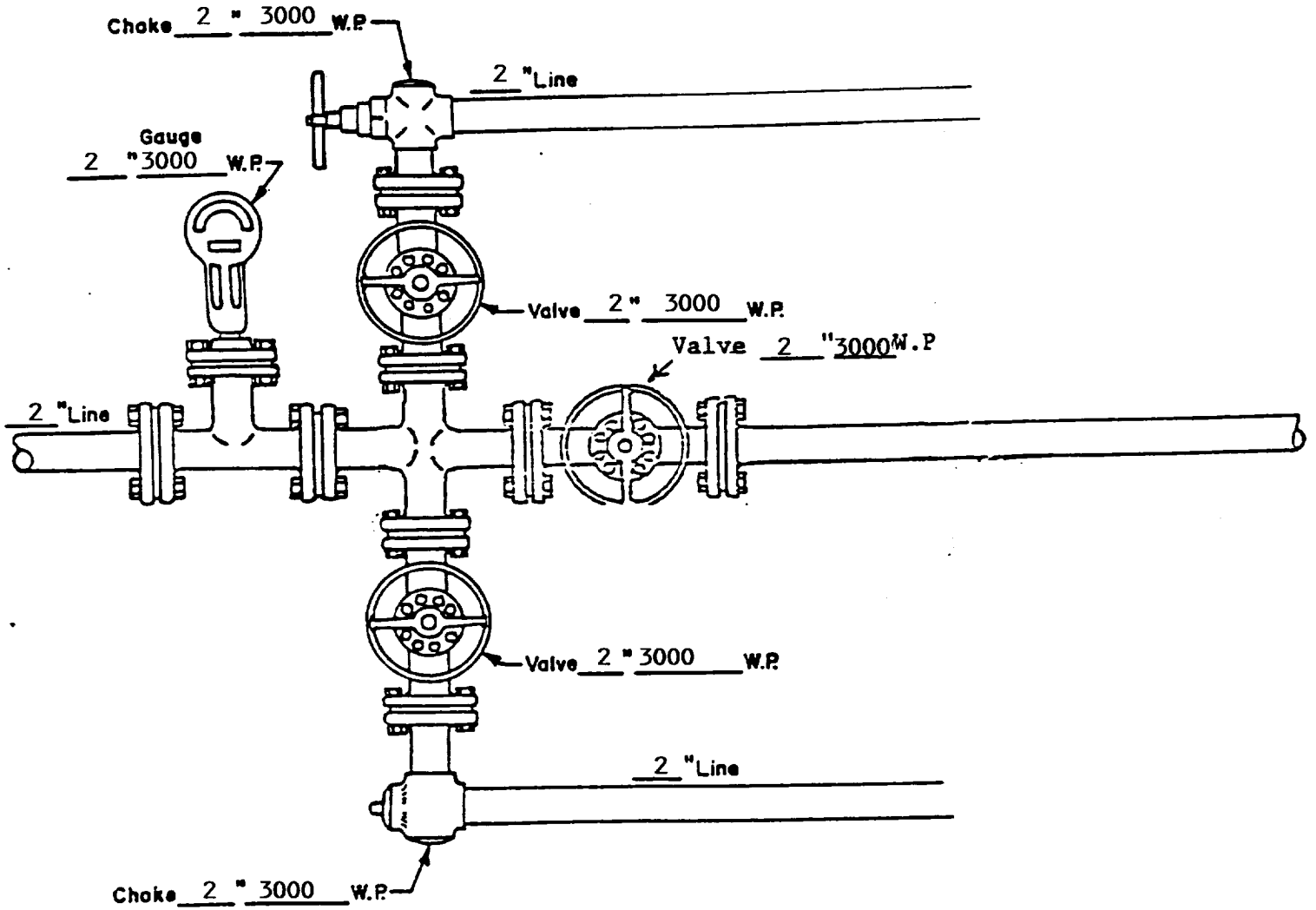


WELL HEAD B.O.P.
3000 #W.P.

Manual
 Hydraulic

NOTE: Although 3000 psi BOP equipment will be used, equipment determination and line sizing are based on the requirements for 2000 psi BOP equipment due to the known drilling and reservoir conditions.

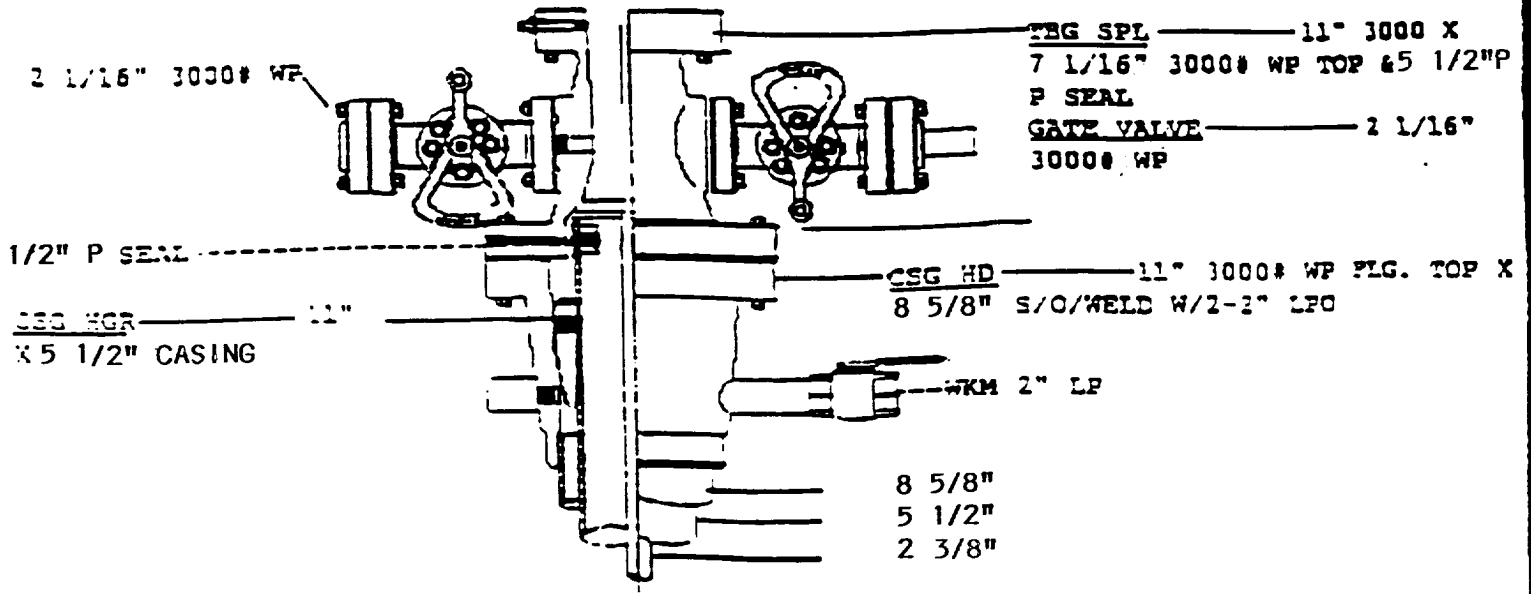
UNION OIL COMPANY OF CALIFORNIA
 RINCON UNIT WELLS
 RINCON FIELD
 RIO ARRIBA COUNTY, NEW MEXICO

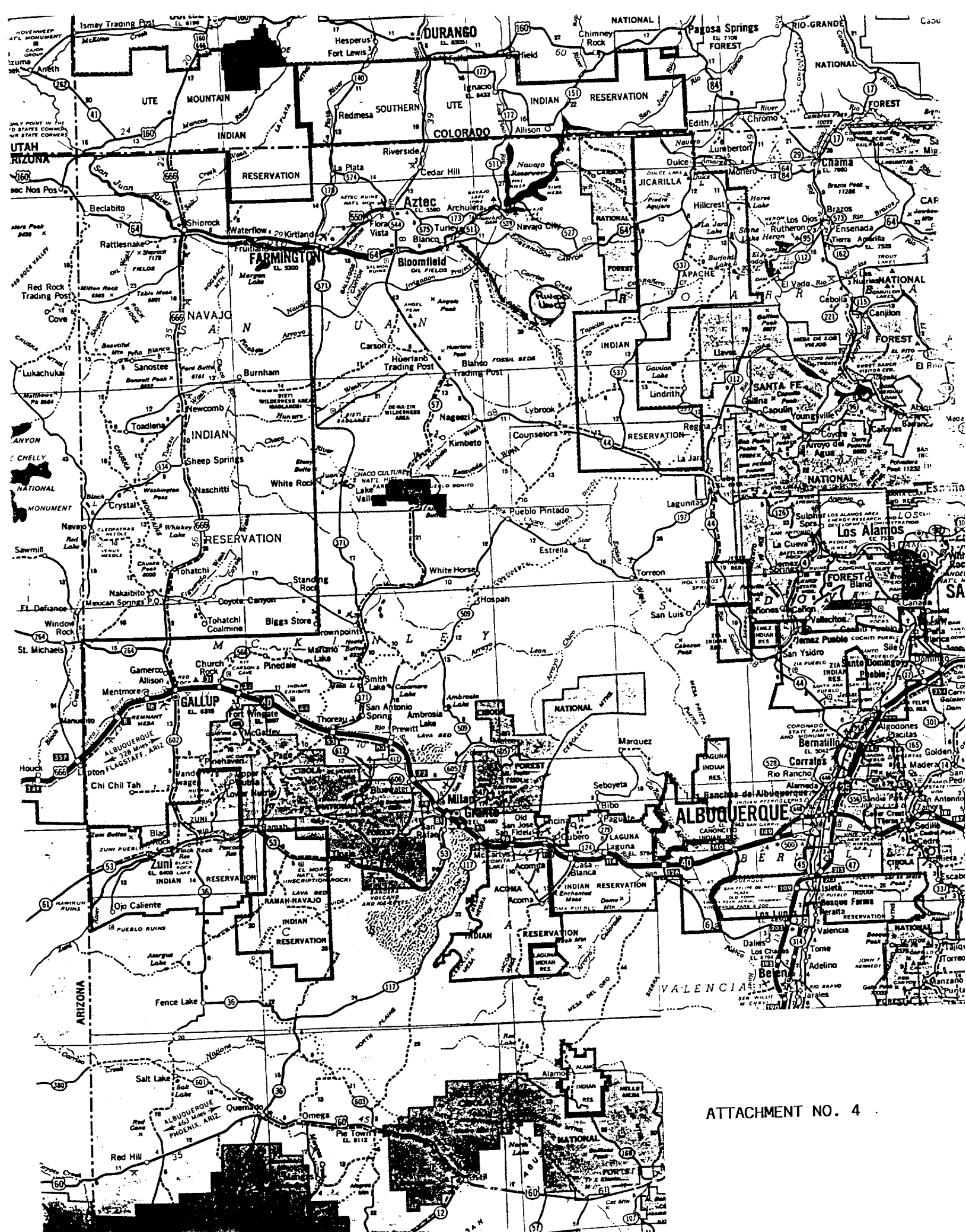


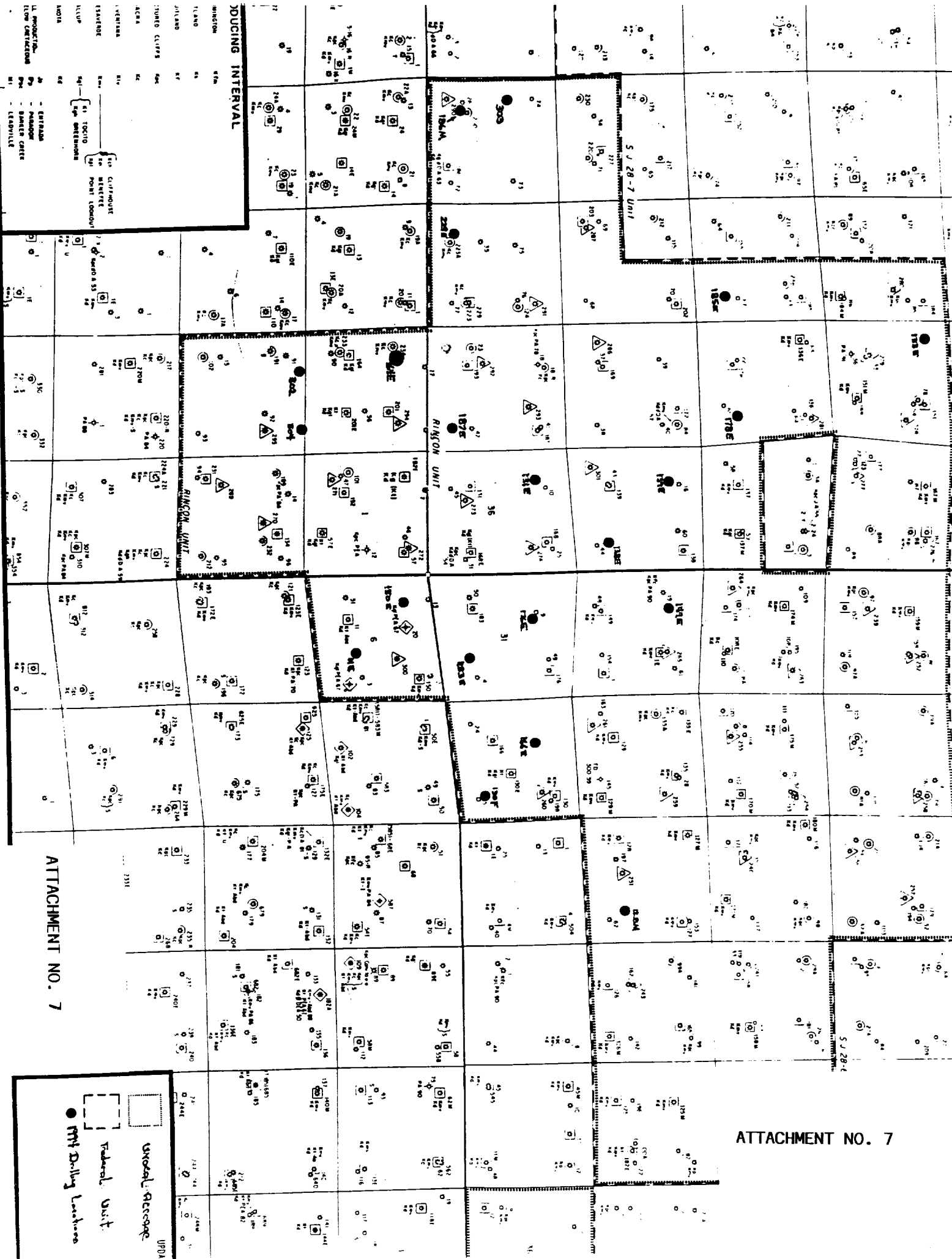
MANIFOLD
 3000 #W.P.

Manuel
 Hydraulic

UNION OIL COMPANY OF CALIFORNIA
 RINCON UNIT WELLS
 (DAKOTA/MESA VERDE)-(DAKOTA/GALLUP)
 RINCON UNIT
 RIO ARRIBA COUNTY, NEW MEXICO
 (8 5/8", 5 1/2", 2 3/8")







ATTACHMENT NO. 7

ATTACHMENT NO. 7

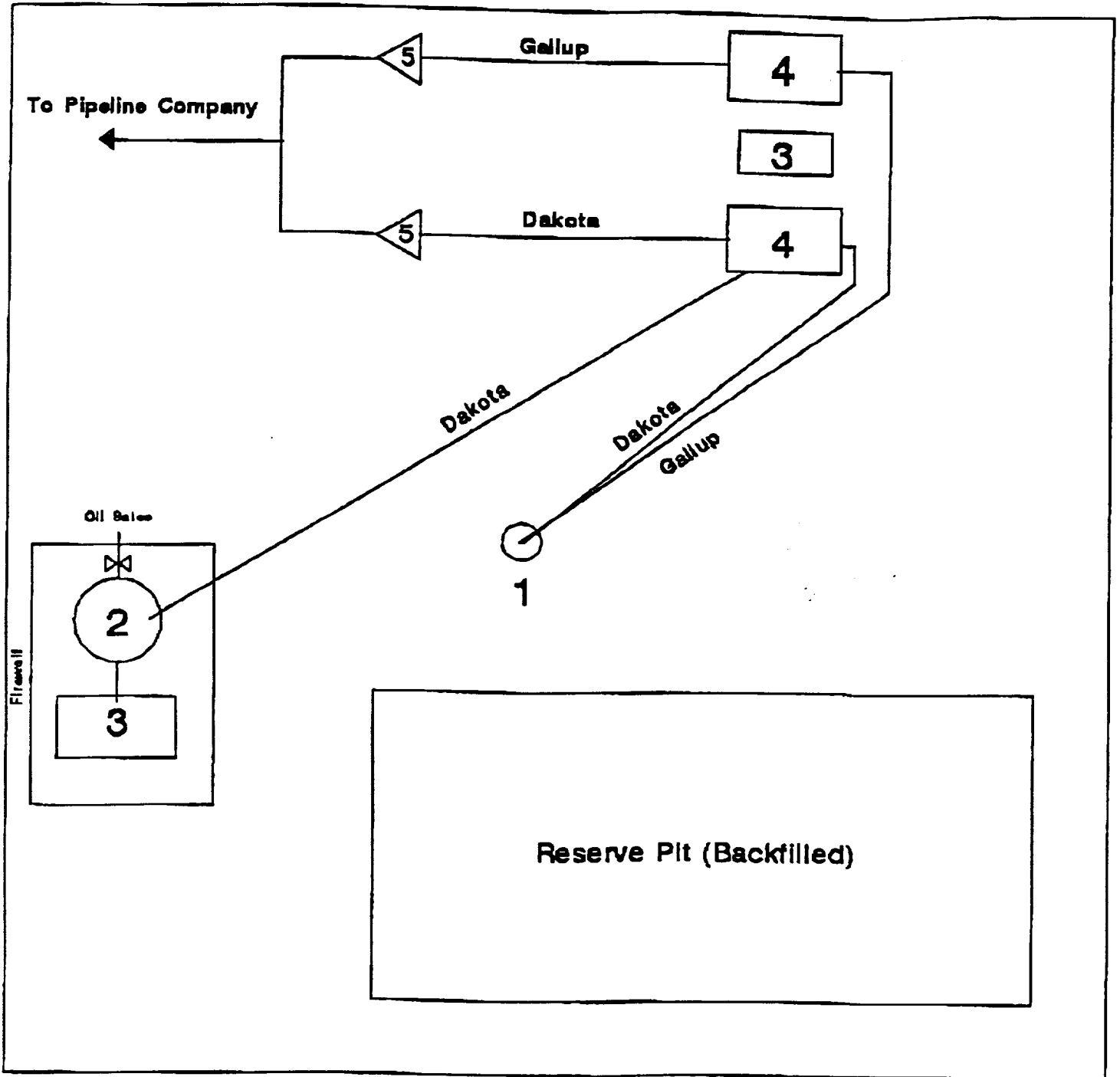
UNCALLED MESSAGE
 Federal Unit
 ● FBI Daily Lookouts

UNDOX

INDUCING INTERVAL

1. PRODUCTION
 2. PRODUCTION
 3. PRODUCTION
 4. PRODUCTION
 5. PRODUCTION
 6. PRODUCTION
 7. PRODUCTION
 8. PRODUCTION
 9. PRODUCTION
 10. PRODUCTION
 11. PRODUCTION
 12. PRODUCTION
 13. PRODUCTION
 14. PRODUCTION
 15. PRODUCTION
 16. PRODUCTION
 17. PRODUCTION
 18. PRODUCTION
 19. PRODUCTION
 20. PRODUCTION
 21. PRODUCTION
 22. PRODUCTION
 23. PRODUCTION
 24. PRODUCTION
 25. PRODUCTION
 26. PRODUCTION
 27. PRODUCTION
 28. PRODUCTION
 29. PRODUCTION
 30. PRODUCTION
 31. PRODUCTION
 32. PRODUCTION
 33. PRODUCTION
 34. PRODUCTION
 35. PRODUCTION
 36. PRODUCTION
 37. PRODUCTION
 38. PRODUCTION
 39. PRODUCTION
 40. PRODUCTION
 41. PRODUCTION
 42. PRODUCTION
 43. PRODUCTION
 44. PRODUCTION
 45. PRODUCTION
 46. PRODUCTION
 47. PRODUCTION
 48. PRODUCTION
 49. PRODUCTION
 50. PRODUCTION
 51. PRODUCTION
 52. PRODUCTION
 53. PRODUCTION
 54. PRODUCTION
 55. PRODUCTION
 56. PRODUCTION
 57. PRODUCTION
 58. PRODUCTION
 59. PRODUCTION
 60. PRODUCTION
 61. PRODUCTION
 62. PRODUCTION
 63. PRODUCTION
 64. PRODUCTION
 65. PRODUCTION
 66. PRODUCTION
 67. PRODUCTION
 68. PRODUCTION
 69. PRODUCTION
 70. PRODUCTION
 71. PRODUCTION
 72. PRODUCTION
 73. PRODUCTION
 74. PRODUCTION
 75. PRODUCTION
 76. PRODUCTION
 77. PRODUCTION
 78. PRODUCTION
 79. PRODUCTION
 80. PRODUCTION
 81. PRODUCTION
 82. PRODUCTION
 83. PRODUCTION
 84. PRODUCTION
 85. PRODUCTION
 86. PRODUCTION
 87. PRODUCTION
 88. PRODUCTION
 89. PRODUCTION
 90. PRODUCTION
 91. PRODUCTION
 92. PRODUCTION
 93. PRODUCTION
 94. PRODUCTION
 95. PRODUCTION
 96. PRODUCTION
 97. PRODUCTION
 98. PRODUCTION
 99. PRODUCTION
 100. PRODUCTION

UNION OIL COMPANY OF CALIFORNIA
 RINCON UNIT WELLS
 RINCON FIELD
 RIO ARRIBA COUNTY, NEW MEXICO
 PRODUCTION FACILITIES SCHEMATIC
 TYPICAL DUAL GALLUP/DAKOTA PRODUCER



1. Wellhead
 2. 400 BBL Welded Steel Tank API 12F
 3. Double lined Production pit w/ Leak Detection
 4. Separator/Dehydrator Skid
 5. Meter Run w/ Meter House (Gas Sales)
- ▷◁ Bealed Lead Line (Oil Sales)

Not to Scale