

UNITED STATES
DEPARTMENT OF THE INTERIOR
BUREAU OF LAND MANAGEMENT

APPLICATION FOR PERMIT TO DRILL OR DEEPEN

1a. TYPE OF WORK

DRILL ☒DEEPEN ☐

b. TYPE OF WELL

OIL
WELL ☐GAS
WELL ☒

OTHER

SINGLE
ZONE ☐MULTIPLE
ZONE ☐2. NAME OF OPERATOR **MERIT ENERGY 14591**
(214) 701-837712221 Merit Drive
Dallas, Texas3. ADDRESS AND TELEPHONE **On Site Technologies**
(505) 325-8786P.O. Box 2606
Farmington, NM 874994. LOCATION OF WELL (Report location clearly and in accordance with any State requirements.)*
At surface

1010' FNL & 1450' FEL

At proposed prod. zone

SAME

14. DISTANCE IN MILES AND DIRECTION FROM NEAREST TOWN OR POST OFFICE*

Approximately 15 miles from Lindrith, NM

15. DISTANCE FROM PROPOSED

LOCATION TO NEAREST

PROPERTY OR LEASE LINE, FT.

(Also to nearest drlg. unit line, if any)

1010'

16. NO. OF ACRES IN LEASE

2560

18. DISTANCE FROM PROPOSED LOCATION*
TO NEAREST WELL, DRILLING, COMPLETED,
OR APPLIED FOR, ON THIS LEASE, FT.

150'

19. PROPOSED DEPTH

7800'

17. NO. OF ACRES ASSIGNED
TO THIS WELL

160

20. ROTARY OR CABLE TOOLS

ROTARY

21. ELEVATIONS (Show whether DF, RT, GR, etc.)

6840'

22. APPROX. DATE WORK WILL START*

AS SOON AS POSSIBLE

23.

PROPOSED CASING AND CEMENTING PROGRAM

SIZE OF HOLE	GRADE, SIZE OF CASING	WEIGHT PER FOOT	SETTING DEPTH	QUANTITY OF CEMENT
12 1/2	K55	24#	300'	450sx Class B
7 7/8	K55	15.5#	7800'	Lead 230sx 50/50 Pozmix Tail 120sx Class B Second Stage: Lead 450sx Pozmix; Tail 50sx Class B

SEE ATTACHED DRILLING PROGRAM

RECEIVED
JUN 20 1994
OIL CON. DIV.
DIST. 3

IN ABOVE SPACE DESCRIBE PROPOSED PROGRAM: If proposal is to deepen, give data on present productive zone and proposed new productive zone. If proposal is to drill or deepen directionally, give pertinent data on subsurface locations and measured and true vertical depths. Give blowout preventer program, if any.

24.

SIGNED

Tora Baldwin

TITLE

AGENT FOR
MERIT ENERGY

DATE

4-13-94

(This space for Federal or State office use)

PERMIT NO.

APPROVAL DATE

Application approval does not warrant or certify that the applicant holds legal or equitable title to those rights in the subject lease which would entitle the applicant to conduct operations thereon.

CONDITIONS OF APPROVAL, IF ANY:

APPROVED BY

Yolanda Vena

TITLE

Acting AREA MANAGER
RIO PUERCO RESOURCE AREA

DATE

JUN 15 1994

*See Instructions On Reverse Side

NMOCD

Submit to Appropriate
District Office
State Lease - 4 copies
Fee Lease - 3 copies

State of New Mexico
Energy, Minerals and Natural Resources Department

Form C-102
Revised 1-1-89

OIL CONSERVATION DIVISION

P.O. Box 2088
Santa Fe, New Mexico 87504-2088

DISTRICT I
P.O. Box 1980, Hobbs, NM 88240

DISTRICT II
P.O. Drawer DD, Artesia, NM 88210

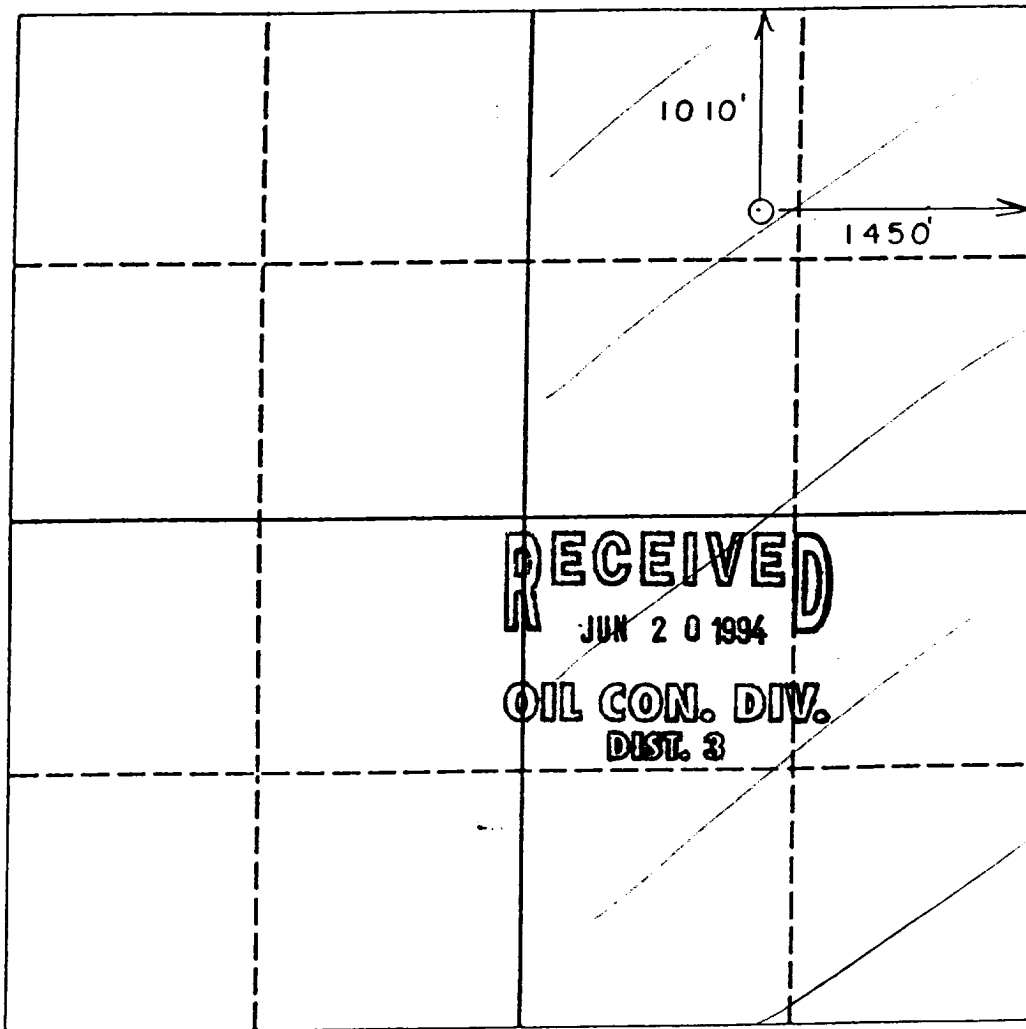
DISTRICT III
1000 Rio Brazos Rd., Aztec, NM 87410

WELL LOCATION AND ACREAGE DEDICATION PLAT

All Distances must be from the outer boundaries of the section

Operator MERIT ENERGY COMPANY			Lease JICARILLA E		Well No. E-7-E
Unit Letter B	Section 15	Township 26 N.	Range 4 W.	County RIO ARriba	
Actual Footage Location of Well: 1010 feet from the NORTH line and 1450 feet from the EAST line					
Ground level Elev. 6840'	Producing Formation DAKOTA		Pool BASIN	Dedicated Acreage E/ 320 Acres	

- Outline the acreage dedicated to the subject well by colored pencil or hatchure marks on the plat below.
- If more than one lease is dedicated to the well, outline each and identify the ownership thereof (both as to working interest and royalty).
- If more than one lease of different ownership is dedicated to the well, have the interest of all owners been consolidated by communitization, unitization, force-pooling, etc.?
☐ Yes ☐ No If answer is "yes" type of consolidation _____
If answer is "no" list the owners and tract descriptions which have actually been consolidated. (Use reverse side of this form if necessary). _____
No allowable will be assigned to the well until all interests have been consolidated (by communitization, unitization, forced-pooling, or otherwise) or until a non-standard unit, eliminating such interest, has been approved by the Division.



OPERATOR CERTIFICATION

I hereby certify that the information contained herein is true and complete to the best of my knowledge and belief.

Signature

Printed Name

TORA BALDWIN

Position

ENGINEERING TECH.
Company

ON SITE TECHNOLOGIES

Date **LTD.**

03/16/94

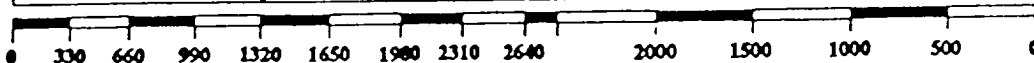
SURVEYOR CERTIFICATION

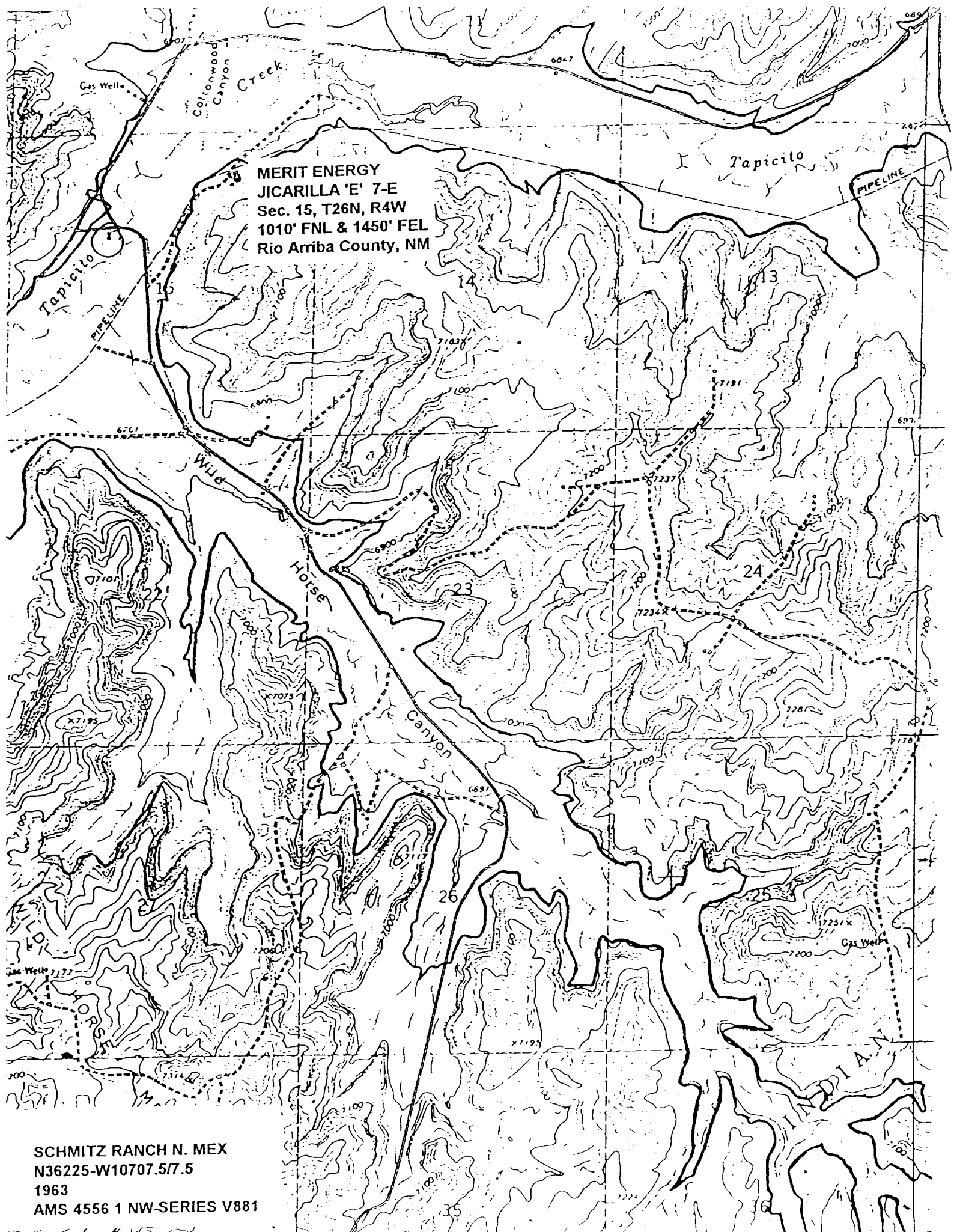
I hereby certify that the well location shown on this plat was plotted from field notes of actual surveys made by me or under my supervision, and that the same is true and correct to the best of my knowledge and belief.

Date Surveyed

Signature & Seal of
Professional Surveyor

Certificate No.





MERIT ENERGY
JICARILLA 'E' 7-E
Sec. 15, T26N, R4W
1010' FNL & 1450' FEL
Rio Arriba County, NM

SCHMITZ RANCH N. MEX
N36225-W10707.5/7.5
1963
AMS 4556 1 NW-SERIES V881