

UNITED STATES  
DEPARTMENT OF THE INTERIOR  
GEOLOGICAL SURVEY

## APPLICATION FOR PERMIT TO DRILL, DEEPEN, OR PLUG BACK

## 1a. TYPE OF WORK

DRILL ☒DEEPEN ☐PLUG BACK ☐

## b. TYPE OF WELL

OIL  
WELL ☐GAS  
WELL ☒

OTHER

SINGLE  
ZONE ☒MULTIPLE  
ZONE ☐

## 2. NAME OF OPERATOR

ODESSA NATURAL CORPORATION

## 3. ADDRESS OF OPERATOR

P. O. Box 3908, Odessa, Texas 79760

## 4. LOCATION OF WELL (Report location clearly and in accordance with any State requirements.)\*

At surface

1140' FNL, 1080' FEL

At proposed prod. zone

Same

## 14. DISTANCE IN MILES AND DIRECTION FROM NEAREST TOWN OR POST OFFICE\*

Not Applicable

## 15. DISTANCE FROM PROPOSED\*

LOCATION TO NEAREST  
PROPERTY OR LEASE LINE, FT.  
(Also to nearest drlg. unit line, if any)

1080'

## 16. NO. OF ACRES IN LEASE

480

17. NO. OF ACRES ASSIGNED  
TO THIS WELL

320

18. DISTANCE FROM PROPOSED LOCATION\*  
TO NEAREST WELL, DRILLING, COMPLETED,  
OR APPLIED FOR, ON THIS LEASE, FT.

## 19. PROPOSED DEPTH

6530

## 20. ROTARY OR CABLE TOOLS

Rotary

## 21. ELEVATIONS (Show whether DF, RT, GR, etc.)

6697' GL

## 22. APPROX. DATE WORK WILL START\*

7-1-77

## 23.

## PROPOSED CASING AND CEMENTING PROGRAM

SIZE OF HOLE	SIZE OF CASING	WEIGHT PER FOOT	SETTING DEPTH	QUANTITY OF CEMENT
12-1/4"	8-5/8"	24.0	250'	250 sacks
7-7/8"	4-1/2"	10.50	6530	To be determined

It is proposed to drill this well with rotary tools, using oil base mud as circulation medium, through the Dakota Formation. Possible productive zones in the Dakota Formation will be completed. Production casing will be cemented in such a manner as to protect production casing from Mesa Verde waters.

Estimated Formation Tops

Pictured Cliffs	1820'	Greenhorn	6220'
Cliff House	2710	Graneros	6280
Gallup	5320	Dakota	6330

The N/2 Section 25 is dedicated to this well.

*Gas is dedicated*  
IN ABOVE SPACE DESCRIBE PROPOSED PROGRAM: If proposal is to deepen or plug back, give data on present productive zone and proposed new productive zone. If proposal is to drill or deepen directionally, give pertinent data on subsurface locations and measured and true vertical depths. Give blowout preventer program, if any.

24. For: Odessa Natural Corporation President, Walsh Engineering

SIGNATURE

*Edwell N. Walsh*  
Edwell N. Walsh, P. E.

TITLE

&amp; Production Corp.

DATE

May 10, 1977

(This space for Federal or State office use)

PERMIT NO.

APPROVAL DATE

APPROVED BY

TITLE

DATE

CONDITIONS OF APPROVAL, IF ANY:

\*See Instructions On Reverse Side

NEW MEXICO OIL CONSERVATION COMMISSION  
WELL LOCATION AND ACREAGE DEDICATION PLAT

Form C-102  
Supersedes C-128  
Effective 1-1-65

All distances must be from the outer boundaries of the Section.

Operator <b>Odessa Natural Corporation</b>			Lease <b>Gulf-Little-Federal 35</b>		Well No. <b>1</b>
Unit Letter <b>A</b>	Section <b>25</b>	Township <b>25N</b>	Range <b>10W</b>	County <b>San Juan</b>	
Actual Footage Location of Well: <b>1140</b> feet from the <b>North</b> line and <b>1080</b> feet from the <b>East</b> line					
Ground Level Elev. <b>6697</b>	Producing Formation <b>Dakota</b>		Pool <b>Basin Dakota /</b>		Dedicated Acreage: <b>320</b> Acres

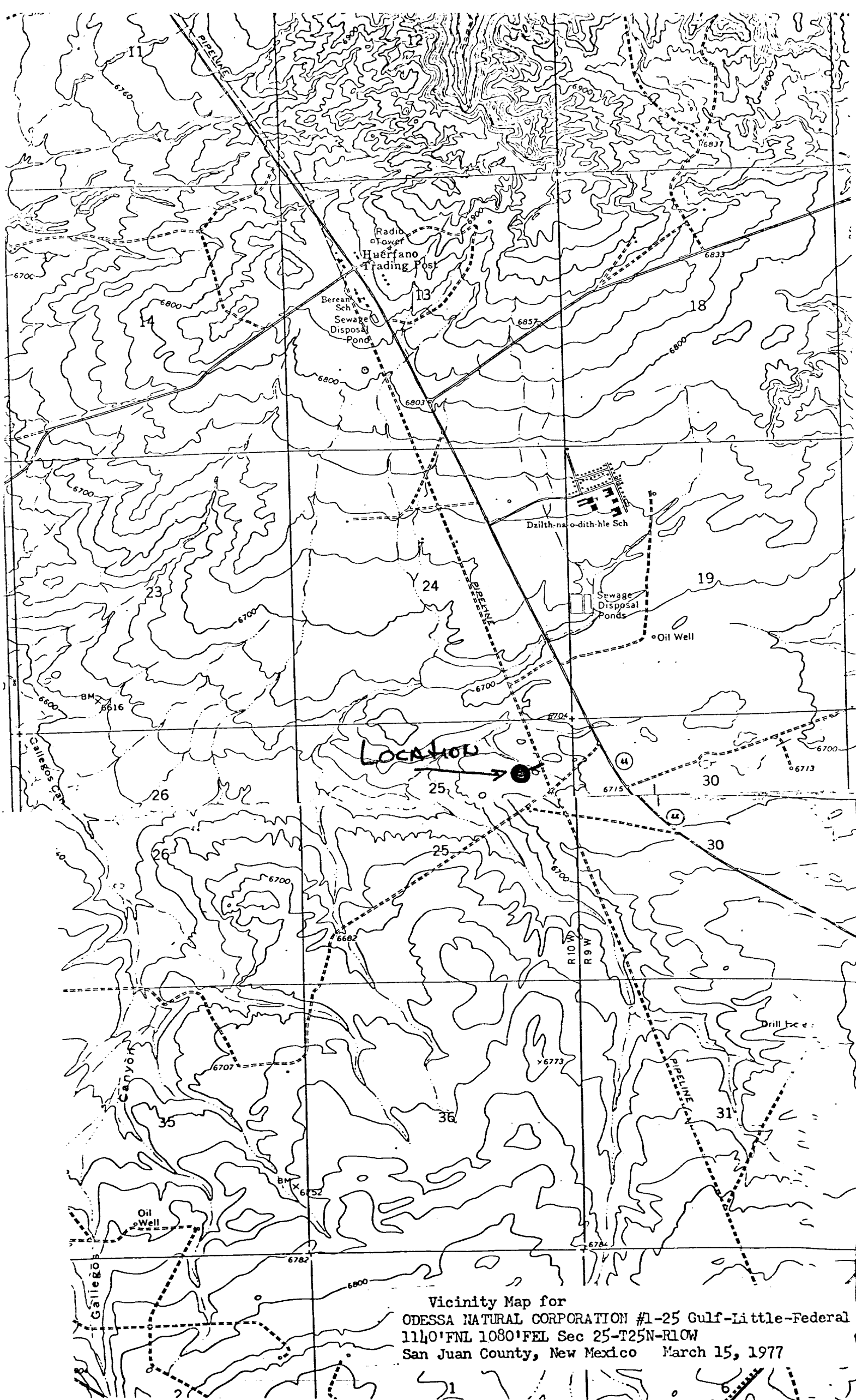
1. Outline the acreage dedicated to the subject well by colored pencil or hachure marks on the plat below.
2. If more than one lease is dedicated to the well, outline each and identify the ownership thereof (both as to working interest and royalty).
3. If more than one lease of different ownership is dedicated to the well, have the interests of all owners been consolidated by communitization, unitization, force-pooling, etc?

☒ Yes ☐ No If answer is "yes," type of consolidation Communitization

If answer is "no," list the owners and tract descriptions which have actually been consolidated. (Use reverse side of this form if necessary.) \_\_\_\_\_

No allowable will be assigned to the well until all interests have been consolidated (by communitization, unitization, forced-pooling, or otherwise) or until a non-standard unit, eliminating such interests, has been approved by the Commission.

	CERTIFICATION	
	<p>I hereby certify that the information contained herein is true and complete to the best of my knowledge and belief.</p> <p>For: <b>Odessa Natural Corp.</b></p>	
	<p>Name <u>Ewell N. Walsh</u></p> <p>Position <b>Ewell N. Walsh, P.E. President, Walsh Engr. &amp; Production Corporation</b></p>	
	<p>Date <b>May 10, 1977</b></p>	
<p>I hereby certify that the well location shown on this plat was plotted from field notes of actual surveys made by me or under my supervision, and that the same is true and correct to the best of my knowledge and belief.</p>		
<p>Date Surveyed <b>March 15, 1977</b></p>		
<p>Registered Professional Engineer and/or Land Surveyor <u>Fred B. Kerr Jr.</u></p>		
<p>Certificate No. <b>3950</b></p>		



DEVELOPMENT PLAN  
ODESSA NATURAL CORPORATION  
GULF LITTLE FEDERAL, No. 1-25  
1140'FNL, 1080'FEL, Section 25-T25N-R10W  
San Juan County, New Mexico

1. Existing roads shown on attached plat.
2. Planned access from existing road is approximately 200' to new location.
3. Location - See above.
4. No additional wells are planned on this lease at this time.
5. Production equipment or storage facilities proposed for the well will be installed on location.
6. Water will be obtained from water well at Hilltop Liquor Store or Gallegos Trading Post.
7. Waste materials will be buried on location or in reserve pit.
8. No permanent camp is planned. A trailer house will be used on location during drilling process.
9. No airstrip proposed.
10. See attached plat for layout.
11. Pits will be filled, location cleaned up, and area not in use for producing well will be reseeded.

DEVELOPMENT PLAN

Page 2 of 2

12. Lessee's or operator's representative.


Ewell N. Walsh: 325-8203; Radio Dispatch 325-1873, Car 620.  
Address: P. O. Box 254, Farmington, New Mexico 87401

13. CERTIFICATION:

I hereby certify that I, or persons under my direct supervision, have inspected the proposed drillsite and access route; that I am familiar with the conditions which presently exist; that the statements made in this plan are, to the best of my knowledge, true and correct; and, that the work associated with the operations proposed herein will be performed by: \_\_\_\_\_

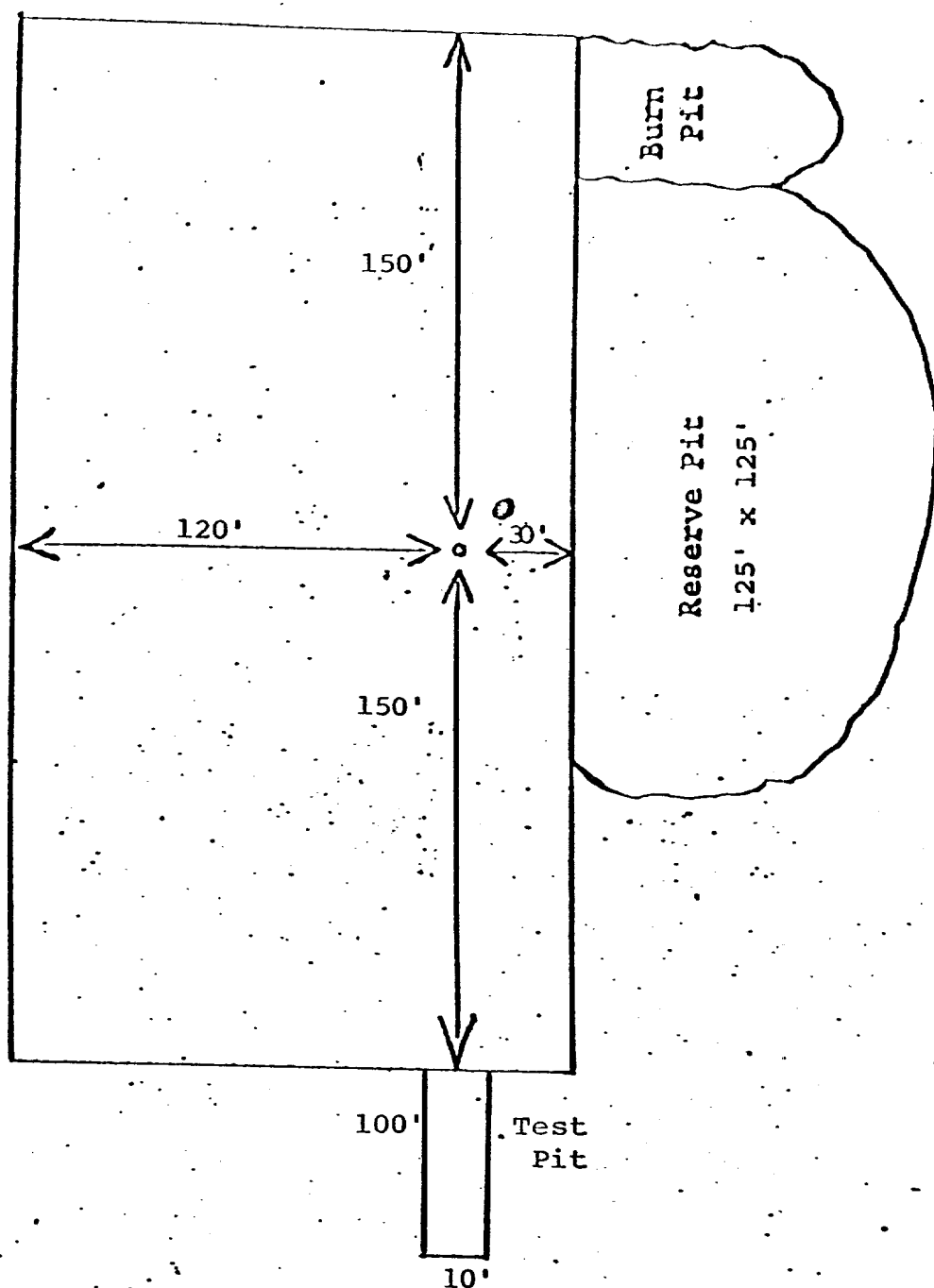
\_\_\_\_\_  
ODESSA NATURAL CORPORATION

and its contractors and subcontractors in conformity with this plan and the terms and conditions under which it is approved.



Ewell N. Walsh, P.E., President,  
Walsh Engineering & Production  
Corporation

DEVELOPMENT PLAN  
ODESSA NATURAL CORPORATION  
GULF LITTLE FEDERAL NO. 1-25  
1140' FNL, 1080' FEL, Section 25-T25N-R10W  
SAN JUAN COUNTY, NEW MEXICO



ODESSA NATURAL CORPORATION  
GULF LITTLE FEDERAL NO. 1-25  
1140'FNL, 1080'FEL Section 25-T25N-R10W  
SAN JUAN COUNTY, NEW MEXICO

Seven Point Well Control Program

1. Surface Casing.  
See Application for Permit to Drill.
2. Spools and Flanges.
  - A. Surface Casing - 10", Series 900, 3000 psi W.P.
  - B. Production, 10", Series 900, 3000 psi W.P.
  - C. Tubing Head - Series 900, 3000 psi. W.P.
3. Intermediate Casing.  
None
4. Blowout Preventers  
Production Hole - 10", 3000 psi  
Fill, kill and choke manifold - 5000 psi. W.P.
5. Additional Equipment (If necessary)
  - A. Kelly Cock
  - B. Bit Float
  - C. Degasser
  - D. Pit Level Indicator
  - E. Sub with Valve for  
drill pipe.
6. Anticipated Bottom Hole Pressure.  
2700 psi. Current mud program is for 9.2 lb./gal mud with hydrostatic head of 3200 psi at 6600 feet. Mud weight will be increased if necessary for higher pressures.
7. Drilling Fluid.  
Gel-Chemical.

ODESSA NATURAL CORPORATION  
GULF LITTLE FEDERAL NO. 1-25  
1140'FNL, 1080'FEL, Section 25-T25N-R10W  
SAN JUAN COUNTY, NEW MEXICO  
BLM SEEDING REQUIREMENTS  
IN THE FARMINGTON RESOURCE AREA

1. SEED MIXTURE 2

2. TIME:

All seeding will take place between July 1 and September 15.

3. EQUIPMENT:

Seeding will be done with a disc-type drill with two boxes for various seed sizes. The drill rows will be eight to ten inches apart. The seed will be planted not less than one-half inch deep or more than one inch deep. The seeder will be followed with a drag, packer, or roller to insure uniform coverage of the seed, and adequate compaction. Drilling will be done on the contour where possible, not up and down the slope. Where slopes are too steep for contour drilling, a "cyclone" hand seeder or similar broadcast seeder will be used. Seed will then be covered to the depth described above by whatever means is practical.

4. SPECIES TO BE PLANTED IN POUNDS PURE-LIVE-SEED PER ACRE:

CRESTED WHEATGRASS (Agropyron desertorum) -  $3\frac{1}{4}$  lbs.

FOURWING SALTBUSH (dewinged) (Atriplex canescens) -  $\frac{1}{2}$  lb.

SAND DROPSEED (Sporobolus cryptandrus) -  $\frac{3}{4}$  lb.

~~WINTERFAT (Eurotia lanata) -  $\frac{1}{2}$  lb.~~

ALKALI SACATON (Sporobolus airoides) -  $\frac{3}{4}$  lb.

5. Surface Equipment Color.

Use Paint:

Grey Federal Standard No. 595-36357