

UNITED STATES  
DEPARTMENT OF THE INTERIOR  
GEOLOGICAL SURVEY

30-045-25870

APPLICATION FOR PERMIT TO DRILL, DEEPEN, OR PLUG BACK

1a. TYPE OF WORK  
 DRILL  DEEPEN  PLUG BACK   
 b. TYPE OF WELL  
 OIL WELL  GAS WELL  OTHER Wildcat SINGLE ZONE  MULTIPLE ZONE

2. NAME OF OPERATOR  
Amoco Production Company

3. ADDRESS OF OPERATOR  
501 Airport Drive, Farmington, NM 87401

4. LOCATION OF WELL (Report location clearly and in accordance with any State requirements.)\*  
 At surface 1800' FNL x 1650' FWL  
 At proposed prod. zone Same

14. DISTANCE IN MILES AND DIRECTION FROM NEAREST TOWN OR POST OFFICE\*  
20 miles southwest of Shiprock, New Mexico

15. DISTANCE FROM PROPOSED\* LOCATION TO NEAREST PROPERTY OR LEASE LINE, FT. (Also to nearest drig. unit line, if any!)  
1650'

18. DISTANCE FROM PROPOSED LOCATION\* TO NEAREST WELL, DRILLING COMPLETED, OR APPLIED FOR, ON THIS LEASE, FT.  
19. PROPOSED DEPTH  
10,500

21. ELEVATIONS (Show whether DF, RT, GR, etc.)  
5507' GL

23. PROPOSED CASING AND CEMENTING PROGRAM  
 DRILLING OPERATIONS TO BE PERFORMED ARE SUBJECT TO COMPLIANCE WITH ATTACHED "GENERAL ORDER" AND "PROPOSED CASING AND CEMENTING PROGRAM"

SIZE OF HOLE	SIZE OF CASING	WEIGHT PER FOOT	SETTING DEPTH
17-1/2"	13-5/8"	51# K-55	300'
12-1/4"	9-5/8"	32.3# K-55	5,300'
8-3/4"	7" liner	20-26# K-55	5,000'-10,500'

5. LEASE DESIGNATION AND SERIAL NO.  
NOO-C-14-20-5507  
 6. IF INDIAN, ALLOTTEE OR TRIBE NAME  
Navajo Tribe  
 7. UNIT AGREEMENT NAME  
 8. FARM OR LEASE NAME  
Navajo Tribal "AH"  
 9. WELL NO.  
1  
 10. FIELD AND POOL, OR WILDCAT  
Wildcat Devonian  
 11. SEC., T., R., M., OR BLK. AND SURVEY OR AREA  
SE/NW, Section 10, T25N, R17W  
 12. COUNTY OR PARISH  
San Juan  
 13. STATE  
New Mexico

17. NO. OF ACRES ASSIGNED TO THIS WELL  
40  
 20. ROTARY OR CABLE TOOLS  
Rotary  
 22. APPROX. DATE WORK WILL START\*  
As soon as permitted  
 This section is subject to administrative appeal per 42 CFR 290.  
 QUANTITY OF CEMENT 290.

The well will be drilled to the surface casing point using native mud. The well will then be drilled to TD with a low solids non-dispersed mud system. Completion will be designed after evaluation of open hole logs. Copies of all logs will be filed upon completion. Additional information required by NTL for the application to drill and a multi-point surface use plan are attached.

RECEIVED  
JAN 19 1984  
OIL CON. DIV.  
DIST 3

IN ABOVE SPACE DESCRIBE PROPOSED PROGRAM: If proposal is to drill or plug back, give data on present productive zone and proposed new productive zone. If proposal is to drill or deepen directionally, give pertinent data on subsurface locations and measured and true vertical depths. Give blowout preventer program, if any.

SIGNED: Dale H. Shaver TITLE: District Engineer DATE: 10/25/83

APPROVED AS AMENDED

PERMIT NO. \_\_\_\_\_ APPROVAL DATE \_\_\_\_\_

BY: [Signature] TITLE: NMOCC  
 DATE: JAN 20 1984  
 M. MILLENBACH AREA MANAGER  
 [Signature]

# OIL CONSERVATION DIVISION

STATE OF NEW MEXICO  
ENERGY AND MINERALS DEPARTMENT

P. O. BOX 2088  
SANTA FE, NEW MEXICO 87501

Form C-107  
Revised 10-1-78

All distances must be from the outer boundaries of the Section.

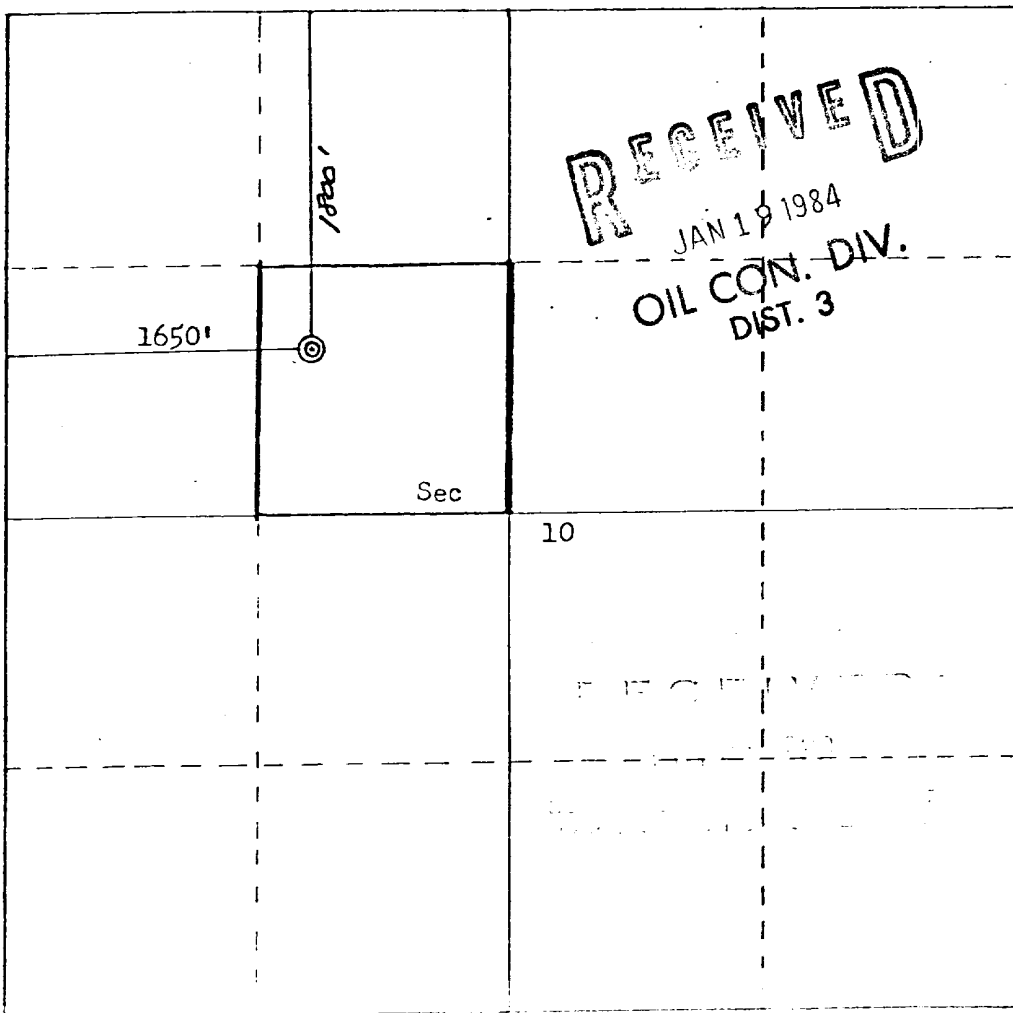
Operator <b>Amoco Production Company</b>		Lease <b>Navajo Tribal AH</b>		Well No. <b>1</b>
Unit Letter <b>F</b>	Section <b>10</b>	Township <b>25N</b>	Range <b>17W</b>	County <b>San Juan</b>
Actual Footage Location of Well: <b>1800</b> feet from the <b>North</b> line and <b>1650</b> feet from the <b>West</b> line				
Ground Level Elev. <b>5507</b>	Producing Formation <b>Wildcat</b>	Pool <b>Wildcat</b>	Dedicated Acreage: <b>40</b> Acres	

1. Outline the acreage dedicated to the subject well by colored pencil or hachure marks on the plat below.
2. If more than one lease is dedicated to the well, outline each and identify the ownership thereof (both as to working interest and royalty).
3. If more than one lease of different ownership is dedicated to the well, have the interests of all owners been consolidated by communitization, unitization, force-pooling, etc?

Yes     No    If answer is "yes," type of consolidation \_\_\_\_\_

If answer is "no," list the owners and tract descriptions which have actually been consolidated. (Use reverse side of this form if necessary.) \_\_\_\_\_

No allowable will be assigned to the well until all interests have been consolidated (by communitization, unitization, forced-pooling, or otherwise) or until a non-standard unit, eliminating such interests, has been approved by the Commission.



### CERTIFICATION

I hereby certify that the information contained herein is true and complete to the best of my knowledge and belief.

*Dale H. Shoemaker*

Name  
**Dale H. Shoemaker**

Position  
**District Engineer**

Company  
**Amoco Production Company**

Date  
**October 25, 1983**

I hereby certify that the well location shown on this plat was plotted from field notes of actual surveys made by me or under my supervision, and that the same is true and correct to the best of my knowledge and belief.

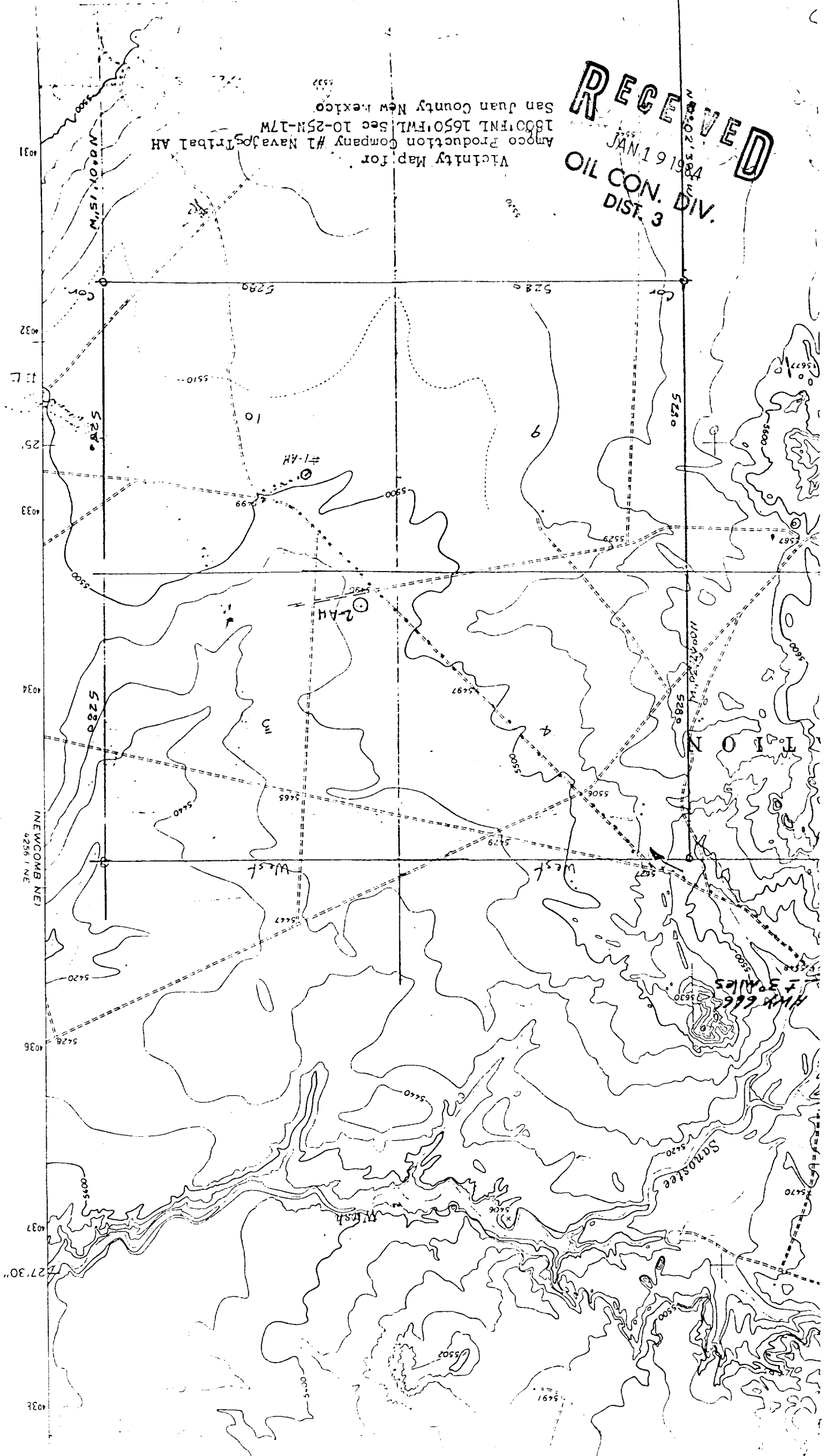
Date Surveyed  
**October 23, 1983**

Registered Professional Engineer and Land Surveyor  
*Fred B. Kerr Jr.*  
**Fred B. Kerr Jr.**

3950

RECEIVED  
JAN 19 1916  
OIL CON. DIV.  
DIST. 3

San Juan County New Mexico  
Amoco Production Company #1 Navajo Tribal AH  
1800 F.M.L. 1650 F.M.L. Sec 10-25M-17M  
Vicinity Map for



High 666  
30 Miles

31  
32  
25  
33  
34  
36  
37  
38

NEWCOMB NE  
4256 1 NE

CON.

S. 250.0.0.0

S. 250.0.0.0

S. 250.0.0.0

S. 250.0.0.0

S. 250.0.0.0

M. 1510.0.0.0

M. 1510.0.0.0

M. 1510.0.0.0

M. 1510.0.0.0

M. 1510.0.0.0

M. 1510.0.0.0

5280

5280

5280

5280

5280

5280

5300

5300

5300

5300

5300

5300

5400

5400

5400

5400

5400

5400

5420

5420

5420

5420

5420

5420

5440

5440

5440

5440

5440

5440

5460

5460

5460

5460

5460

5460

5470

5470

5470

5470

5470

5470

5490

5490

5490

5490

5490

5490

5500

5500

5500

5500

5500

5500

5510

5510

5510

5510

5510

5510

5520

5520

5520

5520

5520

5520

5530

5530

5530

5530

5530

5530

5540

5540

5540

5540

5540

5540

5550

5550

5550

5550

5550

5550

5560

5560

5560

5560

5560

5560

5570

5570

5570

5570

5570

5570

5580

5580

5580

5580

5580

5580

5590

5590

5590

5590

5590

5590

5600

5600

5600

5600

5600

5600

5610

5610

5610

5610

5610

5610

5620

5620

5620

5620

5620

5620

5630

5630

5630

5630

5630

5630

5640

5640

5640

5640

5640

5640

5650

5650

5650

5650

5650

5650

5660

5660

5660

5660

5660

5660

5670

5670

5670

5670

5670

5670

5680

5680

5680

5680

5680

5680

5690

5690

5690

5690

5690

5690

5700

5700

5700

5700

5700

5700

5710

5710

5710

5710

5710

5710

5720

5720

5720

5720

5720

5720

5730

5730

5730

5730

5730

5730

5740

5740

5740

5740

5740

5740

5750

5750

5750

5750

5750

5750

5760

5760

5760

5760

5760

5760

5770

5770

5770

5770

5770

5770

5780

5780

5780

5780

5780

5780

5790

5790

5790

5790

5790

5790

5800

5800

5800

5800

5800

5800

5810

5810

5810

5810

5810

5810

5820

5820

5820

5820

5820

5820

5830

5830

5830

5830

5830

5830

5840

5840

5840

5840

5840

5840

5850

5850

5850

5850

5850

5850

5860

5860

5860

5860

5860

5860

5870

5870

5870

5870

5870

5870

5880

5880

5880

5880

5880

5880

5890

5890

5890

5890

5890

5890

5900

5900

5900

5900

5900

5900