

3 Tribal Trust  
1 Berenergy

1 Norcen 1 Chorney (Seabrook)

UNITED STATES  
DEPARTMENT OF THE INTERIOR  
GEOLOGICAL SURVEY

## APPLICATION FOR PERMIT TO DRILL, DEEPEN, OR PLUG BACK

## 1a. TYPE OF WORK

DRILL ☒DEEPEN ☐PLUG BACK ☐

## b. TYPE OF WELL

OIL  
WELL ☐GAS  
WELL ☒

OTHER

SINGLE  
ZONE ☒MULTIPLE  
ZONE ☐

## 2. NAME OF OPERATOR

DUGAN PRODUCTION CORP.

## 3. ADDRESS OF OPERATOR

P.O. Box 420, Farmington, NM 87499

## 4. LOCATION OF WELL (Report location clearly and in accordance with any State requirements.)\*

At surface

990' ENL & 990' FEL  
At proposed prod. zone

## 14. DISTANCE IN MILES AND DIRECTION FROM NEAREST TOWN OR POST OFFICE\*

Approx. 6 miles Southwest of EPNG Chaco Plant, NM

## 15. DISTANCE FROM PROPOSED\*

LOCATION TO NEAREST  
PROPERTY OR LEASE LINE, FT.  
(Also to nearest drg. unit line, if any)

990'

## 16. NO. OF ACRES IN LEASE

1599.72

17. NO. OF ACRES ASSIGNED  
TO THIS WELL

320

18. DISTANCE FROM PROPOSED LOCATION\*  
TO NEAREST WELL, DRILLING, COMPLETED,  
OR APPLIED FOR, ON THIS LEASE, FT.

466' from

## 19. PROPOSED DEPTH

1295'

## 20. ROTARY OR GEAR POOLS

Rotary

## 21. ELEVATIONS (Show whether DF, RT, GR, etc.)

GL 6282'

This section is subject to technical and  
procedural review pursuant to 43 CFR 8125.8  
and appeal pursuant to 43 CFR 8125.1.  
PROPOSED CASING AND CEMENTING PROGRAM

## 22. APPROX. DATE WORK WILL START

ASAP

DRILLING OPERATIONS AUTHORIZED ARE  
SUBJECT TO COMPLIANCE WITH ATTACHED  
"GENERAL REQUIREMENTS"

SIZE OF HOLE	SIZE OF CASING	WEIGHT PER FOOT	SETTING DEPTH	"GENERAL REQUIREMENTS"
9-7/8"	7"	20#	90'	40 sx (48 cu.ft.) circ. to surf.
6-1/4"	4 1/2"	10.5#	1295'	115 sx (197 cu.ft.) circ. to surf.

Plan to drill a 9-7/8" hole and set 90' of 7" OD, 20#, J-55 surface casing; then plan to drill a 6-1/4" hole to total depth with gel-water-mud program to test Fruitland Coal formation. Plan to run IES and CDL logs. If determined productive, will run 4 1/2", 10.5#, J-55 casing, selectively perforate, frac, clean out after frac and complete well.

RECEIVED

APR 15 1991

OIL CON. DIV.  
DIST. 3

IN ABOVE SPACE DESCRIBE PROPOSED PROGRAM: If proposal is to deepen or plug back, give data on present productive zone and proposed new productive zone. If proposal is to drill or deepen directionally, give pertinent data on subsurface locations and measured and true vertical depths. Give blowout preventer program, if any.

24.

SIGNED

TITLE Vice-President

DATE 10-10-90

(This space for Federal or State comments)

PERMIT NO.

APPROVAL DATE

APPROVED

APPROVED BY

TITLE

CONDITIONS OF APPROVAL, IF ANY:

DATE

Hold 6-104 For CH

NMOGD

\*See Instructions On Reverse Side

John Skella  
AREA MANAGER

sent to Appropriate  
State Office  
in Lease - 4 copies  
in Lease - 3 copies

State of New Mexico  
Energy, Minerals and Natural Resources Department

Form C-100  
Revised 1-1-80

OIL CONSERVATION DIVISION  
P.O. Box 2088  
Santa Fe, New Mexico 87504-2088

TRACT I  
Box 1500, Hobbs, NM 88240

TRACT II  
Lawyer DD, Artesia, NM 88210

TRACT III  
20 Rio Hondo Rd., Aztec, NM 87410

WELL LOCATION AND ACREAGE DEDICATION PLAT  
All Distances must be from the outer boundaries of the section

Owner Dugan Production Corporation			Lease Jeter Com		Well No. 2
Section A	Section 12	Township 25 North	Range 13 West	County San Juan	
Well Location of Well: 990 feet from the North line and 990 feet from the East line					
Producing Formation Fruitland Coal		Basin Fruitland Coal		Dedicated Acreage 320 Acres	

1. Outline the acreage dedicated to the subject well by colored pencil or Indian ink on the plat below.

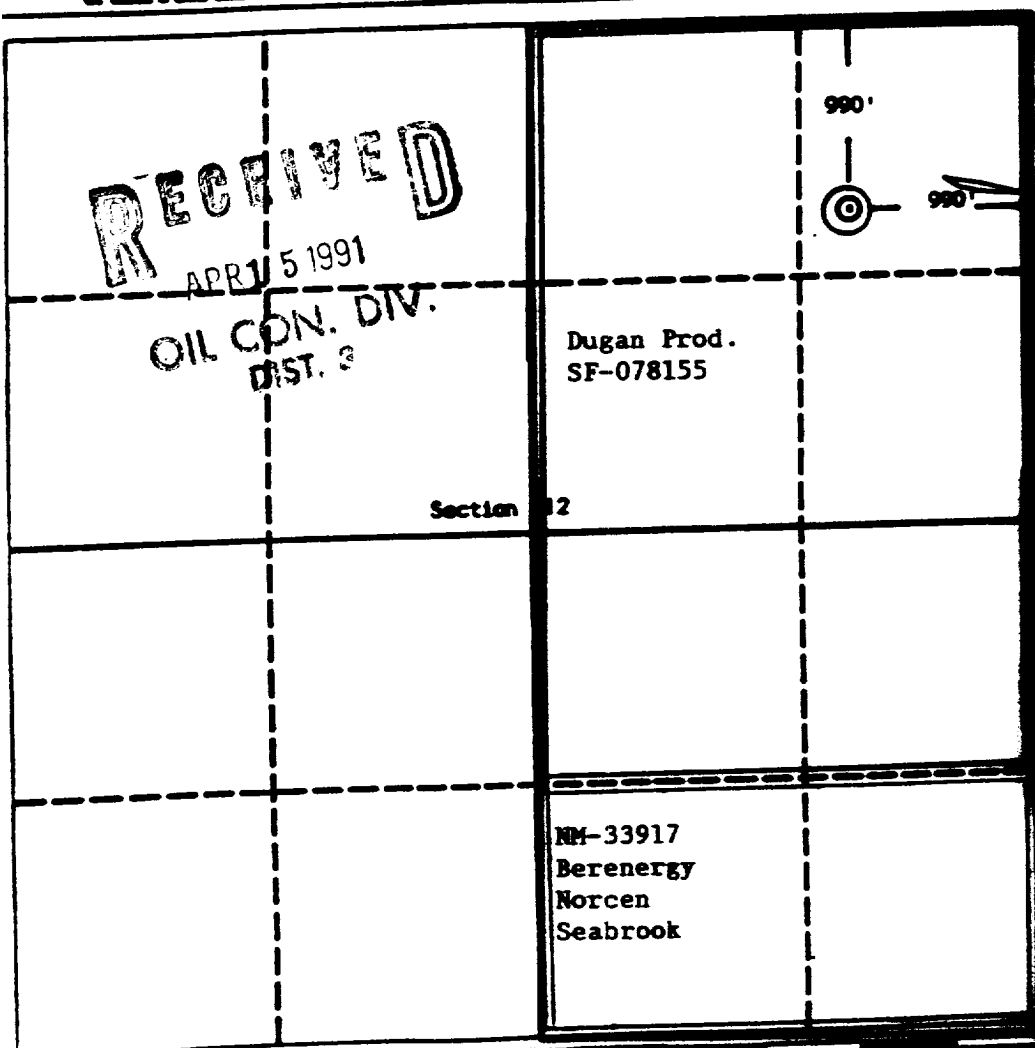
2. If more than one lease is dedicated to the well, outline each and identify the ownership thereof (both as to working interest and royalty).

3. If more than one lease of different ownership is dedicated to the well, have the interest of all owners been consolidated by communitization, unitization, farm-pooling, etc.?

☒ Yes ☐ No If answer is "yes" type of consolidation Will be communitized

If answer is "no" list the owners and tract descriptions which have actually been consolidated. (Use acreage of this farm if necessary.)

No acreage will be assigned to the well until all interests have been consolidated (by communitization, unitization, farm-pooling, or otherwise) or until a one-standard unit, eliminating such interest, has been approved by the Division.



OPERATOR CERTIFICATION

I hereby certify that the information contained herein is true and complete to the best of my knowledge and belief.

Sherman E. Dugan  
President

Vice-President  
Company

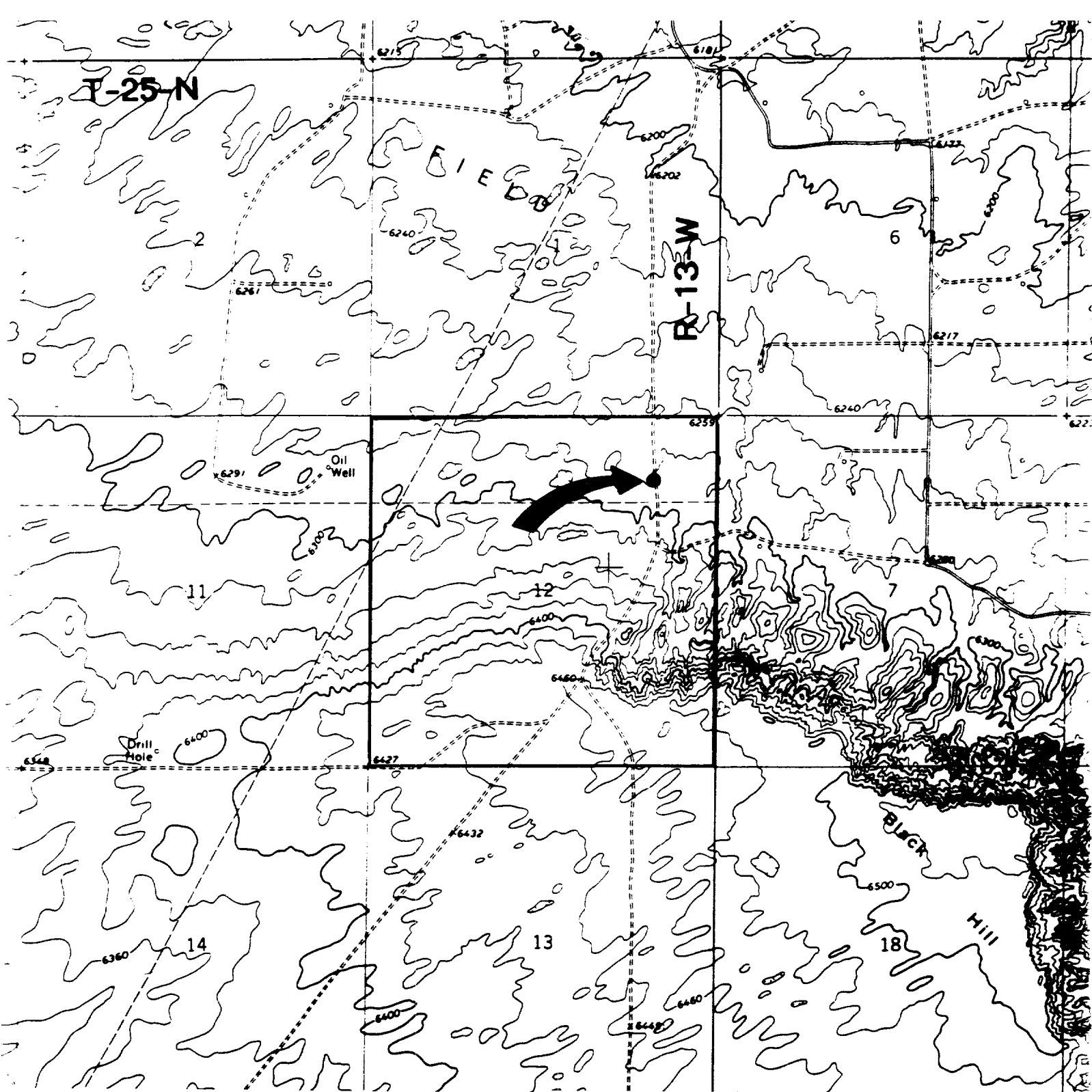
Dugan Production Corp.  
Date

10-10-90

SURVEYOR CERTIFICATION

I hereby certify that the well location shown on this plat was placed there by reference to actual survey monuments, or otherwise, and that the same is correct to the best of my knowledge and belief.

Surveyor  
August 10, 1990



### Existing Roads

### Exhibit E

Vicinity of nearest town or reference pt.

Approx. 6 miles SW of EPNG Chaco Plant

Type of surface dirt

Conditions good

Other \_\_\_\_\_

Reference map: USGS map Moncisco Wash,

N. Mex. 1966 - photoinspected 1978

### Planned Access Road(s)

### Exhibit E

Width \_\_\_\_\_ Maximum grades \_\_\_\_\_

Drainage design as required

Cuts & Fills see diagram

Surfacing material none

Turnouts

Culverts

Gates

Cattleguards

Fence cuts

Waterbars

**NO NEW ACCESS  
ROAD REQUIRED**

Access road(s) do/do not cross Fed/Ind land.

DUGAN PRODUCTION CORP. - Jeter Com #2