

UNITED STATES
DEPARTMENT OF THE INTERIOR
BUREAU OF LAND MANAGEMENT

APPLICATION FOR PERMIT TO DRILL OR DEEPEN

1a. TYPE OF WORK

DRILL ☒DEEPEN ☐

b. TYPE OF WELL

OIL ☐GAS ☒

OTHER

SINGLE ☒MULTIPLE ☐

2. NAME OF OPERATOR

ROBERT L. BAYLESS, PRODUCER LLC

3. ADDRESS AND TELEPHONE NO.

PO BOX 168 FARMINGTON, NM 87499 (505)326-2659

4. LOCATION OF WELL (Report location clearly and in accordance with any State requirements.)*

At surface

1600 FSL & 1750 FWL

At proposed prod. zone

14. DISTANCE IN MILES AND DIRECTION FROM NEAREST TOWN OR POST OFFICE*

15. DISTANCE FROM PROPOSED*

LOCATION TO NEAREST
PROPERTY OR LEASE LINE, FT.
(Also to nearest drig. unit line, if any)18. DISTANCE FROM PROPOSED LOCATION*
TO NEAREST WELL, DRILLING, COMPLETED,
OR APPLIED FOR, ON THIS LEASE, FT.

21. ELEVATIONS (Show whether DF, RT, GR, etc.)

6638 KB

23.

PROPOSED CASING AND CEMENTING PROGRAM

SIZE OF HOLE	GRADE, SIZE OF CASING	WEIGHT PER FOOT	SETTING DEPTH	QUANTITY OF CEMENT
8 3/4	J-55 7"	23.0	120	30sx (35.4 cf)
6 1/4	J-55 4 1/2"	10.5	1625	165sx (260.7 cf)

WILL DRILL 8 3/4" HOLE TO 120 FEET AND SET 120 FEET OF 7" 23.0#/ft J-55 NEW CASING. WILL CEMENT WITH 30sx (35.4 cf) OF CLASS B CEMENT, CIRCULATED TO SURFACE. WILL DRILL 6 1/4" HOLE TO 1625 FEET. CIRCULATING MEDIUM WILL BE CLEAR WATER, NATURAL MUD, AND WATER LOSS ADDITIVES. NO ABNORMAL TEMPERATURES OR PRESSURES ARE ANTICIPATED. INDUCTION AND DENSITY LOGS WILL BE RUN. WILL SET 1625 FEET OF NEW 4 1/2" 10.5#/ft J-55 ST&C CASING. WILL CEMENT WITH 165sx (260.7 cf) OF CLASS B CEMENT, CIRCULATED TO SURFACE. WE ALSO REQUEST A VARIANCE ON THE USE OF AN UPPER KELLY COCK AS THE RIG UTILIZED HAS A DOUBLE DRUM THAT USES A TRACK TO RETRACT THE KELLY, AND THE KELLY COCK LENGTHENS THE KELLY SUCH THAT CONNECTIONS CANNOT BE MADE SAFELY. WELL TIE-IN IS PART OF THIS APD.

ESTIMATED FORMATION TOPS AND BOTTOM HOLE PRESSURES:

OJO ALAMO	570 feet	
FRUITLAND	1200 feet	200 psi
PICTURED CLIFFS	1435 feet	250 psi

DRILLING OPERATIONS AUTHORIZED ARE
SUBJECT TO COMPLIANCE WITH ATTACHED
"GENERAL REQUIREMENTS"

IN ABOVE SPACE DESCRIBE PROPOSED PROGRAM: If proposal is to deepen, give data on present productive zone and proposed new productive zone. If proposal is to drill or deepen directionally, give pertinent data on subsurface locations and measured and true vertical depths. Give blowout preventer program, if any.

24.

SIGNED

TITLE ENGINEER

DATE 10/16/98

(This space for Federal or State office use)

PERMIT NO.

APPROVAL DATE

Application approval does not warrant or certify that the applicant holds legal or equitable title to those rights in the subject lease which would entitle the applicant to conduct operations thereon.

CONDITIONS OF APPROVAL, IF ANY:

APPROVED BY

TITLE

DATE

*See Instructions On Reverse Side

District I
PO Box 1980, Hobbs, NM 88241-1980
District II
PO Drawer DD, Artesia, NM 88211-0719
District III
1000 Rio Brazos Rd., Aztec, NM 87410
District IV
PO Box 2088, Santa Fe, NM 87504-2088

State of New Mexico
Energy, Minerals & Natural Resources Department

OIL CONSERVATION DIVISION
PO Box 2088
Santa Fe, NM 87504-2088

Form C-102
Revised February 21, 1994
Instructions on back
Submit to Appropriate District Office
State Lease - 4 Copies
Fee Lease - 3 Copies

☐ AMENDED REPORT

WELL LOCATION AND ACREAGE DEDICATION PLAT

¹ API Number 30-045-29708	² Pool Code 96858	³ Pool Name WILDCAT 25N10W30E WILDCAT-PICTURED CLIFFS
⁴ Property Code 23873	⁵ Property Name TRADING POST	⁶ Well Number 1
⁷ OGRID No. 150182	⁸ Operator Name ROBERT L. BAYLESS, PRODUCER LLC	⁹ Elevation 6633

¹⁰ Surface Location

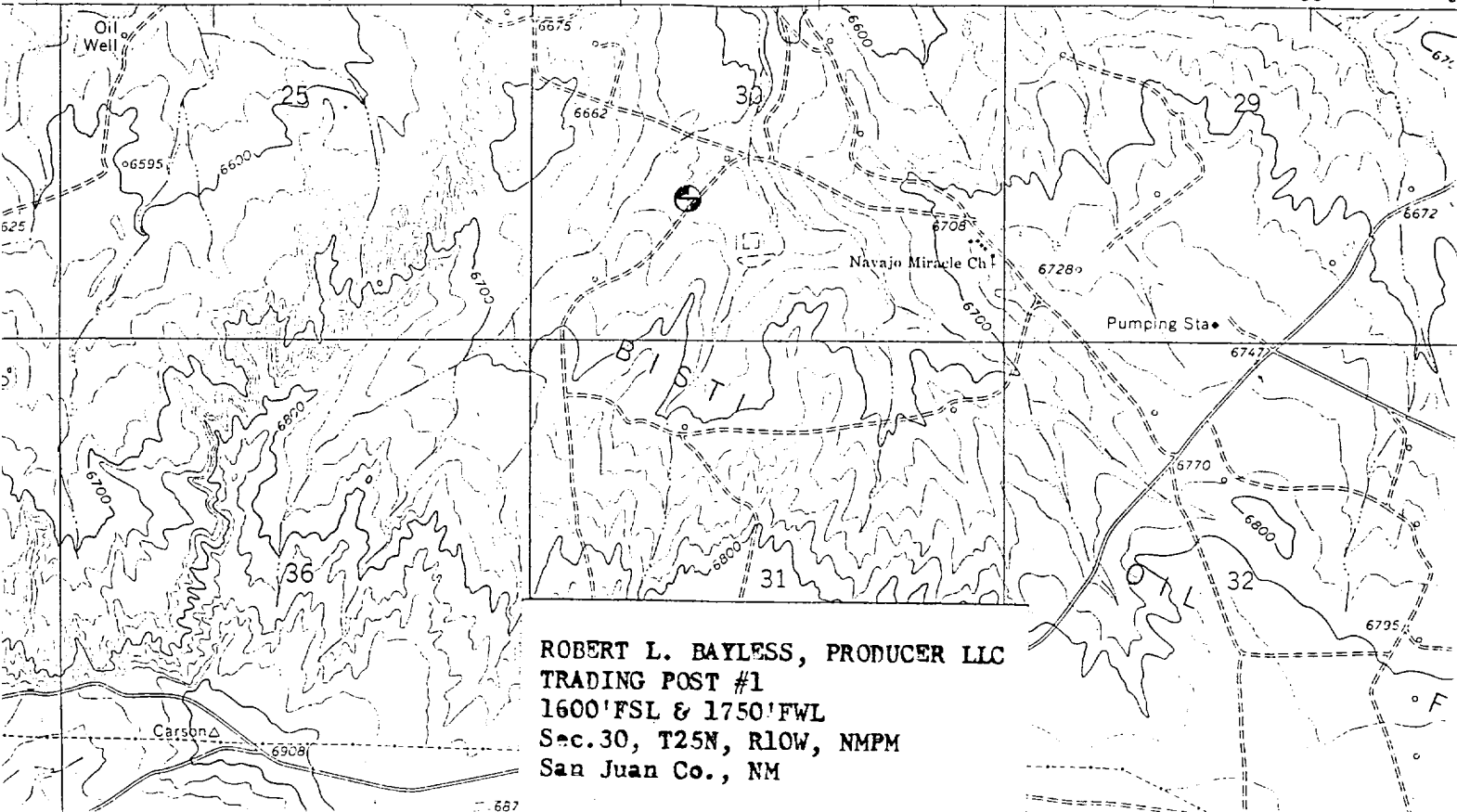
UL or lot no. K	Section 30	Township 25 N	Range 10 W	Lot Idn	Feet from the 1600	North/South line South	Feet from the 1750	East/West line West	County San Juan
--------------------	---------------	------------------	---------------	---------	-----------------------	---------------------------	-----------------------	------------------------	--------------------

¹¹ Bottom Hole Location If Different From Surface

UL or lot no.	Section	Township	Range	Lot Idn	Feet from the	North/South line	Feet from the	East/West line	County
¹² Dedicated Acres	¹³ Joint or Infill	¹⁴ Consolidation Code	¹⁵ Order No.						

NO ALLOWABLE WILL BE ASSIGNED TO THIS COMPLETION UNTIL ALL INTERESTS HAVE BEEN CONSOLIDATED
OR A NON-STANDARD UNIT HAS BEEN APPROVED BY THE DIVISION

16 (19.69) S89°50'E (2005) Lot No. (TYP.) 1 79.68cm. 2 3 1750' 4 1600' F.B.C. (19.795) S89°55'E (20035) F.B.C. (40.07) 79.90cm	17 OPERATOR CERTIFICATION I hereby certify that the information contained herein is true and complete to the best of my knowledge and belief Signature PRICE M. BAYLESS Printed Name ENGINEER Title OCTOBER 16, 1998 Date	18 SURVEYOR CERTIFICATION I hereby certify that the well location shown on this plat was plotted from field notes of actual surveys made by me or under my supervision, and that the same is true and correct to the best of my belief. 23 Sep 1998 Date of Survey Signature and Seal of Professional Surveyor William P. Mahnke II Certificate Number 8466
---	---	--



ROBERT L. BAYLESS, PRODUCER LLC
TRADING POST #1
1600'FSL & 1750'FWL
Sec. 30, T25N, R10W, NMPM
San Juan Co., NM

