

NEW MEXICO OIL CONSERVATION COMMISSION  
Santa Fe, New Mexico

## NOTICE OF INTENTION TO DRILL OR RECOMPLETE

Notice must be given to the District Office of the Oil Conservation Commission and approval obtained before drilling or recompletion begins. If changes in the proposed plan are considered advisable, a copy of this notice showing such changes will be returned to the sender. Submit this notice in **QUINTUPLICATE**. One copy will be returned following approval. See additional instructions in Rules and Regulations of the Commission.

Farmington, New Mexico

August 16, 1955

(Place)

(Date)

OIL CONSERVATION COMMISSION  
SANTA FE, NEW MEXICO

Gentlemen:

You are hereby notified that it is our intention to commence the (Drilling) (Recompletion) of a well to be known as

~~El Paso Natural Gas Company~~

San Juan 28-7 Unit

(Company or Operator)

44

A

Well No.

in

The well is

660

(Lease)

North

765

located East feet from the line of Section 2, T. 27N, R. 7W, NMPM.

(GIVE LOCATION FROM SECTION LINE)

line of Section 2, T. 27N, R. 7W, NMPM.

Blanco

Rio Arriba

Pool, E-290-28

County

If State Land the Oil and Gas Lease is No.

If patented land the owner is

Address

We propose to drill well with drilling equipment as follows: Rotary tools, using gas circulation to drill the pay section.

STATEWIDE

The status of plugging bond is

Drilling Contractor

We intend to complete this well in the

Mesa Verde

5100'

formation at an approximate depth of

feet.

## CASING PROGRAM

We propose to use the following strings of Casing and to cement them as indicated:

Size of Hole	Size of Casing	Weight per Foot	New or Second Hand	Depth	Seals Cement
12 3/4"	9 5/8"	36.0	New	170'	125
8 3/4"	7"	20.0	New	4370'	500

If changes in the above plans become advisable we will notify you immediately.

ADDITIONAL INFORMATION (If recompletion give full details of proposed plan of work.) It is proposed to sandoil fracture the Cliff House and Point Lookout formations.

The E/2 of Section 2 is dedicated to this well.

(E/2) E-290-28 (E/2NE, NESE, SWSE), E-290-6 (SESE), E-290-3 (W/2NE, NWSE).

Approved..... Aug 22 1955, 19.....  
Except as follows:

Retiled after unorthodox  
location approval

OIL CONSERVATION COMMISSION

By..... J. V. Roberts

Title..... PETROLEUM ENGINEER DIST. NO. 3

Sincerely yours,

El Paso Natural Gas Company

(Company or Operator)

By.....

Petroleum Engineer

Position.....

Send Communications regarding well to

E. J. Cool

Name.....

Box 997, Farmington, New Mexico

Address.....



COMPANY EL PASO NATURAL GAS COMPANY

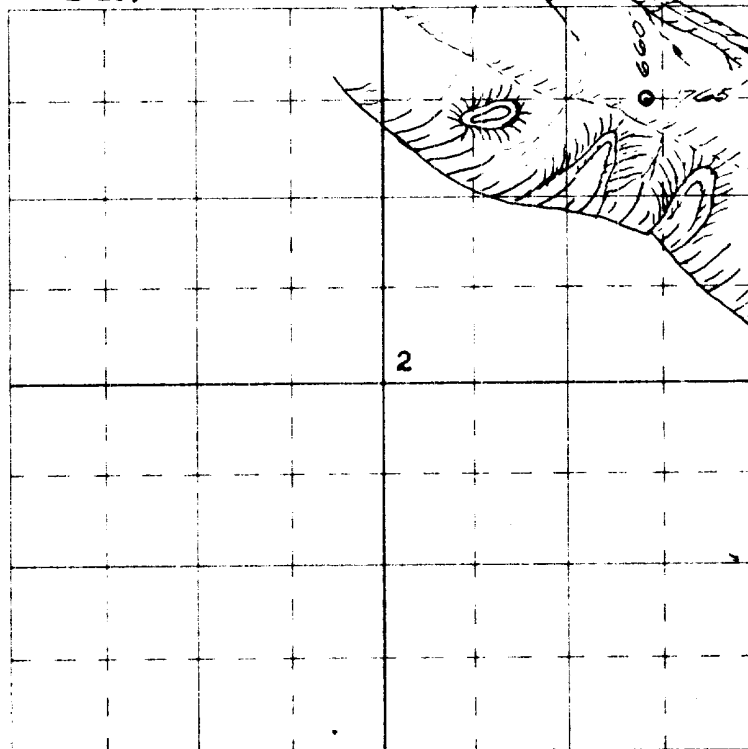
Well Name & No. SAN JUAN 28-7 Unit # 44 Lease No. E-290-28

Location 660' FROM THE NORTH LINE AND 765' FROM THE EAST LINE.

Being in NE-NE

Sec. 2, T 27 N., R 7 W., N.M.P.M., RIO ARriba CO.

Ground Elevation 6121.98 UNGRADED GROUND



Scale -- 4 inches equals 1 mile

Surveyed JUNE 21, 19 55

This is to certify that the above plat was prepared from field notes of actual surveys made by me or under my supervision and that the same are true and correct to the best of my knowledge and belief.



*James P. Leese*  
JAMES P. LEESE  
REG. LAND SURVEYOR  
N. MEX. REG. NO. 1463

319.12 ACRES, E/2 SECTION (PLAT)

**OIL CONSERVATION COMMISSION**

**AZTEC DISTRICT OFFICE**

No. Copies Received 8

**DISTRIBUTION**

	NO. FURNISHED	
Operator	<u>3</u>	
Santa Fe	<u>1</u>	
Proration Office		
State Land Office	<u>1</u>	
U. S. G. S.	<u>2</u>	
Transporter		
File	<u>1</u>	<input checked="" type="checkbox"/>