

In Lieu of
Form 3160
(June 1990)

UNITED STATES
DEPARTMENT OF INTERIOR
BUREAU OF LAND MANAGEMENT

FORM APPROVED
Budget Bureau No. 1004-0135
Expires: March 31, 1993

SUNDRY NOTICE AND REPORTS ON WELLS

Do not use this form for proposals to drill or to deepen or reentry to a different reservoir. Use "APPLICATION TO DRILL" for permit for such proposals

5. Lease Designation and Serial No.
Tribal Contract 92

6. If Indian, Allottee or Tribe Name
Jicarilla Apache

7. If Unit or CA, Agreement Designation

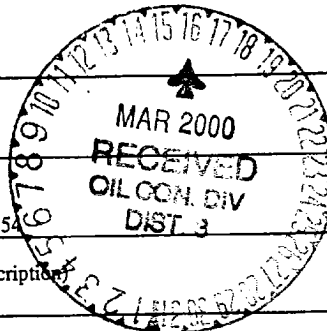
SUBMIT IN TRIPPLICATE

1. Type of Well
Oil Well Gas Well Other

2. Name of Operator
WILLIAMS PRODUCTION COMPANY

3. Address and Telephone No.
PO BOX 3102 MS 37-2, TULSA, OK 74101 (918) 573-6254

4. Location of Well (Footage, Sec., T., R., M., or Survey Description)
890' FSL& 890' FWL, SW/4 SW/4 SEC 30-27N-03W



8. Well Name and No.
Jicarilla 92 #3

9. API Well No.
30-039-20019

10. Field and Pool, or Exploratory Area
Tapacito Pictured Cliffs

11. County or Parish, State
Rio Arriba Co., NM

CHECK APPROPRIATE BOX(S) TO INDICATE NATURE OF NOTICE, REPORT, OR OTHER DATA

TYPE OF SUBMISSION	TYPE OF ACTION
Notice of Intent	<input checked="" type="checkbox"/> Abandonment
<input checked="" type="checkbox"/> Subsequent Report	Recompletion
Final Abandonment	Plugging Back
	Casing Repair
	Altering Casing
	Other _____
	Change of Plans
	New Construction
	Non-Routine Fracturing
	Water Shut-Off
	Conversion to Injection
	Dispose Water
	(Note: Report results of multiple completion on Well Completion or Recompletion Report and Log form.)

13. Describe Proposed or Completed Operations (Clearly state all pertinent details, and give pertinent dates, including estimated date of starting any proposed work. If well is directionally drilled, give subsurface locations and measured and true vertical depths for all markers and zones pertinent to this work.)*

01-10-2000 MOL, RU plugging equipment. Established injection rate into perforations with 20 bbl water at 2.5 bpm with 750 psi. Dropped 20 (1.3 s.g.) frac balls and balled off perforations. Final injection rate was 2.5 bpm with 1000 psi. Mixed 27 sx Class B cement with 2% CaCl₂ and displaced to 3462', WOC. RIH with wireline and tagged TOC at 3471'. PU and perforated casing at 3270'. Attempted to circulate hole with water but perforations are tight. Pressuring up to 2000 psi and bleeding down quickly

01-11-2000 Load bradenhead with 6 bbl water. "O" ring flange on wellhead blew out @ 150 psi, wait on welder. Weld flange halves together to eliminate water from leaking onto ground. Hook onto 2-7/8" and break down perforations with 50 bbl water @ .5 bpm with 750 psi, good returns to surface out the bradenhead. Plug #2: mixed 47 sx Class B cement and displaced with 5 bbl water when cement came to surface up bradenhead valve. Circulated cement out of wellbore. Estimate hole in 2-7/8" around 800', wait on rig

01-14-2000 Spot rig & RU. NDWH, NU BOP. Had to use cutting torch to cut off welds that were installed on wellhead on 1-11-00. Strap 1 1/4" tbg & RIH open ended. Tbg dropped in hole with 81 jts (2646'). Bottom of fish @ 3471' and top @ 835'. Called Weatherford for fishing tools and crew

CONTINUED ON BACK

14. I hereby certify that the foregoing is true and correct

Signed Tracy Ross
TRACY ROSS

Title Production Analyst Date January 25, 2000

(This space for Federal or State office use)

Approved by [Signature]

Lands and Mineral Resources

Title _____ Date MAR 6 2000

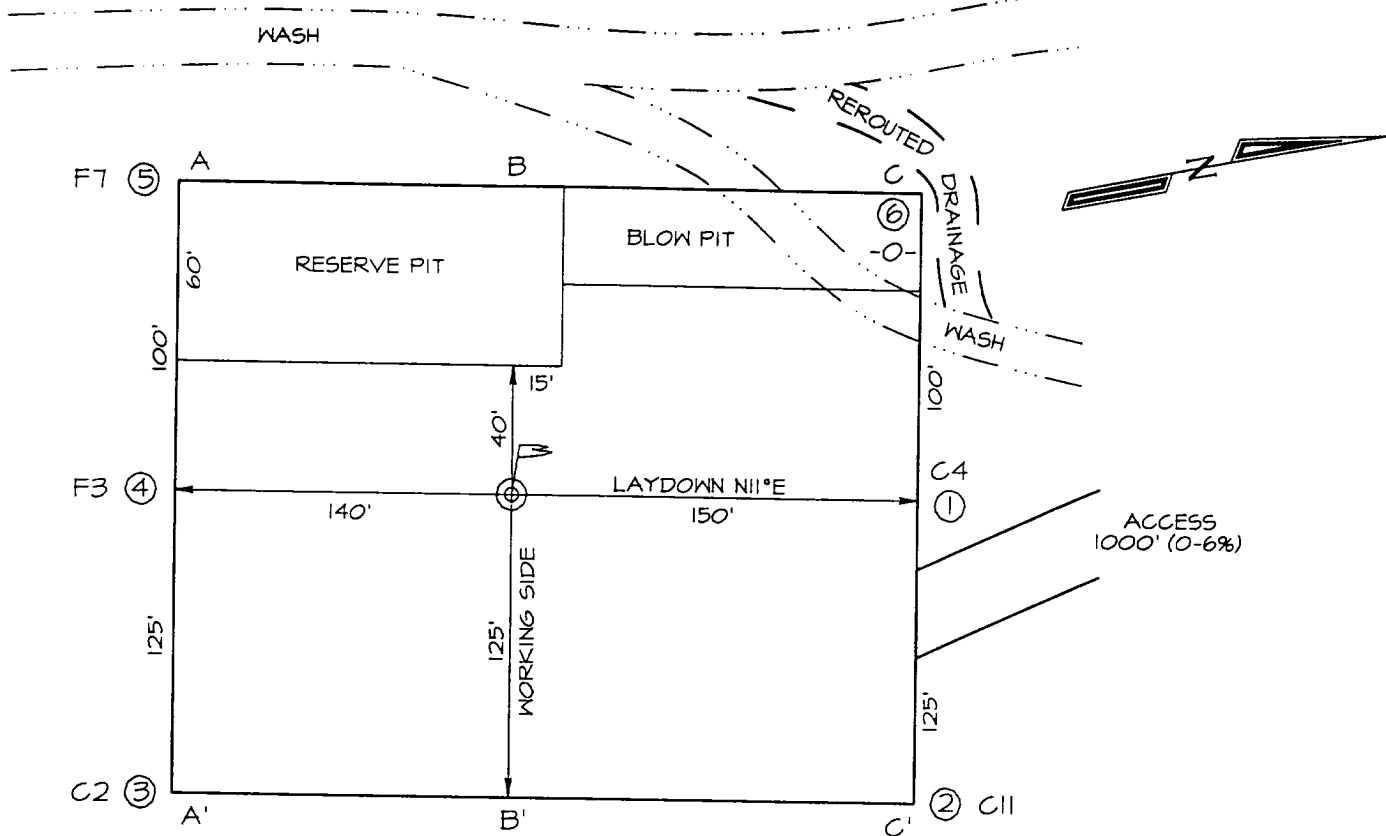
Conditions of approval, if any: Surface restoration in attached file

01-15-2000 RIH open ended with 27 jts and screw into fish. Pulled 25,000# and strapped out of hole. All jts were returned, 5 jts damaged. Plug #2 (Ojo Alamo, 2890' - 3339'), BLM approved change in procedure. Circulate hole clean with water. Balance B cement plug inside csg. POOH and WOC

01-17-2000 RIH, tagged TOC @ 2790'. PUH & perforated squeeze holes @ 1825'. Establish injection rate @ 3 bpm with 50C mixed 47 sx CI B cement with 3% CaCl and displaced to 1825', WOC. RIH and tagged TOC @ 1220', PUH and perforated eq @ 175'. Established circulation to surface with water. Plug #4, mixed 72 sx CI B cement to circulate good cement to surface. and cut off wellhead, installed dry hole marker. RD rig & MOL

CONOCO, INC. TRIBE FEDERAL #2B
1875' FNL, 660' FEL, SECTION 33, T30N, R10W, NMPM
SAN JUAN COUNTY, NEW MEXICO
GROUND ELEVATION: 6067'

LATITUDE: 36°46'15"
LONGITUDE: 107°52'59"



A-A'						
6077'						
6067'						
6057'						

B-B'						
6077'						
6067'						
6057'						

C-C'						
6077'						
6067'						
6057'						



United States Department of the Interior

BUREAU OF LAND MANAGEMENT

Albuquerque Field Office
435 Montañito Rd. NW
Albuquerque, New Mexico 87107- 4935
www.nm.blm.gov



IN REPLY REFER TO:

3162.3-4 (017)
Jicarilla Contract 92
#3

DEC 23 1995

Williams Production Company
PO Box 3102 MS 37-2
Tulsa, Oklahoma 74101

Attention: Tracy Ross

Dear Operator

The following conditions of approval must be complied with (as applicable) before the Jicarilla Contract 92, #3 well, located 890' FSL and 890' FWL, Section 30, T. 27 N., R. 3 W. can be approved for final abandonment.

1. All fences, production equipment, purchaser's equipment, concrete slabs, deadman (anchors), flowlines, risers, debris and trash must be removed from the location.
2. Any oily soil or fluids must be properly disposed of in an approved disposal area.
3. Pits must be filled in and the edges of the pads shaped to conform to the natural terrain.
4. Pads must be leveled, dressed up by a maintainer, ripped and disked.
5. Access roads must be leveled, waterbarred, disked and blocked off with earthen berms at the at the junction with the main road and at the entrance to the well pad. Waterbars should be spaced as shown below.

% Slope	Spacing Interval
Less than 2%	200'
2 to 5%	150'
6 to 9%	100'
10 to 15%	50'
Greater than 15%	30'

All waterbars should divert water to the downhill side of the road.

6. All disturbed areas will be seeded with the prescribed seed mix (Reseeding may be required). Reseeding should be done using pounds pure-live seed per acre. To avoid the introduction of noxious weeds, only certified seed should be used. The following seed mix was recommended in the original Application for Permit to Drill.

- Crested Wheat 2
- Needle and Thread Grass 1
- Galleta Grass 2
- Indian Rice Grass 2
- Western Wheatgrass 2

After one growing season, notify us by Sundry Notice of Final Abandonment. We will schedule an inspection to check the well site and surface restoration. Final approval for surface restoration will be given in concurrence with the BIA, Jicarilla Agency, Real Property. If you have any questions, please contact me at (505) 761-8786.

Patricia M. Hester

Surface Protection/Geologist

cc: Harold TeCube, Real Property BIA

