

UNITED STATES
DEPARTMENT OF THE INTERIOR
GEOLOGICAL SURVEY

APPLICATION FOR PERMIT TO DRILL, DEEPEN, OR PLUG BACK

1a. TYPE OF WORK

DRILL ☒DEEPEN ☐PLUG BACK ☐

b. TYPE OF WELL

OIL
WELL ☐GAS
WELL ☒OTHER ☐SINGLE
ZONE ☐MULTIPLE
ZONE ☐

c. NAME OF OPERATOR

Aztec Oil and Gas Company

d. ADDRESS OF OPERATOR

Drawer 570, Farmington, New Mexico

e. LOCATION OF WELL (Report location clearly and in accordance with any State requirements.)

At surface

1190 FNL & 1490 FEL, Section 12-27N-4W

At proposed prod. zone

f. DISTANCE IN MILES AND DIRECTION FROM NEAREST TOWN OR POST OFFICE*

g. DISTANCE FROM PROPOSED*
LOCATION TO NEAREST
PROPERTY OR LEASE LINE, FT.
(Also to nearest drlg. unit line, if any)

h. NO. OF ACRES IN LEASE

i. NO. OF ACRES ASSIGNED
TO THIS WELLj. DISTANCE FROM PROPOSED LOCATION*
TO NEAREST WELL, DRILLING, COMPLETED,
OR APPLIED FOR, ON THIS LEASE, FT.

k. PROPOSED DEPTH

l. ROTARY OR CABLE TOOLS

m. ELEVATIONS (Show whether DF, RT, GR, etc.)

6830 Gr

n. APPROX. DATE WORK WILL START*

o.

PROPOSED CASING AND CEMENTING PROGRAM

SIZE OF HOLE	SIZE OF CASING	WEIGHT PER FOOT	SETTING DEPTH	QUANTITY OF CEMENT
15"	10-3/4"	36#	300'	150 sx
9-7/8"	7-5/8"	26.4#	3800'	300 sx
6-3/4"	4-1/2"	11.6 & 10.5#	8060'	600 sx

PROPOSE TO:

Drill 15" surface hole, Ran 10-3/4" pipe set at approx. 300' cmt w/150 sx.
Drill 9-7/8" hole to approx. 3800'. Ran 7-5/8" intermediate cmt w/300 sx.
Drill 6-3/4" hole to approx. TD 8060', Ran 4 1/2" liner to approx. 3800' to 8060
cmt w/600 sx.
Ran ES Induction.
Perforate & Frace Dakota Zone.

PRORATION UNIT: N/2 Section 12-27N-4W 320 Acres

IN ABOVE SPACE DESCRIBE PROPOSED PROGRAM: If proposal is to deepen or plug back, give data on present productive zone and proposed new productive zone. If proposal is to drill or deepen directionally, give pertinent data on subsurface locations and measured and true vertical depths. Give blowout preventer program, if any.

24.

SIGNED

TITLE District Superintendent

DATE December 1, 1969

(This space for Federal or State office use)

APPROVED

APPROVED BY
CONDITIONS OF APPROVAL, IF ANY:JERRY W. LONG
DISTRICT ENGINEER

APPROVAL DATE

TITLE

RECEIVED
DEC 3 1969

*See Instructions On Reverse Side

U. S. GEOLOGICAL SURVEY
DURANGO, COLO.

APPROVED SUBJECT TO COMPLIANCE WITH FOREST SERVICE STIPULATIONS.

**NEW MEXICO OIL CONSERVATION COMMISSION
WELL LOCATION AND ACREAGE DEDICATION PLAT**

Form C-102
Supersedes C-128
Effective 1-1-65

All distances must be from the outer boundaries of the Section.

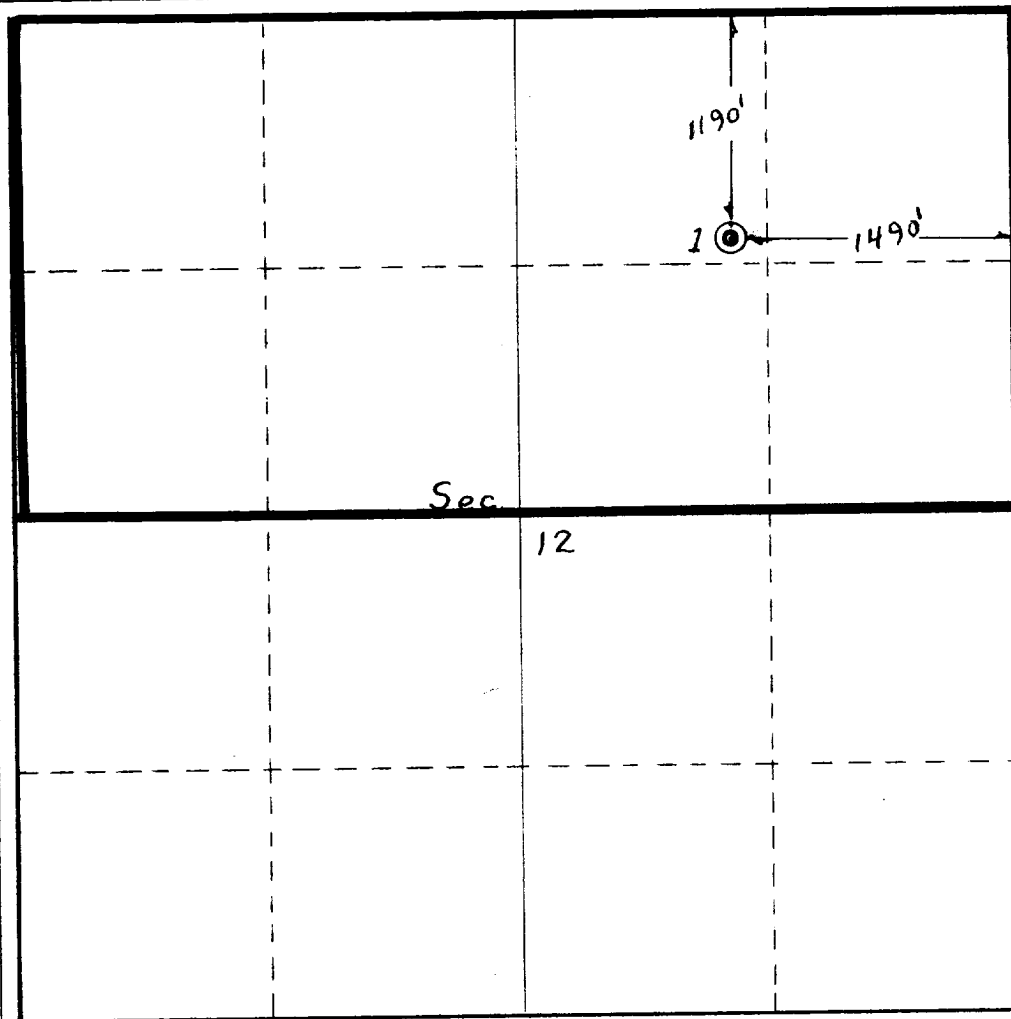
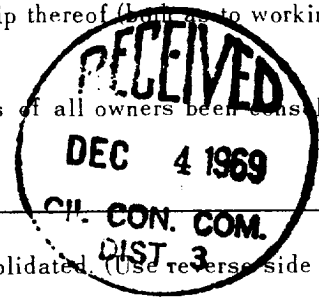
Operator Astec Oil & Gas Company			Lease Companero		Well No. 1
Unit Letter B	Section 12	Township 27N	Range 4W	County Rio Arriba County	
Actual Footage Location of Well: 1190 feet from the North line and 1490 feet from the East line					
Ground Level Elev. 6830	Producing Formation Dakota	Pool Basin Dakota		Dedicated Acreage: 320 Acres	

1. Outline the acreage dedicated to the subject well by colored pencil or hachure marks on the plat below.
2. If more than one lease is dedicated to the well, outline each and identify the ownership thereof (limiting to working interest and royalty).
3. If more than one lease of different ownership is dedicated to the well, have the interests of all owners been consolidated by communitization, unitization, force-pooling, etc?

☐ Yes ☐ No If answer is "yes," type of consolidation _____

If answer is "no," list the owners and tract descriptions which have actually been consolidated (Use reverse side of this form if necessary.) _____

No allowable will be assigned to the well until all interests have been consolidated (by communitization, unitization, forced-pooling, or otherwise) or until a non-standard unit, eliminating such interests, has been approved by the Commission.



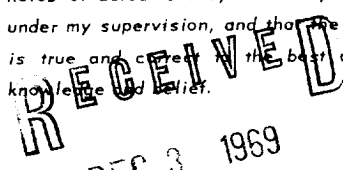
CERTIFICATION

I hereby certify that the information contained herein is true and complete to the best of my knowledge and belief.

ORIGINAL SIGNED BY JOE C. SALMON

Name _____
 Position Joe C. Salmon
 Company District Superintendent
 Date Astec Oil and Gas Company
November 25, 1969

I hereby certify that the well location shown on this plat was plotted from field notes of actual surveys made by me or under my supervision, and that the same is true and correct to the best of my knowledge and belief.



Date Surveyed October 28, 1969
 Registered Joe C. Salmon
 Signature Joe C. Salmon
 Title District Superintendent

