

State of New Mexico
Energy, Minerals and Natural Resources Department
Oil Conservation Division

Sundry Notices and Reports on Wells

1. Type of Well
GAS

2. Name of Operator
MERIDIAN OIL

3. Address & Phone No. of Operator
PO Box 4289, Farmington, NM 87499 (505) 326-9700

4. Location of Well, Footage, Sec., T, R, M
890' FSL, 840' FWL, Sec.36, T-27-N, R-5-W, NMPM, Rio Arriba County

API # (assigned by OCD)
30-039-20462

5. Lease Number

6. State Oil&Gas Lease #
E-290-32

7. Lease Name/Unit Name

San Juan 27-5 Unit

8. Well No.

146

9. Pool Name or Wildcat
Blanco Mesaverde/
Basin Dakota

10. Elevation: 7250 GR

Type of Submission

☒ Notice of Intent

☐ Subsequent Report

☐ Final Abandonment

Type of Action

☐ Abandonment

☒ Recompletion

☐ Plugging Back

☐ Casing Repair

☐ Altering Casing

☐ Other -

☐ Change of Plans

☐ New Construction

☐ Non-Routine Fracturing

☐ Water Shut off

☐ Conversion to Injection

13. Describe Proposed or Completed Operations

It is intended to add the Mesaverde formation to the subject well according to the following procedure:

TOOH with Dakota tubing. Set bridge plug above the Dakota perforations. Perforate and fracture treat the Point Lookout interval of the Mesaverde. Set a retrievable bridge plug above the Point Lookout perforations. Perforate and fracture treat the Cliff House and Menefee intervals in one stage. Clean out all intervals and test potential. Run tubing. Return the well to production as a Mesaverde/Dakota commingle. Application for a down-hole commingling order will be applied for.

RECEIVED
FEB 12 1996

OIL CON. DIV.
DIST. 3

SIGNATURE *[Signature]* (LLL9) Regulatory Administrator February 7, 1996

(This space for State Use)

Approved by *Ernie Busch* Title DEPUTY OIL & GAS INSPECTOR, DIST. #3 Date FEB 12 1996

Held C-104 by DHC order & well # chg to #189

District I
PO Box 1988, Hobbs, NM 88241-1988
District II
PO Drawer DD, Artesia, NM 88211-0719
District III
1000 Rio Brazos Rd., Aztec, NM 87410
District IV
PO Box 2088, Santa Fe, NM 87504-2088

State of New Mexico
Energy, Minerals & Natural Resources Department

OIL CONSERVATION DIVISION
PO Box 2088
Santa Fe, NM 87504-2088

Form C-
Revised February 21, 1
Instructions on b
Submit to Appropriate District Of
State Lease - 4 Co
Fee Lease - 3 Co

☐ AMENDED REPC

WELL LOCATION AND ACREAGE DEDICATION PLAT

1 API Number 30-039-20462		2 Pool Code 72319/71599		3 Pool Name Blanco Mesaverde/Basin Dakota		
4 Property Code 7454		5 Property Name San Juan 27-5 Unit			6 Well Number 146	
7 OGRID No. 14538		8 Operator Name MERIDIAN OIL, INC.			9 Elevation 7250'	

10 Surface Location

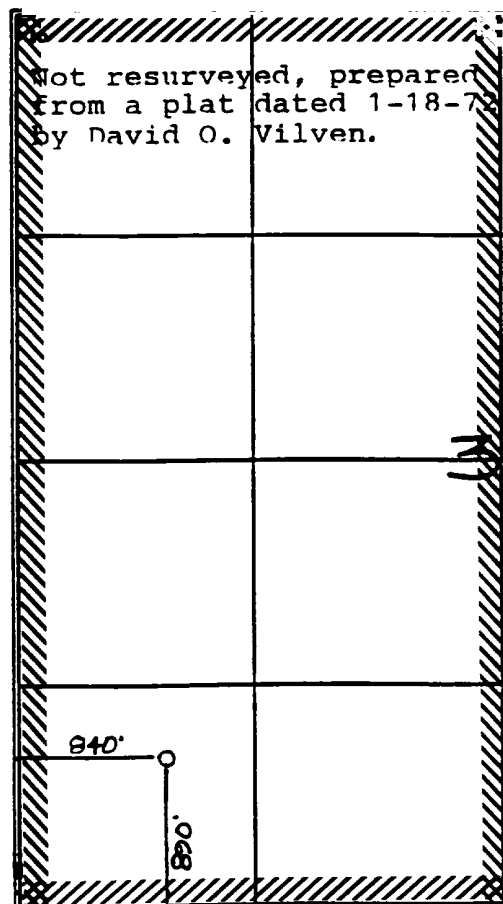
UL or lot no. M	Section 36	Township 27 N	Range 5 W	Lot Idn	Feet from the 890	North/South line South	Feet from the 840	East/West line West	County R.A.
--------------------	---------------	------------------	--------------	---------	----------------------	---------------------------	----------------------	------------------------	----------------

11 Bottom Hole Location If Different From Surface

UL or lot no.	Section	Township	Range	Lot Idn	Feet from the	North/South line	Feet from the	East/West line	County
---------------	---------	----------	-------	---------	---------------	------------------	---------------	----------------	--------

12 Dedicated Acres w/320-W/320	13 Joint or Infill	14 Consolidation Code	15 Order No.
-----------------------------------	--------------------	-----------------------	--------------

NO ALLOWABLE WILL BE ASSIGNED TO THIS COMPLETION UNTIL ALL INTERESTS HAVE BEEN CONSOLIDATE
OR A NON-STANDARD UNIT HAS BEEN APPROVED BY THE DIVISION



RECEIVED
FEB 12 1996
OIL CON. DIV.
DIST. 3

17 OPERATOR CERTIFICATION

I hereby certify that the information contained herein
true and complete to the best of my knowledge and be

Signature
Peggy Bradfield
Printed Name
Regulatory Administrator
Title
2-7-96
Date

18 SURVEYOR CERTIFICATION

I hereby certify that the well location shown on this p
was plotted from field notes of actual surveys made b
or under my supervision, and that the same is true an
correct to the best of my belief.

2-6-96
Date of Survey
Signature and Seal of Professional Surveyor:

Certificate Num: 750 14538 30462

San Juan 27-5 Unit #146
Unit M, Sec 36, T-27-N, R-5-W

Location: 890' FSL, 840' FWL
Rio Arriba County, NM

Latitude: 36-31-31
Longitude: 107-18-55

Current Field: Basin Dakota
Spud: 3/22/72
Elev GL: 7250'
TD: 8469'

Completed: 5/15/72
Elev KB:
PBTD: 8462'

CASING RECORD:

<u>Hole Size</u>	<u>Casing Size</u>	<u>Weight</u>	<u>Grade</u>	<u>Depth Set</u>	<u>Cmt Vol</u>	<u>Cmt Top</u>
13-3/4"	9-5/8"	32.3#	H-40	209'	225 cu ft	Surf
8-3/4"	7"	20#	K-55	4330'	243 cu ft	3395'
6-1/4"	4-1/2"	11.6# & 10.5#	N-80, KS, K-55	8469'	648 cu ft	3700'

LINER RECORD:

<u>Hole Size</u>	<u>Casing Size</u>	<u>Weight</u>	<u>Grade</u>	<u>Depth Set</u>	<u>Cmt Vol</u>	<u>Cmt Top</u>
------------------	--------------------	---------------	--------------	------------------	----------------	----------------

TUBING RECORD:

<u>Tubing Size</u>	<u>Weight</u>	<u>Grade</u>	<u>Depth Set</u>	<u>Joints</u>	<u>Other</u>	<u>Depth</u>
1-1/2"	2.9#	J-55	8400'	260		

SN - 1 joint off bottom

FORMATION TOPS:

Ojo Alamo	Cliffhouse	5675'
Kirtland	Menefee	
Fruitland	Pt Lookout	6183'
Pictured Cliffs	Gallup	7319'
Lewis	Dakota	8300'

Logs Run: Ind-GR, Comp Dens, Temp, CBL

Completions: Dakota
8200-08, 8244-52, 8332-40,
8380-88, 8408-16 (16 spz)
60,000# sand and 59,700 gal
water

Workover History:

SAN JUAN 27-5 UNIT #146

Unit M, Section 36, T-27-N, R-5-W
Lat. 36-31-31, Long. 107-18-55

CURRENT WELLBORE SCHEMATIC

