

UNITED STATES  
DEPARTMENT OF THE INTERIOR  
GEOLOGICAL SURVEY

30-039 20467

APPLICATION FOR PERMIT TO DRILL, DEEPEN, OR PLUG BACK

1a. TYPE OF WORK  
DRILL ☒ DEEPEN ☐ PLUG BACK ☐

b. TYPE OF WELL  
OIL WELL ☐ GAS WELL ☒ OTHER ☐  
SINGLE ZONE ☒ MULTIPLE ZONE ☐

2. NAME OF OPERATOR  
El Paso Natural Gas Company

3. ADDRESS OF OPERATOR  
PO Box 990, Farmington, NM 87401

4. LOCATION OF WELL (Report location clearly and in accordance with any State requirements.)\*  
At surface  
1650'S, 1840'W  
At proposed prod. zone

14. DISTANCE IN MILES AND DIRECTION FROM NEAREST TOWN OR POST OFFICE\*

15. DISTANCE FROM PROPOSED\*  
LOCATION TO NEAREST  
PROPERTY OR LEASE LINE, FT.  
(Also to nearest drlg. unit line, if any)

18. DISTANCE FROM PROPOSED LOCATION\*  
TO NEAREST WELL, DRILLING, COMPLETED,  
OR APPLIED FOR, ON THIS LEASE, FT.

21. ELEVATIONS (Show whether DF, RT, GR, etc.)  
6607'GL

23. PROPOSED CASING AND CEMENTING PROGRAM

SIZE OF HOLE	SIZE OF CASING	WEIGHT PER FOOT	SETTING DEPTH	QUANTITY OF CEMENT
13 3/4"	9 5/8"	32.3#	200'	225 cu.ft. to circulate
8 3/4"	7"	20.0#	3500	220 cu.ft. to cover Ojo Alamo
6 1/4"	4 1/2"	10.5&11.6#	7800'	640 cu.ft. to fill to 3500'.

Selectively perforate and sandwater fracture the Dakota formation.

The S/2 of Section 35 is dedicated to this well.



RECEIVED

JAN 21 1972

U. S. GEOLOGICAL SURVEY  
DURANGO, COLO.

IN ABOVE SPACE DESCRIBE PROPOSED PROGRAM: If proposal is to deepen or plug back, give data on present productive zone and proposed new productive zone. If proposal is to drill or deepen directionally, give pertinent data on subsurface locations and measured and true vertical depths. Give blowout preventer program, if any.

24.

SIGNED Original Signed F. H. WOOD TITLE Petroleum Engineer DATE January 20, 1972

(This space for Federal or State office use)

PERMIT NO. APPROVAL DATE

APPROVED BY TITLE DATE

CONDITIONS OF APPROVAL, IF ANY:

\*See Instructions On Reverse Side

NEW MEXICO OIL CONSERVATION COMMISSION  
WELL LOCATION AND ACREAGE DEDICATION PLAT

Form 1-1  
Supersedes C-12P  
Effective 10-1-68

All distances must be from the outer boundaries of the well.

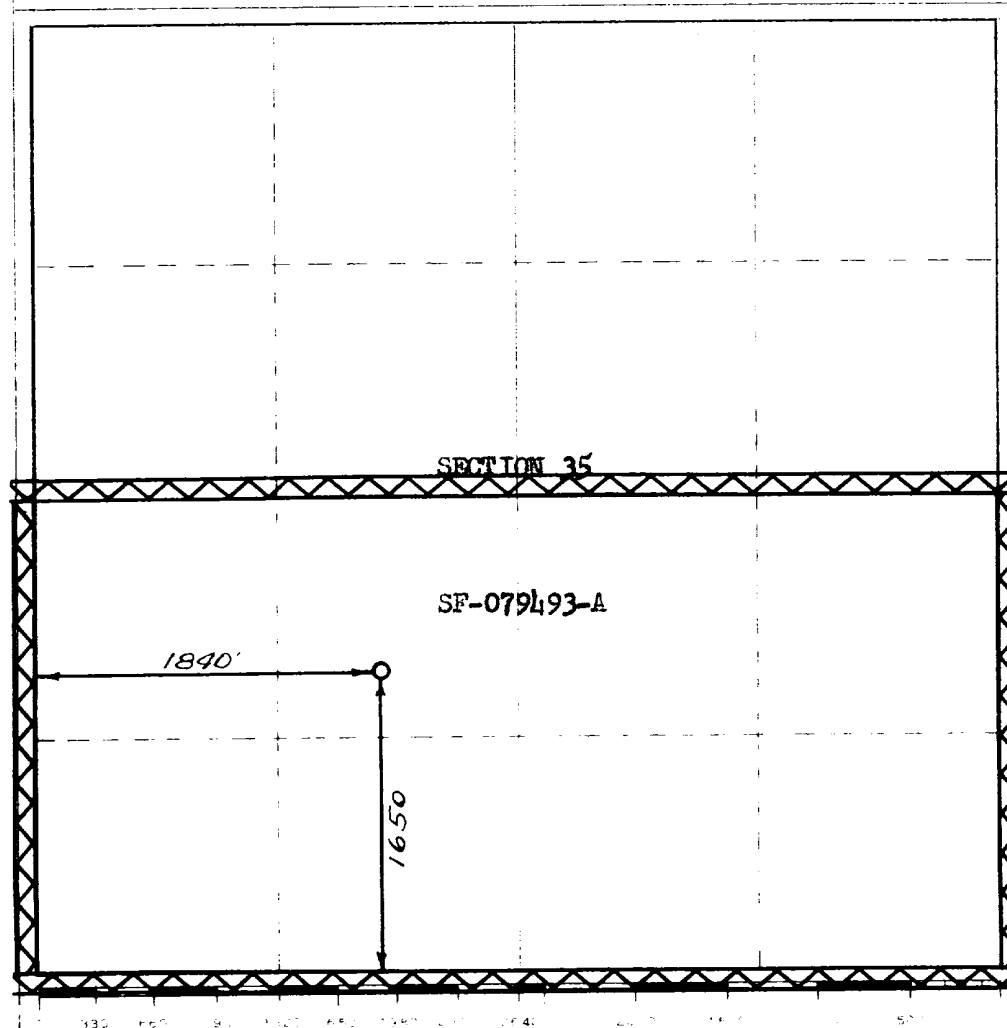
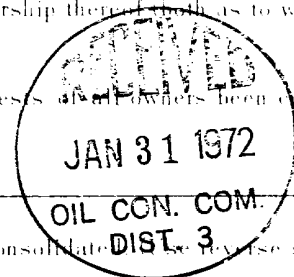
EL PASO NATURAL GAS COMPANY		SAN JUAN 27-5 UNIT (SF-079493-A)		144
K	35	27-N	5-W	RIO ARriba
1650	SOUTH	1840	WEST	
6607	DAKOTA	BASIN DAKOTA	320.00	

1. Outline the acreage dedicated to the subject well by colored pencil or hatchure marks on the plat below.
2. If more than one lease is dedicated to the well, outline each and identify the ownership thereof (both as to working interest and royalty).
3. If more than one lease of different ownership is dedicated to the well, have the interests of all owners been consolidated by communitization, unitization, force-pooling, etc?

☒ Yes ☐ No If answer is "yes," type of consolidation Unitization

If answer is "no," list the owners and tract descriptions which have actually been consolidated (by communitization, unitization, forced-pooling, or otherwise) or until a non-standard unit, eliminating such interests, has been approved by the Commission.

No allowable will be assigned to the well until all interests have been consolidated (by communitization, unitization, forced-pooling, or otherwise) or until a non-standard unit, eliminating such interests, has been approved by the Commission.



CERTIFICATION

I hereby certify that the information contained herein is true and complete to the best of my knowledge and belief.

Original Signed F. H. WOOD

Petroleum Engineer

El Paso Natural Gas Co.

January 20, 1972

I hereby certify that the well location shown on this plat was plotted from field notes of actual surveys made by me or under my supervision, and that the same is true and correct to the best of my knowledge and belief.

JANUARY 10, 1972

*Paul O'Brien*  
1760