

UNITED STATES  
DEPARTMENT OF THE INTERIOR  
GEOLOGICAL SURVEY

30-039-20663

## APPLICATION FOR PERMIT TO DRILL, DEEPEN, OR PLUG BACK

## 1a. TYPE OF WORK

DRILL ☒DEEPEN ☐PLUG BACK ☐

## b. TYPE OF WELL

OIL  
WELL ☐GAS  
WELL ☒

OTHER

SINGLE  
ZONE ☒MULTIPLE  
ZONE ☐

## 2. NAME OF OPERATOR

El Paso Natural Gas Company

## 3. ADDRESS OF OPERATOR

PO Box 990, Farmington, NM 87401

## 4. LOCATION OF WELL (Report location clearly and in accordance with any State requirements.)\*

At surface

900'S, 840'W

At proposed prod. zone

## 14. DISTANCE IN MILES AND DIRECTION FROM NEAREST TOWN OR POST OFFICE\*

## 15. DISTANCE FROM PROPOSED\*

LOCATION TO NEAREST  
PROPERTY OR LEASE LINE, FT.  
(Also to nearest drlg. unit line, if any)

## 16. NO. OF ACRES IN LEASE

17. NO. OF ACRES ASSIGNED  
TO THIS WELL

320 ✓

18. DISTANCE FROM PROPOSED LOCATION\*  
TO NEAREST WELL, DRILLING, COMPLETED,  
OR APPLIED FOR, ON THIS LEASE, FT.

## 19. PROPOSED DEPTH

7622'

## 20. ROTARY OR CABLE TOOLS

Rotary

## 21. ELEVATIONS (Show whether DF, RT, GR, etc.)

6486'GR

## 22. APPROX. DATE WORK WILL START\*

## 23.

## PROPOSED CASING AND CEMENTING PROGRAM

SIZE OF HOLE	SIZE OF CASING	WEIGHT PER FOOT	SETTING DEPTH	QUANTITY OF CEMENT
13 3/4"	9 5/8"	32.3#	200'	220 cu. ft. to circulate to surf.
8 3/4"	7"	20#	3450'	189 cu. ft. to cover Ojo Alamo
6 1/4"	4 1/2"	10.5#&11.6#	7622'	642 cu. ft. to fill to int. casing

Selectively perforate and sandwater fracture the Dakota formation.

The S/2 of Section 33 is dedicated to this well.



IN ABOVE SPACE DESCRIBE PROPOSED PROGRAM: If proposal is to deepen or plug back, give data on present productive zone and proposed new productive zone. If proposal is to drill or deepen directionally, give pertinent data on subsurface locations and measured and true vertical depths. Give blowout preventer program, if any.

## 24.

SIGNED

*D. G. Biscoe*

TITLE

Drilling Clerk

DATE

June 12, 1973

(This space for Federal or State office use)

PERMIT NO.

APPROVAL DATE

APPROVED BY

CONDITIONS OF APPROVAL, IF ANY:

*OK*

TITLE

DATE

\*See Instructions On Reverse Side

NEW MEXICO OIL CONSERVATION COMMISSION  
WELL LOCATION AND ACREAGE DEDICATION PLAT

Form O-112  
Supersedes C-123  
Effective 1-1-61

All distances must be from the outer boundaries of the Section

EL PASO NATURAL GAS COMPANY		SAN JUAN 27-5 UNIT (SF-079394)		169
Tract Letter <b>M</b>	Section <b>33</b>	Township <b>27-N</b>	Range <b>5-W</b>	County <b>RIO ARriba</b>
Acreage: 900 feet from the <b>SOUTH</b> line and 840 feet from the <b>WEST</b> line				
Iron Pipe Elev. <b>6486</b>	Forming Formation <b>DAKOTA</b>	Pool <b>BASIN DAKOTA</b>	Iron Pipe Elev. <b>320.00</b> Acres	

1. Outline the acreage dedicated to the subject well by colored pencil or hatchure marks on the plat as by:
2. If more than one lease is dedicated to the well, outline each and identify the ownership thereof (both as to working interest and royalty).
3. If more than one lease of different ownership is dedicated to the well, have the interests of all owners been consolidated by communitization, unitization, force-pooling, etc?

☒ Yes ☐ No If answer is "yes," type of consolidation Unitization

If answer is "no," list the owners and tract descriptions which have actually been consolidated. (Use reverse side of this form if necessary.)

No allowable will be assigned to the well until all interests have been consolidated (by communitization, unitization, forced-pooling, or otherwise) or until a non-standard unit, eliminating such interests, has been approved by the Commission.

CERTIFICATION

I hereby certify that the information contained herein is true and complete to the best of my knowledge and belief.  
Original Signed by  
**D. G. Brisco**

My title  
**Drilling Clerk**

Position  
**El Paso Natural Gas Company**

Company  
**June 12, 1973**

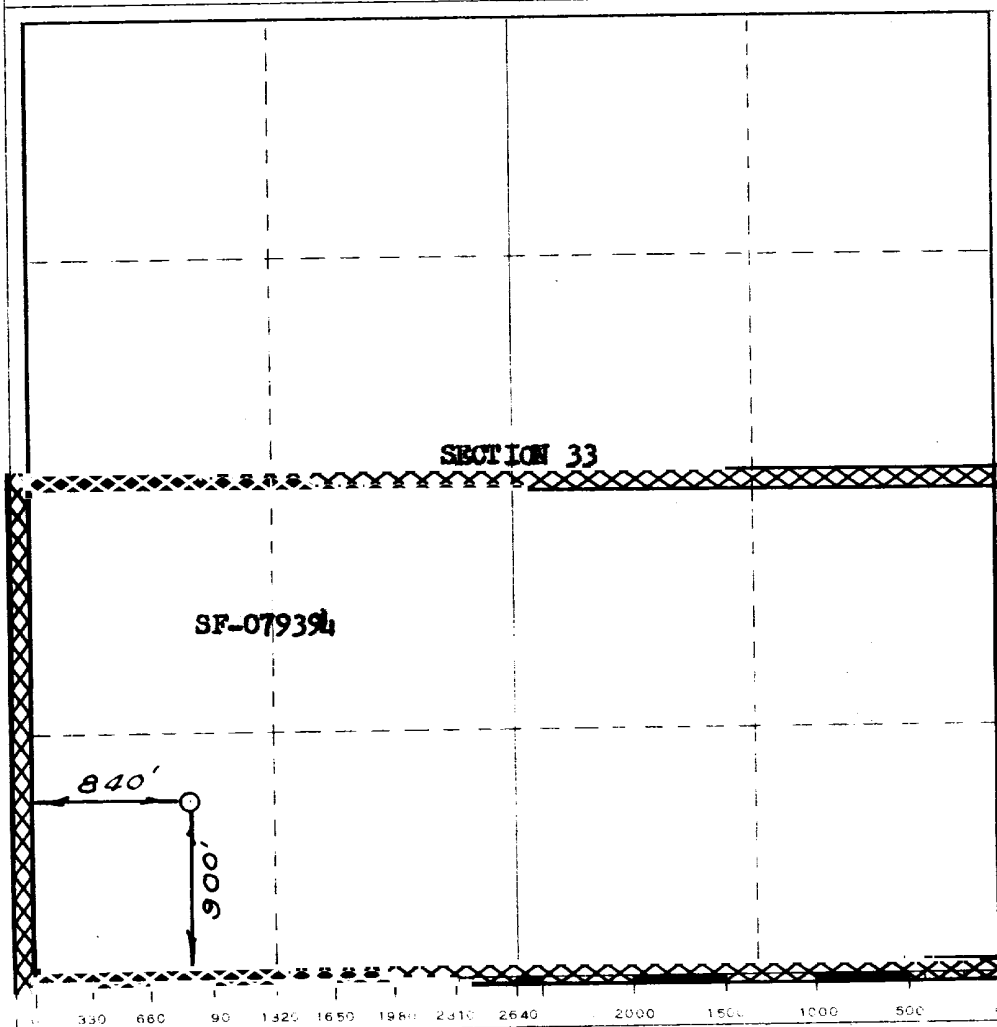
Date

I hereby certify that the well location shown on this plat was plotted from field notes of actual surveys made by me or under my supervision, and that the same is true and correct to the best of my knowledge and belief.

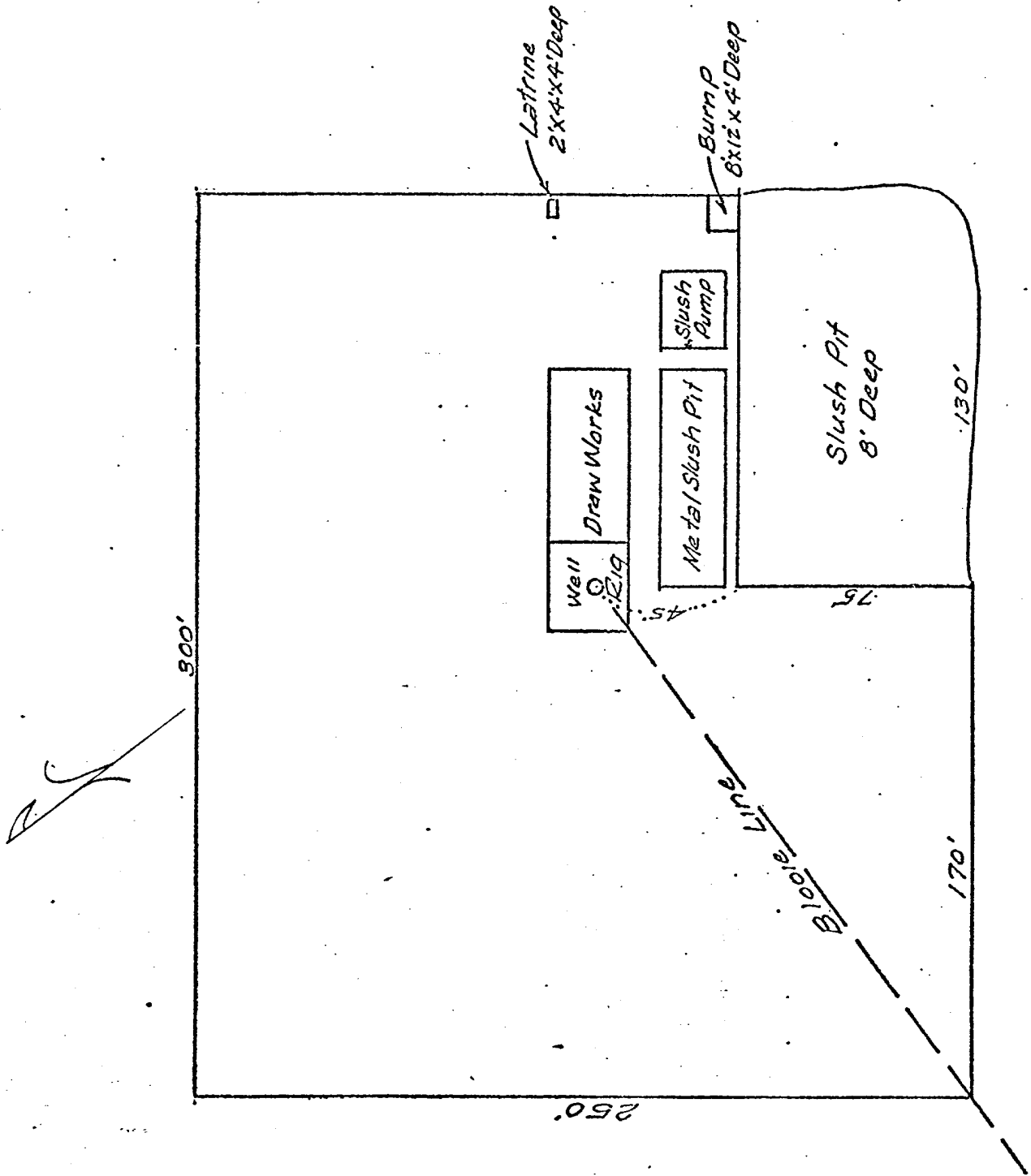
**JUNE 1, 1973**

Registered Professional Surveyor  
and State Commissioner

*David M. Wilson*  
1760

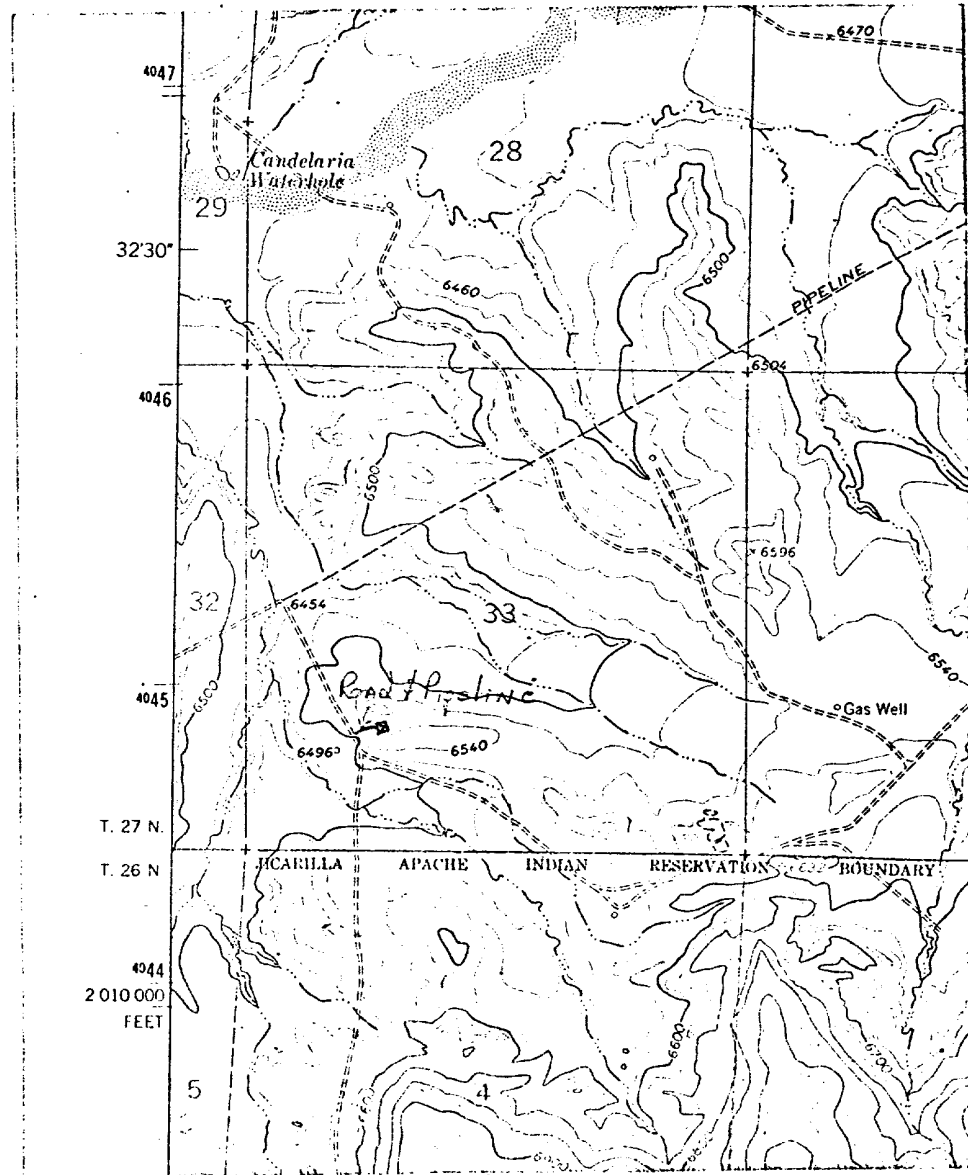


SAN LUAN 27-5 Unit No. 169



SAN JUAN 27-5 UNIT No. 169

SW/4 Sec. 33, T-27N, R-5W



T  
27  
N

T  
26

R-5-W