

submitted in lieu of Form 3160-5

UNITED STATES
DEPARTMENT OF THE INTERIOR
BUREAU OF LAND MANAGEMENT

Sundry Notices and Reports on Wells

1. Type of Well
GAS

2. Name of Operator

**BURLINGTON
RESOURCES**

OIL & GAS COMPANY

3. Address & Phone No. of Operator

PO Box 4289, Farmington, NM 87499 (505) 326-9700

4. Location of Well, Footage, Sec., T, R, M

1838' FNL, 1765' FWL, Sec. 27, T-27-N, R-4-W, NMPM

5. Lease Number
SF-080675

6. If Indian, All. or
Tribe Name

7. Unit Agreement Name

San Juan 27-4 Unit

8. Well Name & Number
San Juan 27-4 U #63

9. API Well No.
30-039-20731

10. Field and Pool
Tapacito Pict Cliffs

11. County and State
Rio Arriba Co, NM

12. CHECK APPROPRIATE BOX TO INDICATE NATURE OF NOTICE, REPORT, OTHER DATA

Type of Submission

☒ Notice of Intent
☐ Subsequent Report
☐ Final Abandonment

Type of Action

☒ Abandonment
☐ Recompletion
☐ Plugging Back
☐ Casing Repair
☐ Altering Casing
☐ Other -
☐ Change of Plans
☐ New Construction
☐ Non-Routine Fracturing
☐ Water Shut off
☐ Conversion to Injection

13. Describe Proposed or Completed Operations

It is intended to plug and abandon the subject well according to the attached procedure and wellbore diagram.



14. I hereby certify that the foregoing is true and correct.

Signed Nancy Ottmann for (TF3) Title Regulatory Supervisor Date 6/7/01
no

(This space for Federal or State Office use)

APPROVED BY _____ Title _____ Date 6/28/01

CONDITION OF APPROVAL, if any:

Title 18 U.S.C. Section 1001, makes it a crime for any person knowingly and willfully to make any department or agency of the United States any false, fictitious or fraudulent statements or representations as to any matter within its jurisdiction.

NMOCD

PLUG AND ABANDONMENT PROCEDURE

06/02/01

San Juan 27-4 Unit #63

Tapacito Pictured Cliffs

AIN #4390501

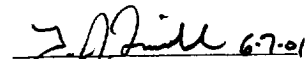
1838' FNL & 1765' FWL, Section 27, T27N, R4W
Rio Arriba County, New Mexico API #30-039-20731

Lat: 36 - 32.7798' / Long: -107 - 14.436'

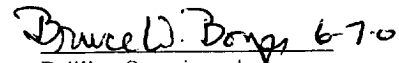
Note: All cement volumes use 100% excess outside pipe and 50' excess inside pipe. The stabilizing wellbore fluid will be 8.3 ppg, sufficient to balance all exposed formation pressures. All cement will be ASTM Type II, mixed at 15.6 ppg with a 1.18 cf/sx yield.

1. Install and/or test rig anchors. Prepare blow pit. Comply with all NMOCD, BLM and Burlington safety rules and regulations. ND wellhead and NU BOP, test BOP.
2. Prepare and tally 1-1/4" tubing workstring. Round-trip 2-7/8" casing scraper or a 1-1/4" EUE saw tooth collar to 4052'. May need to circulate with a power swivel at 260'.
3. **Plug #1 (Pictured Cliffs perforations and Fruitland, Kirtland and Ojo Alamo tops, 4052' - 3580'):** Set 2-7/8" wireline CIBP at 4052'. TIH with open ended tubing and tag CIBP. Load casing with water and circulate well clean. Pressure test casing to 500#. If casing does not test, then spot or tag subsequent plugs as necessary. Mix 20 sxs cement (two 10 sx stages) and spot a balanced plug inside casing above the CIBP to isolate the Pictured Cliffs perforations and to cover though Fruitland, Kirtland and Ojo Alamo tops. TOH with tubing.
4. **Plug #2 (Nacimiento top, 2580' - 2480'):** Perforate 3 bi-wire squeeze holes at 2580'. Set 2-7/8" wireline cement retainer at 2530'. Establish rate into squeeze holes. Mix 45 sxs cement, squeeze 40 sxs cement outside 2-7/8" casing and leave 5 sxs cement inside casing to cover Nacimiento top. TOH and LD tubing.
5. **Plug #3 (8-5/8" Surface casing, 192' - surface):** Perform a pump around test with one bbl of weak cement slurry to determine the depth of the casing leak. If necessary, perforate 3 HSC squeeze holes at 192'. Establish circulation out the bradenhead valve. Mix and pump approximately 60 sxs cement down 2-7/8" casing to circulate good cement out bradenhead valve. Shut well in and WOC.
6. ND BOP and cut off casing below surface. Install P&A marker with cement to comply with regulations. RD, move off location, cut off anchors and restore location.

Recommended:


Operations Engineer

Approved:

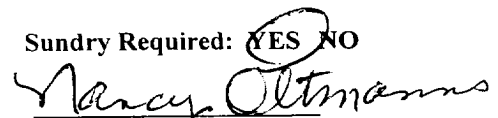

Drilling Superintendent

Tim Friesenhahn

Office - (326-9539)
Pager - (326-8113)

Sundry Required: ☒ YES ☐ NO

Approved:


Regulatory
Procedure due to BLM 6/15/01

Lease Operator: Rob Gay
Specialist: Richard Lopez
Foreman: Ward Arnold

Cell: 320-1200 Pager: 326-8837
Cell: 320-6573 Pager: 326-8681
Cell: 320-1689 Pager: 326-8303

San Juan 27-4 Unit #63

Current

AIN #4390501

Tapacito Pictured Cliffs

NW, Section 27, T-27-N, R-4-W, Rio Arriba County, NM

API # 30-039-20731

Lat:36 - 32.7798' Long: -107 - 14.436'

Today's Date: 06/01/01

Spud: 12/14/73

Completed: 5/16/74

Elevation: 7224'

12-1/4" hole

8-5/8" 24#, J-55 Casing set @ 142'
Cemented with 118 cf (Circulated to Surface)

WELL HISTORY

Oct '00: MIRU coiled tubing unit; establish circulation and then circulate hole clean to PBTD 4270'.

One week later attempt to run coiled tubing, unable to get past 260'.

Nacimiento @ 2530'

TOC @ 3075' (T.S.)

Ojo Alamo @ 3630'

Kirtland @ 3730'

Fruitland @ 3905'

Pictured Cliffs @ 4092'

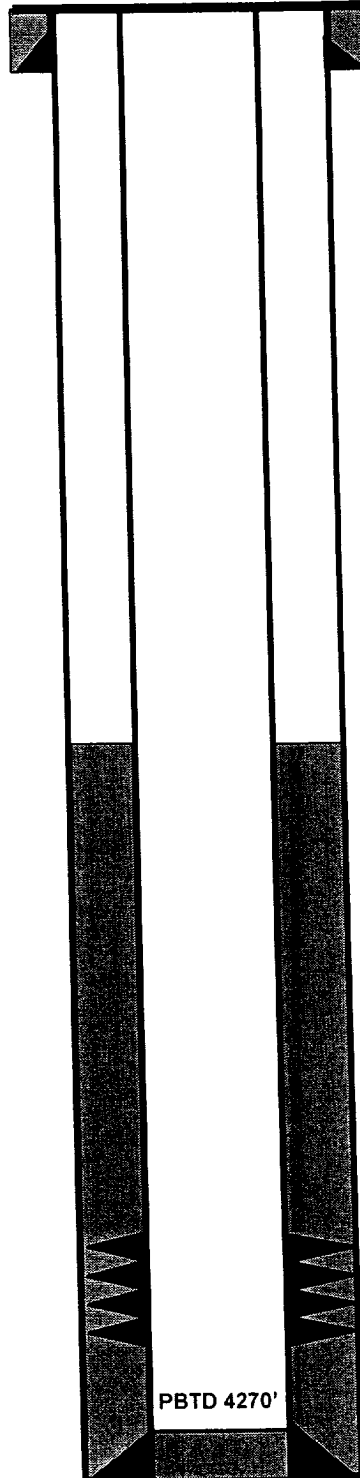
Pictured Cliffs Perforations:
4102' - 4162'

PBTD 4270'

2-7/8" 6.4# J-55 Casing set @ 4280'
Cement with 264 cf

6-3/4" hole

TD 4280'



San Juan 27-4 Unit #63

Proposed P&A

AIN #4390501

Tapacito Pictured Cliffs

NW, Section 27, T-27-N, R-4-W, Rio Arriba County, NM

API # 30-039-20731

Lat: 36 - 32.7798' Long: -107 - 14.436'

Today's Date: 06/01/01

Spud: 12/14/73

Completed: 5/16/74

Elevation: 7224'

12-1/4" hole

Nacimiento @ 2530'

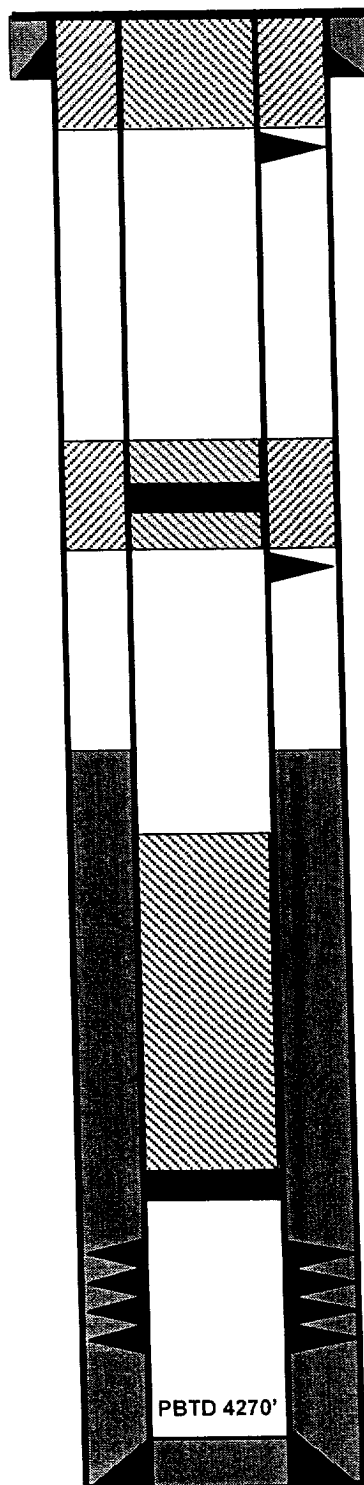
Ojo Alamo @ 3630'

Kirtland @ 3730'

Fruitland @ 3905'

Pictured Cliffs @ 4092'

6-3/4" hole



TD 4280'

8-5/8" 24#, J-55 Casing set @ 142'
Cemented with 118 cf (Circulated to Surface)

Perforate @ 192'

Plug #3: 192' - Surface
Cement with 60 sxs

Cmt Retainer @ 2530'

Perforate @ 2580'

Plug #2: 2580' - 2480'
Cement with 45 sxs,
40 sxs outside casing
and 5 sxs inside.

TOC @ 3075' (T.S.)

Plug #1: 4052' - 3580'
Cement with 20 sxs
(2 stages)

Set CIBP @ 4052'

Pictured Cliffs Perforations:
4102' - 4162'

2-7/8" 6.4# J-55 Casing set @ 4280'
Cement with 264 cf