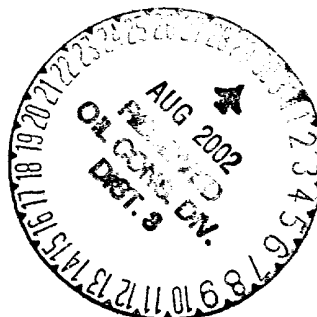


BURLINGTON RESOURCES

July 16, 2002

New Mexico Oil Conservation Division
1000 Rio Brazos Road
Aztec, New Mexico 87410

Re: San Juan 28-6 Unit #205
G Section 9, T-27-N, R-6-W
30-039-20850



Gentlemen:

Attached is a copy of the allocation for the recompletion of the subject well that was completed 12-17-01. DHC-279az was issued for this well.

Gas:	Mesaverde	75%
	Dakota	25%
Oil:	Mesaverde	0%
	Dakota	100%

These percentages were calculated using rate-time reserve estimate comparisons for each respective formation. Because the condensate production did not increase with the addition of the Mesaverde formation, condensate remains allocated solely to the Dakota formation.

Please let me know if you have any questions.

Sincerely,


Peggy Cole
Regulatory Supervisor

Xc: NMOCD – Santa Fe
Bureau of Land Management

3401 East 30th, Post Office Box 4289, Farmington, NM 87499 505-326-9727 Fax: 505-326-9563



Production Allocation Documentation

San Juan 28-6 Unit #205

Production Allocation

Based on Remaining Reserves

Mesaverde Recomplete December 2001

GAS

	<u>RR</u>	<u>Allocation %</u>
Dakota	445.3	25%
All	<u>1,749.1</u>	
Mesaverde	1,303.8	75%

Condensate

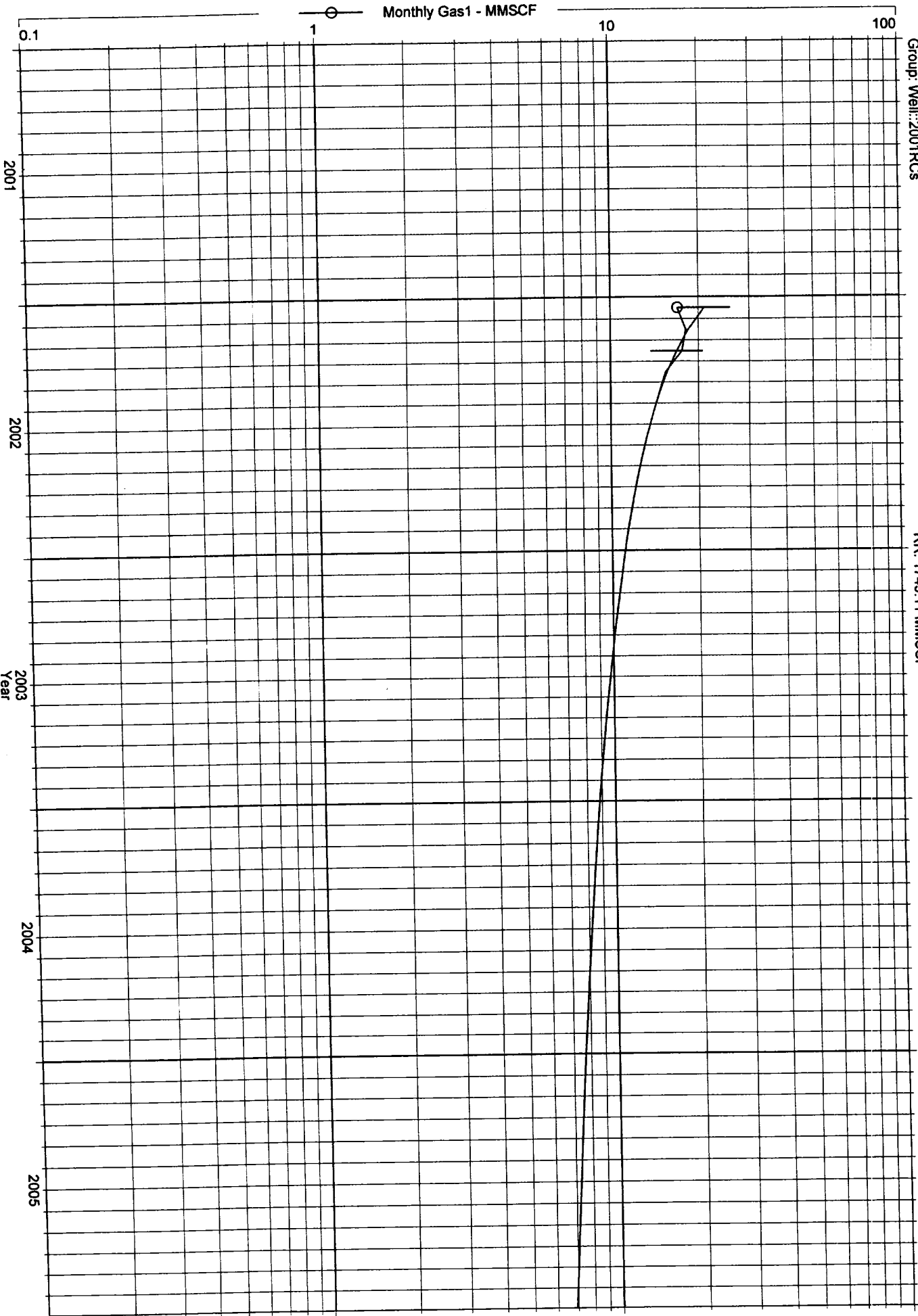
Since an increase in condensate was not seen with the addition of the Mesaverde formation, condensate remains allocated solely to the Dakota formation.

7/16/2002

SAN JUAN 28-6 205 (ALL) (SAN JUAN 28-6 UNIT 205 MV) Data: Jan. 2002-May 2002

Operator: BURLINGTON RESOURCES OG CO LP
Field:
Zone:
Type: Gas
Group: Well: 2001RCs
AllocALL (Rate-Time)
qi: 17.5929 MMSCF, Mar. 2002
qf: 0.456759 MMSCF, Oct. 2054
di(Hyp): 40
RR: 1749.11 MMSCF

Production Cums
Oil: 0 MSTB
Water: 0 MSTB
Cond: 0 MSTB



SAN JUAN 28-6 205 (DK) 4407901 (38733581509.4385) Data: Jan. 1979-Dec. 2001

Operator: BURLINGTON RESOURCES OG CO LP
Field: BASIN DAKOTA (PRORATED GAS)
Zone:
Type: Gas
Group: Well: 2001 R/Cs

AllocDK (Rate-Time)
qi: 4.87 MMSCF, Apr. 1997
qf: 0.457491 MMSCF, Dec. 2032
dl(Hyp): 21
RR: 445.341 MMSCF

Production Cumis
Oil: 0 MSTB
Water: 0 MSTB
Cond: 0 MSTB

