

UNITED STATES
DEPARTMENT OF THE INTERIOR
GEOLOGICAL SURVEY

30-039-21130

APPLICATION FOR PERMIT TO DRILL, DEEPEN, OR PLUG BACK

1a. TYPE OF WORK

DRILL ☒DEEPEN ☐PLUG BACK ☐

b. TYPE OF WELL

OIL
WELL ☐GAS
WELL ☒

OTHER

SINGLE
ZONE ☐MULTIPLE
ZONE ☐

2. NAME OF OPERATOR

Northwest Pipeline Corporation

3. ADDRESS OF OPERATOR

P. O. Box 90 Farmington, New Mexico 87401

4. LOCATION OF WELL (Report location clearly and in accordance with any State requirements.)*

At surface

845' FSL & 1420' FWL

At proposed prod. zone

14. DISTANCE IN MILES AND DIRECTION FROM NEAREST TOWN OR POST OFFICE*

90 Miles Southeast of Bloomfield

15. DISTANCE FROM PROPOSED*

LOCATION TO NEAREST
PROPERTY OR LEASE LINE, FT.
(Also to nearest drlg. unit line, if any)

16. NO. OF ACRES IN LEASE

17. NO. OF ACRES ASSIGNED
TO THIS WELL18. DISTANCE FROM PROPOSED LOCATION*
TO NEAREST WELL, DRILLING COMPLETED,
OR APPLIED FOR, ON THIS LEASE, FT.

19. PROPOSED DEPTH

6450'

20. ROTARY OR CABLE TOOLS

Rotary

21. ELEVATIONS (Show whether DF, RT, GR, etc.)

7115' GR

22. APPROX. DATE WORK WILL START*

23.

PROPOSED CASING AND CEMENTING PROGRAM

SIZE OF HOLE	SIZE OF CASING	WEIGHT PER FOOT	SETTING DEPTH	QUANTITY OF CEMENT
13 3/8"	9 5/8"	32.3	300'	240 sx.
8 3/4"	7"	20	4250'	175 sx.
6 1/4"	4 1/2"	10.5	4100'-6450'	215 sx.

Selectively perforate and stimulate the Mesa Verde formation.

A BOP will be installed after the surface casing is set and cemented.
All subsequent work will be performed through the BOP.

The W/2 of section 31 is dedicated to this well.



IN ABOVE SPACE DESCRIBE PROPOSED PROGRAM: If proposal is to deepen or plug back, give data on present productive zone and proposed new productive zone. If proposal is to drill or deepen directionally, give pertinent data on subsurface locations and measured and true vertical depths. Give blowout preventer program, if any.

24.

SIGNED

D. H. Maroncelli
D. H. Maroncelli

TITLE

Petroleum Engineer

DATE

8/19/75

(This space for Federal or State office use)

PERMIT NO.

APPROVAL DATE

APPROVED BY

TITLE

DATE

CONDITIONS OF APPROVAL, IF ANY:

OK

*See Instructions On Reverse Side

**NEW MEXICO OIL CONSERVATION COMMISSION
WELL LOCATION AND ACREAGE DEDICATION PLAT**

Form C-102
Supersedes C-128
Effective 1-1-65

All distances must be from the outer boundaries of the Section.

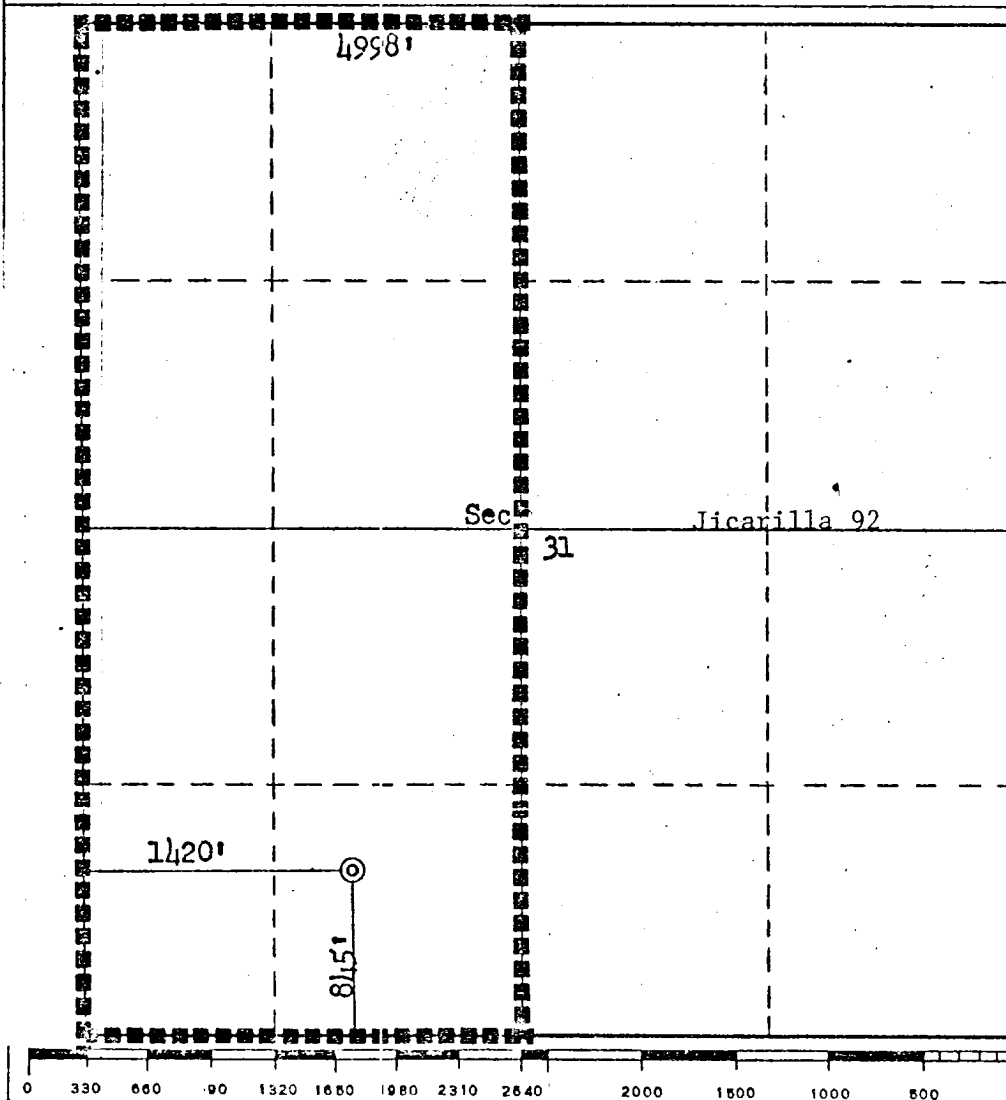
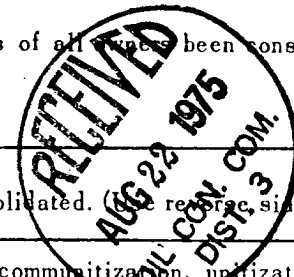
Operator Northwest Pipeline Corporation			Lease Jicarilla 92		Well No. 8
Unit Letter N	Section 31	Township 27N	Range 3W	County Rio Arriba	
Actual Footage Location of Well: 845 feet from the South line and 1420 feet from the West line					
Ground Level Elev. 7155	Producing Formation Mesa Verde		Pool Blanco	Dedicated Acreage: 285.82 Acres	

1. Outline the acreage dedicated to the subject well by colored pencil or hachure marks on the plat below.
2. If more than one lease is dedicated to the well, outline each and identify the ownership thereof (both as to working interest and royalty).
3. If more than one lease of different ownership is dedicated to the well, have the interests of all leases been consolidated by communitization, unitization, force-pooling, etc?

☐ Yes ☐ No If answer is "yes," type of consolidation _____

If answer is "no," list the owners and tract descriptions which have actually been consolidated. (See reverse side of this form if necessary.) _____

No allowable will be assigned to the well until all interests have been consolidated (by communitization, unitization, forced-pooling, or otherwise) or until a non-standard unit, eliminating such interests, has been approved by the Commission.



CERTIFICATION

I hereby certify that the information contained herein is true and complete to the best of my knowledge and belief.

D. H. Maroncelli

Name
D. H. Maroncelli

Position
Petroleum Engineer

Company
Northwest Pipeline Corp.

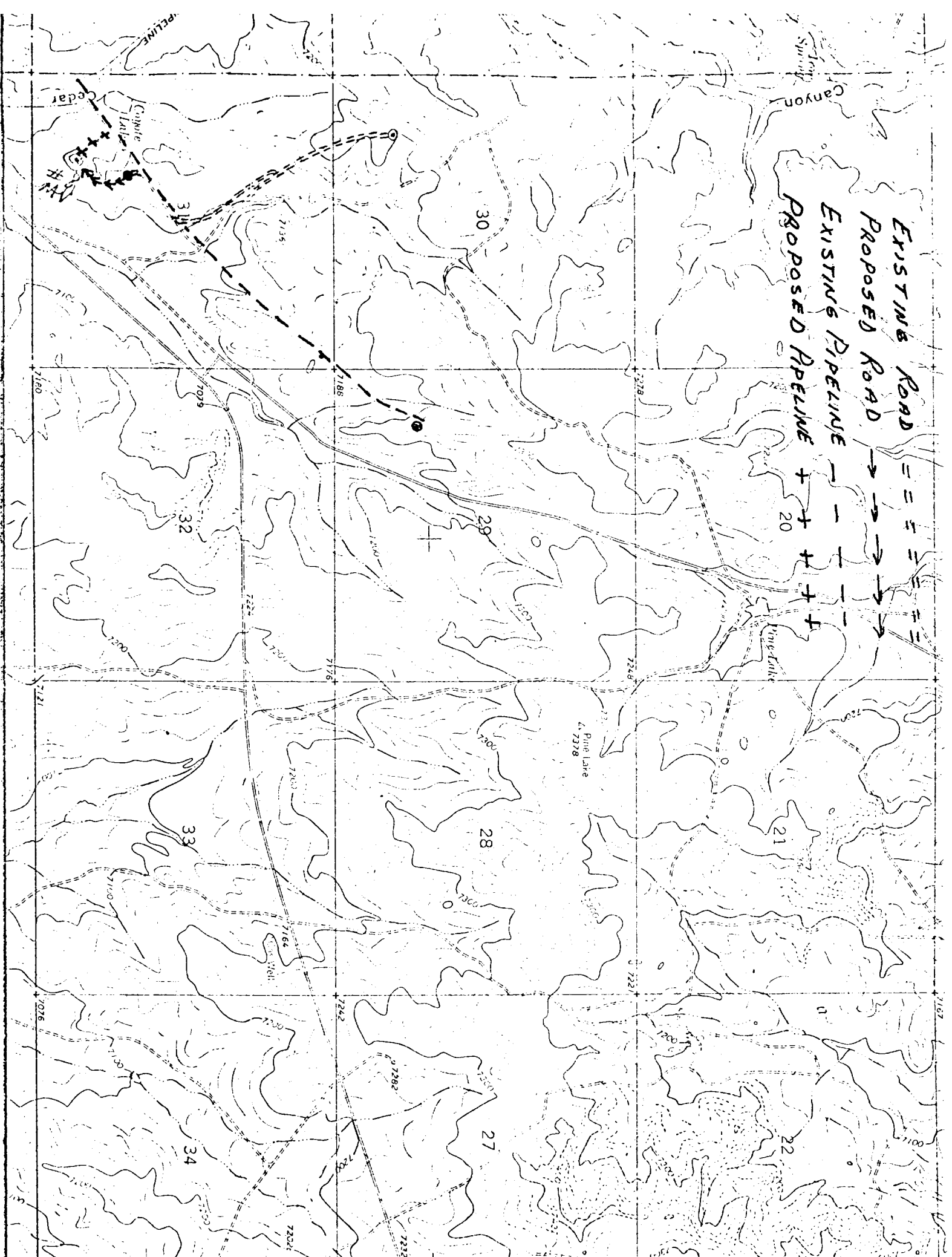
Date
August 19, 1975

I hereby certify that the well location shown on this plat was plotted from field notes of actual surveys made by me or under my supervision, and that the same is true and correct to the best of my knowledge and belief.

Date Surveyed
July 23, 1975

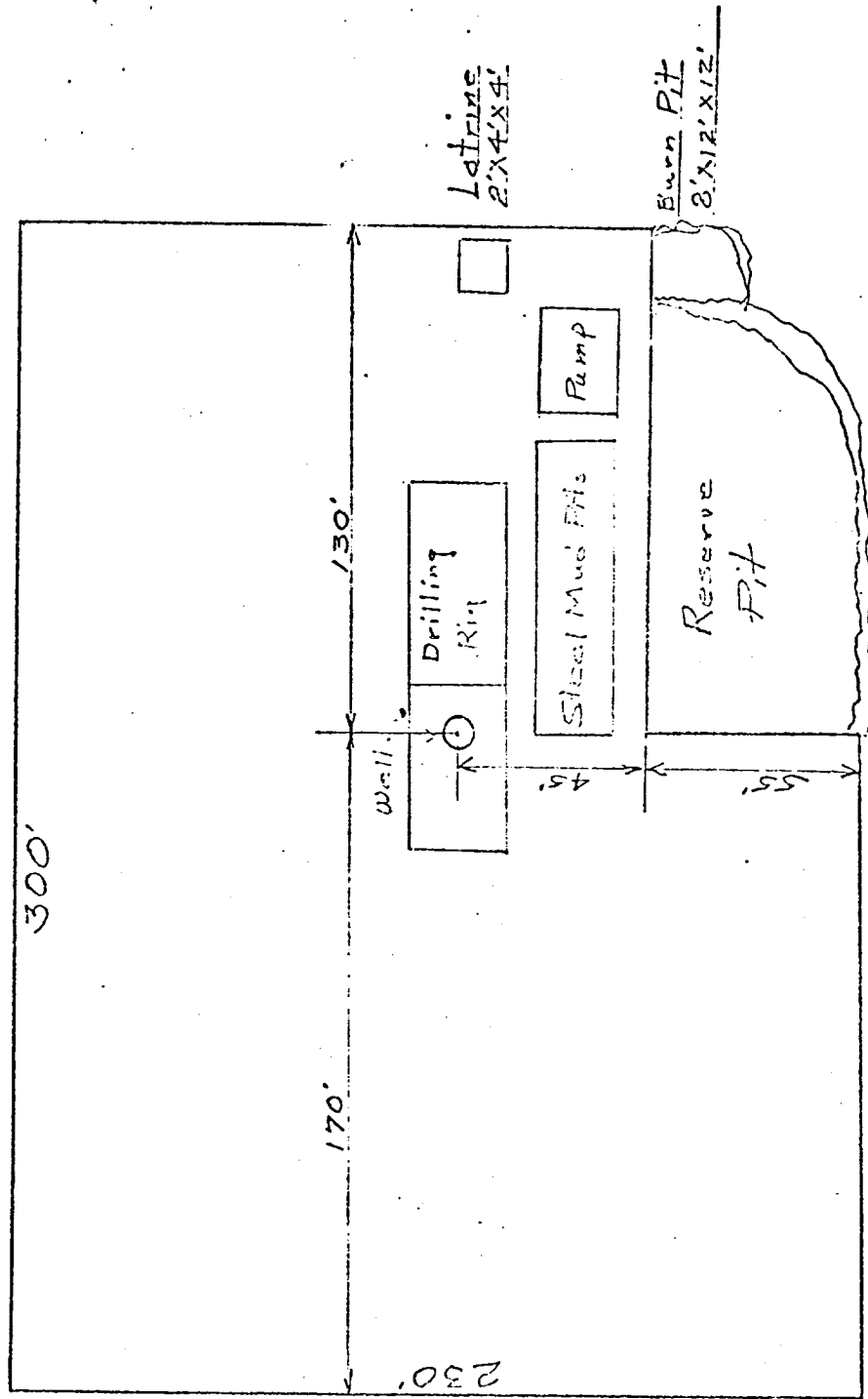
Registered Professional Engineer and/or Land Surveyor
Fred Kerr Jr.
Fred Kerr Jr.

Certificate No.
3950



LOCATION AND EQUIPMENT LAYOUT

TICARILLA 92 # 8



Northwest Pipeline Corporation



PRODUCTION & DRILLING
P. O. BOX 90
FARMINGTON, NEW MEXICO 87401

5114-26-75
August 19, 1975

United States Geological Survey
P. O. Box 1809
Durango, Colorado 81301

Re: Application for "Permit to Drill"
Jicarilla 92 #8 (MV)
SW/4, Sec. 31, T27N, R3W
Rio Arriba County, New Mexico

Gentlemen:

Information regarding existing roads, pipelines, flowlines, etc., relative to the above well location, is included on the enclosed attachments.

Water for drilling and completion operations will be obtained from the Jicarilla Tapicito Water Hole located in the SE/4 SE/4 Sec. 17, T26N, R4W.

Waste disposal will be in the burn pit, latrine or reserve pit. There will be no camp or airstrip associated with drilling this well. Upon completion or abandonment of this well the location will be cleaned, leveled, and a dry hole marker placed if applicable.

Sincerely,

D. H. Maroncelli
Northwest Pipeline Corporation
Petroleum Engineer

DHM/mag
xc: File

ANG 21 1975
U.S. GEOLOGICAL SURVEY