

submitted in lieu of Form 3160-5

UNITED STATES  
DEPARTMENT OF THE INTERIOR  
BUREAU OF LAND MANAGEMENT

Sundry Notices and Reports on Wells

<p>1. <b>Type of Well</b> GAS</p> <p>2. <b>Name of Operator</b> MERIDIAN OIL</p> <p>3. <b>Address &amp; Phone No. of Operator</b> PO Box 4289, Farmington, NM 87499 (505) 326-9700</p> <p>4. <b>Location of Well, Footage, Sec., T, R, M</b> 990'FNL, 990'FWL Sec 13, T-27-N, R-3-W, NMPM</p>	<p>5. <b>Lease Number</b> Jic.Contract 89</p> <p>6. <b>If Indian, All. or Tribe Name</b> Jicarilla Apache</p> <p>7. <b>Unit Agreement Name</b></p> <p>8. <b>Well Name &amp; Number</b> Jicarilla 89 #6</p> <p>9. <b>API Well No.</b> 30-039-</p> <p>10. <b>Field and Pool</b> <i>EXT</i> Blanco MV/Gavilan PC</p> <p>11. <b>County and State</b> Rio Arriba Co, NM</p>
---	--

12. CHECK APPROPRIATE BOX TO INDICATE NATURE OF NOTICE, REPORT, OTHER DATA

Type of Submission

Type of Action

<p><input checked="" type="checkbox"/> Notice of Intent</p> <p><input type="checkbox"/> Subsequent Report</p> <p><input type="checkbox"/> Final Abandonment</p>	<p><input type="checkbox"/> Abandonment</p> <p><input checked="" type="checkbox"/> Recompletion</p> <p><input type="checkbox"/> Plugging Back</p> <p><input type="checkbox"/> Casing Repair</p> <p><input type="checkbox"/> Altering Casing</p> <p><input type="checkbox"/> Other -</p>	<p><input type="checkbox"/> Change of Plans</p> <p><input type="checkbox"/> New Construction</p> <p><input type="checkbox"/> Non-Routine Fracturing</p> <p><input type="checkbox"/> Water Shut off</p> <p><input type="checkbox"/> Conversion to Injectio</p>
---	---	---

13. Describe Proposed or Completed Operations

The Pictured Cliffs will be perforated and stimulated in the following manner: TOOH w/tbg. Set RBP above existing Mesa Verde perms. Run CBL to verify TOC. If good top is not seen at least 50' above proposed top Pictured Cliffs perf, remedial cement work will be performed. The Pictured Cliffs will be perf'd 3516-3772' and stimulated with approximately 1500 gal acid and fracture stimulated. Run after frac GR log to verify if frac stayed in zone. TIH w/2 3/8" tbg landed @ 6018'. Application has been made to NMOCD for commingling. Attached is a procedure and wellbore diagram.

**RECEIVED**  
APR 25 1994  
**OIL CON. DIV.**  
DIST. 3

14. I hereby certify that the foregoing is true and correct.

Signed *[Signature]* (BA) Title Regulatory Affairs Date 4/14/94

(This space for Federal or State Office use)

APPROVED BY *Shirley Mondy* Title \_\_\_\_\_ Date APR 22 1994

CONDITION OF APPROVAL, if any: \_\_\_\_\_

NMOCD

NEW MEXICO OIL CONSERVATION COMMISSION  
WELL LOCATION AND ACREAGE DEDICATION PLAT

Form C-102  
Supersedes C-128  
Effective 1-1-65

All distances must be from the outer boundaries of the Section.

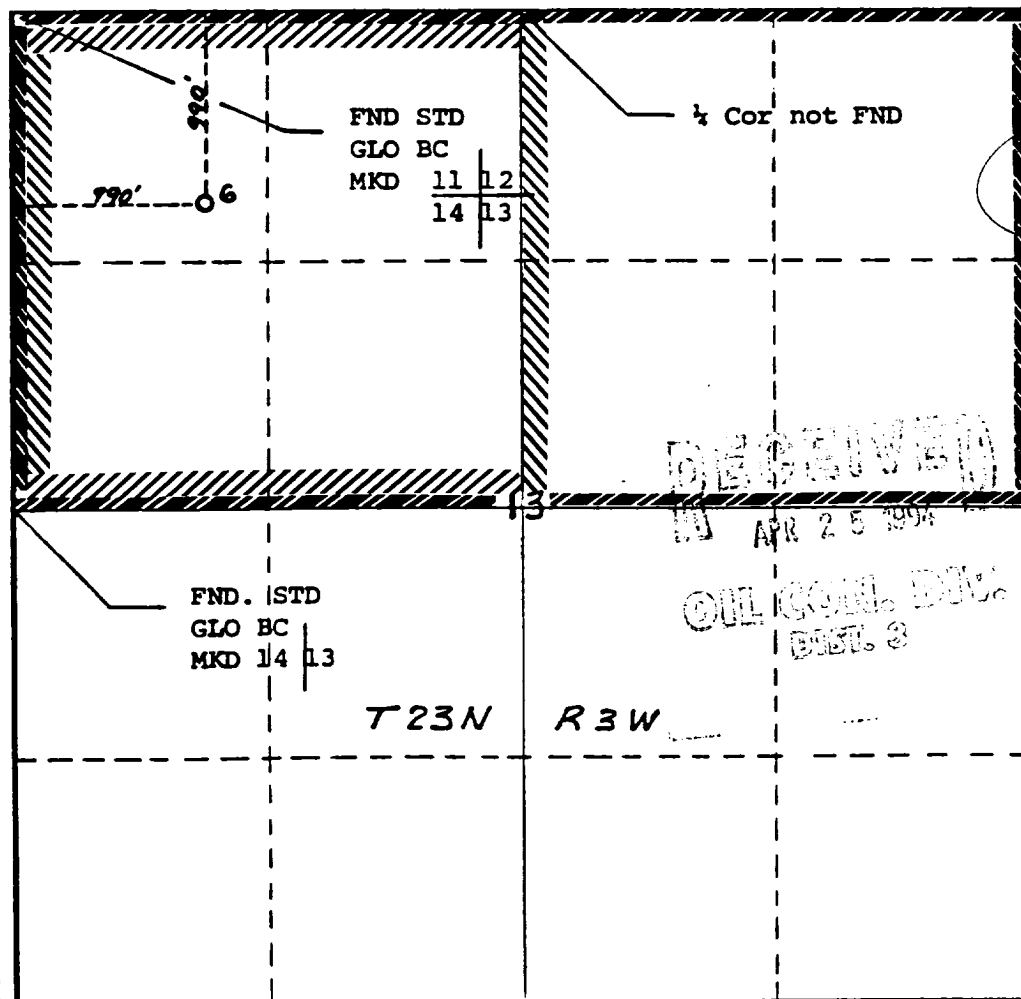
Operator <b>Meridian Oil Inc.</b>			Lease <b>Jicarilla 89</b>		Well No. <b>6</b>
Unit Letter <b>D</b>	Section <b>13</b>	Township <b>27N</b>	Range <b>3W</b>	County <b>Rio Arriba</b>	
Actual Footage Location of Well: <b>990</b> feet from the <b>North</b> line and <b>990</b> feet from the <b>West</b> line					
Ground Level Elev. <b>7012</b>	Producing Formation <b>Mesaverde / Pic. Cliffs</b>		Pool <b>Blanco Mesaverde Gas / Gavilan</b>	Dedicated Acreage: <b>320 / 160</b> Acres	

1. Outline the acreage dedicated to the subject well by colored pencil or hachure marks on the plat below.
2. If more than one lease is dedicated to the well, outline each and identify the ownership thereof (both as to working interest and royalty).
3. If more than one lease of different ownership is dedicated to the well, have the interests of all owners been consolidated by communitization, unitization, force-pooling, etc?

☐ Yes ☐ No If answer is "yes," type of consolidation \_\_\_\_\_

If answer is "no," list the owners and tract descriptions which have actually been consolidated. (Use reverse side of this form if necessary.) \_\_\_\_\_

No allowable will be assigned to the well until all interests have been consolidated (by communitization, unitization, forced-pooling, or otherwise) or until a non-standard unit, eliminating such interests, has been approved by the Commission.  
**N 89°51'43"E - 5275.34'**



CERTIFICATION

I hereby certify that the information contained herein is true and complete to the best of my knowledge and belief.

Name  
**Peggy Bradfield**

Position  
**Regulatory Representative**

Company  
**Meridian Oil Inc.**

Date  
**4-14-94**

I hereby certify that the well location shown on this plat was plotted from field notes of actual surveys made by me or under my supervision and that the same is true and correct to the best of my knowledge and belief.

Date Surveyed

**12-2-81**

Registered Professional Engineer and/or Land Surveyor

**H.A. Carson, Jr.**

Certificate No.

**5063**

S 0° 03' 02" W - 2645.35

**JICARILLA 89 #6**  
Unit D, Section 13, T27N, R03W  
Recommended Recompletion Procedure  
*Pictured Cliffs Pay Add & Completion*

Note: Notify BLM (761-8762) and NMOCD (334-6178) 24 hours prior to rig activity.

---

Inspect location and install and or test rig anchors. Install 1 - 400 bbl rig tank and fill w/ 2% KCl water. Approximately 194 jts. 2-3/8" 4 7# J-55 tubing will be required (MOI, District Tools) for cleanout and production. Comply with all BLM, NMOCD, Jicarilla Apache, and MOI rules and regulations. Notify engineering when work has commenced. Hold Safety Meetings on a regular basis.

---

1. Install 3 X 400 bbl frac tanks and fill with 2% KCl water.
2. Hold Safety Meeting. MIRU. Place fire and safety equipment in easily accessible locations. NU relief line and bloore line to laydown flow tank. Obtain and record all wellhead pressures.
3. Blow down tubing. If tubing will not blow down, kill well with KCl water. PBTD is 6060'.
4. TOOH with 5805' of 2-3/8" 4 70# tubing, visually inspect and tally tubing.
5. RU wireline. RIH with 5-1/2" 14.0# gauge ring and check pipe. PU Retrievable bridge plug, TIH and set bridge plug at 3830'. Run GR - CBL - CCL in 5-1/2 casing from bridge plug to Surface pipe (Cmt circulated on both stages). Good TOC must be above 3400' to continue. Evaluate GR- CBL- CCL and send copy to production engineering.
6. TIH w/ packer and one stand. Pressure test packer and one stand and casing to 3000 psi. for 15 min. If pressure test fails, prepare to test and repair casing. Contact Production Engineering and a casing repair will be submitted. TOOH with packer and one stand.

**Main Pictured Cliffs Stimulation:**

7. Perforate the following intervals w/ 3-1/8" HSC -3125-306, 12 gram Owen charges 0.31" holes w/ 12.02 " penetration, 2 jspt:

**3707' - 3714', 3730' - 3752', 3758' - 3772'. (86 Holes)**

8. RD wireline. TIH w/ packer and one stand.
9. RU stimulation company. **Hold Safety Meeting.** Pressure test surface treating lines to 4000 psi. **Maximum STP during acid job is 3000 psi.** Pump 2,000 gals 15% HCl w/additives at a rate of 6-10 BPM, attempt to ball-out the perforations. Drop a total of 129 7/8" RCN ball sealers (1.3sp.gr.) spaced evenly throughout the job. Record rates and pressures while attempting to achieve ball-out.

Jicarilla 89 #6  
Pictured Cliffs Pay-Add

10. RD stimulation company. TOOH w/ packer and one stand. RU wireline. run junk basket to knock-off/retrieve as many ballsealers as possible. TIH w/ packer and one stand. RU stimulation company. Prepare to fracture stimulate the Main Pictured Cliffs.
11. Pressure test surface treating lines to 4000 psi. **Maximum treating pressure is 3000 psi.** Fracture stimulate the PC according to the attached procedure. Flow-back the well immediately using a variable choke manifold. Increase choke size as needed to keep the well from logging off, if possible. When pressures and flow rates allow, TOOH w/ packer and one stand. PU Retrievable bridge plug, TIH and set bridge plug at 3664'.

**Upper Pictured Cliffs Stimulation:**

12. Perforate the following intervals w/ 3-1/8" HSC -3125-306. 12 gram Owen charges 0.31" holes w/ 12.02 " penetration. 2 jsf:

**3516' - 3536', 3538' - 3548', 3553' - 3578', 3594' - 3598', 3614' - 3644'. (178 Holes)**

13. RD wireline. TIH w/ packer and one stand.
14. RU stimulation company. **Hold Safety Meeting.** Pressure test surface treating lines to 4000 psi. **Maximum STP during acid job is 3000 psi.** Pump 4,000 gals 15% HCl w/additives at a rate of 6-10 BPM, attempt to ball-out the perforations. Drop a total of 260 7/8" RCN ball sealers (1.3sp.gr.) spaced evenly throughout the job. Record rates and pressures while attempting to achieve ball-out.
15. RD stimulation company. TOOH w/ packer and one stand. RU wireline. run junk basket to knock-off/retrieve as many ballsealers as possible. TIH w/ packer and one stand. RU stimulation company. Prepare to fracture stimulate the Upper Pictured Cliffs.
16. Pressure test surface treating lines to 4000 psi. **Maximum treating pressure is 3000 psi.** Fracture stimulate the PC according to the attached procedure. Flow-back the well immediately using a variable choke manifold. Increase choke size as needed to keep the well from logging off, if possible. When pressures and flow rates allow, TOOH w/ packer and one stand.
17. TIH w/ retrieving head and 2-3/8" 4.70# workstring and clean out to the retrievable bridge plug @ 3664' with air until sand production is minimal. RIH with wireline and obtain a 24 hour Pressure Build-up test. Obtain pitot gauge for the Upper Pictured Cliffs formation. Record pitot gauge as the Upper Pictured Cliffs formation only. Latch onto the retrievable bridge plug and TOOH.
18. TIH w/ notched collar on 2-3/8" 4.70# workstring and clean out to the retrievable bridge plug @ 3830' with air until sand production is minimal. RIH with wireline and obtain a 24 hour Pressure Build-up test. Obtain pitot gauge for the Pictured Cliffs formation. Record pitot gauge as the Pictured Cliffs formation only. TOOH.

**Jicarilla 89 #6  
Pictured Cliffs Pay-Add**

19. TIH w/ one joint of 2-3/8" 4 7# J-55 tubing. 'F' nipple, expendable check, and 2-3/8" production tubing. Cleanout to 3830' with air. Land tubing at +/-3770' (60' of rathole) and obtain final pitot gauge. Commingle application will be filed with the NMOCD and the RBP above the MV will be removed and the well commingled after four months of PC production evaluation. ND BOP, NU WH. Contact Production Operations for well tie-in. RD and MOL.

Review: \_\_\_\_\_  
Regional Engineer, AR9

Approved: PJBA  
Drilling Superintendent

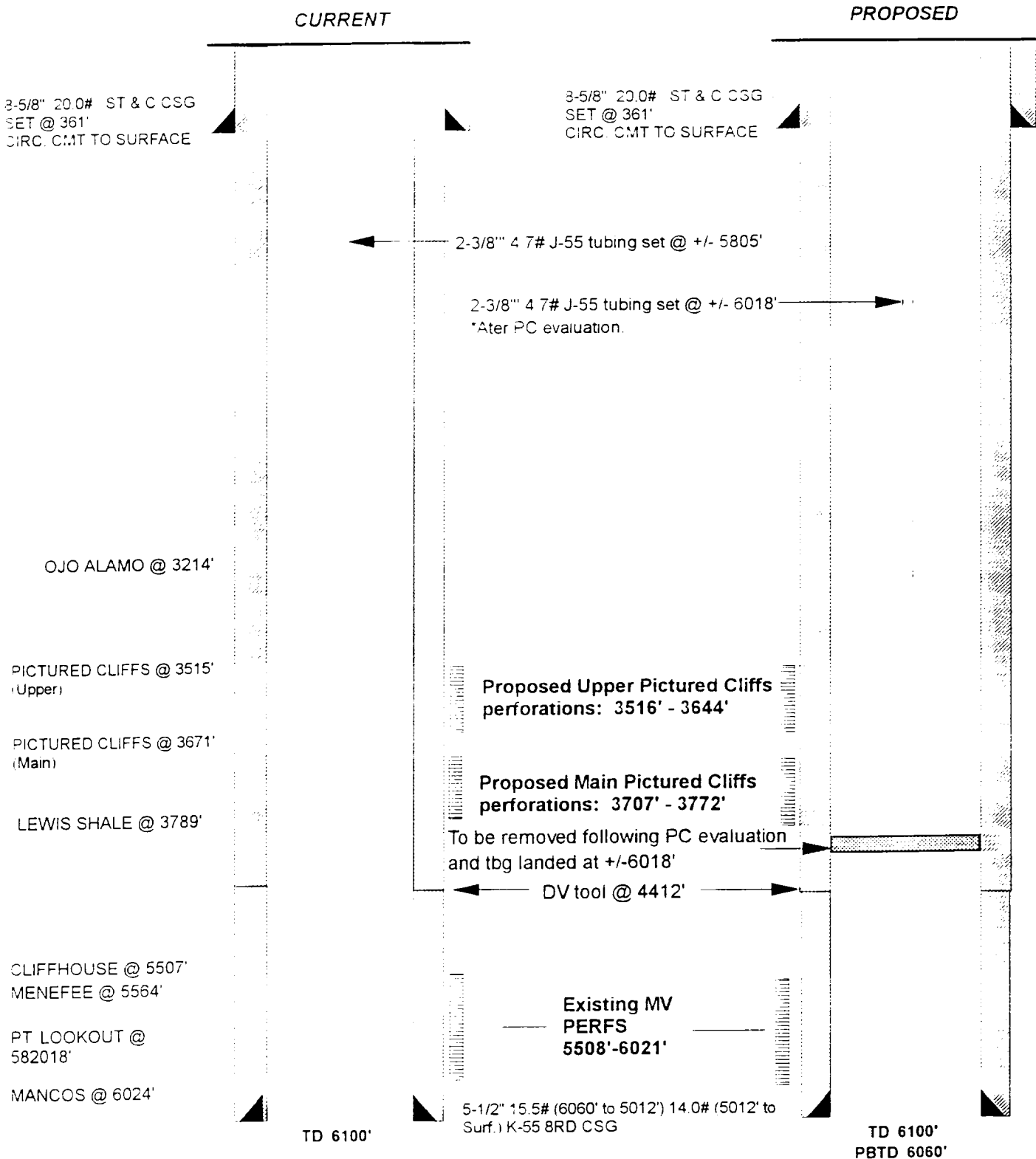
**Suggested Vendors/Contacts:**

Wireline:	Blue Jet	325-5584
Bridge Plugs/PKR	Mountain States	326-5141
Pressure Build-up:	Tefteller Inc.	325:8476
Tubing:	MOI, District Tools	326-9826
Stimulation:	BJ Services	327-6288
Production Oper.:	Bruce Voiles	326-9571
Engineering:	Brian Ault	326-9871 w 326-6613 h

# Jicarilla 89 #6

Unit D. Sec. 13. T27N. R3W

Pictured Cliffs Pay Add and Stimulation



**Pertinent Data Sheet - Jicarilla 89 #6**

**Location:** 990' FNL, 990' FWL, Unit D, Section 13, T-27-N, R-03-W

**Field:** Blanco Mesaverde  
Gavilan Pictured Cliffs

**Elevation:** 7012' GL

**TD:** 6100'  
**PBTD:** 6060'

**Spud Date:** 02/08/82  
**Completed:** 04/20/82

**DP#:** 29190A (MV)  
**Prop. #:** 071337600  
**GWl:** 100%  
**NRI:** 87.5%

**Casing Record:**

<u>Hole Size</u>	<u>Casing Size</u>	<u>Weight &amp; Grade</u>	<u>Depth Set</u>	<u>Cement</u>	<u>Top/Cement</u>
12-1/4"	8-5/8"	20.0# S.W. & C.	361'	250 sx	Surface
7-7/8"	5-1/2"	15.5#, 14# K-55*	6109'	1700 sx**	Surface

- \* 5-1/2" 15.5# set from TD to 5012', 14# set from 5012' to Surface.  
\*\* Two stages, DV set @ 4412'. Stg 1 550 sx pumped, circ. cmt to surface  
Stg 2 1150 sx pumped, circ. cmt to surface

**Tubing Record:**

<u>Tubing Size</u>	<u>Weight &amp; Grade</u>	<u>Depth Set</u>
2-3/8"	4.70# K-55	5805' SN @ 5768'

**Formation Tops:**

Ojo Alamo	3214'
Pictured Cliffs (Upper)	3515'
Pictured Cliffs (Main)	3671'
Lewis	3920'
Cliffhouse	5507'
Menefee	5564'
Point Lookout	5820'
Mancos	6024'

**Logging Record:** Induction, CN/CDL, GR and Caliper.

**Stimulation:** **Perfed MesaVerde:** 5508'-6021'  
**Frac'd MesaVerde:** 2 stages; 5,500 gals 15% NEA, 184,800 gallons water,  
146,800# 20/40 sand.

**Workover History:** N/A.