

UNITED STATES
DEPARTMENT OF THE INTERIOR
GEOLOGICAL SURVEY

30 039-22955

APPLICATION FOR PERMIT TO DRILL, DEEPEN, OR PLUG BACK

1a. TYPE OF WORK
DRILL DEEPEN PLUG BACK

b. TYPE OF WELL
OIL WELL GAS WELL OTHER
SINGLE ZONE MULTIPLE ZONE

2. NAME OF OPERATOR
Caulkins Oil Company

3. ADDRESS OF OPERATOR
P.O. Box 780 Farmington, New Mexico

4. LOCATION OF WELL (Report location clearly and in accordance with any State requirements.)
At surface 890' F/S & 1120 F/E
At proposed prod. zone Same

RECEIVED
DEC 31 1981
U.S. GEOLOGICAL SURVEY
FARMINGTON, N. M.

14. DISTANCE IN MILES AND DIRECTION FROM NEAREST TOWN OR POST OFFICE*
35 Miles Southeast of Blanco, New Mexico

15. DISTANCE FROM PROPOSED* LOCATION TO NEAREST PROPERTY OR LEASE LINE, FT. (Also to nearest drlg. unit line, if any)
890'

18. DISTANCE FROM PROPOSED LOCATION* TO NEAREST WELL, DRILLING, COMPLETED, OR APPLIED FOR, ON THIS LEASE, FT.
110'

21. ELEVATIONS (Show whether DF, RT, GR, etc.)
6661 GR

5. LEASE DESIGNATION AND SERIAL NO.

NM 03547

6. IF INDIAN, ALLOTTEE OR TRIBE NAME

7. UNIT AGREEMENT NAME

8. FARM OR LEASE NAME

Breech F

9. WELL NO.

11 M

10. FIELD AND BOOFL OR WILDCAT

Blanco Mesa Verde, Basin Dakota

11. SEC., T., R., M., OR BLK. AND SURVEY OR AREA

Section 35 27 N 6 W

12. COUNTY OR PARISH

Rio Arriba

13. STATE
New Mexico

22. APPROX. DATE WORK WILL START*
June 1, 1982

PROPOSED CASING AND CEMENTING PROGRAM

SIZE OF HOLE	SIZE OF CASING	WEIGHT PER FOOT	SETTING DEPTH	QUANTITY OF CEMENT
13 3/4"	9 5/8"	32.30	300' 200' 1400'	Sufficient to circulate
7 7/8"	5 1/2"	15.5 & 17	7600	250 Sacks/1400 Cover Q ₂ Alamo

Surface Formation San Jose. No abnormal pressure or temperature anticipated.

It is proposed to drill new hole, surface to 7600' using 9.0# Gel based mud. Float will be run in drill pipe at bit. ES Induction Log will be run in open hole. A Schaeffer 10" Model IWP, 6000# test BOP will be in use at all times while drilling and cementing. BOP will be tested at least one time during each 24 hour period and results recorded on daily drilling report.

New 9 5/8" Surface casing will be set at approx. 300' and cemented with sufficient cement to circulate to surface, approx. 250 Sks.

New 5 1/2" 15.5 and 17# casing will be cemented top to bottom with sufficient cement to circulate ; approx. 1400 ska. Casing will be cemented in 3 stages with tools set below Point Lookout sands and below Pictured Cliffs sands. (Over)

IN ABOVE SPACE DESCRIBE PROPOSED PROGRAM: If proposal is to deepen or plug back, give data on present productive zone and proposed new productive zone. If proposal is to drill or deepen directionally, give pertinent data on subsurface locations and measured and true vertical depths. Give blowout preventer program, if any.

24. SIGNED Charles E. Verque TITLE Superintendent DATE 12-28-81

(This space for Federal or State office use)

PERMIT NO.

APPROVED BY oht
CONDITIONS OF APPROVAL, IF ANY:

RECEIVED
APR 23 1982
OIL CON. COM.
DIST. 3

APPROVED
AS AMENDED
DATE APR 16 1982
JAMES F. [Signature]
DISTRICT ENGINEER

Instructions

General: This form is designed for submitting proposals to perform certain well operations, as indicated, on all types of lands and leases for appropriate action by either a Federal or a State agency, or both, pursuant to applicable Federal and/or State laws and regulations. Any necessary special instructions concerning the use of this form and the number of copies to be submitted, particularly with regard to local, area, or regional procedures and practices, either are shown below or will be issued by, or may be obtained from, the local Federal and/or State office.

Item 1: If the proposal is to re-drill to the same reservoir at a different subsurface location or to a new reservoir, use this form with appropriate notations. Consult applicable State or Federal regulations concerning subsequent work proposals or reports on the well. Consult local

Item 4: If there are no applicable State requirements, locations on Federal or Indian land should be described in accordance with Federal requirements. Consult local State or Federal office for specific instructions.

Item 14: Needed only when location of well cannot readily be found by road from the land or lease description. A plat, or plats, separate or on this reverse side, showing the roads to, and the surveyed location of, the well, and any other required information, should be furnished when required by Federal or State agency offices.

Items 15 and 18: If well is to be, or has been directionally drilled, give distances for subsurface location of hole in any present or objective production zone.

Item 22: Consult applicable Federal or State regulations, or appropriate officials, concerning approval of the proposal before operations are started.

U.S. GOVERNMENT PRINTING OFFICE: 1963-O-711-366

Centralizers will be run on casing thru Mesa Verde and Dakota zone.

Well will be completed in Mesa Verde and Dakota zones.

Packer will be set between Mesa Verde zone and Dakota zone for Dual Completion.

New 2 1/16" IJ tubing will be run thru packer to Dakota zone.

New 1 1/4" tubing will be run to Mesa Verde zone for Mesa Verde production.

All zones will be perforated and fractured to stimulate production.

Gas produced from this well contracted to Gas Company of New Mexico.

Estimated Formation Tops:

Alamo:	2650
Pictured Cliffs	3242
Cliff House	4941
Point Lookout	5460
Greenhorn	7372
Graneros	7458
Dakota	7580

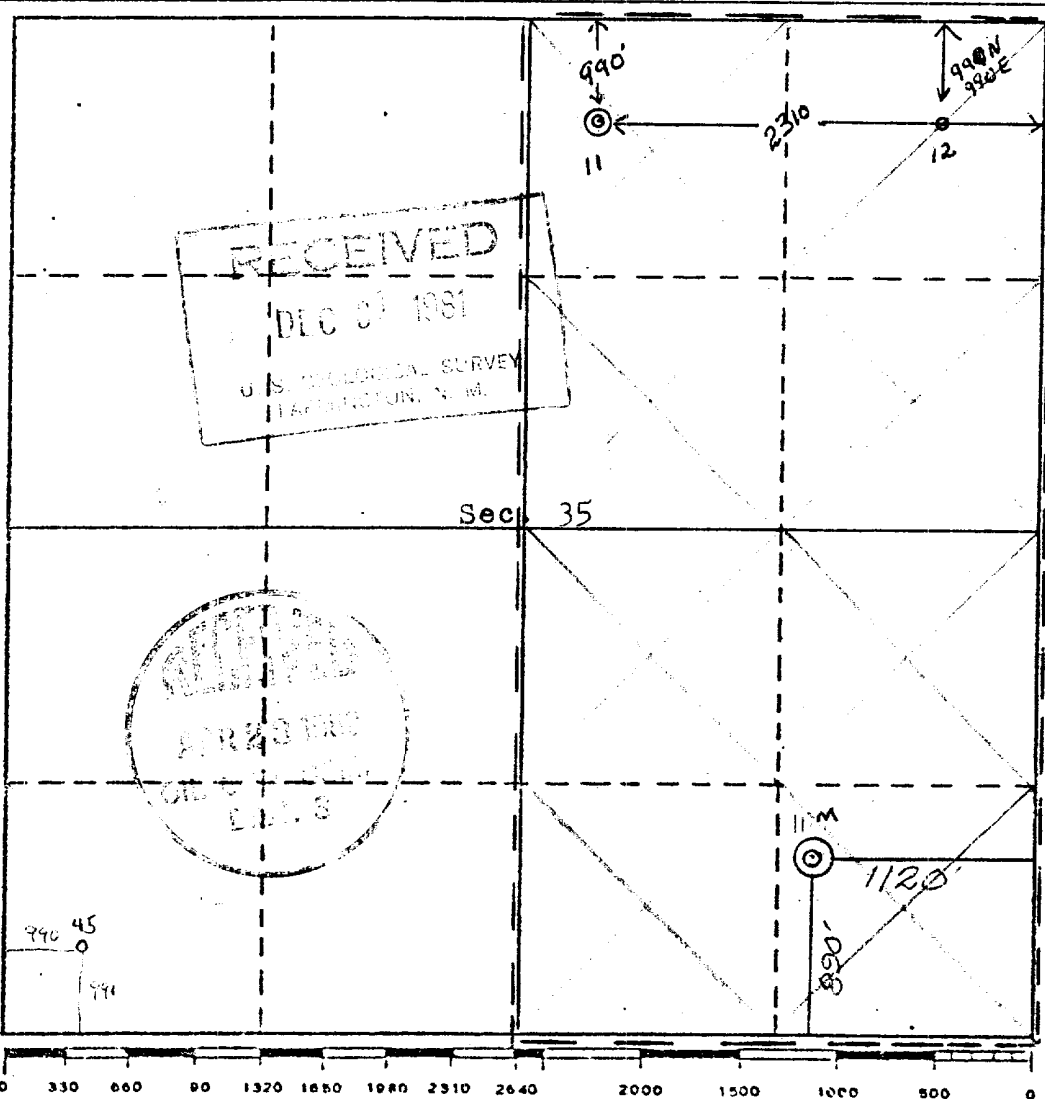
All distances must be from the outer boundaries of the Section.

Operator CAULKINS OIL COMPANY			Lease BREECH F		Well No. M
Unit Letter P	Section 25	Township 27 NORTH	Range 6 WEST	County RIO ARriba	
Actual Footage Location of Well: 390 feet from the SOUTH line and 1120 feet from the EAST line					
Ground Level Elev. 6661	Producing Formation Mesa Verde & Dakota		Pool Blanco Mesa Verde & Basin Dakota		Dedicated Acreage: E 320 Acres

1. Outline the acreage dedicated to the subject well by colored pencil or hachure marks on the plat below.
2. If more than one lease is dedicated to the well, outline each and identify the ownership thereof (both as to working interest and royalty).
3. If more than one lease of different ownership is dedicated to the well, have the interests of all owners been consolidated by communitization, unitization, force-pooling, etc?
 Yes No If answer is "yes," type of consolidation _____

If answer is "no," list the owners and tract descriptions which have actually been consolidated. (Use reverse side of this form if necessary.) _____

No allowable will be assigned to the well until all interests have been consolidated (by communitization, unitization, forced-pooling, or otherwise) or until a non-standard unit, eliminating such interests, has been approved by the Division.



CERTIFICATION

I hereby certify that the information contained herein is true and complete to the best of my knowledge and belief.

Charles E. Verquer
Name

Charles E. Verquer

Position

Superintendent

Company

Caulkins Oil Company

Date

December 28, 1981

I hereby certify that the well location shown on this plat was plotted from field notes of actual surveys made by me or under my supervision, and that the same is true and correct to the best of my knowledge and belief.

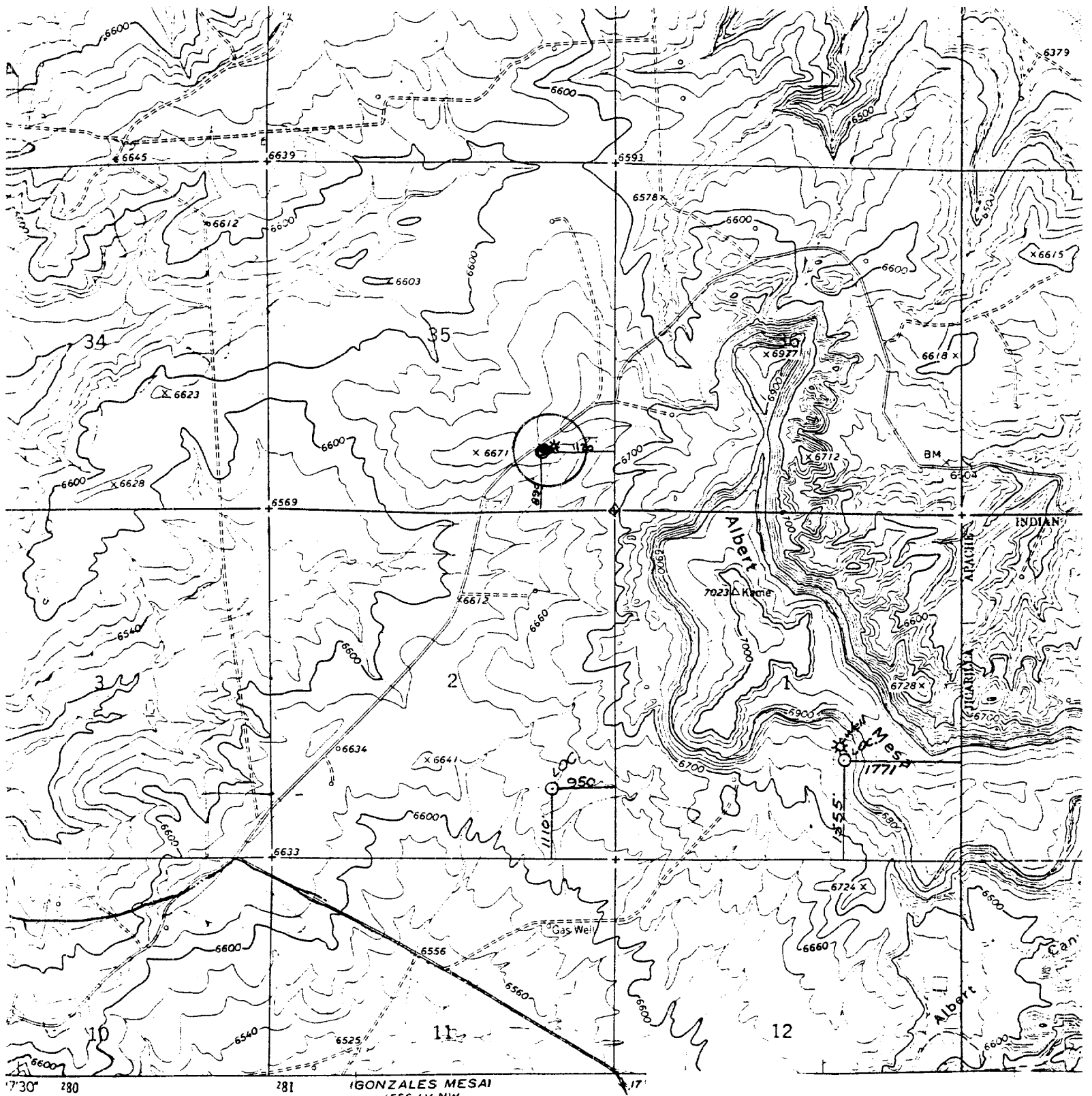
17 December 1981

Date Surveyed
Curtis T. Stocking

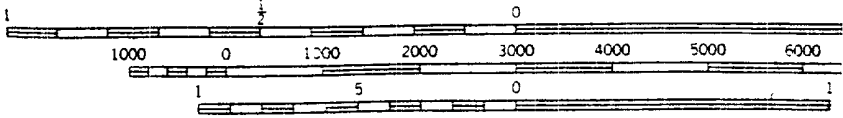
Registered Professional Engineer
and/or Land Surveyor
Curtis T. Stocking

Certificate No.

5980



(GONZALES MESA)
4556 1V NW
SCALE 1:24 000



CONTOUR INTERVAL 20 FEET
DATUM IS MEAN SEA LEVEL

VICINITY MAP
CAULKINS OIL COMPANY
showing
Well Location in SE/4 SE/4 of
Section 35, T27N, R6W, N.M.P.M.
Rio Arriba County, New Mexico
Scale: 1"

THIS MAP COMPLIES WITH NATIONAL MAP ACCURACY STANDARDS
FOR SALE BY U.S. GEOLOGICAL SURVEY, DENVER, COLORADO 80225. OR WAS
A FOLDER DESCRIBING TOPOGRAPHIC MAPS AND SYMBOLS IS AVAILABLE O

All distances must be from the outer boundaries of the Section.

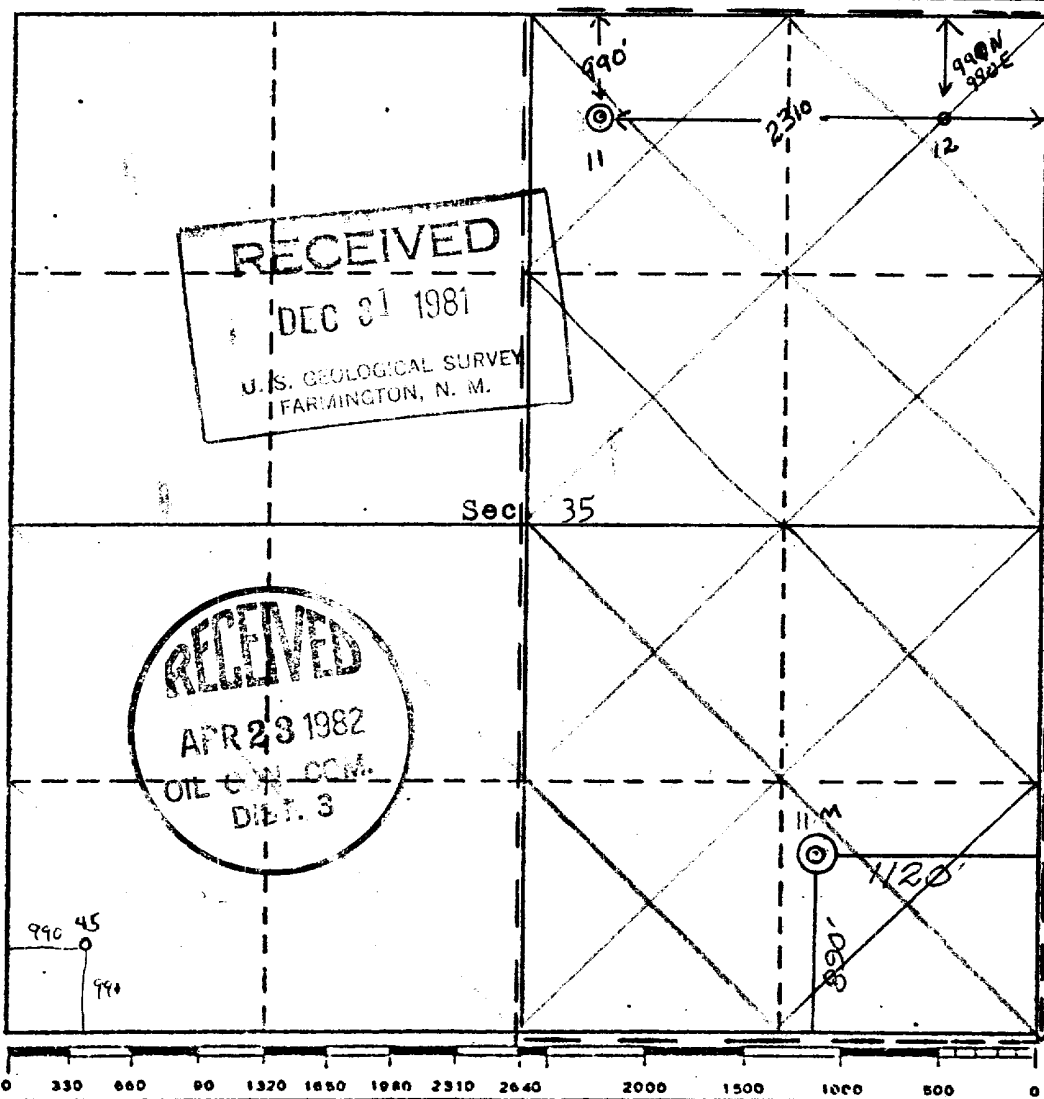
Operator CAULKINS OIL COMPANY			Lease BREECH F			Well No. M 11		
Unit Letter P	Section 25	Township 27 NORTH	Range 6 WEST	County RIO ARRIBA				
Actual Postage Location of Well: 390 feet from the SOUTH line and 1120 feet from the EAST line								
Ground Level Elev. 6661	Producing Formation Mesa Verde & Dakota		Pool Blanco Mesa Verde & Basin Dakota			Dedicated Acreage: E 320 Acres		

1. Outline the acreage dedicated to the subject well by colored pencil or hachure marks on the plat below.
2. If more than one lease is dedicated to the well, outline each and identify the ownership thereof (both as to working interest and royalty).
3. If more than one lease of different ownership is dedicated to the well, have the interests of all owners been consolidated by communitization, unitization, force-pooling, etc?

Yes No If answer is "yes," type of consolidation _____

If answer is "no," list the owners and tract descriptions which have actually been consolidated. (Use reverse side of this form if necessary.) _____

No allowable will be assigned to the well until all interests have been consolidated (by communitization, unitization, forced-pooling, or otherwise) or until a non-standard unit, eliminating such interests, has been approved by the Division.



CERTIFICATION

I hereby certify that the information contained herein is true and complete to the best of my knowledge and belief.

Charles E. Verquer
Name
Charles E. Verquer
Position
Superintendent
Company
Caulkins Oil Company
Date
December 28, 1981

I hereby certify that the well location shown on this plat was plotted from field notes of actual surveys made by me or under my supervision, and that the same is true and correct to the best of my knowledge and belief.

17 December 1981
Date Surveyed
Curtis T. Stocking
Registered Professional Engineer
and/or Land Surveyor
Curtis T. Stocking
Certificate No. **5980**