

UNITED STATES
DEPARTMENT OF THE INTERIOR
BUREAU OF LAND MANAGEMENT

APPLICATION FOR PERMIT TO DRILL, DEEPEN, OR PLUG BACK

1a. TYPE OF WORK

DRILL ☒

DEEPEN ☐

PLUG BACK ☐

b. TYPE OF WELL

OIL
WELL ☐

GAS
WELL ☒

OTHER

SINGLE
ZONE ☒

MULTIPLE
ZONE ☐

2. NAME OF OPERATOR

El Paso Natural Gas Company

3. ADDRESS OF OPERATOR

PO Box 4289, Farmington, NM 87499

4. LOCATION OF WELL (Report location clearly and in accordance with any State requirements*)

At surface

1510'S, 1710'E

At proposed prod. zone

14. DISTANCE IN MILES AND DIRECTION FROM NEAREST TOWN OR POST OFFICE

8 miles south of Gobernador, NM

15. DISTANCE FROM PROPOSED*
LOCATION TO NEAREST
PROPERTY OR LEASE LINE, FT.
(Also to nearest drlg. unit line, if any)

1510'

18. DISTANCE FROM PROPOSED LOCATION*
TO NEAREST WELL, DRILLING, COMPLETED,
OR APPLIED FOR, ON THIS LEASE, FT.

1000'

16. NO. OF ACRES IN LEASE
Unit

19. PROPOSED DEPTH
8070'

17. NO. OF ACRES ASSIGNED
TO THIS WELL
319.16

20. ROTARY OR CABLE TOOLS
Rotary

21. ELEVATIONS (Show whether DF, RT, GR, etc.)

6777'GR, 6787'DF

DRILLING OPERATIONS AUTHORIZED ARE
SUBJECT TO COMPLIANCE WITH ATTACHED
"GENERAL REQUIREMENTS AND CEMENTING PROGRAM"

22. APPROX. DATE WORK WILL START*

This action is subject to administrative
appeal pursuant to 30 CFR 290.

SIZE OF HOLE	SIZE OF CASING	WEIGHT PER FOOT	SETTING DEPTH	QUANTITY OF CEMENT
13 3/4"	9 5/8"	36.0#	200'	212 cf circ. to surface
8 3/4"	7"	20.0#	3915'	292 cf to cover Ojo Alamo
6 1/4"	4 1/2"	11.6#	8070'	639 cf to fill to inter.

Selectively perforate and sand water fracture the Dakota formation.

A 3000 psi WP and 6000 psi test double gate preventer equipped with blind and pipe rams will be used for blow out prevention on this well.

This gas is dedicated.

IN ABOVE SPACE DESCRIBE PROPOSED PROGRAM: If proposal is to deepen or plug back, give data on present productive zone and proposed new productive zone. If proposal is to drill or deepen directionally, give pertinent data on subsurface locations and measured and true vertical depths. Give blowout preventer program, if any.

24.

SIGNED

TITLE Drilling Clerk

DATE 9-26-84

(This space for Federal or State use only)

PERMIT NO.

APPROVAL DATE

APPROVED BY

TITLE

CONDITIONS OF APPROVAL, IF ANY:

OCT 11 1984
OIL CON. DIV.
DIST. 3

*See Instructions On Reverse Side

APPROVED
AS AMENDED

OCT 10 1984

J. Stan McKee

M. MILLENBACH
AREA MANAGER

All distances must be from the outer boundaries of the Section.

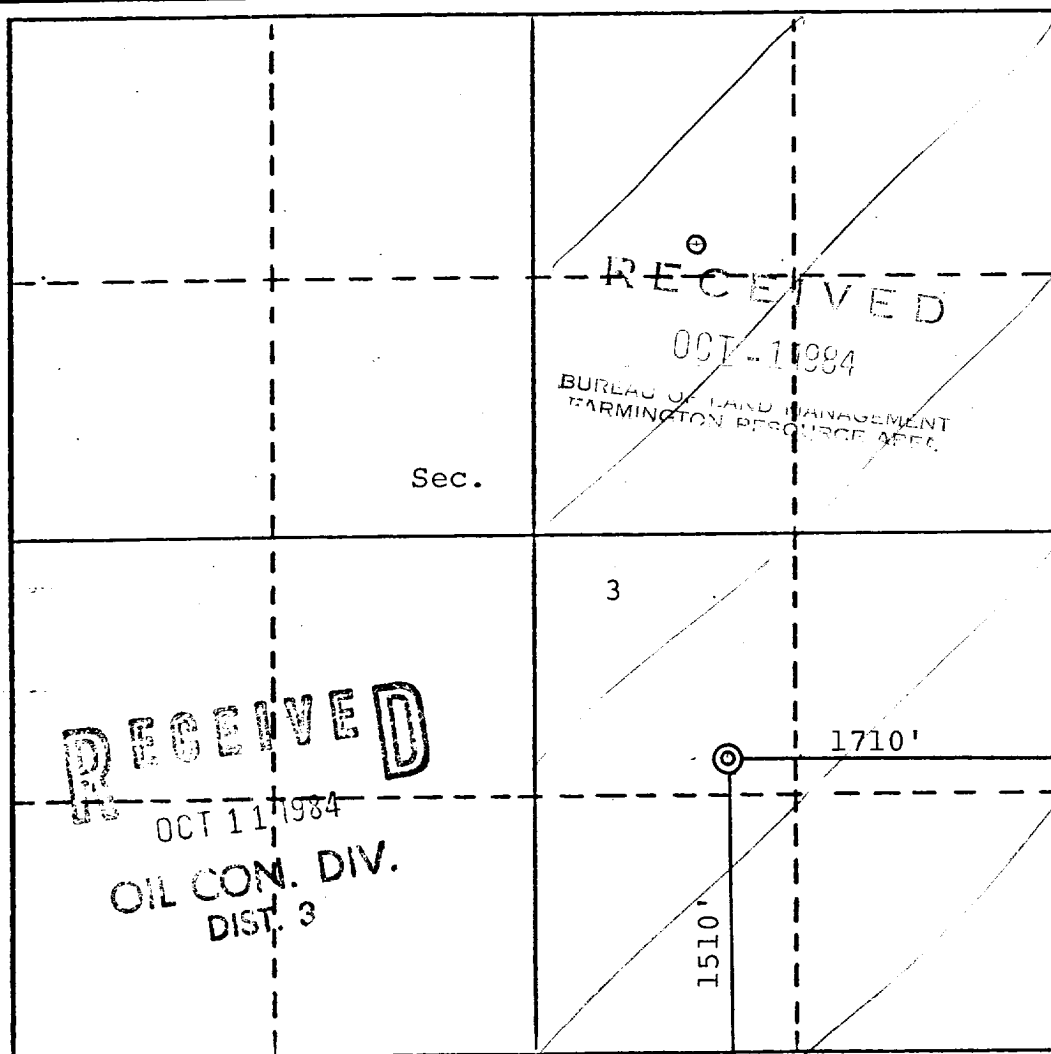
Operator			Lease SAN JUAN 27-5 UNIT (SF-079393)		Well No. 109E
Unit Letter J	Section 3	Township 27N	Range 5W	County Rio Arriba	
Actual Footage Location of Well: 1510 feet from the South line and 1710 feet from the East line					
Ground Level Elev. 6777	Producing Formation Dakota	Pool Basin		Dedicated Acreage: 319.16 Acres	

1. Outline the acreage dedicated to the subject well by colored pencil or hachure marks on the plat below.
2. If more than one lease is dedicated to the well, outline each and identify the ownership thereof (both as to working interest and royalty).
3. If more than one lease of different ownership is dedicated to the well, have the interests of all owners been consolidated by communitization, unitization, force-pooling, etc?

☒ Yes ☐ No If answer is "yes," type of consolidation Unitization

If answer is "no," list the owners and tract descriptions which have actually been consolidated. (Use reverse side of this form if necessary.)

No allowable will be assigned to the well until all interests have been consolidated (by communitization, unitization, forced-pooling, or otherwise) or until a non-standard unit, eliminating such interests, has been approved by the Division.



CERTIFICATION

I hereby certify that the information contained herein is true and complete to the best of my knowledge and belief.

Robert Bradford
Name
Drilling Clerk
Position
El Paso Natural Gas
Company
9-26-84
Date

I hereby certify that the well location shown on this plat was plotted from field notes of actual surveys made by me or under my supervision, and that the same is true and correct to the best of my knowledge and belief.

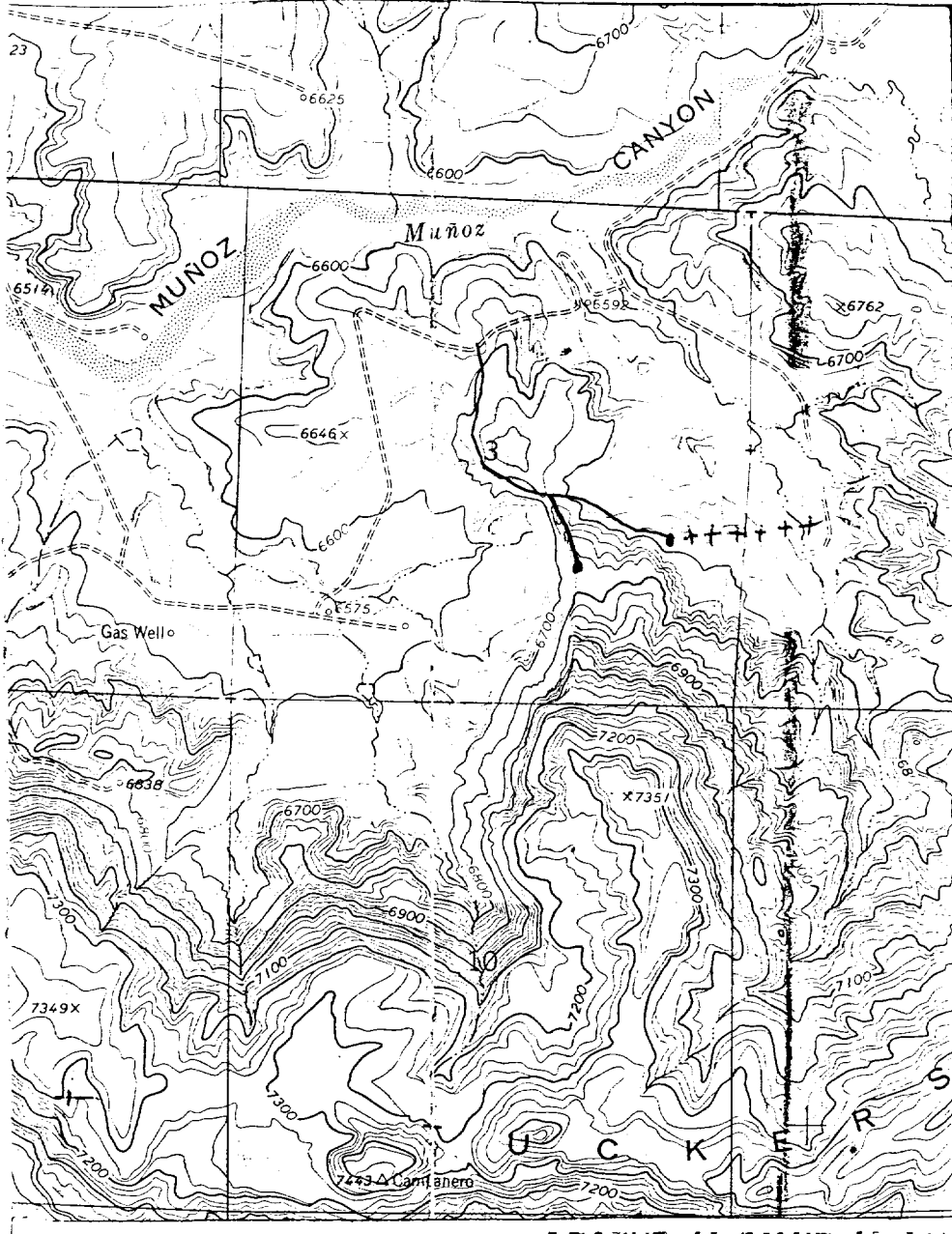
Date Surveyed
September 18, 1984

Registered Professional Engineer
and/or Land Surveyor

David Wilson
Certificate No.
1760

El Paso Natural Gas Company
 San Juan 27-5 Unit #109E
 SE Section 3, T-27-N, R-5-W
 Basin Dakota

R-5-W



T

27

N

LEGEND OF RIGHT-OF-WAYS

EXISTING ROADS

EXISTING PIPELINES

EXISTING ROAD & PIPELINE

PROPOSED ROADS

PROPOSED PIPELINES

PROPOSED ROAD & PIPELINE

— — —

+ + +

— + + —

— — —

+ + +

— + + —

— — —