

**UNITED STATES  
DEPARTMENT OF THE INTERIOR  
BUREAU OF LAND MANAGEMENT**

**APPLICATION FOR PERMIT TO DRILL OR DEEPEEN**

5. LEASE DESIGNATION AND SERIAL NO. **SF -079298 A**

6. IF INDIAN, ALLOTTEE OR TRIBE NAME

7. UNIT AGREEMENT NAME **Rincon Unit**

8. FARM OR LEASE NAME, WELL NO. **Rincon Unit 133R**

9. API WELL NO. **30039 27075**

10. FIELD AND POOL OR WILDCAT **Basin Dakota/ Mesa Verde**

11. SEC., T., R., M., OR BLK. AND SURVEY OR AREA **F Sec. 14, T-27-N, R-7-W**

12. COUNTY OR PARISH **Rio Arriba** 13. STATE **NM**

17. NO. OF ACRES ASSIGNED TO THIS WELL **wp 200 309.06**

20. ROTARY OR CABLE TOOLS **Rotary**

22. APPROX. DATE WORK WILL START **ASAP**

1.a. TYPE OF WORK  
 DRILL  DEEPEEN  **2002 OCT -2 AM 9:41**

b. TYPE OF WELL  
 OIL WELL  GAS WELL  OTHER  SINGLE ZONE  MULTIPLE ZONE  **070 E. BLOOMFIELD, NM**

2. NAME OF OPERATOR **Pure Resources**

3. ADDRESS AND TELEPHONE NO. **P.O. Box 850, Bloomfield New Mexico**

4. LOCATION OF WELL (Report location clearly and in accordance with any State requirement)\*  
 At surface **1951' FNL and 2414' FWL**  
 At proposed prod. zone **Same as Surface**

5. DISTANCE IN MILES AND DIRECTION FROM NEAREST TOWN OR POST OFFICE\* **40 miles Southeast from Bloomfield NM.**

15. DISTANCE FROM PROPOSED LOCATION TO NEAREST PROPERTY OR LEASE LINE FT (Also to nearest drg. Unit line, if any) **1951'**

16. NO. OF ACRES IN LEASE **2645.09**

18. DISTANCE FROM PROPOSED LOCATION TO NEAREST WELL, DRILLING, COMPLETED OR APPLIED FOR, ON THIS LEASE, FT. **1100'**

19. PROPOSED DEPTH **7725**

21. ELEVATIONS (Show whether DF, RT, GR. **6648' GR**

**PROPOSED CASING AND CEMENTING PROGRAM**

SIZE OF HOLE	GRADE, SIZE OF CASING	WEIGHT PER FOOT	SETTING DEPTH	QUANTITY OF CEMENT
12-1/4"	H-40 9-5/8"	32.3#	350'	285 SACKS "B" TOC @ SURFACE
8-3/4"	K-55 7"	20#	2729'	300 SACKS TYPE III TOC @ SURFACE
6-1/4"	N-80 4-1/2"	11.6#	7725'	600 SACKS 65/35 POZ TYPE III TOC TIED INTO
				7" casing

**"Expedited APD/ROW"**

Pure plans to drill the Rincon Unit 133R, and complete in the Mesa Verde and the Basin Dakota and downhole commingle the two formations. This well will be an infill 80 acre.

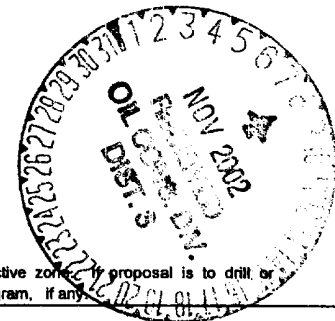
BOP- One double gate BOP with 3-1/2" pipe and blind rams, one choke manifold with adjustable and positive chokes, an accumulator will hydraulically operate BOP with 1 1/2 times the necessary capacity to close the rams and retain a minimum of 200 psi above recharge.

Rotating head will be utilized during the drilling of the 6-1/4" hole.

(Schematics are attached)

This action is subject to technical and procedural review pursuant to 43 CFR 3165.3 and appeal pursuant to 43 CFR 3165.4

DRILLING OPERATIONS AUTHORIZED ARE  
SUBJECT TO COMPLIANCE WITH ATTACHED  
"GENERAL REQUIREMENTS".



IN ABOVE SPACE DESCRIBED PROGRAM: If proposal is to deepen, give data on present productive zone and proposed new productive zone. If proposal is to drill or deepen directionally, give pertinent data on subsurface locations and measured and true vertical depths. Give blowout preventer program, if any.

SIGNED *Mike C. Phillips* TITLE San Juan Basin Area Drig Prod Foreman DATE 10/1/02  
 MIKE C. PHILLIPS

(This space for Federal or State office use)

PERMIT NO. \_\_\_\_\_ APPROVAL DATE \_\_\_\_\_

Application approval does not warrant or certify that the applicant holds legal or equitable title to those rights in the subject lease which would entitle the application to conduct operations thereon. CONDITIONS OF APPROVAL, IF ANY:

APPROVED BY /s/ David J. Mankiewicz TITLE \_\_\_\_\_ DATE NOV - 5

\*See Instructions On Reverse Side

Title 18 U.S.C. Section 1001, make it a crime for any person knowingly and willfully to make to any department or agency of the United States any false, fictitious or fraudulent statements or representations as to any matter within its jurisdiction.

BLOCCD

*m*

DISTRICT I  
1625 N. French Dr., Hobbs, N.M. 88240

State of New Mexico  
Energy, Minerals & Natural Resources Department

Form C-102  
Revised August 15, 2000

DISTRICT II  
811 South First, Artesia, N.M. 88210

Submit to Appropriate District Office  
State Lease - 4 Copies  
Fee Lease - 3 Copies

DISTRICT III  
1000 Rio Brazos Rd., Aztec, N.M. 87410

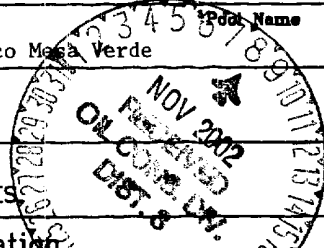
OIL CONSERVATION DIVISION  
2040 South Pacheco  
Santa Fe, NM 87505

DISTRICT IV  
2040 South Pacheco, Santa Fe, NM 87505

AMENDED REPORT

WELL LOCATION AND ACREAGE DEDICATION PLAT

*API Number 30-039- <b>27075</b>		*Pool Code 72319	*Well Name Blanco Mesa Verde	
*Property Code 26629	*Property Name RINCON UNIT			*Well Number 133R
*GRID No. 189071	*Operator Name PURE RESOURCES			*Elevation 6648'



<sup>10</sup> Surface Location

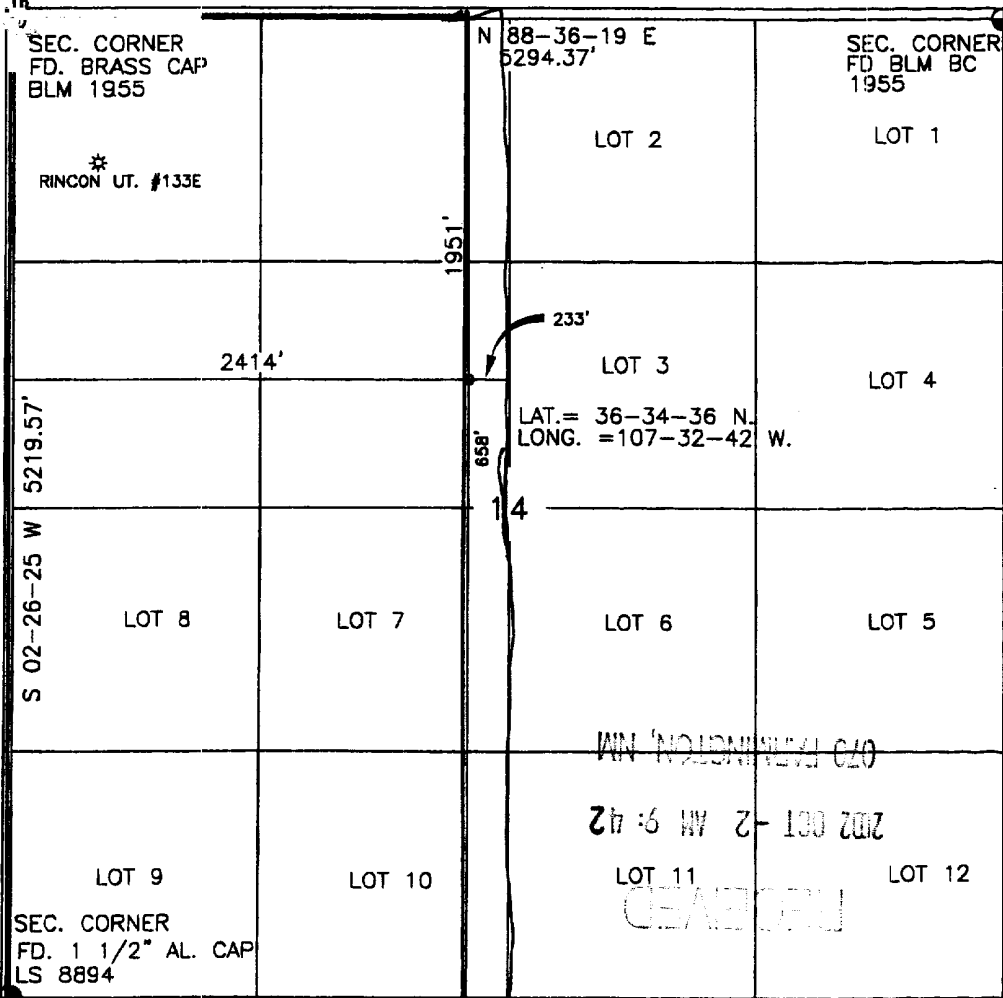
UL or lot no.	Section	Township	Range	Lot Idn	Feet from the	North/South line	Feet from the	East/West line	County
F	14	27-N	7-W		1951'	NORTH	1202'	WEST	RIO ARRIBA

<sup>11</sup> Bottom Hole Location If Different From Surface

UL or lot no.	Section	Township	Range	Lot Idn	Feet from the	North/South line	Feet from the	East/West line	County

<sup>12</sup> Dedicated Acres <b>3.09.06</b>	<sup>13</sup> Joint or Infill	<sup>14</sup> Consolidation Code	<sup>15</sup> Order No.
---	-------------------------------	----------------------------------	-------------------------

NO ALLOWABLE WILL BE ASSIGNED TO THIS COMPLETION UNTIL ALL INTERESTS HAVE BEEN CONSOLIDATED OR A NON-STANDARD UNIT HAS BEEN APPROVED BY THE DIVISION



**17 OPERATOR CERTIFICATION**  
I hereby certify that the information contained herein is true and complete to the best of my knowledge and belief.

*Mike Phillips*  
Signature

Mike Phillips  
Printed Name

San Juan Basin Drilling/  
Production Foreman  
Title

Sept. 30th, 2002  
Date

**18 SURVEYOR CERTIFICATION**  
I hereby certify that the well location shown on this plat was plotted from field notes of actual surveys made by me or under my supervision, and that the same is true and correct to the best of my ability.

DAVID A. JOHNSON  
NEW MEXICO  
REGISTERED PROFESSIONAL SURVEYOR  
14827

MAY 21  
Date of Survey

Signature and Seal of Professional Surveyor

14827  
Certificate Number

DISTRICT I  
1625 N. French Dr., Hobbs, N.M. 88240

State of New Mexico  
Energy, Minerals & Natural Resources Department

Form C-102  
Revised August 15, 2000

DISTRICT II  
811 South First, Artesia, N.M. 88210

Submit to Appropriate District Office  
State Lease - 4 Copies  
Fee Lease - 3 Copies

DISTRICT III  
1000 Rio Brazos Rd., Artec, N.M. 87410

OIL CONSERVATION DIVISION  
2040 South Pacheco  
Santa Fe, NM 87505

DISTRICT IV  
2040 South Pacheco, Santa Fe, NM 87505

AMENDED REPORT

WELL LOCATION AND ACREAGE DEDICATION PLAT

<sup>1</sup> API Number 30-039- 27075		<sup>2</sup> Pool Code 71599	<sup>3</sup> Pool Name Basin Dakota
<sup>4</sup> Property Code 26629	<sup>5</sup> Property Name RINCON UNIT		<sup>6</sup> Well Number 133R
<sup>7</sup> OGRID No. 189071	<sup>8</sup> Operator Name PURE RESOURCES		<sup>9</sup> Elevation 6648'


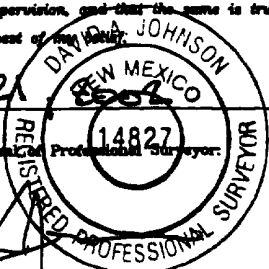
<sup>10</sup> Surface Location

UL or lot no.	Section	Township	Range	Lot Idn	Feet from the	North/South line	Feet from the	East/West line	County
F	14	27-N	7-W		1951'	NORTH	2414'	WEST	RIO ARRIBA

<sup>11</sup> Bottom Hole Location If Different From Surface

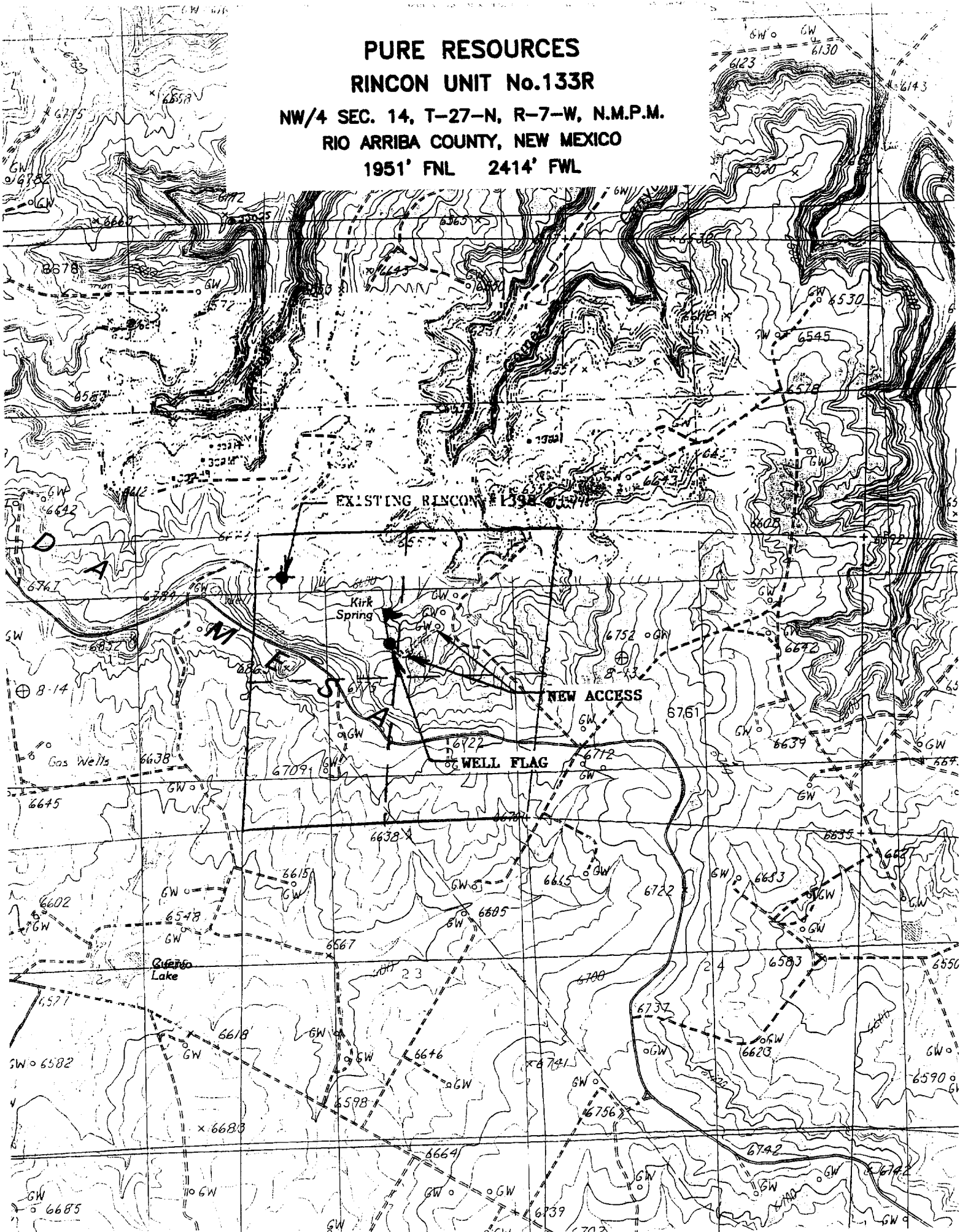
UL or lot no.	Section	Township	Range	Lot Idn	Feet from the	North/South line	Feet from the	East/West line	County
<sup>12</sup> Dedicated Acres 320			<sup>13</sup> Joint or Infill		<sup>14</sup> Consolidation Code		<sup>15</sup> Order No.		

NO ALLOWABLE WILL BE ASSIGNED TO THIS COMPLETION UNTIL ALL INTERESTS HAVE BEEN CONSOLIDATED OR A NON-STANDARD UNIT HAS BEEN APPROVED BY THE DIVISION

SEC. CORNER FD. BRASS CAP BLM 1955  * RINCON UT. #133E	N 88-36-19 E 5294.37'		SEC. CORNER FD BLM BC 1955		<b>17 OPERATOR CERTIFICATION</b> I hereby certify that the information contained herein is true and complete to the best of my knowledge and belief.   Signature  Mike Phillips Printed Name San Juan Basin Drilling/ Production Foreman Title  Sept. 30th, 2002 Date
	LOT 2		LOT 1		
	2414'		233'		
	5219.57'		658'		
S 02-26-25 W		14		<b>18 SURVEYOR CERTIFICATION</b> I hereby certify that the well location shown on this plat was plotted from field notes of actual surveys made by me or under my supervision, and that the same is true and correct to the best of my belief.  MAY 21 Date of Survey Signature and Seal of Registered Professional Surveyor.  14827 Certificate Number	
LOT 8		LOT 7		LOT 6	
LOT 9		LOT 10		LOT 11	
SEC. CORNER FD. 1 1/2" AL. CAP LS 8894		LAT. = 36-34-36 N. LONG. = 107-32-42 W.		LOT 5	
LOT 12		LOT 4		LOT 3	

# PURE RESOURCES RINCON UNIT No.133R

NW/4 SEC. 14, T-27-N, R-7-W, N.M.P.M.  
RIO ARriba COUNTY, NEW MEXICO  
1951' FNL 2414' FWL



**PURE RESOURCES  
RINCON UNIT WELL NO. 133R  
1951' FNL, 2414' FWL, SEC. 14, T-27-N, R-7-W**

**8 POINT DRILLING PLAN**

1. **ESTIMATED FORMATION TOPS**

<b><u>FORMATION NAME</u></b>	<b><u>DEPTH FROM GL</u></b>
San Jose	Surface
Ojo Alamo	2,274'
Kirtland Shale	2,619'
Pictured Cliffs	3,201'
Cliff House	4,894'
Point Lookout	5,459'
Mancos	5,846'
Tocito Sand	6,995'
Dakota	7,609'
ETD	7,721'
Permit TD	7,725'

2. **OIL, GAS, WATER, OR OTHER MINERAL BEARING ZONES**

<b><u>EXPECTED GAS ZONES</u></b>	<b><u>DEPTH FROM GL</u></b>
Fruitland Coal	3115'-3201'
Pictured Cliffs	3201-3292'
Mesa Verde	4894-5846
Dakota	7609-7721'

<b><u>EXPECTED WATER ZONES</u></b>	<b><u>DEPTH FROM GL</u></b>
Ojo Alamo	2274'

Possible water zones will be protected by 7" intermediate casing and/or 4-1/2" production strings, 7" cemented to surface, and 4-1/2" casing cement tied in to 7".

3. **PRESSURE CONTROL BOP'S AND RELATED EQUIPMENT**

Casing Head: 7" x 11" – 3000 psi W.P.

BOP Stack and Related Equipment: (See Attachment No. 1 &2).

**RINCON UNIT WELL NO. 133R  
DRILLING PROGRAM – PAGE 2**

One double-gate BOP with 4-1/2” and then 3-1/2” pipe and blind rams.

One choke manifold with adjustable and positive chokes.

An accumulator will hydraulically operate the BOP with 1-1/2 times the necessary capacity to close the rams and retain a minimum of 200psi above recharge. The remote unit will be located in the bottom “dog house” or on the ground between the “dog house” and the toolpushers trailer. A rotating head on top of the BOP stack will be utilized when necessary.

Testing Procedure:

The BOP and related equipment will be tested in accordance with the provisions of Onshore Oil and Gas Order No. 2.

BOP’s will be operationally tested daily and each test will be logged in the IADC Daily Drilling Report.

Bloolie Line:

The bloolie line and related equipment will meet all requirements of Onshore Oil and Gas Order No. 2.

4. CASING AND CEMENTINNG PROGRAM

SURFACE CASING (Spud Mud)

<u>Age</u>	<u>Depth</u>	<u>Hole Size</u>	<u>Size</u>	<u>Weight</u>	<u>Grade</u>	<u>Thread</u>
New	0-350’	12-1/4”	9-5/8”	32.3#	H-40	ST&C

INTERMEDIATE CASING (FW Mud)

<u>Age</u>	<u>Depth</u>	<u>Hole Size</u>	<u>Size</u>	<u>Weight</u>	<u>Grade</u>	<u>Thread</u>
New	0-2729’	8-3/4”	7”	20#	K-55	ST&C

PRODUCTION CASING (Air Dusting)

<u>Age</u>	<u>Depth</u>	<u>Hole Size</u>	<u>Size</u>	<u>Weight</u>	<u>Grade</u>	<u>Thread</u>
New	0-TD	6-1/4”	4-1/2”	11.6#	L-80	LT&C

MINIMUM SAFETY FACTORS

Collapse: 1.125

Tension: 1.8

Burst: 1.0

**RINCON UNIT WELL NO. 133R**  
**DRILLING PROGRAM – PAGE 3**

**Cementing Program**

1. The 9-5/8” surface casing will be cemented to the surface with 285 sacks of class “B” cement + 2 Cacl2 and ¼# per cello flake. 14.5ppg
2. The 7” intermediate casing will be cemented to surface with; 300 sacks of type III (35:65) Poz cement + 8% gel + 2% CACL2, + 6.25#/sack Gilsonite, .25 lbs/sk Cello Flake @ 12.1 ppg , Followed by 50 sacks class “B” cement + 2% CACL2 + ¼ #/sack cello-flake. @ 14.5 ppg.
3. The 4-1/2” production casing will be cemented and tied into the intermediate casing with 600 sacks 65/35 Poz Type III cement + ¼ #/sack CF, 6% gel, 10#/sack CSE + 3% KCL, FL-62 + .2% CD-32, @ 12.5 ppg.

Casing hardware for the production string to include guide shoe, float collar, centralized shoe joint and next five joints. Centralizers across producing zones.

**Auxiliary Equipment**

A kelly cock will be used with handle available. A full opening safety valve will be used when Kelly is out of string. Rotating head while air drilling. Will have vacuum diversion on blooie line.

5. **DRILLING FLUID PROGRAM**

<u>Depth</u>	<u>Type</u>	<u>Weight</u>	<u>Vis</u>	<u>W.L.</u>
0-350'	Spud Mud			N.C.
350-2729'	Fresh Water Gel	8.3-8.6	30-35	N.C.
2729'-TD	Air	N.C.	N.C.	N.C.