

*File Cards & Label*

SUBMIT IN TRIPLICATE\*  
(Other instructions on reverse side)

Form approved.  
Budget Bureau No. 42-R1425.

UNITED STATES  
DEPARTMENT OF THE INTERIOR  
GEOLOGICAL SURVEY

5. LEASE DESIGNATION AND SERIAL NO.

SF 078384

6. IF INDIAN, ALLOTTEE OR TRIBE NAME

7. UNIT AGREEMENT NAME

8. FARM OR LEASE NAME

Newsom #8

9. WELL NO.

12

10. FIELD AND POOL, OR WILDCAT

Basin Dakota

11. SEC., T., R., M., OR BLK.  
AND SURVEY OR AREA

Sec. 17, T-26 North,  
R-8 West, N.M.P.M.

12. COUNTY OR PARISH 13. STATE

SAN JUAN

NEW MEXICO

1a. TYPE OF WORK

DRILL ☒

DEEPEN ☐

PLUG BACK ☐

b. TYPE OF WELL

OIL  
WELL ☐

GAS  
WELL ☒

OTHER

SINGLE  
ZONE ☒

MULTIPLE  
ZONE ☐

2. NAME OF OPERATOR

SOUTHERN UNION PRODUCTION COMPANY

3. ADDRESS OF OPERATOR

P. O. Box 808, Farmington, New Mexico 87401

4. LOCATION OF WELL (Report location clearly and in accordance with any State requirements.)\*

At surface

1835 FT. FROM NORTH LINE & 1780 FT. FROM EAST LINE

At proposed prod. zone

SAME AS ABOVE

14. DISTANCE IN MILES AND DIRECTION FROM NEAREST TOWN OR POST OFFICE\*

26 MILES SOUTH OF BLOOMFIELD, NEW MEXICO

15. DISTANCE FROM PROPOSED\*

LOCATION TO NEAREST

PROPERTY OR LEASE LINE, FT.  
(Also to nearest drlg. unit line, if any)

1780 FT.

16. NO. OF ACRES IN LEASE

2560

18. DISTANCE FROM PROPOSED LOCATION\*

TO NEAREST WELL, DRILLING, COMPLETED,  
OR APPLIED FOR, ON THIS LEASE, FT.

150 FT.

19. PROPOSED DEPTH

6750 FT.

17. NO. OF ACRES ASSIGNED  
TO THIS WELL

320

20. ROTARY OR CABLE TOOLS

ROTARY

21. ELEVATIONS (Show whether DF, RT, GR, etc.)

6347 FT. UNGRADED GROUND LEVEL

22. APPROX. DATE WORK WILL START\*

OCTOBER 12, 1966

23. PROPOSED CASING AND CEMENTING PROGRAM

SIZE OF HOLE	SIZE OF CASING	WEIGHT PER FOOT	SETTING DEPTH	QUANTITY OF CEMENT
12-1/4"	8-5/8"	24.0	300 FT.	250 BAGS
7-7/8"	4-1/2"	10.5	6750 FT.	1000 CU. FT.

WE PROPOSE TO DRILL A DAKOTA WELL. ANTICIPATED TOTAL DEPTH 6750 FT.

- CASING PROGRAM:** SURFACE: 8-5/8", 24.0#, J-55 SET AT 300 FT. CEMENTED W/250 BX.  
PRODUCTION: 4-1/2", 10.50#, J-55 SET AT TOTAL DEPTH OF 6750 FT. R.K.B.  
1ST STAGE CEMENTED W/400 CU. FT. GEMT; STAGE COLLAR SET  
AT APPROX. 4700 FT. UNDER MESAVERDE. CEMENTED W/400 CU.FT.  
GEMT; STAGE COLLAR SET UNDER PICTURED CLIFFS AT 2200 FT.  
AND CEMENTED W/1000 CU. FT. CEMENT.
- ROTARY TOOLS WILL BE USED TO MUD DRILL WELL FROM SURFACE TO TOTAL DEPTH.
- WELL WILL BE SAND FRACED TO STIMULATE PRODUCTION.
- 1-1/2", E.U.E., 2.90#, JCH TUBING WILL BE SET AT APPROX. 6650 FT. R.K.B.

IN ABOVE SPACE DESCRIBE PROPOSED PROGRAM: If proposal is to deepen or plug back, give data on present productive zone and proposed new productive zone. If proposal is to drill or deepen directionally, give pertinent data on subsurface locations and measured and true vertical depths. Give blowout preventer program, if any.

24. Original signed by  
GILBERT D. NOLAND, JR.  
SIGNED GILBERT D. NOLAND, JR.  
(This space for Federal or State office use)

TITLE DRILLING SUPERINTENDENT

DATE OCTOBER 5, 1966

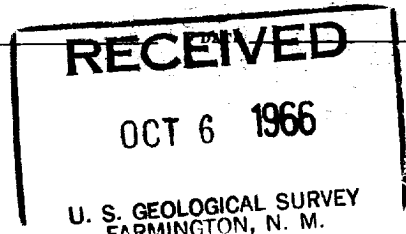
PERMIT NO. \_\_\_\_\_

APPROVAL DATE \_\_\_\_\_

APPROVED BY \_\_\_\_\_  
CONDITIONS OF APPROVAL, IF ANY:

TITLE \_\_\_\_\_

\*See Instructions On Reverse Side



## Instructions

**General:** This form is designed for submitting proposals to perform certain well operations, as indicated, on all types of lands and leases for appropriate action by either a Federal or a State agency, or both, pursuant to applicable Federal and/or State laws and regulations. Any necessary special instructions concerning the use of this form and the number of copies to be submitted, particularly with regard to local, area, or regional procedures and practices, either are shown below or will be issued by, or may be obtained from, the local Federal and/or State office.

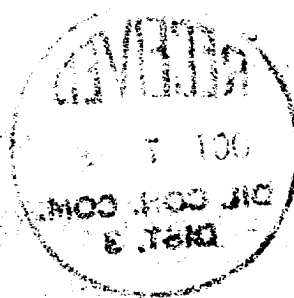
**Item 1:** If the proposal is to redrill to the same reservoir at a different subsurface location or to a new reservoir, use this form with appropriate notations. Consult applicable State or Federal regulations concerning subsequent work proposals or reports on the well.

**Item 4:** If there are no applicable State requirements, locations on Federal or Indian land should be described in accordance with Federal requirements. Consult local State or Federal office for specific instructions.

**Item 14:** Needed only when location of well cannot readily be found by road from the land or lease description. A plat, or plats, separate or on this reverse side, showing the roads to, and the surveyed location of, the well, and any other required information, should be furnished when required by Federal or State agency offices.

**Items 15 and 18:** If well is to be, or has been directionally drilled, give distances for subsurface location of hole in any present or objective production zone.

**Item 22:** Consult applicable Federal or State regulations, or appropriate officials, concerning approval of the proposal before operations are started.



**NEW MEXICO OIL CONSERVATION COMMISSION  
WELL LOCATION AND ACERAGE DEDICATION PLAT**

All distances must be from the outer boundaries of the Section

Operator <b>SOUTHERN UNION PRODUCTION COMPANY</b>		Lease <b>NEWSOM B</b>		Well No. <b>12</b>
Unit Letter <b>G</b>	Section <b>17</b>	Township <b>26 NORTH</b>	Range <b>8 WEST</b>	County <b>SAN JUAN</b>
Actual Footage Location of Well: <b>1835</b> feet from the <b>NORTH</b> line and <b>1780</b> feet from the <b>EAST</b> line				
Ground Level Elev. <b>6347.0</b>	Producing Formation <b>DARKEA</b>	Pool <b>BASIN DARKEA</b>	Dedicated Acreage: <b>320</b>	Acres

1. Outline the acreage dedicated to the subject well by colored pencil or hachure marks on the plat below.
2. If more than one lease is dedicated to the well, outline each and identify the ownership thereof (both as to working interest and royalty),
3. If more than one lease of different ownership is dedicated to the well, have the interests of all owners been consolidated by communitization, unitization, force-pooling, etc?

( ) Yes ( ) No If answer is "yes," type of consolidation .....

If answer is "no," list the owners and tract descriptions which have actually consolidated this form if necessary: .....

No deductions will be assigned to the well until all interests have been consolidated (by communitization, unitization, forced-pooling, or otherwise) or until a non standard unit, eliminating such interests, has been approved by the Commission.

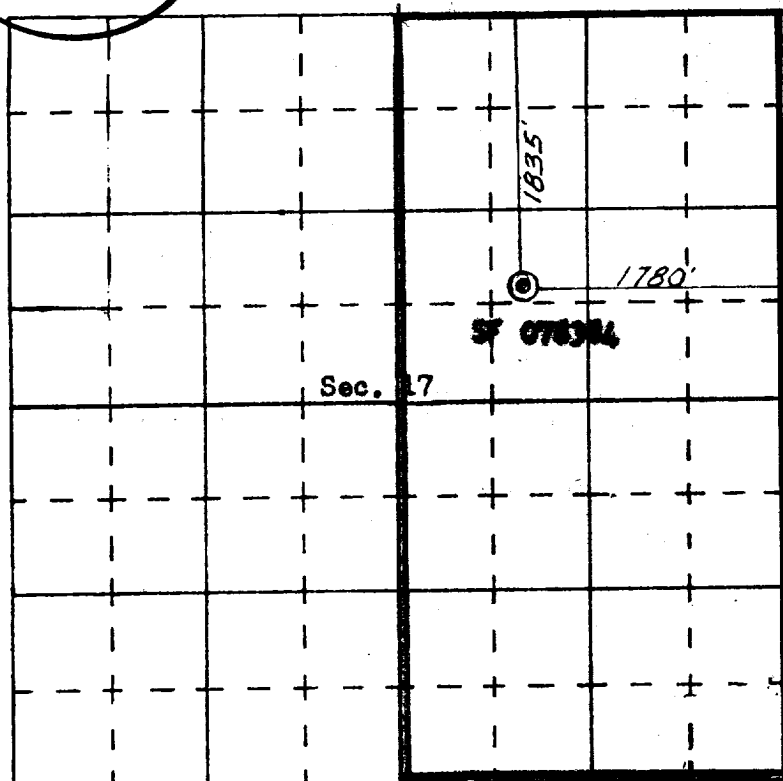
**RECEIVED**

**OCT 6 1966**

U. S. GEOLOGICAL SURVEY  
FARMINGTON, N. M.

**RECEIVED**

**OCT 7 1966  
OIL CON. COM.  
DIST. 3**



SCALE—4 INCHES EQUALS 1 MILE

SAN JUAN ENGINEERING COMPANY, FARMINGTON, N. M.

**CERTIFICATION**

I hereby certify that the information contained herein is true and complete to the best of my knowledge and belief.

Original signed by  
**GILBERT D. NOLAND, JR.**  
Name **GILBERT D. NOLAND, JR.**  
**DRILLING SUPERINTENDENT**

Position  
**SOUTHERN UNION PRODUCTION CO.**

Company  
**OCTOBER 5, 1966**

Date

I hereby certify that the well location shown on this plat was plotted from field notes of actual surveys made by me or under my supervision, and that the same is true and correct to the best of my knowledge and belief.

**September 15, 1966**  
Date Surveyed

**JAMES L. ...**  
Professional Engineer  
and/or Land Surveyor  
**146**  
Certificate No.