

UNITED STATES
DEPARTMENT OF THE INTERIOR
GEOLOGICAL SURVEY

APPLICATION FOR PERMIT TO DRILL, DEEPEN, OR PLUG BACK

1a. TYPE OF WORK

DRILL ☒DEEPEN ☐PLUG BACK ☐

b. TYPE OF WELL

OIL
WELL ☐GAS
WELL ☒

OTHER

SINGLE
ZONE ☒MULTIPLE
ZONE ☐

2. NAME OF OPERATOR

DOME PETROLEUM CORP.

3. ADDRESS OF OPERATOR

501 Airport Drive,

Suite 107, Farmington, New Mexico 87401

4. LOCATION OF WELL (Report location clearly and in accordance with any State requirements.)*

At surface 1520' FSL, 1520' FEL

At proposed prod. zone

14. DISTANCE IN MILES AND DIRECTION FROM NEAREST TOWN OR POST OFFICE*

20 miles South of Farmington, New Mexico

15. DISTANCE FROM PROPOSED*

LOCATION TO NEAREST
PROPERTY OR LEASE LINE, FT.
(Also to nearest drig. unit line, if any)18. DISTANCE FROM PROPOSED LOCATION*
TO NEAREST WELL, DRILLING, COMPLETED,
OR APPLIED FOR, ON THIS LEASE, FT.

16. NO. OF ACRES IN LEASE

319.81

19. PROPOSED DEPTH

1500'

17. NO. OF ACRES ASSIGNED
TO THIS WELL

160

20. ROTARY OR CABLE TOOLS

Rotary

22. APPROX. DATE WORK WILL START*

May 20, 1980

23.

PROPOSED CASING AND CEMENTING PROGRAM

SIZE OF HOLE	SIZE OF CASING	WEIGHT PER FOOT	SETTING DEPTH	QUANTITY OF CEMENT
12 1/4"	8 5/8"	32.3#	100'	75 sacks (circulated)
6 3/4"	4 1/2"	10.5#	1500'	200 sacks (circulated)

Move in rotary tools. Drill 12 1/4" hole to 100'. Set 100' new 8 5/8" K55 casing. Cement with 75 sx class "B" cement with 2% CaCl. Wait on cement 12 hrs. Install 3000# test regan type K blowout preventer. Test to 500 psi before drilling out from under surface pipe. Check rams daily. Drill 6 3/4" hole to TD. The geologic name of the surface formation is Ojo Aumo. Gas is expected in the Pictured Cliff. All other formations are probably water bearing. Pertinent formation tops are estimated as Kirtland 150', Fruitland 940' and Pictured Cliff 1320'. Mud system will be low solids non dispersed. Mud weight 8.8-9.2#/gal. Fluid loss 8-10 cc, Viscosity 30-50 sec./quart. No abnormal temperatures or pressures are anticipated. Logging program will be DIL, FDC/CNL/Gr with caliper log. If productive 4 1/2", 10.5#, K55 casing will be run and cemented with 150 sacks 65/35 Pozmix with 6% gel and 10# Gilsonite/sx. Followed with 50 sx class "B" cement with 2% CaCl. Drilling should require approximately 7 days.

IN ABOVE SPACE DESCRIBE PROPOSED PROGRAM: If proposal is to deepen or plug back, give data on present productive zone and proposed new productive zone. If proposal is to drill or deepen directionally, give pertinent data on subsurface locations and measured and true vertical depths. Give blowout preventer program, if any.

24.

SIGNED

H. D. HOLLINGSWORTH

(This space for Federal or State office use)

TITLE Drlg. & Prod. Foreman

PERMIT NO.

APPROVAL DATE

APPROVED BY

CONDITIONS OF APPROVAL, IF ANY:

TITLE

NMOC

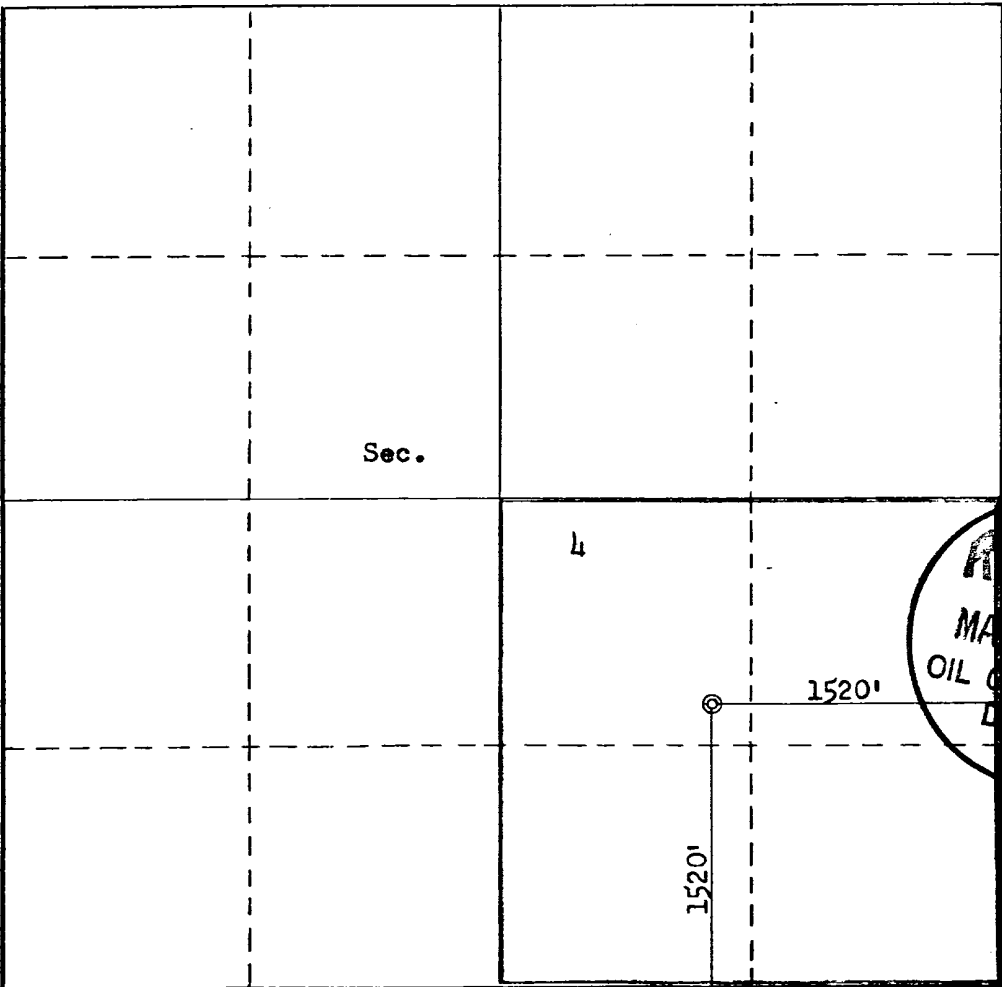
APPROVED
AS AMENDEDMAY 23 1980
JAMES F. SIMS
DISTRICT ENGINEER

OIL CONSERVATION DIVISION

STATE OF NEW MEXICO
ENERGY AND MINERALS DEPARTMENTP. O. BOX 2088
SANTA FE, NEW MEXICO 87501Form C-102
Revised 10-1-78

All distances must be from the outer boundaries of the Section.

Operator DOMESTIC PETROLEUM CORPORATION			Lease ROSS-FEDERAL 4-26-13		Well No. 2
Unit Letter J	Section 4	Township 26N	Range 13W	County San Juan	
Actual Footage Location of Well: 1520 feet from the South line and 1520 feet from the East line					
Ground Level Elev. 6223	Producing Formation PC		Pool WAW FRUITLAND-PICTURED CLIFF	Dedicated Acreage: 160 Acres	
<p>1. Outline the acreage dedicated to the subject well by colored pencil or hatchure marks on the plat below.</p> <p>2. If more than one lease is dedicated to the well, outline each and identify the ownership thereof (both as to working interest and royalty).</p> <p>3. If more than one lease of different ownership is dedicated to the well, have the interests of all owners been consolidated by communitization, unitization, force-pooling, etc?</p> <p><input type="checkbox"/> Yes <input type="checkbox"/> No If answer is "yes," type of consolidation _____</p> <p>If answer is "no," list the owners and tract descriptions which have actually been consolidated. (Use reverse side of this form if necessary.) _____</p> <p>No allowable will be assigned to the well until all interests have been consolidated (by communitization, unitization, forced-pooling, or otherwise) or until a non-standard unit, eliminating such interests, has been approved by the Commission.</p>					

	CERTIFICATION I hereby certify that the information contained herein is true and complete to the best of my knowledge and belief. <i>H. D. Hollingsworth</i> Name H. D. HOLLINGSWORTH Position DRILL & PROD. FOREMAN Company DOMESTIC PETROLEUM CORP. Date April 18, 1980
	RECEIVED MAY 13 1980 OIL CON. COM. DIST. 3 I hereby certify that the well location shown on this plat was plotted from field notes of actual surveys made by me or under my supervision, and that the same is true and correct to the best of my knowledge and belief. Date Surveyed April 16, 1980 Registered Professional Engineer and/or Land Surveyor <i>Fred B. Kerr Jr.</i> Fred B. Kerr Jr. Certification No. 3950



DOME PETROLEUM CORP.

SUITE 1400, COLORADO STATE BANK BLDG.

1600 BROADWAY

DENVER, COLORADO 80202

TELEPHONE
(303) 861-1230

DEVELOPMENT PLAN FOR SURFACE USE

Ross Federal 4-26-13 #2
1520' FSL, 1520' FEL
Sec. 4, T26N, R13W
San Juan County, New Mex.

1. EXISTING ROADS

The main road to the location is that from Farmington toward Bisti (Bisti highway) leaving this road approx. 14 miles south of Farmington and using existing side roads to the location.

2. PLANNED ACCESS ROAD

The access road, to be routed as shown on the attached map, will be 18' wide with adequate ditch and water bars.

3. EXISTING WELLS

Existing wells within one mile of location are shown on the attached topographic map.

4. LOCATION OF PROPOSED FACILITIES

Development of commercial gas production will require separation facilities on the location pad. Equipment and pits will be fenced as required for protection of livestock and wildlife. Above ground facilities will be painted brown or grey to blend in with the surrounding area as specified by the BLM. The disturbed areas no longer needed for operations after well completion will be restored to natural contour and reseeded.

5. LOCATION AND TYPE OF WATER SUPPLY

To be hauled from El Paso Natural Gas Co. water pit at Chaco Gas Plant, approximately 6 miles east.

6. SOURCE OF CONSTRUCTION MATERIALS

Not applicable.

7. METHOD OF HANDLING WASTE MATERIAL

All garbage and trash that can be burned shall be burned. All trash that cannot be burned will be contained in a trash pit and covered with a minimum of 24 inches of dirt. All drilling waste such as cuttings, overflows of oil, water and drilling fluids will be contained in the reserve pit and buried with adequate cover upon completion of operations. The reserve pit will be fenced until cleanup operations are commenced. Toilet facilities will be provided.

8. ANCILLARY FACILITIES

No camps or airstrips are proposed for this location.

9. WELL SITE LAYOUT

See attached diagram.

10. PLANS FOR RESTORATION OF SURFACE

Cleanup of the location will commence immediately following the removal of the drilling equipment. The reserve pit will be fenced until restoration operations are commenced. The location will be returned to original contour if the well is not productive. Both the road and location will be reseeded in accordance with BLM specifications.

11. OTHER INFORMATION

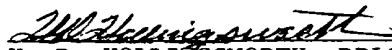
Topography consists of rolling hills with very sandy soil. Vegetation is composed of Snake Weed, Mormon Tea, Yucca, Prickly Pear and Blue Gramma.

12. LEASEE'S OR OPERATOR'S REPRESENTATIVE

Dome Petroleum Corp.
H. D. Hollingsworth
501 Airport Drive, Suite 107
Farmington, New Mexico 87401
Phone: 505-325-2897 Office
505-327-1548 Home

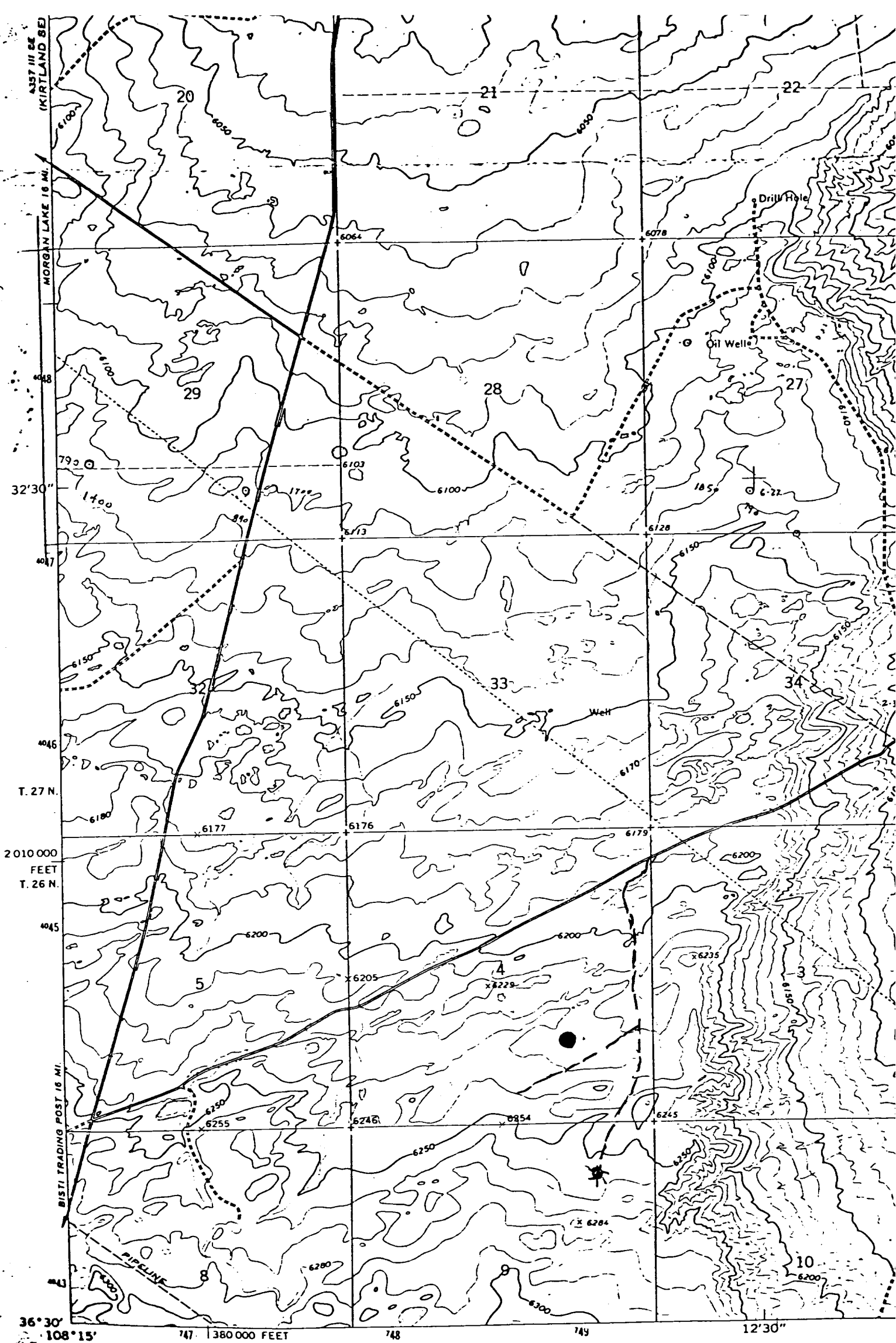
13. CERTIFICATION

I hereby certify that I, or persons under my direct supervision, have inspected the proposed drill site and access route; that I am familiar with the conditions which presently exist; that the statements made in the plan are, to the best of my knowledge, true and correct; and that the work associated with the operations proposed herein will be performed by Dome Petroleum Corporation and its contractors and subcontractors in conformity with this plan and the terms and conditions under which it is approved.


H. D. HOLLINGSWORTH, DRLG. & PROD. FOREMAN
Dome Petroleum Corporation

April 21, 1980

HDH/ig



Mapped, edited, and published by the Geological Survey

Control by USGS, USC&GS,

Topography by photogrammetric
photographs taken 1964 and
Bureau of Reclamation 196

Polyconic projection, 1927

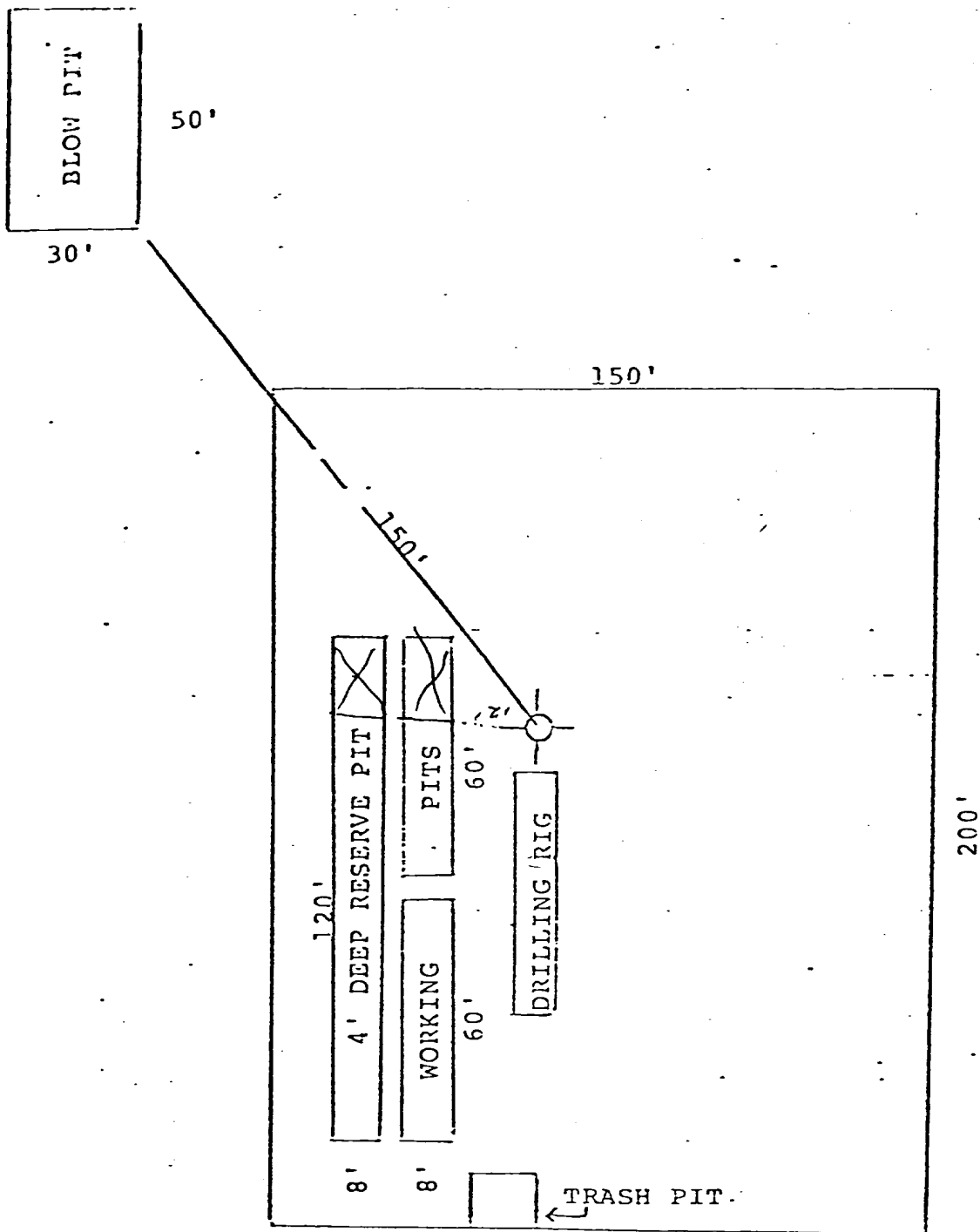
10,000 foot grid based on New Mexico coordinate system,
west zone

1000 meter Universal Transverse Mercator grid ticks,
zone 12, shown in blue

Vicinity Map for
DOME PETROLEUM CORP. #2 ROSS-FEDERAL 4-26-13
1520'FSL 1520'FEL Sec 4-T26N-R13W
SAN JUAN COUNTY, NEW MEXICO

30 MILES

UTM GRID AND 1983 MAGNETIC NORTH

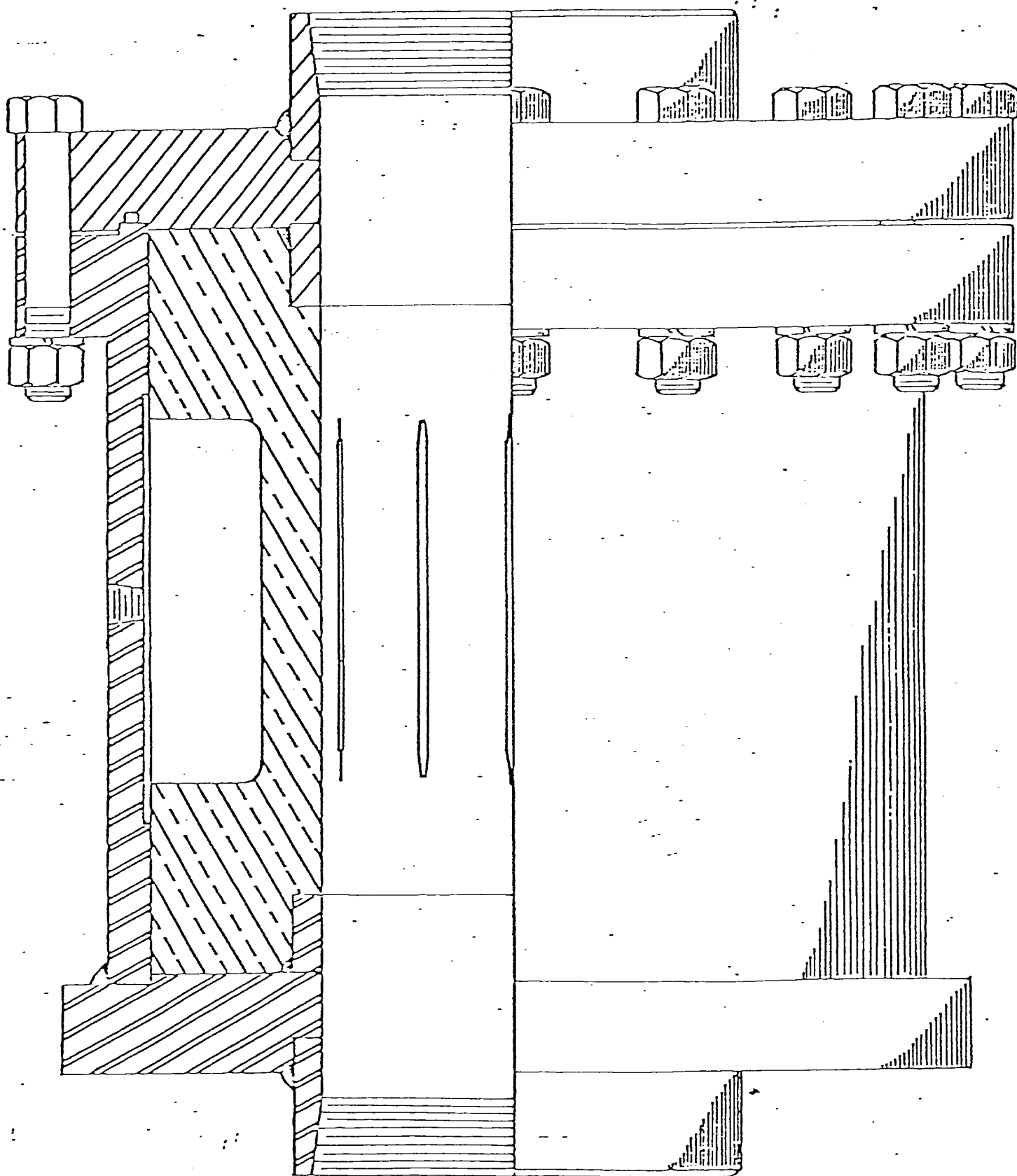


DOME PETROLEUM CORP.

SUITE 1500, COLORADO STATE BANK BLDG.

1600 BROADWAY

DENVER, COLORADO 80202



3000 PSI API WORKING PRESSURE

SCHEMATIC DIAGRAM OF THE 1000 SERIES WELLHEAD