

UNITED STATES
DEPARTMENT OF THE INTERIOR
GEOLOGICAL SURVEY

APPLICATION FOR PERMIT TO DRILL, DEEPEN, OR PLUG BACK

1a. TYPE OF WORK

DRILL ☒DEEPEN ☐PLUG BACK ☐

b. TYPE OF WELL

OIL
WELL ☐GAS
WELL ☒OTHER ☐SINGLE
ZONE ☒MULTIPLE
ZONE ☐

2. NAME OF OPERATOR

Veryl F. Moore

3. ADDRESS OF OPERATOR

2605 Highland Pl., Farmington, New Mexico 87401

4. LOCATION OF WELL (Report location clearly and in accordance with any State requirements.)

At surface

1805' FNL & 1495' FEL

At proposed prod. zone Same

14. DISTANCE IN MILES AND DIRECTION FROM NEAREST TOWN OR POST OFFICE*

11 miles NE of Blanco Trading Post

15. DISTANCE FROM PROPOSED*

LOCATION TO NEAREST

PROPERTY OR LEASE LINE, FT.

(Also to nearest drlg. unit line, if any)

1495'

18. DISTANCE FROM PROPOSED LOCATION*

TO NEAREST WELL, DRILLING, COMPLETED,

OR APPLIED FOR, ON THIS LEASE, FT.

1100'

21. ELEVATIONS (Show whether DF, RT, GR, etc.)

6965' GL

5. LEASE DESIGNATION AND SERIAL NO.

NM 02901

6. IF INDIAN, ALLOTTEE OR TRIBE NAME

7. UNIT AGREEMENT NAME

8. FARM OR LEASE NAME

Con Hale

9. WELL NO.

1J

10. FIELD AND POOL, OR WILDCAT

Ballard Pictured Cliffs

11. SEC., T., R., M., OR BLM.
AND SURVEY OR AREA

G Sec 24, T26N, R8W

12. COUNTY OR PARISH

San Juan

13. STATE

N.M.

16. NO. OF ACRES IN LEASE

160

17. NO. OF ACRES ASSIGNED

TO THIS WELL
160

19. PROPOSED DEPTH

3000'

20. ROTARY OR CABLE TOOLS

Rotary

22. APPROX. DATE WORK WILL START*

11-15-82

23.

PROPOSED CASING AND CEMENTING PROGRAM

SIZE OF HOLE	SIZE OF CASING	WEIGHT PER FOOT	SETTING DEPTH	QUANTITY OF CEMENT
9-5/8"	7-5/8"	26.4	120'	(118 lbs) 100 sx, circ to surface
6-1/4"	2-7/8"	6.4	3000'	350 sx 100 sx neat (118 lbs) 250 sx 3% 50 P02 6% gel (382 lbs)

1. Drill 9-5/8" hole to +120'. Run and set 7-5/8" casing.
2. Circulate cement to surface.
3. Wait on cement 12 hours.
4. Install BOP. Pressure test casing and BOP to 1000 psig.
5. Drill 6-1/4" hole to +3000' with fresh water gel mud.
6. Run electric and radioactive logs.
7. Run 2-7/8" casing and cement.
8. Selectively perforate and stimulate the Pictured Cliffs formation and complete as required by regulations.

IN ABOVE SPACE DESCRIBE PROPOSED PROGRAM: If proposal is to deepen or plug back, give data on present productive zone and proposed new productive zone. If proposal is to drill or deepen directionally, give pertinent data on subsurface locations and measured and true vertical depths. Give blowout preventer program, if any.

24.

SIGNED

Veryl F. Moore

TITLE

Operator

DATE

11-3-82

(This space for Federal or State office use)

PERMIT NO.

APPROVED BY

CONDITIONS OF APPROVAL, IF ANY:

APPROVAL DATE

TITLE

NOV

OIL

*See Instructions On Reverse Side

APPROVED
AS AMENDED

DATE

NOV 26 1982

JAMES F. SIMS
DISTRICT ENGINEER

OIL CONSERVATION DIVISION

P. O. BOX 2088

STATE OF NEW MEXICO
OIL AND MINERALS DEPARTMENT

SANTA FE, NEW MEXICO 87501

Form C-107
Revised 10-1-78

All distances must be from the outer boundaries of the Section.

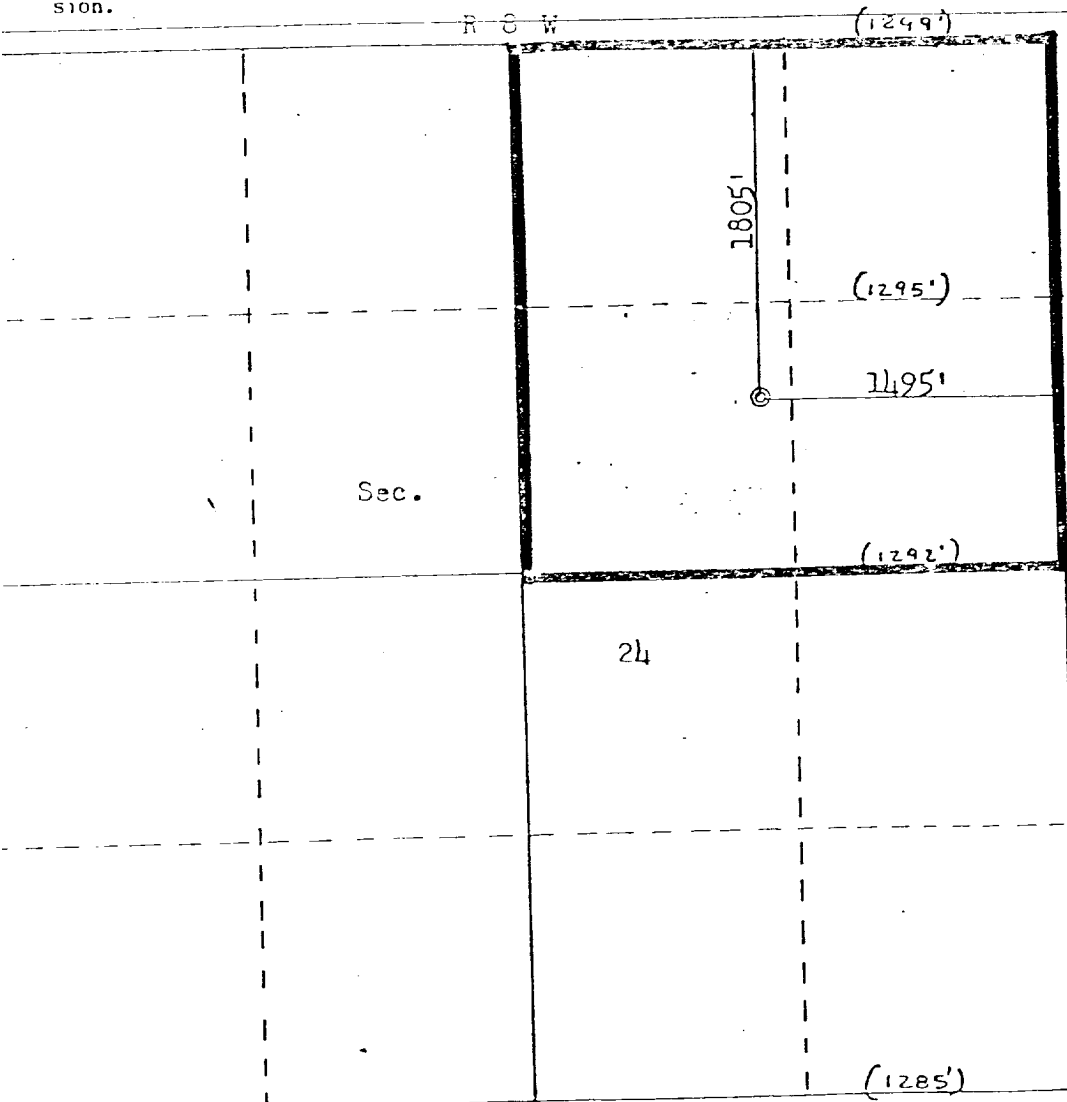
Lease		Well No.	
CON-HALE		1J	
Owner	Section	Township	Range
VERYL F. MOORE	24	26N	8W
County	San Juan		
Actual Footage Location of Well:			
805	feet from the	North	line and 1495
feet from the	East		line
Ground Level Elev:	Producing Formation	Pool	Dedicated Acreage:
5965	Pictured Cliffs	Ballard	160 Acres

1. Outline the acreage dedicated to the subject well by colored pencil or hatchure marks on the plat below.
2. If more than one lease is dedicated to the well, outline each and identify the ownership thereof (both as to working interest and royalty).
3. If more than one lease of different ownership is dedicated to the well, have the interests of all owners been consolidated by communitization, unitization, force-pooling, etc?

☐ Yes ☐ No If answer is "yes," type of consolidation _____

If answer is "no," list the owners and tract descriptions which have actually been consolidated. (Use reverse side of this form if necessary.) _____

No allowable will be assigned to the well until all interests have been consolidated (by communitization, unitization, forced-pooling, or otherwise) or until a non-standard unit, eliminating such interests, has been approved by the Commission.



CERTIFICATION

I hereby certify that the information contained herein is true and complete to the best of my knowledge and belief.

Name Veryl F. Moore

Position Operator

Company Veryl F. Moore

Date October 20, 1982

I hereby certify that the well location shown on this plat was plotted from field notes of actual survey made by me or under my supervision and that the same is true and correct to the best of my knowledge and belief.

Date Surveyed October 19, 1982

Registered Professional Engineer and Land Surveyor

Fred B. Kerr Jr.

Certificate No. 3950