

Submit to Appropriate District Office  
 State Lease - 6 copies  
 Fee Lease - 5 copies

State of New Mexico  
 Energy, Minerals and Natural Resources Department

Form C-101  
 Revised 1-1-89

**OIL CONSERVATION DIVISION**

P.O. Box 2088  
 Santa Fe, New Mexico 87504-2088

DISTRICT I  
 P.O. Box 1980, Hobbs, NM 88240

DISTRICT II  
 P.O. Drawer DD, Artesia, NM 88210

DISTRICT III  
 1000 Rio Brazos Rd., Aztec, NM 87410

API NO. ( assigned by OCD on New Wells)

30-045-27103

5. Indicate Type of Lease  
 STATE  FEE

6. State Oil & Gas Lease No.  
 LG 2062

**APPLICATION FOR PERMIT TO DRILL, DEEPEN, OR PLUG BACK**

1a. Type of Work:  
 DRILL  RE-ENTER  DEEPEN  PLUG BACK   
 b. Type of Well:  
 OIL WELL  GAS WELL  OTHER   
 SINGLE ZONE  MULTIPLE ZONE

7. Lease Name or Unit Agreement Name  
 North Bisti Coal 32 Com

2. Name of Operator  
 Hixon Development Company

8. Well No.  
 1 E/320

3. Address of Operator  
 P. O. Box 2810, Farmington, NM 87499

9. Pool name or Wildcat  
 Basin Fruitland Coal

4. Well Location  
 Unit Letter H : 1625 Feet From The North Line and 915 Feet From The East Line  
 Section 32 Township 26N Range 12W NMPM San Juan County

10. Proposed Depth 1200' 11. Formation Fruitland 12. Rotary or C.T. Rotary

13. Elevations (Show whether DF, RT, GR, etc.) 6110' GLE 14. Kind & Status Plug. Bond 15. Drilling Contractor Unknown 16. Approx. Date Work will start

**PROPOSED CASING AND CEMENT PROGRAM**

SIZE OF HOLE	SIZE OF CASING	WEIGHT PER FOOT	SETTING DEPTH	SACKS OF CEMENT	EST. TOP
8-3/4"	7"	23 lb	110'	60 sks (1.18 ft <sup>3</sup> /sk)	Surface
6-1/4"	4-1/2"	10.5 lb	1200'	125 sks	Surface

(75 sks - 2.06 ft<sup>3</sup>/sk)  
 (50 sks - 1.18 ft<sup>3</sup>/sk)

It is proposed to drill the subject Basin Fruitland Coal Gas well. It will be evaluated on the basis of open hole logs. A BOP will be used during drilling operations.

**RECEIVED**

MAY 16 1990

OIL CON. DIV

DIST. 3

APPROVAL EXPIRES 11-18-90  
 UNLESS DRILLING IS COMMENCED.  
 SPUD NOTICE MUST BE SUBMITTED  
 WITHIN 10 DAYS.

IN ABOVE SPACE DESCRIBE PROPOSED PROGRAM: IF PROPOSAL IS TO DEEPEN OR PLUG BACK, GIVE DATA ON PRESENT PRODUCTIVE ZONE AND PROPOSED NEW PRODUCTIVE ZONE. GIVE BLOWOUT PREVENTER PROGRAM, IF ANY.

I hereby certify that the information above is true and complete to the best of my knowledge and belief.

SIGNATURE John C. Corbett TITLE Vice President-Exploration DATE May 14, 1990

TYPE OR PRINT NAME John C. Corbett TELEPHONE NO. 505-326-3325

(This space for State Use)

APPROVED BY [Signature] TITLE DEPUTY OIL & GAS INSPECTOR, DIST. #3 DATE MAY 19 1990

CONDITIONS OF APPROVAL, IF ANY:

Hold C-104 for CA

Very truly yours,  
[Signature]

RECEIVED BY THE  
DIRECTOR OF THE  
POLICE DEPARTMENT  
ON JAN 11 1964

END OF PAGE

100-100000-1000

Submit to Appropriate District Office  
 State Lease - 4 copies  
 Fee Lease - 3 copies

State of New Mexico  
 Energy, Minerals and Natural Resources Department

Form C-102  
 Revised 1-1-89

**OIL CONSERVATION DIVISION**

P.O. Box 2088  
 Santa Fe, New Mexico 87504-2088

**DISTRICT I**  
 P.O. Box 1980, Hobbs, NM 88240

**DISTRICT II**  
 P.O. Drawer DD, Artesia, NM 88210

**DISTRICT III**  
 1000 Rio Brazos Rd., Aztec, NM 87410

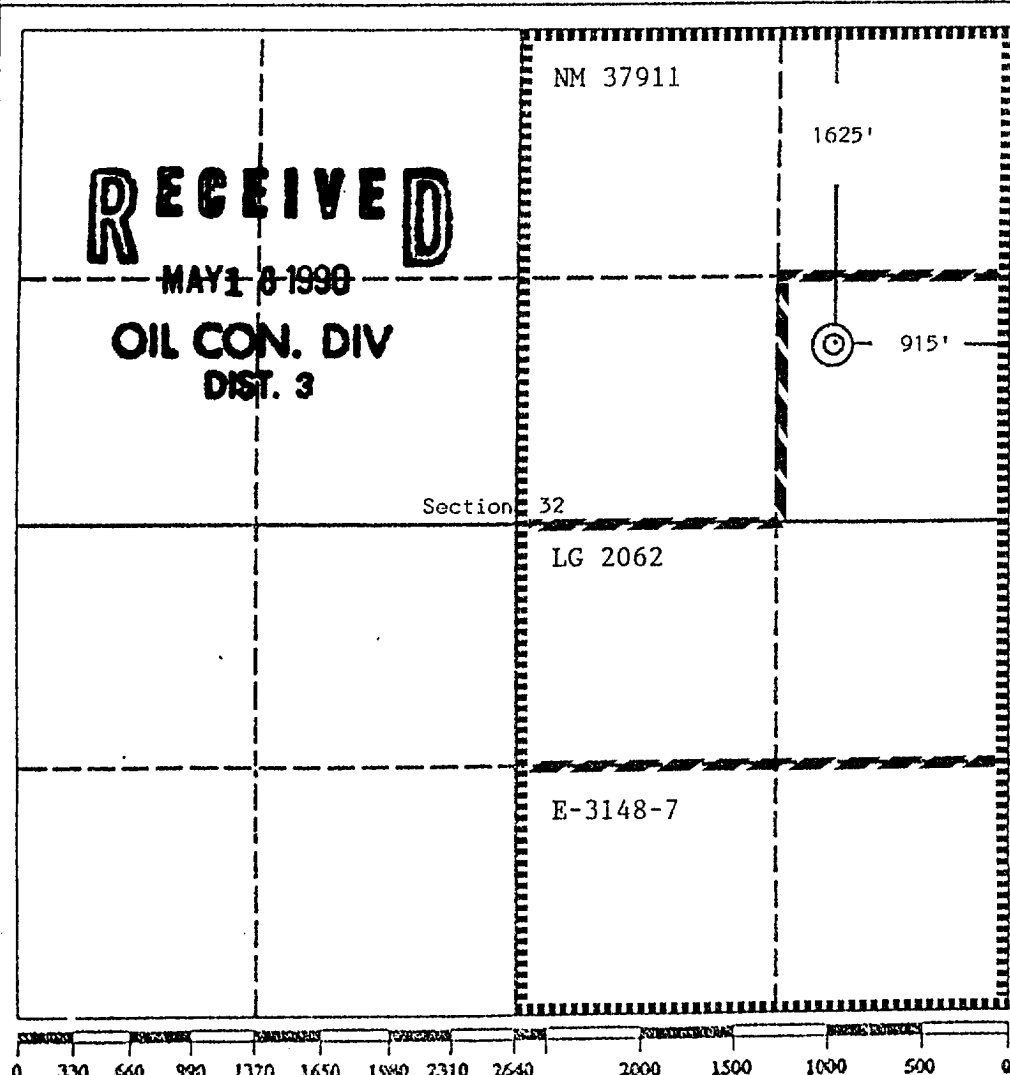
**WELL LOCATION AND ACREAGE DEDICATION PLAT**

All Distances must be from the outer boundaries of the section

Operator Hixon Development Company		Lease North Bisti Coal 32 Com		Well No. 1
Unit Letter H	Section 32	Township 26 North	Range 12 West	County San Juan
Actual Footage Location of Well: 1625 feet from the North line and 915 feet from the East line				
Ground level Elev. 6110	Producing Formation Fruitland	Pool Basin Fruitland Coal		Dedicated Acreage: 320 Acres

1. Outline the acreage dedicated to the subject well by colored pencil or hatchure marks on the plat below.
2. If more than one lease is dedicated to the well, outline each and identify the ownership thereof (both as to working interest and royalty).
3. If more than one lease of different ownership is dedicated to the well, have the interest of all owners been consolidated by communitization, unitization, force-pooling, etc.?  
 Yes  No If answer is "yes" type of consolidation \_\_\_\_\_

If answer is "no" list the owners and tract descriptions which have actually been consolidated. (Use reverse side of this form if necessary. Hixon Development operates LG-2062 and E-3148-7.  
 No allowable will be assigned to the well until all interests have been consolidated (by communitization, unitization, forced-pooling, or otherwise) or until a non-standard unit, eliminating such interest, has been approved by the Division.



**OPERATOR CERTIFICATION**  
 I hereby certify that the information contained herein is true and complete to the best of my knowledge and belief.

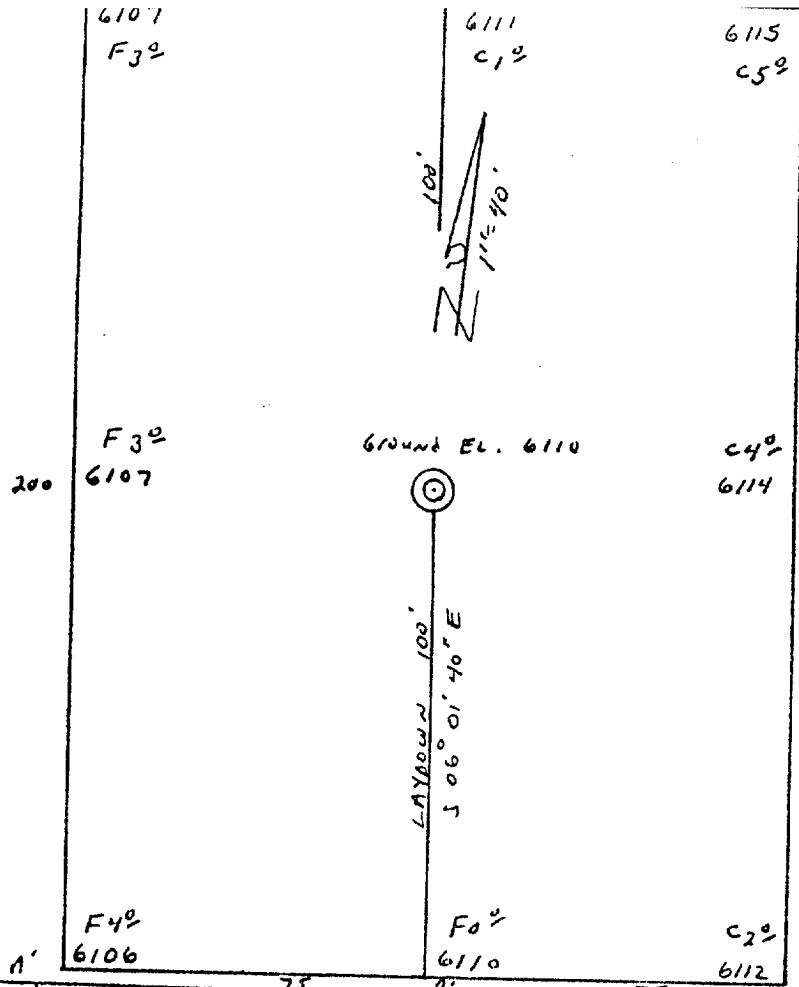
Signature: *John C. Corbett*  
 Printed Name: John C. Corbett  
 Position: Vice President-Exploration  
 Company: Hixon Development Company  
 Date: May 15, 1990

**SURVEYOR CERTIFICATION**  
 I hereby certify that the well location shown on this plat was plotted from field notes of actual surveys made by me or under my supervision, and that the same is true and correct to the best of my knowledge and belief.

Date Surveyed: April 25, 1990

Signature & Seal of Professional Surveyor: *Edgar L. Risenhoo*  
 Certificate No. 5979  
 Edgar L. Risenhoo

RECEIVED  
MAY 10 1950  
OIL COM. DIV.  
DIST. 3



Hixon Development Company  
OPERATOR

North Bisti Coal 32 Com #1  
WELL NAME and NUMBER

1625' F/NL · 915' F/EL  
FOOTAGES

32	26N	12W
<u>SEC.</u>	<u>TWP.</u>	<u>RGE.</u>

San Juan, NM  
COUNTY

April 25, 1990  
DATE

		75	0'	75	c'
6110					6110
6100					

Horiz 1" = 40'  
 Vert 1" = 30'

6110	✓	✓	•	✓	6110 ✓
6100					

					6110
6110	✓	✓	✓	✓	✓
6100					