

DISTRICT I
P.O. Box 1980, Hobbs, NM 88241-1980

DISTRICT II
P.O. Drawer DD, Artesia, NM 88211-0719

DISTRICT III
1000 Rio Brazos Rd, Aztec, NM 87410

State of New Mexico
Energy, Minerals and Natural Resources Department

OIL CONSERVATION DIVISION
P.O. Box 2088
Santa Fe, New Mexico 87504-2088

Form C-107
Revised 4-1-91

Filing Instructions
Bottom of Page

APPLICATION FOR MULTIPLE COMPLETION

Great Western Drilling Co. 2550 La Plata Hwy. Farmington, NM 87401

Operator	Address		
Bond Federal	1-E	J 13 26N 8W	San Juan
Lease	Well No.	Unit Ltr. - Sec - Twp - Rge	County

All applicants for multiple completion must complete Items 1 and 2 below.

1. The following facts are submitted:	Upper Zone	Intermediate Zone	Lower Zone
a. Name of Pool and Formation	Ballard Pictured Cliffs		Basin Dakota
b. Top and Bottom of Pay Section (Perforations)	2149-2154, 2173-2183		6580-6590, 6594-6596 6602-6608, 6610-6616 6618-6630 ; 6634-6642 6630-6653 ; 6654-6667
c. Type of production (Oil or Gas)	GAS		GAS
d. Method of Production (Flowing or Artificial Lift)	FLOWING		FLOWING
e. Daily Production <input type="checkbox"/> Actual <input checked="" type="checkbox"/> Estimated Oil Bbls. Gas MCF Water Bbls.	- 500 -		1 250 0

2. The following must be attached:
- Diagrammatic Sketch of the Multiple Completion, showing all casing strings, including diameters and setting depths, centralizers and/or turbolizers and location thereof, quantities used and top of cement, perforated intervals, tubing strings, including diameters and setting depth, location and type of packers and side door chokes, and such other information as may be pertinent.
 - Plat showing the location of all wells on applicant's lease, all offset wells on offset leases, and the names and addresses of operators of all leases offsetting applicant's lease.
 - Electrical log of the well or other acceptable log with tops and bottoms of producing zones and intervals of perforation indicated thereon. (If such log is not available at the time application is filed it shall be submitted as provided by Rule 112-A.)

OPERATOR:

I hereby certify above information is true and complete to best of my knowledge, and belief.

Signature John B Keeling
 Printed Name & Title John B Keeling
Division Prod. & Drlg. Supervisor
 Date 1-13-92 Telephone 327-0494

OIL CONSERVATION DIVISION

Approved by: [Signature]
 Title: DEPUTY OIL & GAS INSPECTOR, DIST
 Date: JAN 13 1992

NOTE: If the proposed multiple completion will result in an unorthodox well location and/or a non-standard proration unit in one or more of the producing zones, then separate application for approval of the same should be filed simultaneously with this application.

FILING INSTRUCTIONS:

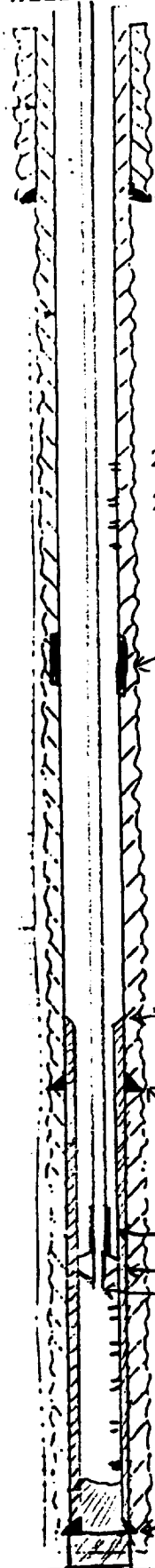
- District Approval -- See rule 112-A-B -- Submit 4 copies of Form C-107 with attachments to appropriate district office.
- Division Director Administrative Approval -- See Rule 112-C -- Submit 2 copies of Form C-107 with attachments to Division office in Santa Fe and 2 copies of Form C-107 with attachments to appropriate district office.
- Multiple completions not qualifying for District or Division Director approval may be set for hearing as outlined in Rule 112-A-E.

COMPLETION DATA SHEET

Well No. 1-E Sec. 13 T. 1
 San Juan Co.

VISION Farmington FIELD Basin Dakota Ballard Pictured Cliffs LOCATION Unit J of Section 13, T-26N, R-8W

WELL PROFILE



TD	DRILL PIPE 6774	LOG
PBTD	DRILL PIPE	GAMMA-RAY 6690

ELEVATION	DATUM POINT (IGRD-KB) 6243 GL
	DATUM POINT ELEVATI 12' KB

CASING DESIGN

SIZE	WEIGHT	GRADE	THREAD	COUPLING	MAKE	NO. JTS.	FOOTAGE
10 3/4	40.5	K-55	8rd	short	260 sx class "B" circ	9	.365
7"	23#	K-55	8rd	long	930 sx 2 stage circ	115	4848'
4 1/2	11#	K-55	8rd	long	liner 350 cu. ft.	47	2077'
					excess reversed out		

PERFORATED INTERVAL	FORMATION	REMARKS
2149-51, 2173-83	PC	15' 2.5 PF 30 holes acidized w/500 gal 15% frac w/40,500 gal slick water, 25,700# 20/40 sand
6580-90, 6594-96	Dakota	60' 2 SPF 120 holes acidize w/1000 gal 15% frac w/104,000 gal slick water, 183,000# 20/40 sand.
6602-08, 6610-16		
6813-30, 6634-42		
6650-53, 6654-67		

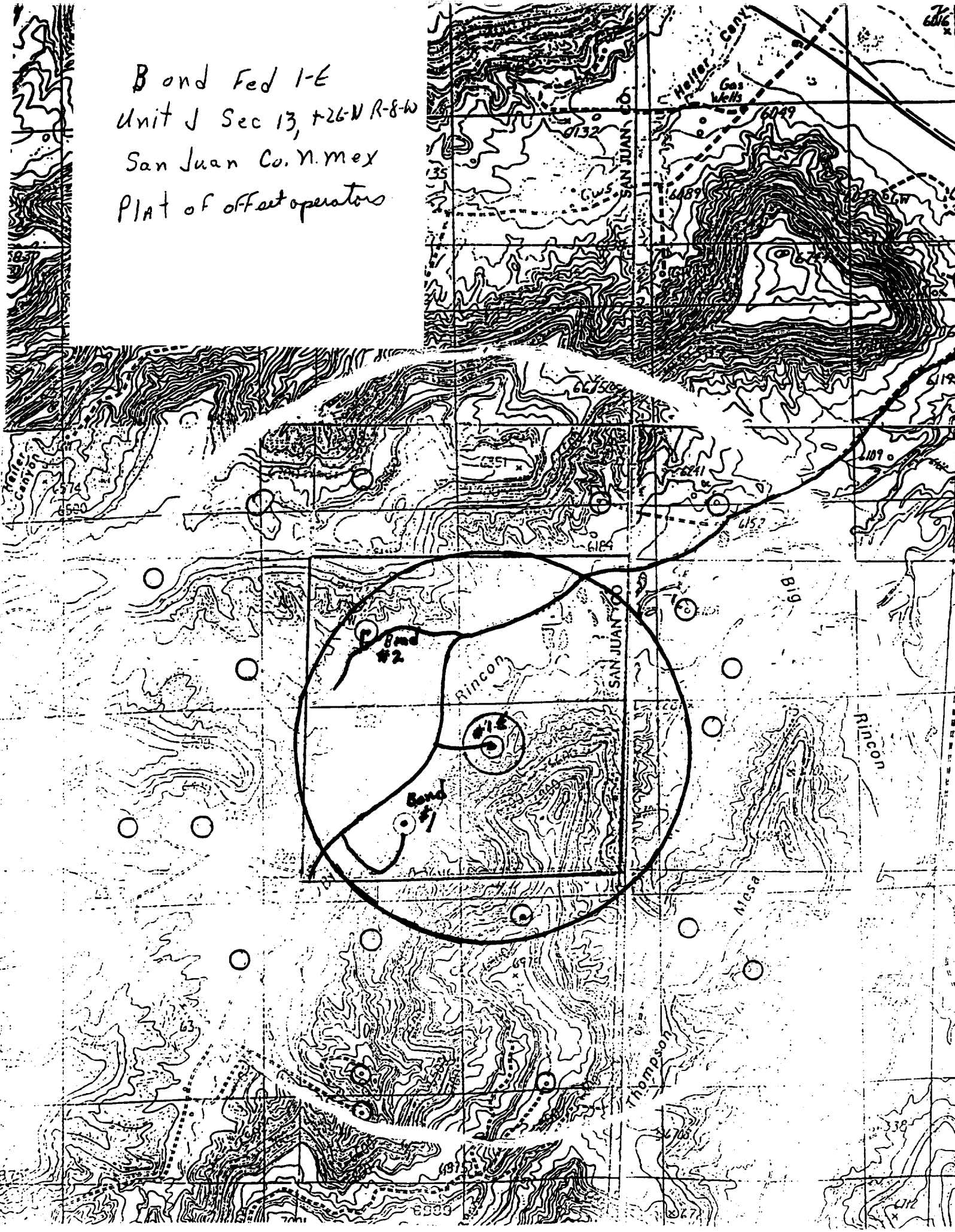
COMMENTS: 10-3/4" ran in 14-3/4" hole w/4 centralizers bottom 3 jts. cement circulated. 7" ran in 8-3/4" hole cemented in 2 stages, 1 stage 380 sx 65/35 poz tailed by 150 sx class "B", 55 bbl. good cement to pit during circulation 2 nd stage 380 sx 65/35 poz 6% gel circulated 78 bbl. good cement to pit, 2 stage collar @ 2454' centralizer bottom 3 jts, 2 above, 2 below 2 stage collar 2100' to 2300' thru PC on each jt. 6 cent total of 14 centralizers in 6 1/2" hole.

t. sliding sleeve 4 1/2" liner set from 4619 to 6696' w/baker liner hanger, cemented w/232 cu ft 65/35 poz followed by 118 cu ft class "B" reversed out 20 bbl good cement Ran Baker model "D" packer, set at 6510' KBM, Ran 6498' w/10,000# comp on Model "D" set @ 6510', Produce PC up Csg. Produce Dakota up tubing Casing has cement top to bottom.

6667'
 PBTD 6690
 Liner shoe 6696
 TD hole @ 6774'

SUBMITTED BY John B. Keding Jr. DATE 1-13-92 APPROVED BY _____

Bond Fed 1-E
Unit J Sec 13, T26N R-8-W
San Juan Co. N. Mex
PLAT of offset operators





GREAT WESTERN DRILLING COMPANY
Post Office Box 1659 • Midland, Texas 79702 • 915/682-5241

January 13, 1992

OIL CONSERVATION COMMISSION
1000 Rio Brazos Road
Aztec, NM 87410

RE- BOND FEDERAL #1-E

Here is a list of off-setting operators.

Veryle F. Moore
2605 Highland Place, Farmington, NM 87401
Mrs. Curtiss J. Little
P. O. Box 1258, Farmington, NM 87499
Dekalb Energy Co.
1625 Broadway, Denver, CO 80202
Amoco Production Co.
P. O. Box 800, Denver, CO 80202
Lively Exploration Co.
1300 Post Day Blvd. Suite 1900, Houston, TX 77056
E. L. Fundingsland
P. O. Box 1157, Littleton, CO 80160
Snyder Oil Co.
1801 California St. Suite 3500, Denver, CO 80202