


UNITED STATES
DEPARTMENT OF THE INTERIOR
BUREAU OF LAND MANAGEMENT

RECEIVED
FILM

94 SEP -7 AM 10:30

APPLICATION FOR PERMIT TO DRILL, DEEPEN, OR PLUG BACK

070 EMBERTON, NM

1a. Type of Work DRILL	RECEIVED SEP 21 1994	5. Lease Number NM-03154
1b. Type of Well GAS		6. If Indian, All. or Tribe
2. Operator MERIDIAN OIL OIL CON. DIV. 14538		7. Unit Agreement Name
3. Address & Phone No. of Operator PO Box 4289, Farmington, NM 87499 (505) 326-9700	DIST. 3	8. Farm or Lease Name 6819 Ballard 9. Well Number 500
4. Location of Well 1960' FSL, 1330' FWL Latitude 36° 29' 11", Longitude 107° 46' 49"		10. Field, Pool, Wildcat 71629 Basin Ft Coal 11. Sec., Twn, Rge, Mer. K Sec 15, T-26-N, R-9-W NMPM
14. Distance in Miles from Nearest Town 5 miles to Huerfano Trading Post	12. County San Juan	13. State NM
15. Distance from Proposed Location to Nearest Property or Lease Line 1330'	API#: 30-045-29183	
16. Acres in Lease	17. Acres Assigned to Well 320 W/2	
18. Distance from Proposed Location to Nearest Well, Drlg, Compl, or Applied for on this Lease 1330'		
19. Proposed Depth 2200'	20. Rotary or Cable Tools Rotary	
21. Elevations (DF, FT, GR, Etc.) 6332' GR	22. Approx. Date Work will Start 4th quarter 1994	
23. Proposed Casing and Cementing Program This action is subject to technical and procedural review pursuant to 43 CFR 3165.3 and appeal pursuant to 43 CFR 3165.4. See Operations Plan attached		
24. Authorized by: 	DRILLING OPERATIONS AUTHORIZED ARE SUBJECT TO COMPLIANCE WITH ATTACHED "GENERAL REQUIREMENTS" 9/7/94 Date	
Regional Drilling Engineer		

PERMIT NO. _____ APPROVAL DATE _____
APPROVED BY _____ TITLE _____ DATE _____

Archaeological Report submitted by Arboles Contract Arch. Technical Report #591 dated 07-21-94
Threatened and Endangered Species Report submitted by Ecosphere Environmental Services dated 07-21-94
NOTE: This format is issued in lieu of U.S. BLM Form 3160-3

**APPROVED
AS AMENDED**

SEP 15 1994

DISTRICT MANAGER

NMOCD

District I
PO Box 1980, Hobbs, NM 88241-1980
District II
PO Drawer DD, Artesia, NM 88211-0719
District III
1000 Rio Brazos Rd., Aztec, NM 87410
District IV
PO Box 2088, Santa Fe, NM 87504-2088

State of New Mexico
Energy, Minerals & Natural Resources Department

OIL CONSERVATION DIVISION

PO Box 2088
Santa Fe, NM 87504-2088

Form C-102

Revised February 21, 1994

Instructions on back

Submit to Appropriate District Office

State Lease - 4 Copies

Fee Lease - 3 Copies

070 FARMINGTON, NM

☐ AMENDED REPORT

WELL LOCATION AND ACREAGE DEDICATION PLAT

API Number <u>30-045-29183</u>	Pool Code 71629	Pool Name Basin Fruitland Coal
Property Code <u>6819</u>	Property Name Ballard	Well Number 500
OGRID No. 14538	Operator Name Meridian Oil Inc.	Elevation 6332'

¹⁰ Surface Location

UL or lot no. K	Section 15	Township 26N	Range 9W	Lot Idn	Feet from the 1960	North/South line South	Feet from the 1330	East/West line West	County S.J.
--------------------	---------------	-----------------	-------------	---------	-----------------------	---------------------------	-----------------------	------------------------	----------------

¹¹ Bottom Hole Location If Different From Surface

UL or lot no.	Section	Township	Range	Lot Idn	Feet from the	North/South line	Feet from the	East/West line	County
---------------	---------	----------	-------	---------	---------------	------------------	---------------	----------------	--------

¹² Dedicated Acres 320	¹³ Joint or Infill	¹⁴ Consolidation Code	¹⁵ Order No.
--------------------------------------	-------------------------------	----------------------------------	-------------------------

NO ALLOWABLE WILL BE ASSIGNED TO THIS COMPLETION UNTIL ALL INTERESTS HAVE BEEN CONSOLIDATED
OR A NON-STANDARD UNIT HAS BEEN APPROVED BY THE DIVISION

16	5204.76'	17 OPERATOR CERTIFICATION
USA NM-03154		I hereby certify that the information contained herein is true and complete to the best of my knowledge and belief
		<u>Peggy Bradfield</u> Signature
		<u>Peggy Bradfield</u> Printed Name
		<u>Regulatory Representative</u> Title
		<u>8-23-94</u> Date
1330'	15 RECEIVED SEP 21 1994 OIL CON. DIV. DIST. 3	18 SURVEYOR CERTIFICATION
		I hereby certify that the well location shown on this plat was plotted from field notes of actual surveys made by me or under my supervision, and that the same is true and correct to the best of my knowledge and belief
		<u>7</u> Date of Survey
		<u>6857</u> Signature and Seal of Registered Professional Surveyor
5280.66'	5280.00'	6857 Certificate Number

5203.44'

OPERATIONS PLAN

Well Name: Ballard #500
Location: 1960'FSL, 1330'FWL, Section 15, T-26-N, R-9-W
 San Juan County, New Mexico
 Latitude 36° 29' 11", Longitude 107° 46' 49"
Formation: Basin Fruitland Coal
Elevation: 6632'GL

Formation:	Top	Bottom	Contents
Surface	Nacimiento	1155'	
Ojo Alamo	1155'	1258'	aquifer
Kirtland	1258'	1707'	
Fruitland	1707'	1958'	
Pictured Cliffs	1958'		
Total Depth	2200'		

Logging Program: Mud logs: 1650' to TD
 Dens/Neut/Por;Density/Corr;Micro/GR;Numar MR: 1650-TD
 Ind/SP/GR: to TD

Mud Program:

Interval	Type	Weight	Vis.	Fluid Loss
0- 200'	Spud	8.4-8.9	40-50	no control
200-2200'	Non-dispersed	8.4-9.5	30-60	no control

Casing Program:

Hole Size	Depth Interval	Csg.Size	Wt.	Grade
12 1/4"	0 - 200'	8 5/8"	24.0#	K-40
7 7/8"	0 - 2200'	4 1/2"	10.5#	K-55

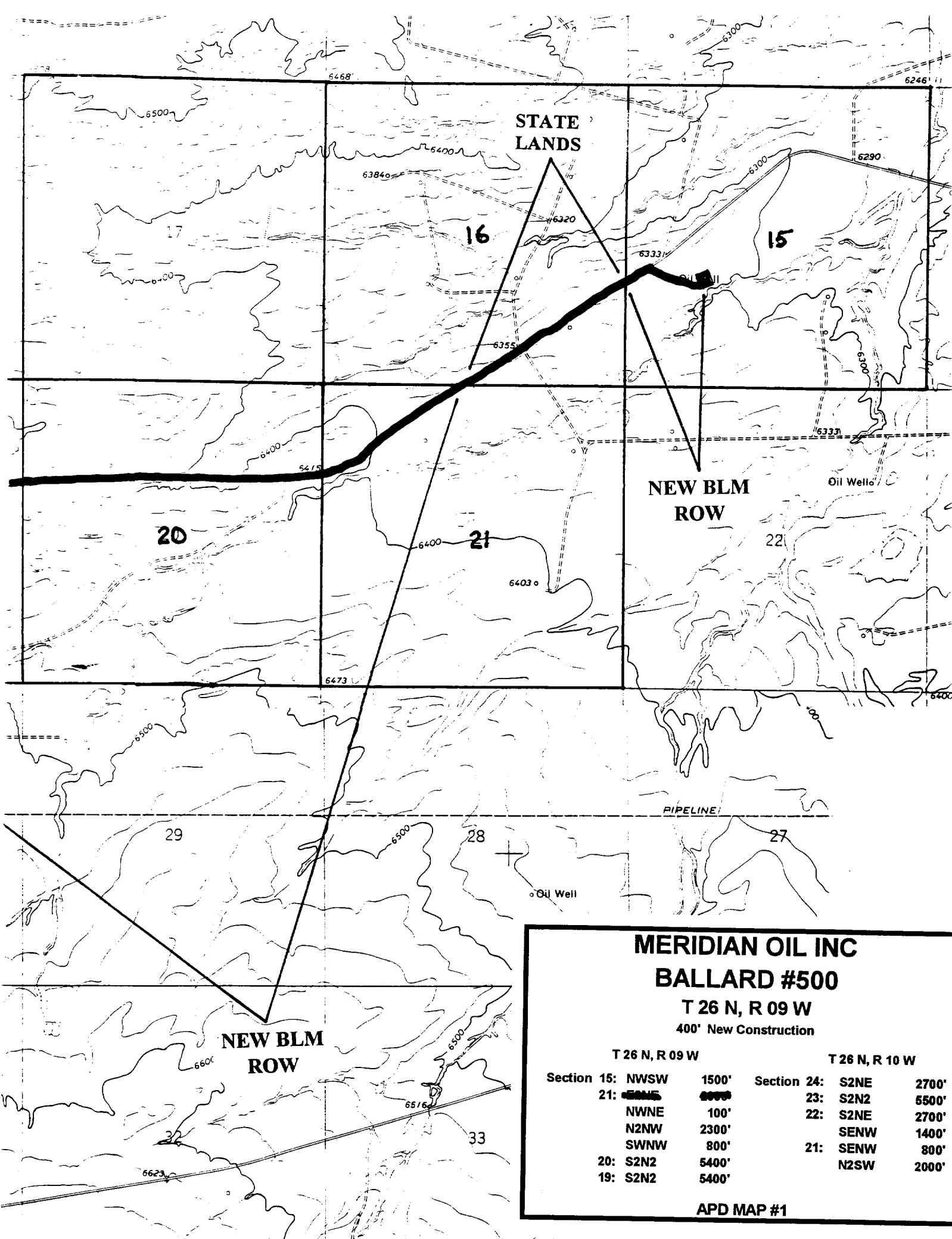
Tubing Program:

0 - 2200'	2 3/8"	4.7#	J-55
-----------	--------	------	------

Float Equipment: 8 5/8" surface casing - saw tooth guide shoe.
 Centralizers will be run in accordance with Onshore Order #2.

4 1/2" production casing - float shoe on bottom. Three centralizers run every other joint above shoe. Two centralizers run every 3rd joint to the base of the Ojo Alamo @ 1258'. Two turbolizing type centralizers - one below and one into the base of the Ojo Alamo @ 1258'. Standard centralizers thereafter every fourth joint up to the base of the surface pipe.

Wellhead Equipment: 8 5/8" x 4 1/2" x 2 3/8" x 11" 2000 psi xmas tree assembly.



MERIDIAN OIL INC **BALLARD #500**

T 26 N, R 09 W
 400' New Construction

T 26 N, R 09 W		T 26 N, R 10 W	
Section 15:	NWSW 1500'	Section 24:	S2NE 2700'
21:	SENE 800'	23:	S2N2 5500'
	NWNE 100'	22:	S2NE 2700'
	N2NW 2300'		SENE 1400'
	SNNW 800'	21:	SENE 800'
20:	S2N2 5400'		N2SW 2000'
19:	S2N2 5400'		

APD MAP #1