

UNITED STATES
DEPARTMENT OF THE INTERIOR
BUREAU OF LAND MANAGEMENT

APPLICATION FOR PERMIT TO DRILL, DEEPEN, OR PLUG BACK

1a. Type of Work DRILL	RECEIVED MAR - 7 1997 OIL CON. DIV. DIST. 3	5. Lease Number NM-04226 Unit Reporting Number
1b. Type of Well GAS		6. If Indian, All. or Tribe
2. Operator BURLINGTON RESOURCES 14538 Oil & Gas Company	7. Unit Agreement Name	
3. Address & Phone No. of Operator PO Box 4289, Farmington, NM 87499 (505) 326-9700	8. Farm or Lease Name 7309 McManus 9. Well Number 4R	
4. Location of Well 1130' FSL, 1530' FEL Latitude 36° 28.16, Longitude 107° 43.12	10. Field, Pool, Wildcat 71439 Ballard Pic. Cliffs 11. Sec., Twn, Rge, Mer. (NMPM) O Sec 19, T-26-N, R-8-W API # 30-045-29439	
14. Distance in Miles from Nearest Town 7 miles to Huerfano	12. County San Juan	13. State NM
15. Distance from Proposed Location to Nearest Property or Lease Line 1130'		
16. Acres in Lease	17. Acres Assigned to Well 160 SE/4	
18. Distance from Proposed Location to Nearest Well, Drig, Compl, or Applied for on this Lease 2000'		
19. Proposed Depth 2300'	20. Rotary or Cable Tools Rotary	
21. Elevations (DF, FT, GR, Etc.) 6359' GR	22. Approx. Date Work will Start	
23. Proposed Casing and Cementing Program See Operations Plan attached	DRILLING OPERATIONS AUTHORIZED ARE SUBJECT TO COMPLIANCE WITH ATTACHED "GENERAL REQUIREMENTS"	
24. Authorized by: <u><i>Peggy Braadfield</i></u> Regulatory/Compliance Administrator	Date <u>1-15-97</u>	

PERMIT NO. _____

APPROVAL DATE MAR 04 1997

APPROVED BY _____

TITLE _____

DATE MAR 04 1997

Archaeological Report to be submitted
Threatened and Endangered Species Report to be submitted
NOTE: This format is issued in lieu of U.S. BLM Form 3160-3

OK *(Signature)*

NMOCD

COPIES
57 MAR 11 PM 2:10
RECEIVED

District I
PO Box 1980, Hobbs, NM 88241-1980
District II
PO Drawer 00, Artesia, NM 88211-0719
District III
1000 Rio Brazos Rd., Aztec, NM 87410
District IV
PO Box 2088, Santa Fe, NM 87504-2088

State of New Mexico
Energy, Minerals & Natural Resources Department

OIL CONSERVATION DIVISION
PO Box 2088
Santa Fe, NM 87504-2088

Form O-102
Revised February 21, 1994
Instructions on back
Submit to Appropriate District Office
State Lease - 4 Copies
Fee Lease - 3 Copies

☐ AMENDED REPORT

WELL LOCATION AND ACREAGE DEDICATION PLAT

API Number 30-045-29439	Pool Code 71439	Pool Name Ballard Pictured Cliffs
Property Code 7309	Property Name McManus	Well Number 4R
OGRID No. 14538	Operator Name BURLINGTON RESOURCES OIL & GAS COMPANY	Elevation 6359'

¹⁰ Surface Location

UL or lot no.	Section	Township	Range	Lot Ida	Feet from the	North/South line	Feet from the	East/West line	County
0	19	26-N	8-W		1130	South	1530	East	S.J.

¹¹ Bottom Hole Location If Different From Surface

UL or lot no.	Section	Township	Range	Lot Ida	Feet from the	North/South line	Feet from the	East/West line	County

¹² Dedicated Acres ¹³ Joint or Infill ¹⁴ Consolidation Code ¹⁵ Order No.

160

NO ALLOWABLE WILL BE ASSIGNED TO THIS COMPLETION UNTIL ALL INTERESTS HAVE BEEN CONSOLIDATED
OR A NON-STANDARD UNIT HAS BEEN APPROVED BY THE DIVISION

16 1294.26'	1300.86'	2601.06'	RECEIVED MAR - 7 1997 OIL CON. DIV. DIST. 3	¹⁷ OPERATOR CERTIFICATION I hereby certify that the information contained herein is true and complete to the best of my knowledge and belief. Signature Peggy Bradfield Printed Name Regulatory Administrator Title 1-15-97 Date
5256.90'	5783.81'	5198.82'		¹⁸ SURVEYOR CERTIFICATION I hereby certify that the well location shown on this plat was obtained from field notes of actual surveys made by me or under my supervision, and that the same is true and correct to the best of my belief. 11/26/96 Date of Survey Signature and Seal of Professional Surveyor NEALE G. EDWARDS NEW MEXICO 6857 6857 Certification Number
2	3	4		
1414.38'	1406.46'	2628.12'		

OPERATIONS PLAN

Well Name: McManus #4R
Location: 1130' FSL, 1530' FEL Section 19, T-26-N, R-8-W
 San Juan County, New Mexico
 Latitude 36° 28.16, Longitude 107° 43.12
Formation: Ballard Pictured Cliffs
Elevation: 6359' GL

Formation:	Top	Bottom	Contents
Surface	Nacimiento	1291'	
Ojo Alamo	1291'	1397'	aquifer
Kirtland	1397'	1782'	
Fruitland	1782'	2059'	gas
Fruitland Coal	1928'	2058'	gas
Pictured Cliffs	2059'		gas
Total Depth	2300'		

Logging Program: Hi Res Ind, Den/Neut, MRL/GR to Total Depth.

Mud Program:

Interval	Type	Weight	Vis.	Fluid Loss
0- 120'	Spud	8.4-9.0	40-50	no control
120-2300'	LSND	8.4-9.0	40-60	no control

Casing Program (as listed, equivalent, or better):

Hole Size	Depth Interval	Csg. Size	Wt.	Grade
12 1/4"	0 - 120'	8 5/8"	23.0#	M-50
6 1/4"	0 - 2300'	3 1/2"	7.7#	WC-70

Tubing Program: - none

Float Equipment: 8 5/8" surface casing - saw tooth guide shoe.
 Centralizers will be run in accordance with Onshore Order #2.

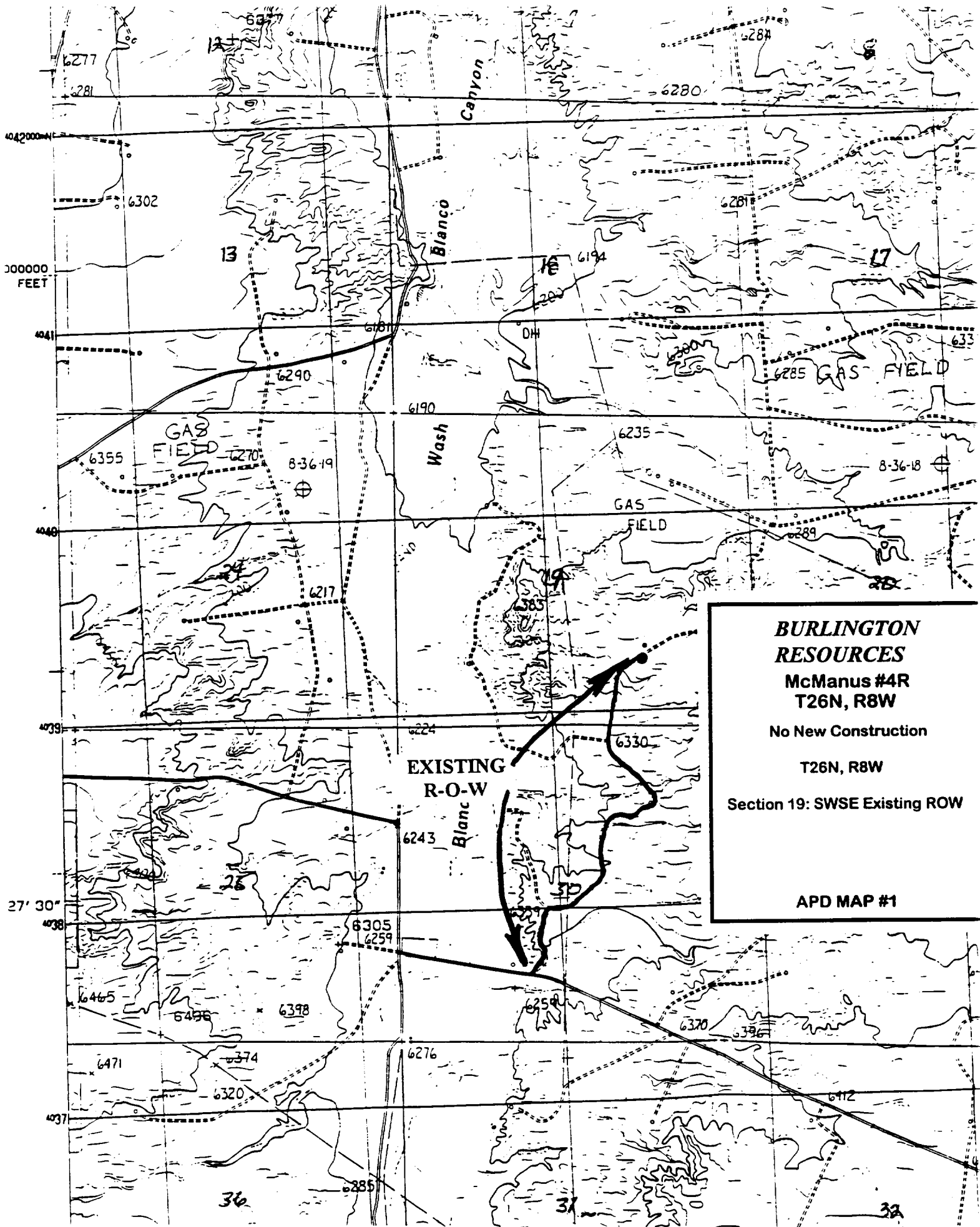
3 1/2" production casing - float shoe on bottom. Three centralizers run every other joint above shoe. Four centralizers run every 3rd joint to the base of the Ojo Alamo @ 1397'. Two turbolizing type centralizers - one below and one into the base of the Ojo Alamo @ 1397'. Standard centralizers thereafter every fourth joint up to the base of the surface pipe.

Wellhead Equipment: 8 5/8" x 3 1/2" x 11" 2000 psi screw on independent wellhead.

Cementing:

8 5/8" surface casing - cement with 129 sx Class "B" cement with 1/4# flocele/sx and 3% calcium chloride (149 cu.ft. of slurry, 200% excess to circulate to surface). WOC 12 hrs. Test casing to 600 psi for 30 minutes.

3 1/2" production casing - Lead w/266 sx of 65/35 Class "B" Poz w/6% gel, 2% calcium chloride, and 1/4# flocele/sx. Tail w/100 sx Class "B" w/2% calcium chloride (589 cu.ft. of slurry, 75% excess to circulate to surface). WOC 12 hrs. If cement does not circulate to surface, a CBL will be run during completion to determine TOC.



**BURLINGTON
RESOURCES**

**McManus #4R
T26N, R8W**

No New Construction

T26N, R8W

Section 19: SWSE Existing ROW

APD MAP #1