

DISTRICT I
PO Box 1980, Hobbs, NM 88240

DISTRICT II
PO Box DD, Artesia, NM 88210

DISTRICT III
1000 Rio Brazos Rd., Aztec, NM 87410

DISTRICT IV
2040 South Pacheco, Santa Fe, NM 87505

State of New Mexico
Energy, Minerals and Natural Resources Department

OIL CONSERVATION DIVISION

2040 Pacheco St.
Santa Fe, NM 87505

Form C-101
Revised February 21, 1994

Instructions on back
Submit to Appropriate District Office

State Lease - 6 Copies
Fee Lease - 5 Copies

ORIGINAL

☐ AMENDED REPORT

APPLICATION FOR PERMIT TO DRILL, RE-ENTER, DEPEN, PLUGBACK, OR ADD A ZONE

1. OPERATOR NAME AND ADDRESS Cross Timbers Operating Company 3000 North Garfield, Suite 175 Midland, Texas 79705		2. OGRID NUMBER 167067 5780167067
3. API NUMBER 30-0 45-29645	4. PROPERTY CODE 022581 32719	5. PROPERTY NAME Gallegos Com
6. WELL NUMBER 6E		

7. SURFACE LOCATION

U/I or lot no. G	Section 32	Township 26N	Range 11W	Lot Idn	Feet from the 1700	North/South line NORTH	Feet from the 1450	East/West line EAST	County SAN JUAN
---------------------	---------------	-----------------	--------------	---------	-----------------------	---------------------------	-----------------------	------------------------	--------------------

8. PROPOSED BOTTOM HOLE LOCATION IF DIFFERENT FROM SURFACE

U/I or lot no.	Section	Township	Range	Lot Idn	Feet from	North/South line	Feet from the	East/West line	County
----------------	---------	----------	-------	---------	-----------	------------------	---------------	----------------	--------

9. Proposed Pool 1
BASIN DAKOTA 71599

10. Proposed Pool 2

11. Work Type Code N	12/ Well Type Code G	13. Cable/Rotary ROTARY	14. Lease Type Code STATE	15. Ground Level Elevation 6216'
16. Multiple NO	17. Proposed Depth 6170'	18. Formation BASIN DAKOTA	19. Contractor	20. Spud Date ASAP

21. Proposed Casing and Cement Program

Hole Size	Casing Size	Casing weight/foot	Setting Depth	Sacks of Cement	Estimated TOC
12 1/4"	8 5/8"	24#, J-55, STC	300'	225	SURFACE
7 7/8"	4 1/2"	10.5#, J-55, STC	6,170'	260	300'
					Surface

22. Describe the proposed program. If this application is to DEEPEN or PLUG BACK give the data on the present productive zone and proposed new productive zone. Describe the blowout prevention program, if any. Use additional sheets if necessary.

Casing/Cement Program to 300': 225 Sacks Class B cement containing 2% CaCl₂, 1/4 PPS celloflake. Circulate to surface

Casing/Cement Program to 6,170': Stage 1: 260 sacks of 35/65/6 B/Poz/Gel cement containing 6% gel, 5 PPS gilsonite, 1/4 PPS celloflake followed with 150 sacks Class G cement containing 5 PPS Gilsonite, 1/4 PPS celloflake. Stage 2: (DV Tool @ +/- 3800') 500 sacks 35/65/6 Poz cement (same additives as above) followed by 100 sacks of Class G cement containing 5 PPS gilsonite.

A rig equipped with a double BOP will be used.

23. I hereby certify that the information given above is true and complete to the best of my knowledge and belief.

Signature: *Gary Markstad*
Printed Name: Gary Markstad

Title: Vice President - Production

Date: 7/29/98

Phone: (505) 632-5200

OIL CONSERVATION DIVISION

APPROVED BY: *Ernie Busch*
TITLE: **DEPUTY OIL & GAS INSPECTOR, DIST. #3**

Approval **AUG 4 1998** Expiration Date **AUG 4 1999**

Conditions of Approval:
Attached:

ORIGINAL

1. The first part of the document is a letter from the President of the United States to the Congress, dated January 1, 1801. It is a very important document, as it is the first time that the President has addressed the Congress since the establishment of the office.

District I
PO Box 1980, Hobbs, NM 88241-1980

District II
PO Drawer DD, Artesia, NM 88211-0719

District III
1000 Rio Brazos Rd., Aztec, NM 87410

District IV
PO Box 2088, Santa Fe, NM 87504-2088

State of New Mexico
Energy, Minerals & Natural Resources Department

OIL CONSERVATION DIVISION
PO Box 2088
Santa Fe, NM 87504-2088

ORIGINAL
Instructions on back
Submit to Appropriate District Office
State Lease - 4 Copies
Fee Lease - 3 Copies

☐ AMENDED REPORT

WELL LOCATION AND ACREAGE DEDICATION PLAT

*API Number 30-045-29645	*Pool Code 71599	*Pool Name BASIN DAKOTA
*Property Code 022581	*Property Name GALLEGOS COM	*Well Number 6E
*GRID No. (167087)	*Operator Name CROSS TIMBERS OPERATING COMPANY	*Elevation 6216'

¹⁰ Surface Location

UL or lot no. G	Section 32	Township 26N	Range 11W	Lot Idn	Feet from the 1700	North/South line NORTH	Feet from the 1450	East/West line EAST	County SAN JUAN
---------------------------	----------------------	------------------------	---------------------	---------	------------------------------	----------------------------------	------------------------------	-------------------------------	---------------------------

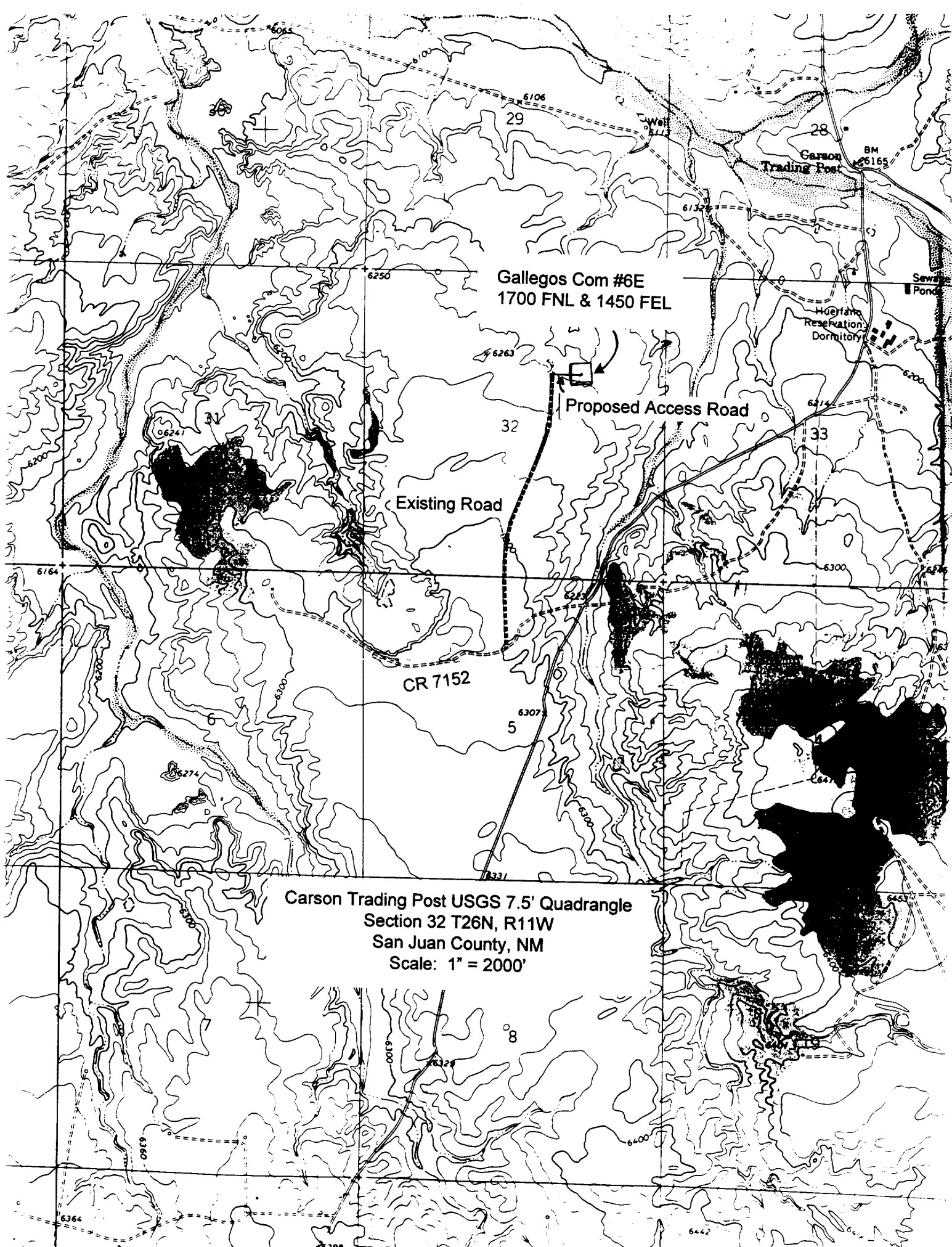
¹¹ Bottom Hole Location If Different From Surface

UL or lot no.	Section	Township	Range	Lot Idn	Feet from the	North/South line	Feet from the	East/West line	County
---------------	---------	----------	-------	---------	---------------	------------------	---------------	----------------	--------

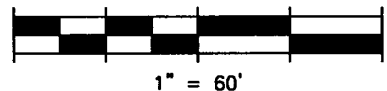
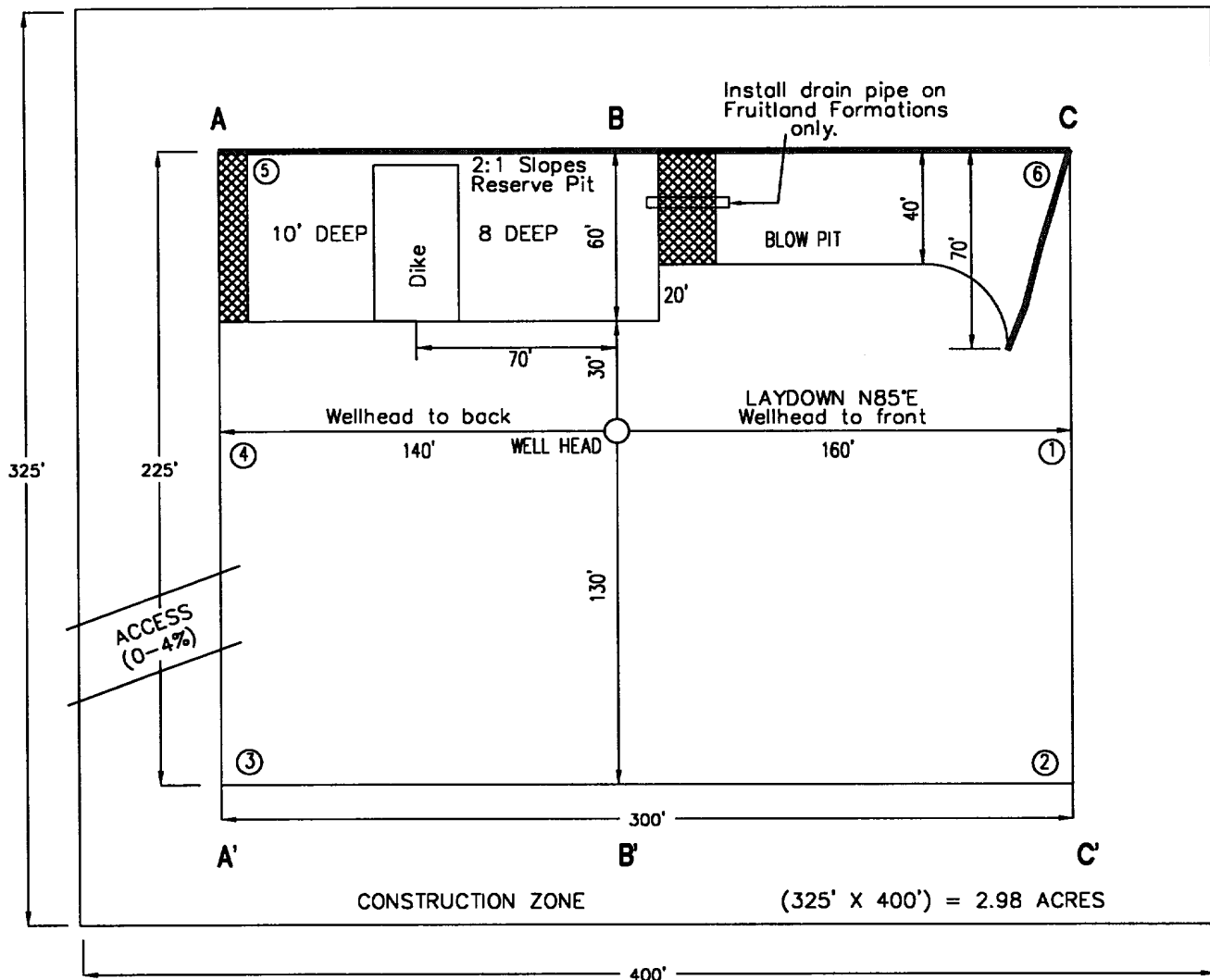
¹² Dedicated Acres 320	¹³ Joint or Infill	¹⁴ Consolidation Code	¹⁵ Order No.
---	-------------------------------	----------------------------------	-------------------------


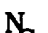

NO ALLOWABLE WILL BE ASSIGNED TO THIS COMPLETION UNTIL ALL INTERESTS HAVE BEEN CONSOLIDATED
OR A NON-STANDARD UNIT HAS BEEN APPROVED BY THE DIVISION

<div><p>¹⁶</p><p>5154.60'</p><p>1700'</p><p>1450'</p><p>4984.98'</p><p>5324.22'</p><p>5344.68'</p><p>RECEIVED JUL 29 1998 OIL CON. DIV. DIST. 3</p><p>32 RECEIVED JUL 30 1998 OIL CON. DIV. DIST. 3</p></div>	<p>¹⁷ OPERATOR CERTIFICATION</p> <p>I hereby certify that the information contained herein is true and complete to the best of my knowledge and belief</p> <p>Signature <i>Cary L. Plunkeshel</i></p> <p>Printed Name VP Operations</p> <p>Title VP Operations</p> <p>Date 7/29/98</p>
	<p>¹⁸ SURVEYOR CERTIFICATION</p> <p>I hereby certify that the well location shown on this plat was plotted from field notes of actual surveys made by me or under my supervision, and that the same is true and correct to the best of my belief.</p> <p>JUNE 30, 1998</p> <p>Date of Survey</p> <p>Signature and Seal of Professional Surveyor</p> <p>NEALE C. EDWARDS NEW MEXICO 6857 PROFESSIONAL SURVEYOR</p> <p>Certificate Number 6857</p>



GALLEGOS COM. #6E
SEC. 32, T 26 N, R 11 W
1700' FNL, 1450' FEL
SAN JUAN COUNTY, NEW MEXICO



CLIENT				Cross Timbers Operating Company		DESCRIPTION		WELLSITE LAYOUT EXHIBIT B.1			
DATE SURVEYED: 7-7-98		REVISION DATE:		DRAWN BY: J. MILLER		DATE DRAWN: 7-13-98		FILE NAME: GALL-COM6E			
SURVEYED BY				NCE SURVEYS, INC.		P.O. BOX 6612 FARMINGTON, NEW MEXICO (505) 325-2654		PREPARED BY			

CLIENT LOCATION: FARMINGTON, NEW MEXICO

LEASE: GALLEGOS COM. #6E

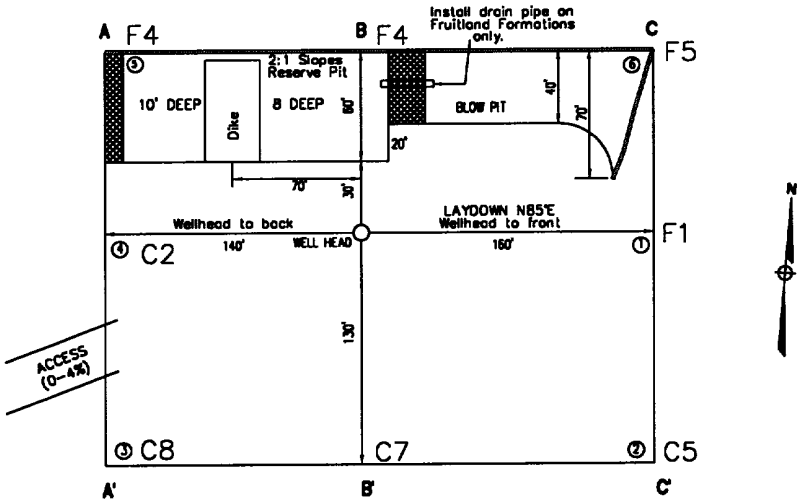
FOOTAGE: 1700' FNL, 1450' FEL

SEC. 32, T 26 N, R 11 W

DESIGNED ELEVATION: 6216'

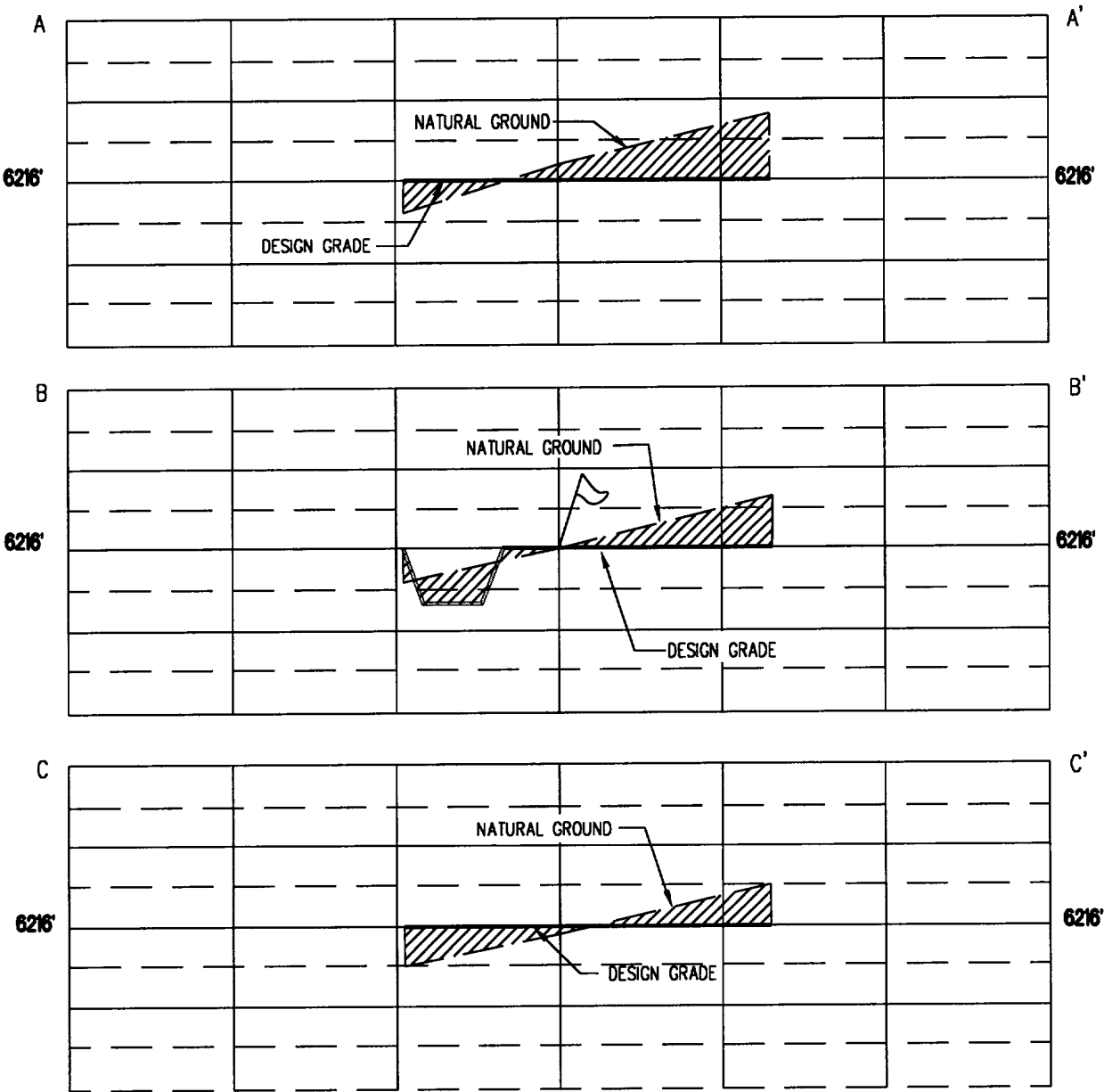
COUNTY: SAN JUAN COUNTY, NEW MEXICO


EXHIBIT B



HORIZ. SCALE: 1" = 100'
VERT. SCALE: 1" = 20'

CROSS SECTIONS



CLIENT  Cross Timbers Operating Company		DESCRIPTION WELLSITE LOCATION LAYOUT AND CROSS SECTIONS	
DATE SURVEYED: 7-7-98	REVISION DATE:	DRAWN BY: J. MILLER	DATE DRAWN: 7-13-98
SURVEYED BY NC E SURVEYS, INC.		PREPARED BY TRIGON SHEEHAN ENGINEERS & CONSTRUCTORS	