

UNITED STATES
DEPARTMENT OF THE INTERIOR
BUREAU OF LAND MANAGEMENT

APPLICATION FOR PERMIT TO DRILL, DEEPEN, OR PLUG BACK

1a. Type of Work
DRILL

1b. Type of Well
GAS

2. Operator
BURLINGTON RESOURCES Oil & Gas Company

3. Address & Phone No. of Operator
PO Box 4289, Farmington, NM 87499
(505) 326-9700

4. Location of Well
790' FNL, 790' FEL
Latitude 36° 31.3, Longitude 107° 43.0

5. Lease Number
SF-078962
Unit Reporting Number

6. If Indian, All. or Tribe

7. Unit Agreement Name

8. Farm or Lease Name
Starr

9. Well Number
1R

10. Field, Pool, Wildcat
Ballard Pictured Cliffs

11. Sec., Twn, Rge, Mer. (NMPM)
A Sec. 6, T-26-N, R-8-W
API # 30-045-30061

12. County
San Juan

13. State
NM

14. Distance in Miles from Nearest Town
12 miles from Blanco

15. Distance from Proposed Location to Nearest Property or Lease Line
790'

16. Acres in Lease

17. Acres Assigned to Well
160.57

18. Distance from Proposed Location to Nearest Well, Drig, Compl, or Applied for on this Lease
50'

19. Proposed Depth
2188'

20. Rotary or Cable Tools
Rotary

21. Elevations (DF, FT, GR, Etc.)
6137' GR

22. Approx. Date Work will Start

23. Proposed Casing and Cementing Program
See Operations Plan attached

24. Authorized by: *Regan Cole*
Regulatory/Compliance Administrator

Date 11-08-99

DRILLING OPERATIONS AUTHORIZED ARE
SUBJECT TO COMPLIANCE WITH ATTACHED
"GENERAL REQUIREMENTS"

PERMIT NO. _____ APPROVAL DATE _____

APPROVED BY *Chip Harada* TITLE *Acting Team Lead* DATE 1/11/00

Archaeological Report to be submitted

Threatened and Endangered Species Report to be submitted

NOTE: This format is issued in lieu of U.S. BLM Form 3160-3

Title 18 U.S.C. Section 1001, makes it a crime for any person knowingly and willfully to make to any department or agency of the United States any false, fictitious or fraudulent statements or presentations as to any matter within its jurisdiction.

NMOCD

District I
PO Box 1980, Hobbs, NM 88241-1980

District II
PO Drawer DD, Artesia, NM 88211-0719

District III
1000 Rio Brazos Rd., Aztec, NM 87410

District IV
PO Box 2088, Santa Fe, NM 87504-2088

State of New Mexico
Energy, Minerals & Natural Resources Department

OIL CONSERVATION DIVISION

PO Box 2088
Santa Fe, NM 87504-2088

Form C-102
Revised February 21, 1994

Instructions on back
Submit to Appropriate District Office
State Lease - 4 Copies
Fee Lease - 3 Copies

AMENDED REPORT

WELL LOCATION AND ACREAGE DEDICATION PLAT

*API Number 30-045-30061		*Pool Code 71439	*Pool Name Ballard Pictured Cliffs
*Property Code 7531	*Property Name STARR		*Well Number 1R
*GRID No. 14538	*Operator Name BURLINGTON RESOURCES OIL & GAS COMPANY		*Elevation 6137'

¹⁰ Surface Location

UL or lot no.	Section	Township	Range	Lot Idn	Feet from the	North/South line	Feet from the	East/West line	County
A	6	26N	8W		790	NORTH	790	EAST	SAN JUAN

¹¹ Bottom Hole Location If Different From Surface

UL or lot no.	Section	Township	Range	Lot Idn	Feet from the	North/South line	Feet from the	East/West line	County
¹² Dedicated Acres NE/160.57		¹³ Joint or Infill		¹⁴ Consolidation Code		¹⁵ Order No.			

NO ALLOWABLE WILL BE ASSIGNED TO THIS COMPLETION UNTIL ALL INTERESTS HAVE BEEN CONSOLIDATED
OR A NON-STANDARD UNIT HAS BEEN APPROVED BY THE DIVISION

¹⁶ 1321.98' 1249.38' LOT 4			1283.70' LOT 3			2567.40' LOT 2			¹⁷ OPERATOR CERTIFICATION I hereby certify that the information contained herein is true and complete to the best of my knowledge and belief. Signature: <i>Peggy Cole</i> Printed Name: Peggy Cole Title: Regulatory Administrator Date: 11-08-99		
1249.38' LOT 5			USA-SF-078962			1311.42' 790' 790' LOT 1			1298.88'		
2627.46' LOT 6			1303.50'			2597.76'			¹⁸ SURVEYOR CERTIFICATION I hereby certify that the well location shown on this plat was plotted from field notes of actual surveys made by me or under my supervision, and that the same is true and correct to the best of my belief. OCTOBER 1, 1999 Date of Survey Signature and Seal of Professional Surveyor: <i>NEALE C. EDWARDS</i> Certificate Number: 6857		
1298.22' LOT 7			2606.34'								

OPERATIONS PLAN

Well Name: Starr #1R
Location: 790' FNL, 790' FEL, Section 6, T-26-N, R-8-W
San Juan County, New Mexico
Latitude 36° 31.3, Longitude 107° 43.0
Formation: Ballard Pictured Cliffs
Elevation: 6137' GL

Formation:	Top	Bottom	Contents
Surface	San Jose	1080'	
Ojo Alamo	1080'	1281'	aquifer
Kirtland	1281'	1579'	gas
Fruitland	1579'	1988'	gas
Pictured Cliffs	1988'		gas
Total Depth	2188'		

Logging Program: None *Csd hole GR/CCL per P. Cole CE #*

Coring Program: None

Mud Program:

Interval	Type	Weight	Vis.	Fluid Loss
0- 120'	Spud	8.4-9.0	40-50	no control
120-2188'	FW	8.4-9.0	32-45	no control

Casing Program (as listed, equivalent, or better):

Hole Size	Depth Interval	Csg. Size	Wt.	Grade
8 3/4"	0 - 120'	7"	20#	J-55
6 1/4"	0 - 2188'	3 1/2"	9.3#	J-55

Float Equipment: 7" surface casing - saw tooth guide shoe.
Centralizers will be run in accordance with Onshore Order #2.

3 1/2" production casing - float shoe on bottom. Three centralizers run every other joint above shoe. Seven centralizers run every 3rd joint to the base of the Ojo Alamo @ 1080. Two turbolizing type centralizers - one below and one into the base of the Ojo Alamo @ 1080'. Standard centralizers thereafter every fourth joint up to the base of the surface pipe.

Wellhead Equipment: 7" x 3 1/2" 2000 psi screw on independent wellhead.

Cementing:

7" surface casing - cement with 46 sx Class "B" cement with 1/4# flocele/sx and 3% calcium chloride (54 cu.ft. of slurry, 200% excess to circulate to surface). WOC 8 hrs. Test casing to 600 psi for 30 minutes.

3 1/2" production casing - Lead w/218 sx Class "B" w/3% sodium metasilicate, 1/4 pps cellophane and 5 pps gilsonite. Tail w/50 sx 50/50 Class "B" Poz w/2% gel, 1/4 pps cellophane, 5 pps gilsonite and 2% calcium chloride (703 cu.ft. of slurry, 120% excess to circulate to surface). WOC 8 hrs. If cement does not circulate to surface, a CBL will be run during completion to determine TOC.

BOP and tests:

Surface to TD - 11" 2000 psi (minimum double gate BOP stack (Reference Figure #1 and #2). Prior to drilling out surface casing, test rams to 600 psi/30 min.

Completion - 6" 2000 psi (minimum) double gate BOP stack (Reference Figure #2). Prior to completion operations, test rams and casing to 2000 psi/15 min.

From surface to TD - choke manifold (Reference Figure #3).

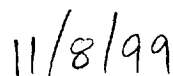
Pipe rams will be actuated to least once each day and blind rams actuated once each trip to test proper functioning. An upper kelly cock valve with handle and drill string safety valves to fit each drill string will be maintained and available on the rig floor.

Additional information:

- * The Pictured Cliffs formation will be completed.
- * Anticipated pore pressure for the Pictured Cliffs is 600 psi.
- * This gas is dedicated.
- * The northeast quarter of section 6 is dedicated to the Pictured Cliffs.

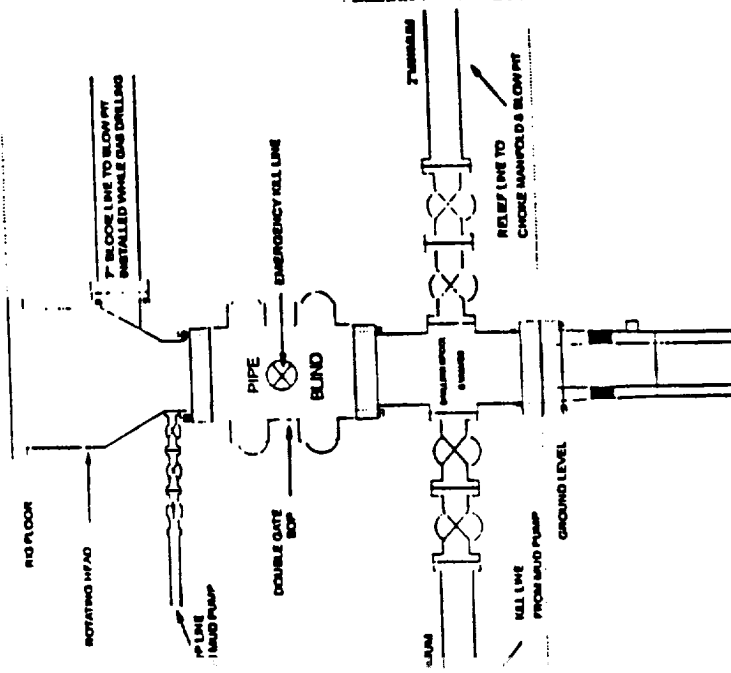


Drilling Engineer



Date

BOP Configuration 2M psi System

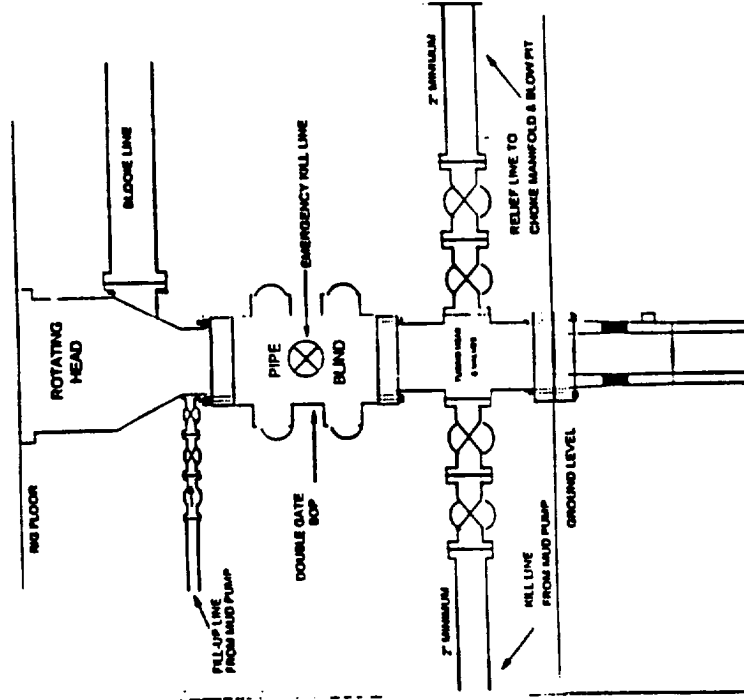


1/16\" Bore, 2000psi minimum working pressure double gate BOP to be equipped with blind end pipe rams. A Schaeffer Type 50 or equivalent rotating head to be installed on the top of the BOP. All equipment is 2000psi working pressure or better.

FIGURE #1

BURLINGTON RESOURCES

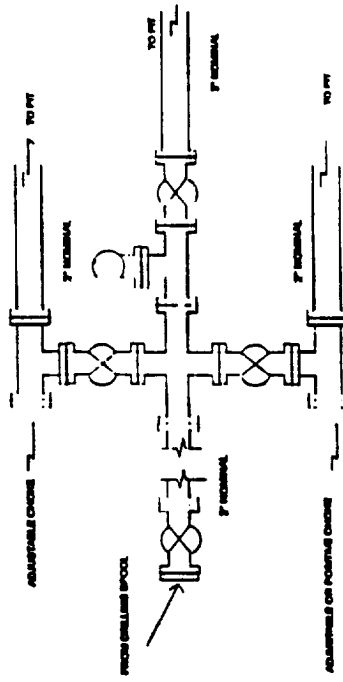
BOP Configuration 2M psi System



Minimum BOP Installation for Completion operations. 7 1/16\" Bore (6\" Nominal), 2,000 psi minimum working pressure double gate BOP to be equipped with blind end pipe rams.

FIGURE #2

Choke Manifold Configuration 2M System



Minimum choke manifold installation from surface to Total Depth, 2\" minimum, 2000psi working pressure equipment with two chokes.

Figure #3

BURLINGTON RESOURCES

Starr #1R

Multi-Point Surface Use Plan

1. Existing Roads - Refer to Map No. 1. Existing roads used to access the proposed location will be properly maintained for the duration of the project. Bureau of Land Management right-of-way has been applied for as shown on Map No. 1.
2. Planned Access Road - Refer to Map No. 1. No new access road is required.
3. Location of Existing Wells - Refer to Map No. 1A.
4. Location of Existing and/or Proposed Facilities if Well is Productive -
 - a. On the Well Pad - Refer to Plat No. 1, anticipated production facilities plat.
 - b. Off the Well Pad - Anticipated pipeline facilities as shown on the attached plat from Williams Field Services.
5. Location and Type of Water Supply - Water will be hauled by truck for the proposed project and will be obtained from San Juan River at Blanco Bridge located in SE/4 Section 18, T-29-N, R-9-W, New Mexico.
6. Source of Construction Materials - If construction materials are required for the proposed project, such materials will be obtained from a commercial quarry.
7. Methods of Handling Waste Materials - All garbage and trash materials will be removed from the site for proper disposal. A portable toilet will be provided for human waste and serviced in a proper manner. If liquids are left in the reserve pit after completion of the project, the pit will be fenced until the liquids have had adequate time to dry. The location clean-up will not take place until such time as the reserve pit can be properly covered over to prevent run-off from carrying waste materials into the watershed. Reserve pits will be lined as needed with either 12 mil bio-degradable plastic liner or a bentonite liner. All earthen pits will be so constructed as to prevent leakage from occurring; no earthen pit will be located on natural drainage. Generation of hazardous waste is not anticipated. Federal regulations will be adhered to regarding handling and disposal of such waste if so generated.
8. Ancillary Facilities - None anticipated.
9. Wellsite Layout - Refer to the location diagram and to the wellsite cut and fill diagram (Figure No. 4). The blow pit will be constructed with a 2'/160' grade to allow positive drainage to the reserve pit and prevent standing liquids in the blow pit.
10. Plans for Restoration of the Surface - After completion of the proposed project, the location will be cleaned and leveled. The location will be left in such a condition that will enable reseeding operations to be carried out. Seed mixture as designated by the responsible government agency will be used. The reseeding operations will be performed during the time period set forth by the responsible government agency. The permanent location facilities will be painted as designated by the responsible government agency.

11. Surface Ownership – Bureau of Land Management
12. Other Information - Environmental stipulations as outlined by the responsible government agency will be adhered to. Refer to the archaeological report for a description of the topography, flora, fauna, soil characteristics, dwellings, historical and cultural sites.
13. Operator's Representative and Certification - Burlington Resources Oil & Gas Company Regional Drilling Manager, Post Office Box 4289, Farmington, NM 87499, telephone (505) 326-9700. I hereby certify that I, or persons under my direct supervision, have inspected the proposed drill site and access route; that I am familiar with the conditions which presently exist; that the statements made in this plan, are to the best of my knowledge, true and correct; and that the work associated with the operations proposed herein will be performed by Burlington Resources Oil and Gas Company and its contractors and subcontractors in conformity with this plan and the terms and conditions under which it is approved.


Regulatory/Compliance Administrator 11-8-99
Date

BURLINGTON RESOURCES OIL & GAS COMPANY STARR #1R

790' FNL & 790' FEL, SECTION 6, T26N, R8W, N.M.P.M.

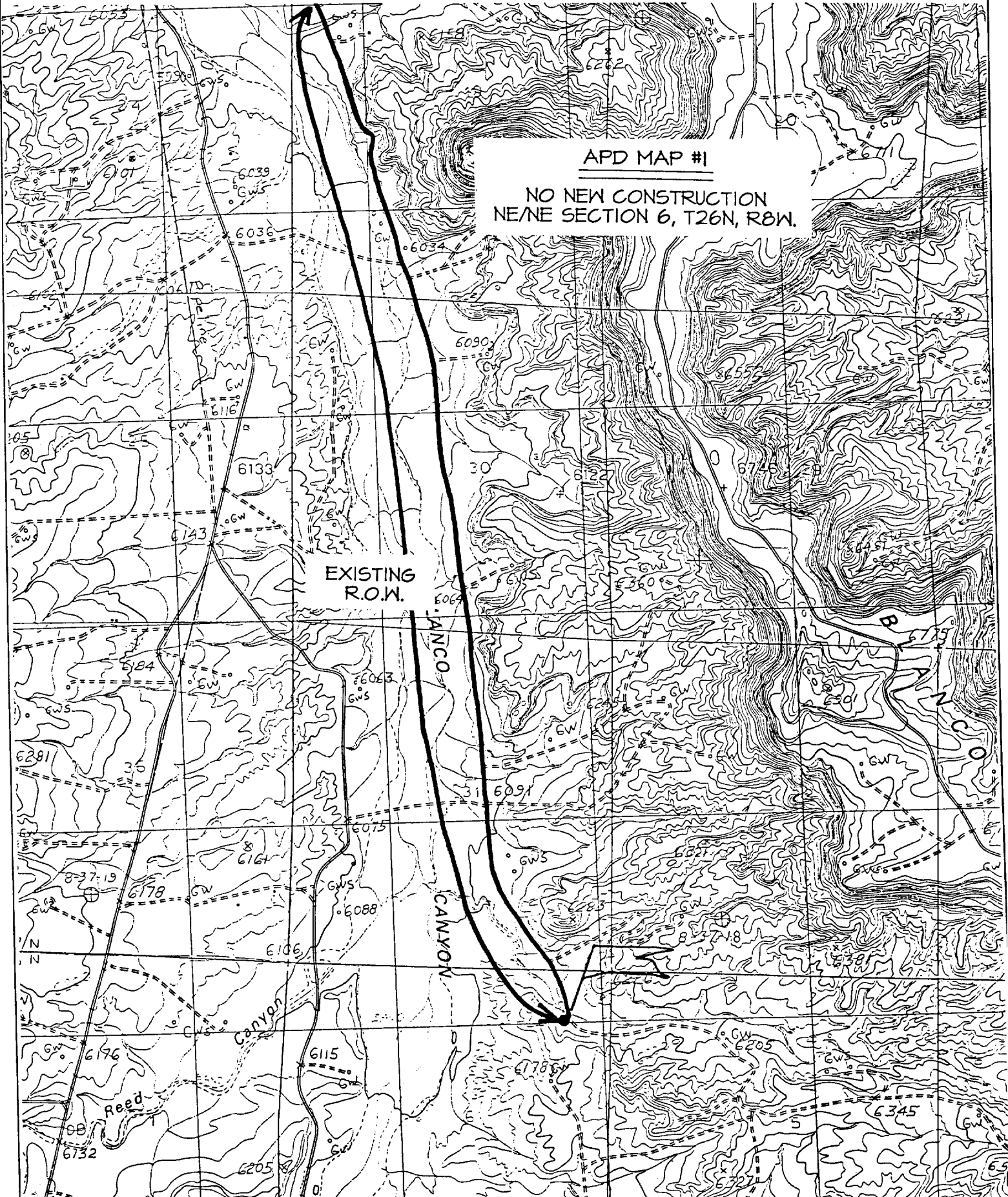
SAN JUAN COUNTY, NEW MEXICO

APD MAP #1

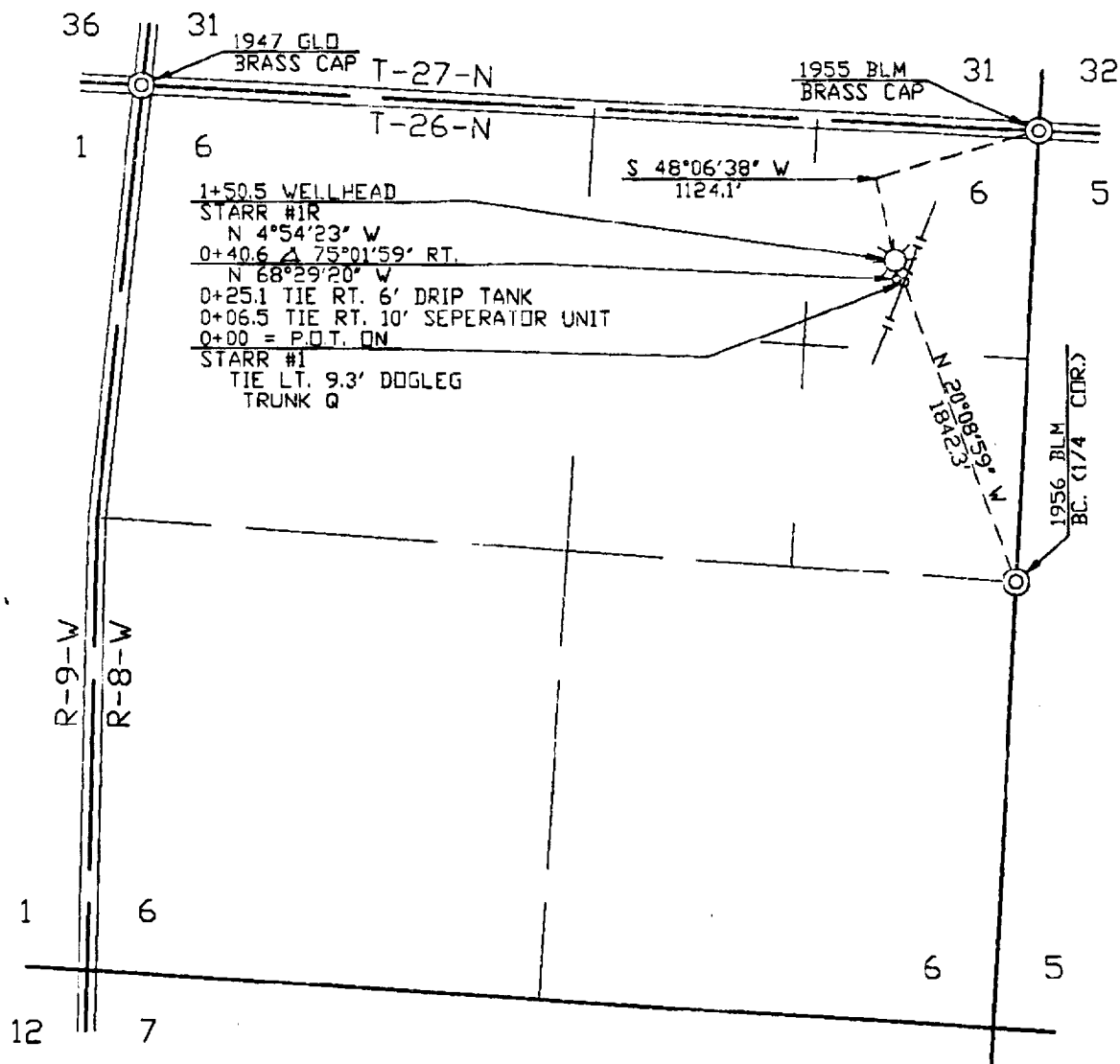
NO NEW CONSTRUCTION
NE/NE SECTION 6, T26N, R8W.

EXISTING
R.O.W.

JANCO
CANYON



NOTE: BEARINGS ARE BASED ON A GRID BEARING
ALONG THE EAST LINE OF THE NE 1/4 OF
SECTION 6, T-26-N, R-8-W, NMPM
BEARS: S 31°36' W

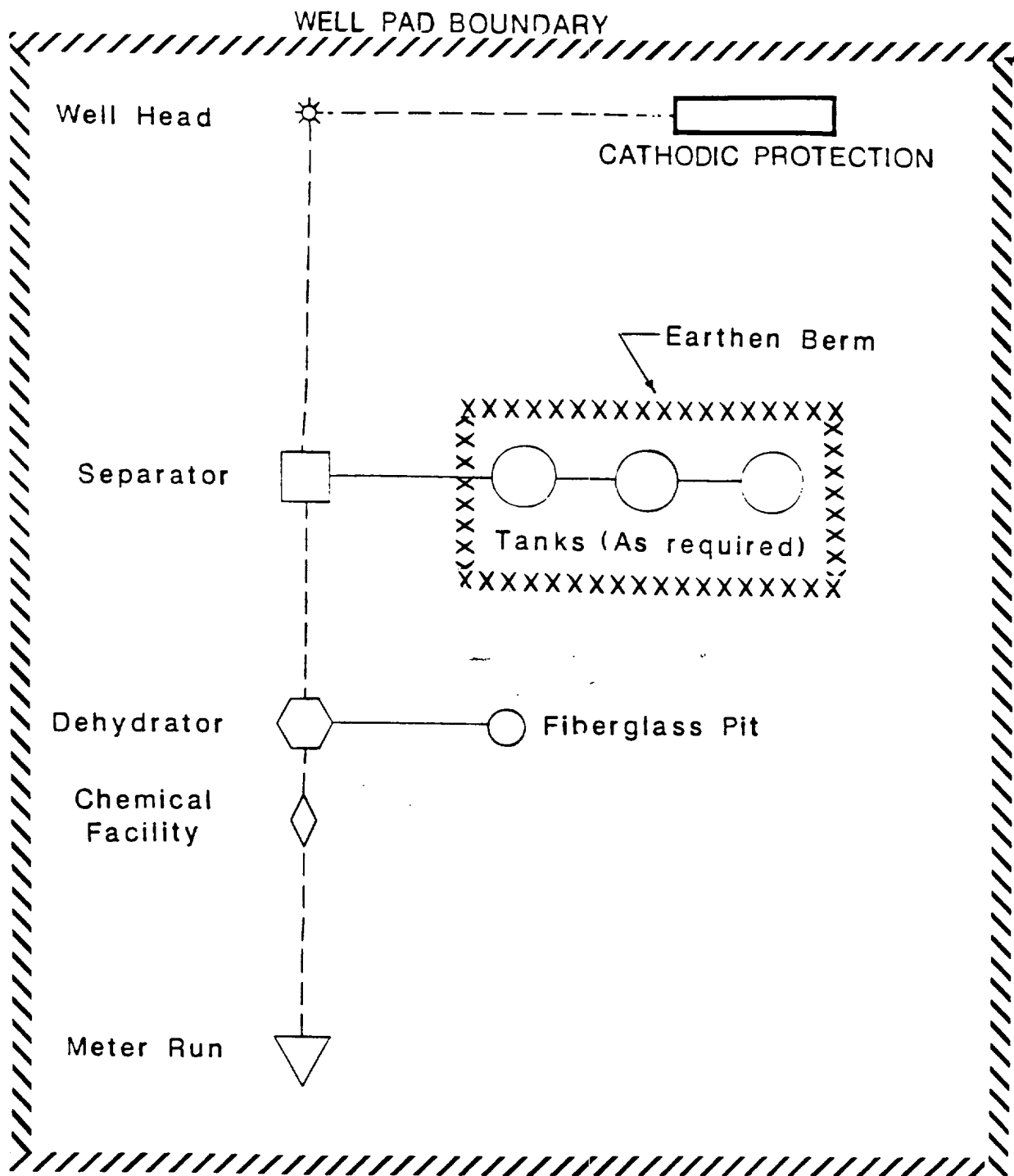


PIPE DATA

SUBDIVISION		OWNER		FEET	MILES	ACRES	RODS
0+00 TO 1+50.5		BUREAU OF LAND MANAGEMENT		150.5	0.029	0.138	9.121

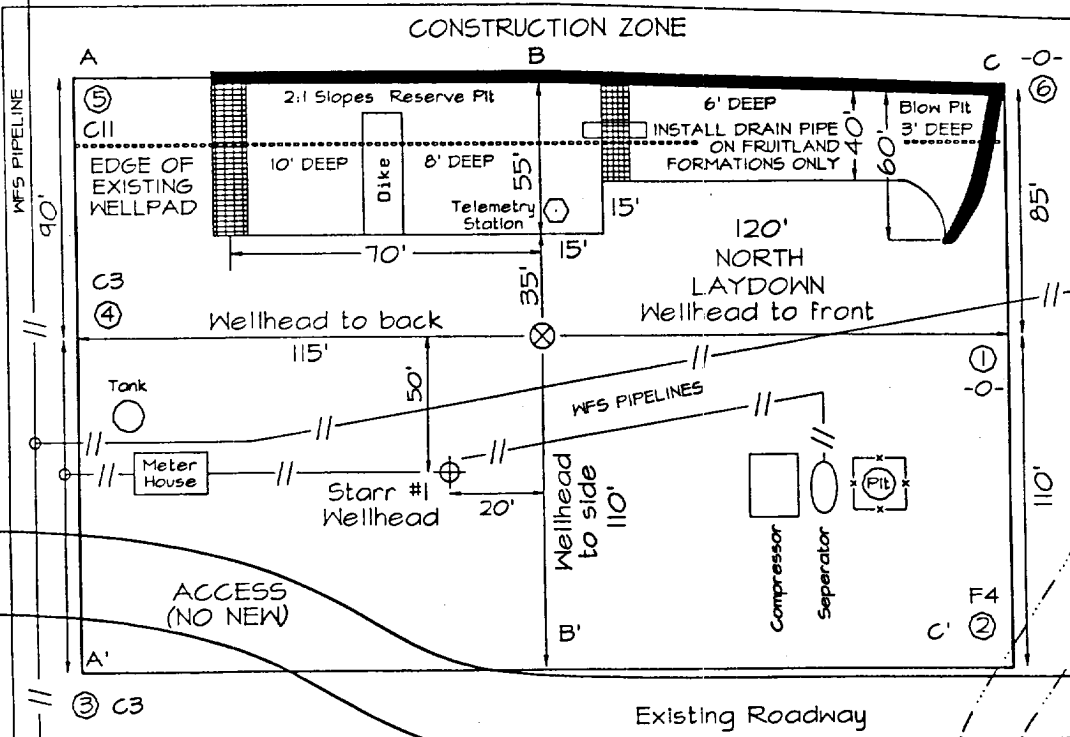
NO.	DATE	BY	DESCRIPTION	W.O.NO.	CHK.	APP.	NO.	DATE	BY	DESCRIPTION	W.O.NO.	CHK.	APP.
1	11/12/99	JH	ISSUED FOR REVIEW	FAI	RR								

INFO				STATE: NEW MEXICO		WILLIAMS GAS PROCESSING - BLANCO		
DRAFTING				COUNTY: SAN JUAN		ONE OF THE WILLIAMS COMPANIES		
R/W #:	04318	DRAWN BY	JH	11/12/99	TORRE ALTA GATHERING SYSTEM BRDG - STARR #1R 0+00 = P.O.T. ON STARR #1 (REF DWG.) SECTION 6, T-26-N, R-8-W, NMPM			
METER #:		CHECKED BY	FAI	11/12/99				
SURVEYED:	11/6/99	APPROVED BY	RR	11/15/99				
ENGINEER		BY	DATE					
DESIGNED BY				SCALE: 1" = 1000'	DWG NO. Q799.0-5-1		SHEET 1 OF 1	REV 1
PROJ. APPROVED				W.O. NO.				



ANTICIPATED
PRODUCTION FACILITIES
FOR A
PICTURED CLIFFS WELL

GROUND ELEVATION: 6137' DATE: OCTOBER 1, 1999



WELLPAD + CONSTRUCTION ZONE = 2.294 ACRES

Blow Pit: overflow pipe halfway between top and bottom and to extend over plastic liner and into blow pit.

A-A'										
6147'										
6137'										
6127'										

B-B'						
6147'						
6137'						
6127'						

C-C'						
6147'						
6137'						
6127'						

Note: Contractor should call One-Call for location of any marked or unmarked buried pipelines or cables 11 a.m. and 4 p.m. access road at least two (2) working days prior to construction.