

UNITED STATES
DEPARTMENT OF THE INTERIOR
BUREAU OF LAND MANAGEMENT
APPLICATION FOR PERMIT TO DRILL OR REENTER

FORM APPROVED
OMB No. 1004-0136
Expires November 30, 2000

a. Type of Work: <input checked="" type="checkbox"/> DRILL <input type="checkbox"/> REENTER		5. Lease Serial No. NOO-C-14-20-4324	
b. Type of Well: <input type="checkbox"/> Oil Well <input checked="" type="checkbox"/> Gas Well <input type="checkbox"/> Other <input checked="" type="checkbox"/> Single Zone <input type="checkbox"/> Multiple Zone		6. Indian, Allottee or Tribe Name Navajo Allotted	
2. Name of Operator Coleman Oil and Gas Company		7. If Unit or CA Agreement, Name and No. Chaco Plant #17Y	
3a. Address c/o Walsh Engineering, 7415 E. Main, Farmington, NM 87402		9. API Well No. 30-045-30971	
3b. Phone No. (include area code) 505.327.4892		10. Field and Pool, or Exploratory S. Vallejo Fruitland Sand/PL	
4. Location of Well (Report location clearly and in accordance with any State requirements. *) At surface 1795' FNL and 975' FEL At proposed prod. Zone 14. Distance in miles and direction from nearest town or post office* 15 miles south of Farmington, NM		11. Sec., T., R., M., or Blk. and Survey or Area H Section 14, T26N, R12W	
16. No. of Acres in lease 160		17. Spacing Unit dedicated to this well 160 acres NE/4	
18. Distance from proposed* location to nearest property or lease line, ft. (Also to nearest drig. unit line, if any) 845'		20. BLM/BIA Bond No. on file 013002853	
19. Proposed Depth 1475'		23. Estimated duration 2 weeks	
21. Elevations (Show whether DF, KDB, RT, GL, etc.) 6127' GL		22. Approximate date work will start* March 2002	

24. Attachments

The following, completed in accordance with the requirements of Onshore Oil and Gas Order No. 1, shall be attached to this form:

- This action is subject to technical and procedural review pursuant to 43 CFR 3165.3 and appeal pursuant to 43 CFR 3165.4.
- Well plat certified by a professional surveyor pursuant to 43 CFR 3165.3
 - A Drilling Plan.
 - A Surface Use Plan (if the location is on National Forest System Lands, the SUPO shall be filed with the appropriate Forest Service Office.
 - Bond to cover the operations unless covered by an existing bond on file (see Item 20 above).
 - Operator certification.
 - Such other site specific information and/or plans as may be required by the authorized office.

25. Signature <i>Paul C. Thompson</i>	Name (Printed/Typed) Paul C. Thompson, P.E.	Date 1/4/02
Agent		
Approved by (Signature) <i>Chip Harraden</i>	Name (Printed/Typed) Chip Harraden	Date 5/16/02
Title Geologist PMT	Office BLM-FFO	

Application approval does not warrant or certify that the applicant holds legal or equitable title to those rights in the subject lease which would entitle the applicant to conduct operations thereon.

Conditions of approval, if any, are attached.

Title 18 U.S.C. Section 1001 and Title 43 U.S.C. Section 1212, make it a crime for any person knowingly and willfully to make to any department or agency of the United States any false, fictitious or fraudulent statements or representations as to any matter within its jurisdiction.

*(Instructions on reverse)

HOLD C14 FOR Chaco Plant #17R

District I
PO Box 1980, Hobbs, NM 88241-1980

District II
PO Drawer DD, Artesia, NM 88211-0719

District III
1000 Rio Brazos Rd., Aztec, NM 87410

District IV
PO Box 2088, Santa Fe, NM 87504-2088

State of New Mexico
Energy, Minerals & Natural Resources Department

OIL CONSERVATION DIVISION
PO Box 2088
Santa Fe, NM 87504-2088

Form C-102
Revised February 21, 1994
Instructions on back
Submit to Appropriate District Office
State Lease - 4 Copies
Fee Lease - 3 Copies

☐ AMENDED REPORT

WELL LOCATION AND ACREAGE DEDICATION PLAT

*API Number 30-045-30971		*Pool Code 77310	*Pool Name South Gallegos Fruitland San/Piedra Cliffs	
*Property Code 24002	*Property Name CHACO PLANT			*Well Number 17Y
*GRID No. 004838	*Operator Name COLEMAN OIL & GAS, INC.			*Elevation 6127'

10 Surface Location

UL or lot no.	Section	Township	Range	Lot Idn	Feet from the	North/South line	Feet from the	East/West line	County
H	14	26N	12W		1795	NORTH	975	EAST	SAN JUAN

11 Bottom Hole Location If Different From Surface

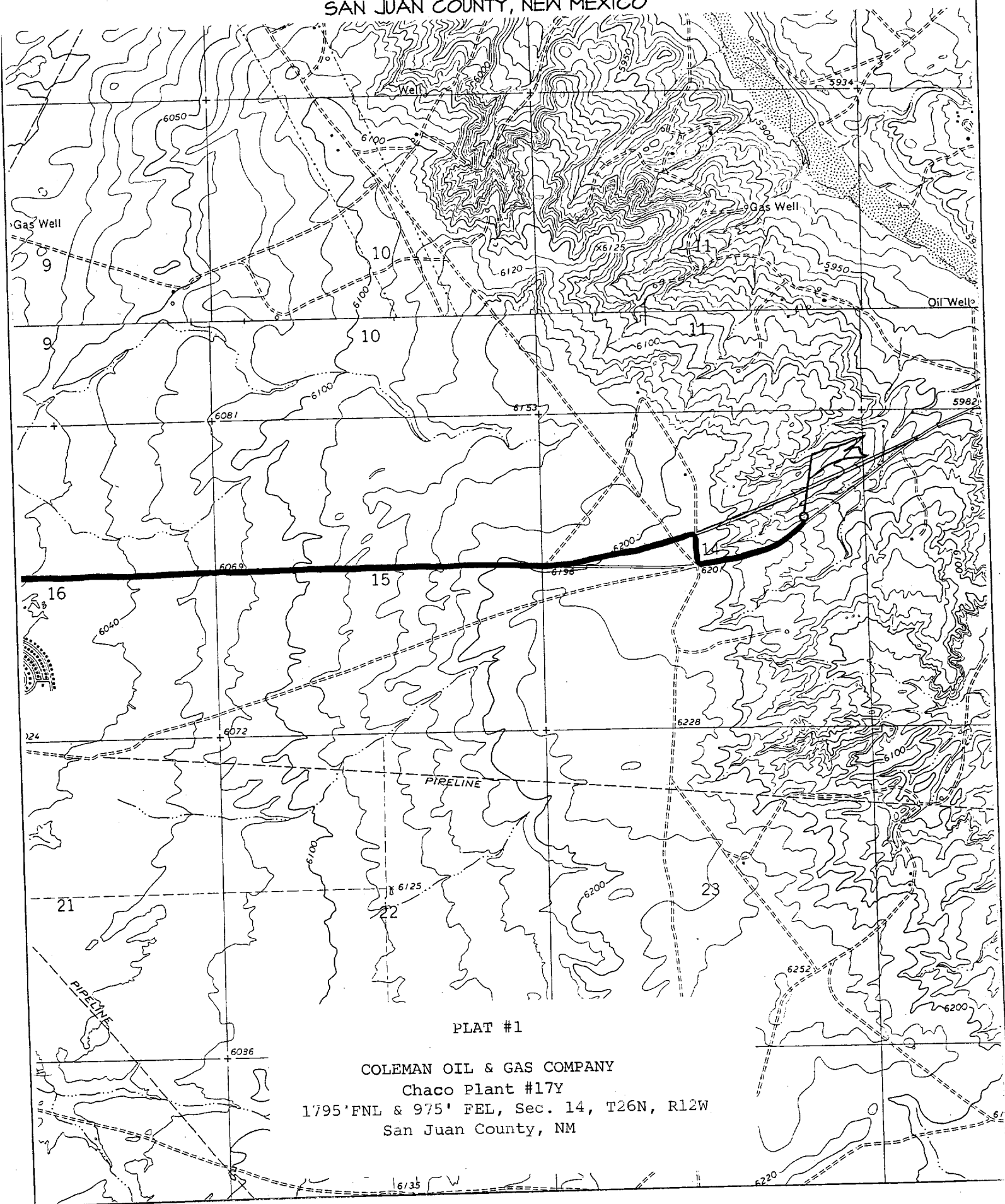
UL or lot no.	Section	Township	Range	Lot Idn	Feet from the	North/South line	Feet from the	East/West line	County

12 Dedicated Acres 160	13 Joint or Infill N	14 Consolidation Code	15 Order No.
----------------------------------	--------------------------------	-----------------------	--------------

NO ALLOWABLE WILL BE ASSIGNED TO THIS COMPLETION UNTIL ALL INTERESTS HAVE BEEN CONSOLIDATED
OR A NON-STANDARD UNIT HAS BEEN APPROVED BY THE DIVISION

	17 OPERATOR CERTIFICATION I hereby certify that the information contained herein is true and complete to the best of my knowledge and belief.	
	Signature <i>Paul C. Thompson</i>	
	Printed Name Paul C. Thompson	
	Title Agent	
Date 1/4/02		18 SURVEYOR CERTIFICATION I hereby certify that the well location shown on this plat was plotted from field notes of actual surveys made by me or under my supervision, and that the same is true and correct to the best of my belief.
Date of Survey JANUARY 20, 2001		
Signature and Seal 		
Certificate Number 6857		

COLEMAN OIL & GAS INC. CHACO PLANT #17Y
1795' FNL & 975' FEL, SECTION 14, T26N, R12W, N.M.P.M.
SAN JUAN COUNTY, NEW MEXICO



PLAT #1

COLEMAN OIL & GAS COMPANY
Chaco Plant #17Y
1795' FNL & 975' FEL, Sec. 14, T26N, R12W
San Juan County, NM

COLEMAN OIL AND GAS
OPERATIONS PLAN
Chaco Plant #1Y

Date: Jan. 4, 2002

I. Location: 1795' FNL & 975' FEL
Sec 14 T26N R12W
San Juan County, NM

Field: Basin Fruitland Coal
Surface: Navajo Allotted
Minerals: NOO-C-14-20-4324

Elev: GL 6127'

II. Geology: Surface formation _ Nacimiento

A. Formation Tops	Depths
Ojo Alamo	50'
Kirtland	345'
Fruitland	1130'
Fruitland Coal	1320'
Pictured Cliffs	1339'
Total Depth	1475'

Estimated depths of anticipated water, oil, gas, and other mineral bearing formations which are expected to be encountered:

Water and gas - 1130' and 1339'.

B. Logging Program: None.

C. No over pressured zones are expected in this well. No H₂S zones will be penetrated in this well. Max. BHP = 500 psig.

III. Drilling

A. Contractor:

B. Mud Program:

The surface hole will be drilled with a fresh water mud.

The production hole will be drilled with a fresh water polymer mud. The weighting material will be drill solids or if conditions dictate, barite. The maximum mud weight expected is 8.5 ppg.

C. Minimum Blowout Control Specifications:

Double ram type or annular type 2000 psi working pressure BOP with a rotating head. See the attached exhibits (#1 through #3) for details on the BOP equipment. All ram type preventers and related equipment will be hydraulically tested at nipple-up and after any use under pressure to 1000 psi.

C. Cont.

The blind rams will be hydraulically activated and checked for operational readiness each time pipe is pulled out of the hole. All checks of the BOP stack and equipment will be noted on the daily drilling report. The BOP equipment will include a kelly cock, floor safety valve, and choke manifold all rated to 2000 psi.

IV. Materials

A. Casing Program:

Hole Size	Depth	Casing Size	Wt. & Grade
8-3/4"	120'	7"	20# J-55
6-1/4"	1475'	4-1/2"	10.5# J-55

B. Float Equipment:

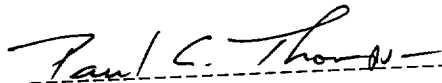
a) Surface Casing: None

b) Production Casing: 4-1/2" cement guide shoe and self fill insert float collar. Place float one joint above shoe. Five centralizers spaced every other joint above shoe and five turbolizers every other joint from the top of the well.

V. Cementing:

Surface casing: 7" - Use 30 sx (36 cu. ft.) of Cl "B" with 2% CaCl₂ and ¼ #/sk. celloflake. Yield = 1.18 cu. ft./sk; slurry weight = 15.6 PPG). 100% excess to circulate cement to surface. WOC 12 hours. Pressure test surface casing to 600 psi for 30 min.

Production Casing: 4-1/2" - Before cementing circulate hole with at least 1-1/2 hole volumes of mud. Precede cement with 30 bbls of fresh water. Lead with 110 sx (227 cu.ft) of Cl "B" with 2% metasilicate and ¼ #/sk. celloflake. (Yield = 2.06 cu.ft./sk; slurry weight = 12.5 PPG). Tail with 75 sx (89 cu.ft.) of Cl "B" with 2% CaCl₂ and ¼ #/sk. celloflake (Yield = 1.18 cu. ft./sk; slurry weight = 15.6 PPG). Total cement volume is 316 cu.ft. (100% excess to circulate cement to surface).


Paul C. Thompson, P.E.