

MEXICO OIL COMPANY SUPERVISOR'S COMMISSION
WELL LOCATION AND ACREAGE DEDICATION PLAT

Form 10-1
 Supervisor's Use
 Edition 1-1-77

All distances must be from the outer boundaries of the Section.

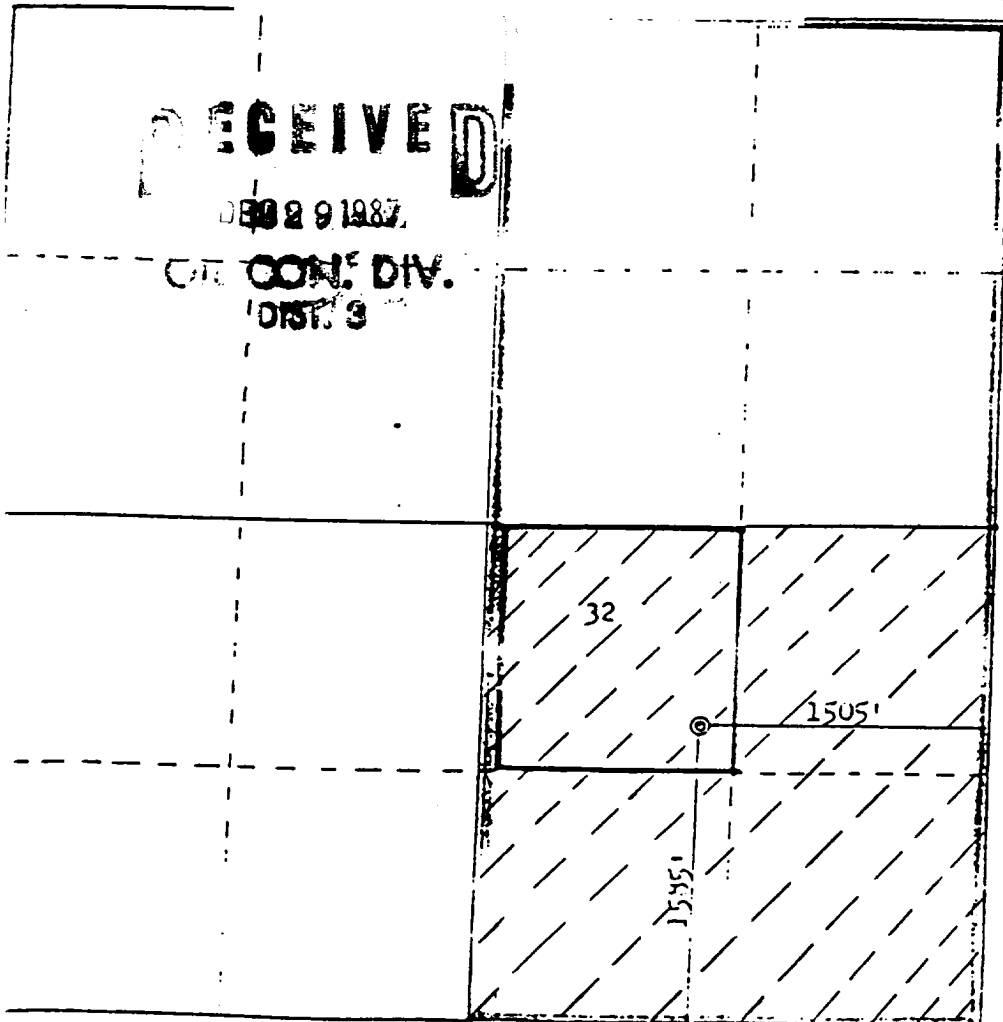
Operator Robert L. Bayless			Lease JICARILLA CONTRACT 491		Well No. 1
Unit Letter J	Section 32	Township 28N	Range 2W	County Rio Arriba	
Actual Footage Location of Well: 1585 feet from the South line and 1505 feet from the East line					
Ground Level Elev. 7115	Producing Formation Pictured Cliffs		Pool Undesignated Pictured Cliffs		Dedicated Acreage: 160 Acres

- Outline the acreage dedicated to the subject well by colored pencil or hachure marks on the plat below.
- If more than one lease is dedicated to the well, outline each and identify the ownership thereof (both as to working interest and royalty).
- If more than one lease of different ownership is dedicated to the well, have the interests of all owners been consolidated by communitization, unitization, force-pooling, etc?

Yes No If answer is "yes," type of consolidation _____

If answer is "no," list the owners and tract descriptions which have actually been consolidated. (Use reverse side of this form if necessary.) _____

No allowable will be assigned to the well until all interests have been consolidated (by communitization, unitization, forced-pooling, or otherwise) or until a non-standard unit, eliminating such interests, has been approved by the Commission.



RECEIVED
 SEP 29 1987
 OIL CON. DIV.
 DIST. 3

CERTIFICATION

I hereby certify that the information contained herein is true and complete to the best of my knowledge and belief.

Robert L. Bayless
 Position
Operator

Company
Robert L. Bayless

Date
9/24/87

I hereby certify that the well location shown on this plat was plotted from field notes of actual surveys made by me or under my supervision, and that the same is true and correct to the best of my knowledge and belief.

Date Surveyed
May 26, 1985

Registered Professional Engineer
Frederick J. ...
 State of New Mexico