

Daily Report

A - PLUS WELL SERVICE

14649

P.O. BOX 1979 • FARMINGTON, NM 87499
505-325-2627 • FAX (505) 325-1211

Rig No 6

Date 3-15-99

Well No TABLE MESA SA Location Sec 3 T27N R12W Company TABLE MESA P/A Project NMOCID

| FROM | TO | DESCRIPTION OF OPERATION |
|------|-------|--|
| 5:30 | 5:45 | hauled supplies |
| 5:45 | 7:00 | DRIVE TO LOC Held safety meeting rigging down |
| 7:00 | | NLD BOP's & flanges |
| | 8:00 | cut-off 13 3/8 csg cement down 15' ^{TOP OFF CSG} |
| 8:00 | 9:30 | RD PT 105 & Rig |
| 9:30 | 12:00 | wait on orders from NMOCID |
| | | (6 1/2 HRS) |
| | | RECEIVED MAR 16 1999 OIL CON. DIV. DIST. 3 |
| | | <i>Henry Villanueva / NMOCID on loc.</i> |

Fuel & Motor Oil _____ Water Hauled _____
 Rental Equipment _____ Cement Retainers _____
 Cementing dry hole marker 20scc
 Wireline _____

| CREW | NAME | UNIT # | MILEAGE | HOURS |
|------------|-------------------------|--------|---------|-------|
| Supervisor | <i>Bill Randall</i> | 12 | | |
| Operator | <i>Steve Stuart</i> | 20 | 27,985 | 6 1/2 |
| Helper | <i>Victoria Celis</i> | | | 6 1/2 |
| Helper | <i>Robert Velazquez</i> | | | 6 1/2 |
| Helper | <i>Doug Herson</i> | | | 6 1/2 |

DISTRICT I
P.O. Box 1900, Hobbs, N.M. 88241-1900

State of New Mexico
Geology, Minerals & Natural Resources Department

Form C-102
Revised February 21, 1994
Instructions on back
Submit to Appropriate District Office
State Lease - 4 Copies
Fee Lease - 3 Copies

DISTRICT II
P.O. Drawer DD, Artesia, N.M. 88211-0719

OIL CONSERVATION DIVISION
P.O. Box 2088
Santa Fe, NM 87504-2088

DISTRICT III
1000 Rio Brazos Rd., Artec, N.M. 87410

DISTRICT IV
PO Box 2066, Santa Fe, NM 87504-2066

AMENDED REPORT

WELL LOCATION AND ACREAGE DEDICATION PLAT

| | | | | | |
|---|--|---|--|--|---------------------------------|
| ¹ API Number 30-039-25902 | | ² Pool Code 96822 | | ³ Pool Name Cabresto Canyon; San Jose Ext. | |
| ⁴ Property Code | | ⁵ Property Name Jicarilla 457-9 | | | ⁶ Well Number #1 |
| ⁷ OGRM No. 013925 | | ⁸ Operator Name Mallon Oil Co. | | | ⁹ Elevation 7238' |

¹⁰Surface Location

| UL or lot no. | Section | Township | Range | Lot Idn | Feet from the | North/South line | Feet from the | East/West line | County |
|---------------|---------|----------|-------|---------|---------------|------------------|---------------|----------------|------------|
| | 9 | 30 N | 3 W | | 1150 | South | 1191 | East | Rio Arriba |

¹¹Bottom Hole Location If Different From Surface

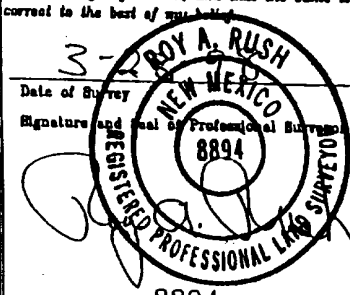
| UL or lot no. | Section | Township | Range | Lot Idn | Feet from the | North/South line | Feet from the | East/West line | County |
|---------------|---------|----------|-------|---------|---------------|------------------|---------------|----------------|--------|
| | | | | | | | | | |

| | | | |
|--------------------------------------|-------------------------------|----------------------------------|-------------------------|
| ¹² Dedicated Acres 160 | ¹³ Joint or Infill | ¹⁴ Consolidation Code | ¹⁵ Order No. |
|--------------------------------------|-------------------------------|----------------------------------|-------------------------|

NO ALLOWABLE WILL BE ASSIGNED TO THIS COMPLETION UNTIL ALL INTERESTS HAVE BEEN CONSOLIDATED OR A NON-STANDARD UNIT HAS BEEN APPROVED BY THE DIVISION

| | | | | | |
|-----------|------------|-----------|---------|---|---|
| 16 | 1917 B.C. | Set Stone | 5145.4' | <p>17 OPERATOR CERTIFICATION I hereby certify that the information contained herein is true and complete to the best of my knowledge and belief</p> <p>Signature: <u>Terry Lindeman</u> Printed Name: Terry Lindeman Title: Operations Superintendent Date: 6-2-98</p> | |
| | | | | | <p>18 SURVEYOR CERTIFICATION I hereby certify that the well location shown on this plat was plotted from field notes of actual surveys made by me or under my supervision, and that the same is true and correct to the best of my belief.</p> <p>Date of Survey: <u>3-2-98</u> Signature and Seal of Professional Surveyor: <u>[Signature]</u> Certificate Number: 8894</p> |
| | | | | | |
| | | | 1150' | | |
| 1917 B.C. | S89-56-34E | 5284.4' | | 1917 B.C. Exhibit A | |

RECEIVED
JAN - 8 1998
OIL CON. DIV.
DIST. 3



UNITED STATES
DEPARTMENT OF THE INTERIOR
BUREAU OF LAND MANAGEMENT

FORM APPROVED
Budget Bureau No. 1004-0135
Expires: March 31, 1993

5. Lease Designation and Serial No.
CA-156

6. If Indian, Allottee or Tribe Name
Jicarilla Apache

7. If Unit or CA, Agreement Designation
N/A

8. Well Name and No.
Jicarilla D 156 2

9. API Well No.
30-039-05091

10. Field and Pool, or Exploratory Area
Blanco Pictured Cliffs

11. County or Parish, State
Rio Arriba Co., NM

SUNDRY NOTICES AND REPORTS ON WELLS

Do not use this form for proposals to drill or to deepen or reentry to a different reservoir.
Use "APPLICATION FOR PERMIT—" for such proposals

SUBMIT IN TRIPLICATE

1. Type of Well
 Oil Well Gas Well Other

2. Name of Operator
RIO CHAMA PETROLEUM INC.

3. Address and Telephone No.
P O Box 23553, Santa Fe, NM 87502 (505) 986-9723

4. Location of Well (Footage, Sec., T., R., M., or Survey Description)
Unit Letter J, 1787 FSL & 1590 FEL
Sec. 11, T23N-R2W

12. CHECK APPROPRIATE BOX(S) TO INDICATE NATURE OF NOTICE, REPORT, OR OTHER DATA

| TYPE OF SUBMISSION | TYPE OF ACTION |
|---|---|
| <input type="checkbox"/> Notice of Intent | <input type="checkbox"/> Abandonment |
| <input type="checkbox"/> Subsequent Report | <input type="checkbox"/> Recompletion |
| <input type="checkbox"/> Final Abandonment Notice | <input type="checkbox"/> Plugging Back |
| | <input type="checkbox"/> Casing Repair |
| | <input type="checkbox"/> Altering Casing |
| | <input checked="" type="checkbox"/> Other <u>CHANGE OF OPERATOR</u> |
| | <input type="checkbox"/> Change of Plans |
| | <input type="checkbox"/> New Construction |
| | <input type="checkbox"/> Non-Routine Fracturing |
| | <input type="checkbox"/> Water Shut-Off |
| | <input type="checkbox"/> Conversion to Injection |
| | <input type="checkbox"/> Dispose Water |

(Note: Report results of multiple completion on Well Completion or Recompletion Report and Log form.)

13. Describe Proposed or Completed Operations (Clearly state all pertinent details, and give pertinent dates, including estimated date of starting any proposed work. If well is directionally drilled, give subsurface locations and measured and true vertical depths for all markers and zones pertinent to this work.)*

CHANGE OF OWNERSHIP AND OPERATOR FROM EOG (NEW MEXICO) INC. TO
RIO CHAMA PETROLEUM INC. EFFECTIVE OCTOBER 1, 1996

14. I hereby certify that the foregoing is true and correct

Signed J. Craig Creel Title PRESIDENT Date DEC 10 1996

(This space for Federal or State office use)

Approved by _____ Title ACCEPTED FOR RECORD Date _____
Conditions of approval, if any: _____

Title 18 U.S.C. Section 1001, makes it a crime for any person knowingly and willfully to make to any department or agency of the United States any false, fictitious or fraudulent statements or representations as to any matter within its jurisdiction.

Daily Report

A - PLUS WELL SERVICE

P.O. BOX 1979 • FARMINGTON, NM 87409
505-325-2627 • FAX (505) 325-1211

10607

Rig No 6

Date 3-10-99

Well No TABLA AREA #517 Location Sec 3 T27N, R17W Company NIMROD
TABLA AREA P/A Project

| FROM | TO | DESCRIPTION OF OPERATION |
|------|------|---|
| 5:30 | 5:45 | load supplies |
| 5:45 | 7:00 | DRWS TO HOLE held safety meeting (paper lifting) |
| 7:00 | | TLD w/ 16' its & tag at at 5420', w/ 22' stick-up, top of 605 pickup swivel, drill + cement 16' |
| | 8:30 | circulate down to 605, pickup its #18 |
| 8:30 | | start drilling again on Pkg #3, start drilling at 605 |
| | 4:00 | Real hard cement cement from 605 to 605; no torque |
| | 4:00 | circulate hole clean |
| 4:00 | | lay down swivel of 1 ft. got stuck in hole |
| | | shut-in at 636', attempted to circulate |
| | | pressured up to 1000#, pulled on tag, |
| | 5:00 | tag parted at 60,000# |
| 5:00 | 5:30 | stand back 9 stans of tag 1 ft down |
| 5:30 | 6:00 | shut-in well, drain-up, |
| | | left 2-3/4 D.C + |
| | | 4 3/4 bit + sub in hole |
| | | 3 1/2 x 2 7/8 IF X O |
| | | 2 1/2 x 2 3/4 X O |

Abh procedures approved by Henry Villanueva
NIMROD on hole.

Fuel & Motor Oil 60g. Right, 30g. 124 Water Hauled _____
Rental Equipment _____ Cement Retainers _____
Cementing _____
Wireline _____

| CREW | NAME | UNIT # | MILEAGE | HOURS |
|------------|------------------|--------|---------|--------|
| Supervisor | Bill Randall | 12 | 97528 | |
| Operator | SAM Stewart | 20 | 27647 | 12 1/2 |
| Helper | Victor Celis | | | 12 1/2 |
| Helper | Robert Velasquez | | | 12 1/2 |
| Helper | Doug Hearn | 124 | | 14 |

District I
 PO Box 1980, Hobbs, NM 88241-1980
 District II
 811 South First, Artesia, NM 88210
 District III
 1000 Rio Brazos Rd., Aztec, NM 87410
 District IV
 7940 South Pacheco, Santa Fe, NM 87505

State of New Mexico
 Energy, Minerals & Natural Resources Department
OIL CONSERVATION DIVISION
 2040 South Pacheco
 Santa Fe, NM 87505

Form C-102
 Revised October 11, 1994
 Instructions on back
 Submit to Appropriate District Office
 State Lease - 4 Copies
 Fee Lease - 3 Copies
 AMENDED REPORT

WELL LOCATION AND ACREAGE DEDICATION PLAT

| | | |
|---------------------------------------|--|--|
| ¹ API Number 3004511630 | ⁷ Pool Code 79680 | ² Pool Name Kutz Pictured Cliffs, West (Gas) |
| ⁴ Property Code 000570 | ² Property Name Gallegos Canyon Unit | |
| ⁷ OGRID No. 000778 | ⁸ Operator Name Amoco Production Company | |

| | | | | | | | | | |
|--------------------|---------------|-----------------|--------------|---------|------------------------|---------------------------|-----------------------|------------------------|-------------------|
| UT or lot no. M | Section 26 | Township 28N | Range 12W | Lot/Idn | Feet from the 1190' | North/South Line South | Feet from the 990' | East/West Line West | County Sanduan |
|--------------------|---------------|-----------------|--------------|---------|------------------------|---------------------------|-----------------------|------------------------|-------------------|

| | | | | | | | | | |
|--|---------|----------|-------|---------|---------------|------------------|---------------|----------------|--------|
| 11 Bottom Hole Location If Different From Surface | | | | | | | | | |
| UT or lot no. | Section | Township | Range | Lot/Idn | Feet from the | North/South Line | Feet from the | East/West Line | County |

| | | | |
|---|-------------------------------|----------------------------------|----------------------------|
| ¹² Dedicated Acres 160.00 | ¹³ Joint or Infill | ¹⁴ Consolidation Code | ¹⁵ Order Number |
|---|-------------------------------|----------------------------------|----------------------------|

NO ALLOWABLE WILL BE ASSIGNED TO THIS COMPLETION UNTIL ALL INTERESTS HAVE BEEN CONSOLIDATED OR A NON-STANDARD UNIT HAS BEEN APPROVED BY THE DIVISION

| | | | | |
|---|---|--|------------------|-----------------|
| ¹⁷ OPERATOR CERTIFICATION I hereby certify that the information contained herein is true and complete to the best of my knowledge and belief. | Signature Gail M. Jefferson | Printed Name Sr. Admn. Staff Asst. | Title 11/2/98 | Date 11/2/98 |
| | ¹⁸ SURVEYOR CERTIFICATION I hereby certify that the well location shown on this plat was plotted from field notes of actual surveys made by me or under my supervision, and that the same is true and correct to the best of my belief. | | | |
| ¹⁶ | Date of Survey February 2, 1966 | Signature and Seal of Professional Surveyor: James P. Leese 1463 Certificate Number | 990' 1190' | |
| | | | | |

NEW MEXICO OIL CONSERVATION COMMISSION
 1000 Rio Brazos Road
 Aztec, New Mexico

BRADENHEAD TEST REPORT
 (Submit 3 copies to above address)

Date of Test 2-17-98 Operator CHATEAU OIL AND GAS, INC.
 Lease Name Tribal Well No. G4 Location U P Sec 06 Twp 26N Rge 03W
 Pressure (Shut-in or Flowing) Dwt. 80 Tubing 80 Casing 80 Bradenhead 0
 OPEN BRADENHEAD TO ATMOSPHERE FOR 15 MINUTES

| 5 Min | 10 Min | 15 Min | 20 Min | 25 Min | 30 Min |
|-----------------|--------|--------|--------|--------|--------|
| Steady Flow | | | | | |
| Surges | | | | | |
| Down to Nothing | | | X | | |
| Nothing | | | | | |
| Gas | | | | | |
| Gas & Water | | | | | |
| Water | | | | | |

If Bradenhead flowed water check description below:

Clear _____
 Fresh _____
 Salty _____
 Sulfur _____
 Black _____

Remarks: _____

By [Signature]
 Position Inspector
 Witness _____

| Well Name | | Day: | Work Date: | | |
|--|--|-------|------------|---------------|-------------|
| TABLE Mesa SA | | 1 | 3-9-99 | | |
| Company | | Hours | Rate | \$ w/o Tax | \$ w/6% Tax |
| NMOGLD | | | | | |
| Intangible Expense - Provider - Services | | Hours | Rate | \$ w/o Tax | \$ w/6% Tax |
| Location Cost: | | | | | |
| Move In/Out: | | | | | |
| Rig Cost: (Rig only, charge pump if no cement plugs) | | | \$154 /hr | | |
| (Rig Package, no \$ for pump, include RU/RD time) | | 9 | \$170 /hr | 1530.00 | 1621.80 |
| Supervisor - | | | \$340 /day | | 360.40 |
| Pump Truck (first day \$220, then \$120 each day) | | | | 220.00 | 233.20 |
| Stripping Rubbers - (1.25", 1.5", 2", 2.875", 3.5") (\$70) | | | | 70.00 | 74.20 |
| Drilling Fluid: Air Package | | | | | |
| Stimulation Fluids (Water, KC) | | | | | |
| Unit #155 | | 6 | \$44 /hr | 264.00 | 279.84 |
| Bits | | | | | |
| Cement: Pump Charge \$300/plug | | | | | |
| Cement - six x \$9.40/sx | | | | | |
| Rentals: (DC's, bit sub, etc) | | | | | |
| Fishing Tool Rentals: | | | 15/day | 15.00 | 15.90 |
| Other Rentals: Water Tank | | | \$23/day | 23.00 | 24.38 |
| Flow Back Tank | | | \$44/day | 44.00 | 46.64 |
| Transportation: A-Plus #124 - \$45/hr, Helper - \$17/hr | | | | | |
| A-Plus #141 & #151 | | 6 | \$64 /hr | 384.00 | 407.04 |
| Others Trucking: | | | | | |
| Logging Services: (CR or CIBP) Size - Set @ | | | | | |
| Perforating: BI-Wire \$440, HSC \$490 | | | | | |
| Other: (depth \$0.11/ft) | | | | | |
| Production Testing: | | | | | |
| Swabbing, Snubbing, Coiled Tubing: (nitrogen costs) | | | | | |
| Stimulation: (frac, acid) | | | | | |
| Technical Services: (gas & water tests) | | | | | |
| Roustabout Labor | | | | | |
| Packer Rental: (Fullbore- 2-7/8" - \$530, 4-1/2" + Size - \$860) | | | | | |
| RBP, tbg set or wireline \$850 | | | | | |
| Casing Scraper \$250 | | | | | |
| Disposal: | | | | | |
| OTHER: | | | | | |
| Direct Labor | | | | | |
| Overhead: | | | | | |
| Tangible Expense - Provider - Item | | | | | |
| Casing: | | | | | |
| Tubing: Size Length EUE IJ NU | | | | | |
| Csg & Tbg Equipment: | | | | | |
| Wellhead Equipment: | | | | | |
| | | | | Total Cost \$ | 3314.55 |
| Prior Cum \$ | | | | | |
| | | | | New Cum. \$ | |

NEW MEXICO OIL CONSERVATION COMMISSION
1000 Rio Brazos Road
Aztec, New Mexico

BRADENHEAD TEST REPORT
 (Submit 3 copies to above address)

Date of Test 6-17-98 Operator CHATEAU OIL AND GAS, INC.
 Lease Name Trlba1 Well No. 02 Location U F Sec 06 Twp 26N Rge03W
 Pressure (Shut-in or Flowing) Dwt. 40 Tubing 40 Casing 90 Bradenhead 70
 OPEN BRADENHEAD TO ATMOSPHERE FOR 15 MINUTES

Casing or Tubing Pressure, Dwt.

Bradenhead Flowed:

5 Min _____

Steady Flow

10 Min _____

Surges _____

15 Min _____

Down to Nothing _____

20 Min _____

Nothing _____

25 Min _____

Gas

30 Min _____

Gas & Water _____

Water _____

If Bradenhead flowed water check description below:

Remarks: _____

Clear _____

Fresh _____

Salty _____

Sulfur _____

Black _____

By [Signature]

Position Inspector

Witness _____

| Code | Well Name | Day: | Work Date: | Hours | Rate | \$ w/o Tax | \$ w/6% Tax |
|------|---|-------------------|------------|-------|------------|---------------|-------------|
| | TABLE MESH SA | 2 | 3-10-99 | | | | |
| | Company NMOED | | | | | | |
| | Intangible Expense - Provider - Services | | | | | | |
| 3 | Location Cost: | | | | | | |
| 5 | Move In/Out: | | | | | | |
| 7 | Rig Cost: (Rig only, charge pump if no cement plugs) | | | | \$154 /hr | 2125.00 | 2252.50 |
| | (Drig Package, no \$ for pump, include RU/RD time) | 12 1/2 | | | \$170 /hr | | |
| | Supervisor - | | | | \$340 /day | 340.00 | 360.40 |
| | Pump Truck (first day \$220, then \$120 each day) | | | | | 120.00 | 127.20 |
| | Stripping Rubbers - (1.25", 1.5", 2", 2.875", 3.5" - \$70) | | | | | | |
| 0 | Drilling Fluid: Air Package | | | | | | |
| 8 | Stimulation Fluids (Water, KCl) | | | | | | |
| | Unit #155 | | | | \$44 /hr | | |
| 7 | Bits 4 3/4 | | | | | | |
| 8 | Cement: Pump Charge \$300/plug | | | | | | |
| | Cement - sxs x \$9.40/sx | | | | | | |
| 5 | Rentals: (DC's, bit sub, etc) | | | | | | |
| 6 | Fishing Tool Rentals: | flow | | | 15/day | 15.00 | 15.90 |
| 8 | Other Rentals: Water Tank | | | | \$23 /day | 23.00 | 24.38 |
| | Flow Back Tank | | | | \$44 /day | 44.00 | 46.64 |
| 3 | Transportation: A-Plus #124 - \$45/hr, Helper - \$17/hr | 3 | | | 45.00 | 138.00 | 146.28 |
| | A-Plus #141 or #151 | | | | \$84 /hr | | |
| | Others Trucking: | | | | | | |
| | A-Plus #124 | 6000' | | | 11 1/2 | 66.66 | 70.66 |
| 8 | Logging Services: (CR or CIBP) Size - Set @ | | | | | | |
| | Perforating: BI-Wire \$440, HSC \$490 | | | | | | |
| | Other: (depth \$0.11/ft) | | | | | | |
| 3 | Production Testing: | | | | | | |
| 7 | Swabbing, Snubbing, Coiled Tubing: (nitrogen costs) | | | | | | |
| 7 | Stimulation: (frac, acid) | | | | | | |
| 1 | Technical Services: (gas & water tests) | | | | | | |
| 5 | Roustabout Labor | | | | | | |
| 3 | Packer Rental: (Fullbore - 2-7/8" - \$530, 4-1/2" + Size - \$860) | | | | | | |
| | RBP, tbg set or wireline \$850 | 1 - 11" | | | each | 37.00 | 39.22 |
| | Casing Scraper \$250 | 1 - 13 3/4" | | | each | 45.00 | 47.70 |
| | Disposal: | 4 3/4 bit sub | | | 9.60/day | 9.60 | 10.17 |
| | | 3 1/2 x 2 7/8 x 0 | | | 9.60/day | 9.60 | 10.17 |
| | OTHER: | 2 7/8 x 2 7/8 x 0 | | | 8.00/day | 8.00 | 8.48 |
| | | 2 D.C 3 1/8 | | | 15.20/day | 107.40 | 108.54 |
| | Direct Labor | 1 1/2 hr flange | | | 18.00/day | 18.00 | 19.33 |
| | Overhead: | Adapted | | | 16.00/day | 16.00 | 16.96 |
| ode | Tangible Expense - Provider - Item | | | | | | |
| | Casing: | | | | | | |
| | Tubing: Size Length EUE IJ NU | | | | | | |
| | Csg & Tbg Equipment: | | | | | | |
| | Wellhead Equipment: | | | | | | |
| | | | | | | Total Cost \$ | 3294.53 |
| | Prior Cum \$ | 3314.55 | | | | New Cum. \$ | 6609.08 |

State of New Mexico
 Energy, Minerals & Natural Resources Department
 OIL CONSERVATION DIVISION
 2040 South Pacheco
 Santa Fe, NM 87505

District I
 PO Box 1980, Hobbs, NM 88241-1980
 District II
 811 South First, Artesia, NM 88210
 District III
 1000 Rio Brazos Rd., Aztec, NM 87410
 District IV
 7040 South Pacheco, Santa Fe, NM 87505

Form C-10
 Revised October 18, 1995
 Instructions on back
 Submit to Appropriate District Office
 State Lease - 4 Copies
 Fee Lease - 3 Copies

AMENDED REPORT

WELL LOCATION AND ACREAGE DEDICATION PLAT

| | | |
|---------------------------------------|--|--|
| ¹ API Number 3004511630 | ² Pool Code 79680 | ³ Pool Name Kutz Pictured Cliffs, West (Gas) |
| ⁴ Property Code 000570 | ⁵ Property Name Gallegos Canyon Unit | |
| ⁷ GRID No. 000778 | ⁸ Operator Name Amoco Production Company | |
| ⁹ Well Number 232 | | |
| ⁹ Elevation | | |

| | | | | | | | |
|--------------------|---------------|-----------------|--------------|---------|--|---|--------------------|
| UT or lot no. M | Section 26 | Township 28N | Range 12W | Lot/Idn | Feet from the North/South Line 1190' | Feet from the East/West Line 990' | County San Juan |
|--------------------|---------------|-----------------|--------------|---------|--|---|--------------------|

| | | | | | | | |
|--|---------|----------|-------|---------|-----------------------------------|---------------------------------|--------|
| UT or lot no. | Section | Township | Range | Lot/Idn | Feet from the North/South Line | Feet from the East/West Line | County |
| ¹¹ Bottom Hole Location If Different From Surface ¹² Dedicated Acres 160.00 ¹³ Joint or Infill ¹⁴ Consolidation Code ¹⁵ Order Number | | | | | | | |

NO ALLOWABLE WILL BE ASSIGNED TO THIS COMPLETION UNTIL ALL INTERESTS HAVE BEEN CONSOLIDATED OR A NON-STANDARD UNIT HAS BEEN APPROVED BY THE DIVISION

| | | | | | | | | | |
|---|--|--|--|--|--|------------------------------------|--|------|--|
| ¹⁷ OPERATOR CERTIFICATION I hereby certify that the information contained herein is true and complete to the best of my knowledge and belief. | | Signature Gail M. Jefferson | | Printed Name Sr. Admin. Staff Asst. | | Title 11/2/98 | | Date | |
| ¹⁸ SURVEYOR CERTIFICATION I hereby certify that the well location shown on this plat was plotted from field notes of actual surveys made by me or under my supervision, and that the same is true and correct to the best of my belief. | | Signature and Seal of Professional Surveyor: James P. Leese | | Certificate Number 1463 | | Date of Survey February 2, 1966 | | 990' | |

| Well Name | | Day: | Work Date: | | |
|-----------------------|--|-------|------------|---------------|-------------|
| TABLE Mesa 8A | | 3 | 3-11-99 | | |
| Company | | Hours | Rate | \$ w/o Tax | \$ w/6% Tax |
| NIMOLID | | | | | |
| Code | Intangible Expense - Provider - Services | Hours | Rate | \$ w/o Tax | \$ w/6% Tax |
| 03 | Location Cost: | | | | |
| 05 | Move In/Out: | | | | |
| 07 | Rig Cost: (Rig only, charge pump if no cement plugs) (Drig Package, no \$ for pump, include RUI/RD time) | 9 1/2 | \$154 /hr | 1463.00 | 1550.78 |
| | Supervisor - | | \$340 /day | | |
| | Pump Truck (first day \$220, then \$120 each day) | | | | |
| | Stripping Rubbers - (1.25", 1.5", 2", 2.875", 3.5" - \$70) | | | | |
| 0 | Drilling Fluid: Air Package | | | | |
| 6 | Stimulation Fluids (Water, KCl) | | | | |
| | Unit #155 | | \$44 /hr | | |
| 7 | Bits <i>1-5gal Thread down</i> | | | | 90.21 |
| 8 | Cement: Pump Charge \$300/plug Cement - 436 sacs x \$9.40/sx | | | | |
| 5 | Rentals: (DC's, bit sub, etc) <i>2-800LBS calcium</i> | | | 4098.40 | 4344.31 |
| 6 | Fishing Tool Rentals: | | | | |
| 8 | Other Rentals: Water Tank | | \$23 /day | 23.00 | 24.38 |
| | Flow Back Tank | | \$44 /day | 44.00 | 46.64 |
| 9 | Transportation: A-Plus #124 - \$45/hr, Helper - \$17/hr haul tbgs out A-Plus #141 or #151 <i>haul tbgs in</i> | 1 1/2 | 45.00 | 45.00 | 47.70 |
| | Others Trucking: | 1 1/2 | \$64 /hr | 64.00 | 67.84 |
| | <i>hauling in 2-800 lbs pipe 124</i> | 2 | 45.00 | 90.00 | 95.40 |
| | Logging Services: (CR or CIBP) Size - Set @ | | | | |
| | Perforating: Bi-Wire \$440, HSC \$480 | | | | |
| | Other: (depth \$0.11/R) | | | | |
| | Production Testing: | | | | |
| | Swabbing, Snubbing, Coiled Tubing: (nitrogen costs) | | | | |
| | Stimulation: (frac, acid) | | | | |
| | Technical Services: (gas & water tests) | | | | |
| | Roustabout Labor | | | | |
| | Packer Rental: (Fullbore- 2-7/8"-\$530, 4-1/2" + Size -\$860) | | | | |
| | RBP, tbgs set or wireline \$850 | | | | |
| | Casing Scraper \$250 | | | | |
| | Disposal: <i>1- 13 3/4 adaptor</i> | | \$8.50 | 8.50 | 9.33 |
| | OTHER: <i>1- 13 3/4 companion adaptor</i> | | 16.00 | 16.00 | 16.96 |
| | Direct Labor <i>143 days 4000</i> | | 2.25 | 90.00 | 95.40 |
| | Overhead: <i>121 days 80</i> | | 2.25 | 180.00 | 190.80 |
| 1e | Tangible Expense - Provider - Item | | | | |
| | Casing: | | | | |
| | Tubing: Size Length EUE U NU | | | | |
| | Csg & Tbg Equipment: | | | | |
| | Wellhead Equipment: | | | | |
| | | | | Total Cost \$ | 6579.64 |
| Prior Cum \$ 66 09.08 | | | | | |
| | | | | New Cum. \$ | 131 88.74 |

UNITED STATES
DEPARTMENT OF THE INTERIOR
BUREAU OF LAND MANAGEMENT

FORM APPROVED
Budget Bureau No. 1004-0135
Expires: March 31, 1993

SUNDRY NOTICES AND REPORTS ON WELLS

Do not use this form for proposals to drill or to deepen or reentry to a different reservoir.
Use "APPLICATION FOR PERMIT—" for such proposals

SUBMIT IN TRIPLICATE

1. Type of Well

Oil Well Gas Well Other

2. Name of Operator

RIO CHAMA PETROLEUM INC.

3. Address and Telephone No.

P O Box 23553, Santa Fe, NM 87502 (505) 986-9723

4. Location of Well (Footage, Sec., T., R., M., or Survey Description)

Unit Letter L, 1850 FSL & 790 FWL
Sec. 11, T23N-R2W

5. Lease Designation and Serial No.

CA-156

6. If Indian, Allottee or Tribe Name

Jicarilla Apache

7. If Unit or CA, Agreement Designation

N/A

8. Well Name and No.

Jicarilla D 156 3

9. API Well No.

30-039-05093

10. Field and Pool, or Exploratory Area

Blanco Pictured Cliffs

11. County or Parish, State

Rio Arriba Co., NM

12. CHECK APPROPRIATE BOX(s) TO INDICATE NATURE OF NOTICE, REPORT, OR OTHER DATA

| TYPE OF SUBMISSION | TYPE OF ACTION | |
|---|---|--|
| <input type="checkbox"/> Notice of Intent | <input type="checkbox"/> Abandonment | <input type="checkbox"/> Change of Plans |
| <input type="checkbox"/> Subsequent Report | <input type="checkbox"/> Recompletion | <input type="checkbox"/> New Construction |
| <input type="checkbox"/> Final Abandonment Notice | <input type="checkbox"/> Plugging Back | <input type="checkbox"/> Non-Routine Fracturing |
| | <input type="checkbox"/> Casing Repair | <input type="checkbox"/> Water Shut-Off |
| | <input type="checkbox"/> Altering Casing | <input type="checkbox"/> Conversion to Injection |
| | <input checked="" type="checkbox"/> Other <u>CHANGE OF OPERATOR</u> | <input type="checkbox"/> Dispose Water |

(Note: Report results of multiple completion on Well Completion or Recompletion Report and Log form.)

13. Describe Proposed or Completed Operations (Clearly state all pertinent details, and give pertinent dates, including estimated date of starting any proposed work. If well is directionally drilled, give subsurface locations and measured and true vertical depths for all markers and zones pertinent to this work.)*

CHANGE OF OWNERSHIP AND OPERATOR FROM EOG (NEW MEXICO) INC. TO
RIO CHAMA PETROLEUM INC. EFFECTIVE OCTOBER 1, 1996

14. I hereby certify that the foregoing is true and correct

Signed

J. Craig Creel

Title

J. Craig Creel
PRESIDENT

Date

DEC 10 1996

(This space for Federal or State Office use)

Approved by

Conditions of approval, if any:

Title

ACCEPTED FOR RECORD

Date

Title 18 U.S.C. Section 1001, makes it a crime for any person knowingly and willfully to make to any department or agency of the United States any false, fictitious or fraudulent statements or representations as to any matter within its jurisdiction.

*See instruction on Reverse Side

| Well Name | | Day: | Work Date: | | |
|------------------------------------|--|------------------|------------|---------------|-------------|
| TABLE MORN 8 A | | | 3-15-98 | | |
| Company | | Hours | Rate | \$ w/o Tax | \$ w/6% Tax |
| UMOLD | | | | | |
| Code | Intangible Expense - Provider - Services | Hours | Rate | \$ w/o Tax | \$ w/6% Tax |
| 3 | Location Cost: | | | | |
| 5 | Move In/Out: | | | | |
| 7 | Rig Cost: (Rig only, charge pump if no cement plugs) (Drig Package, no \$ for pump, include RU/RO time) | 6 1/2 | \$154 /hr | 1001.00 | 1061.06 |
| | Supervisor - | | \$170 /hr | | |
| | Pump Truck (first day \$220, then \$120 each day) | | \$340 /day | 340.00 | 360.40 |
| | Stripping Rubbers - (1.25", 1.5", 2", 2.875", 3.5" - \$70) | | | | |
| | Drilling Fluid: Air Package | | | | |
| | Stimulation Fluids (Water, KCl) | | | | |
| | Unit #155 | | \$44 /hr | | |
| | Bits | | | | |
| | Cement: Pump Charge \$300/plug | | | | |
| | Cement - 20 sacs x \$9.40/sac | | | | |
| | Rentals: (DC's, bit sub, etc) | | | | |
| | Fishing Tool Rentals: | | | | |
| | Other Rentals: Water Tank | | \$23 /day | | |
| | Flow Back Tank | | \$44 /day | | |
| | Transportation: A-Plus #124 - \$45/hr, Helper - \$17/hr | | | | |
| | A-Plus #141 or #151 | | \$64 /hr | | |
| | Others Trucking: | | | | |
| | Logging Services: (CR or CIBP) Size - Set @ | | | | |
| | Perforating: BI-Wire \$440, HSC \$480 | | | | |
| | Other: (depth \$0.11/ft) | | | | |
| | Production Testing: | | | | |
| | Swabbing, Snubbing, Coiled Tubing: (nitrogen costs) | | | | |
| | Stimulation: (frac, acid) | | | | |
| | Technical Services: (gas & water tests) | | | | |
| | Roustabout Labor | | | | |
| | Packer Rental: (Fullbore - 2-7/8" - \$530, 4-1/2" + Size - \$860) | | | | |
| | RBP, tbg set or wireline \$850 | | | | |
| | Casing Scraper \$250 | | | | |
| | Disposal: | 2 - 3/8" DC | 1416.00 | 2832.00 | 3001.92 |
| | OTHER: | CDX + sub to PAC | 250.00 | 250.00 | 265.00 |
| | | bit sub | 318.00 | 318.00 | 337.08 |
| | | 1/4" bit | | | |
| | Direct Labor | | | | |
| | Overhead: | | | | |
| Tangible Expense - Provider - Item | | | | | |
| Casing: | | | | | |
| Tubing: Size | Length | EVE IJ NU | | | |
| Csg & Tbg Equipment: | | | | | |
| Wellhead Equipment: | | | | | |
| | | | | Total Cost \$ | 5025.46 |
| Prior Cum \$ 13,188.79 | | | | | |
| | | | | New Cum. \$ | 18214.20 |

DISTRICT I
P.O. Box 1980, Hobbs, N.M. 88241-1980

State of New Mexico
Energy, Minerals & Natural Resources Department

Form C-102
Revised February 21, 1994
Instructions on back
Submit to Appropriate District Office
State Lease - 4 Copies
Fee Lease - 3 Copies

DISTRICT II
P.O. Drawer DD, Artesia, N.M. 88211-0710

OIL CONSERVATION DIVISION

P.O. Box 2088
Santa Fe, NM 87504-2088

DISTRICT III
1000 Elia Brasco Rd., Artec, N.M. 87410

DISTRICT IV
PO Box 2088, Santa Fe, NM 87504-2088

AMENDED REPORT

WELL LOCATION AND ACREAGE DEDICATION PLAT

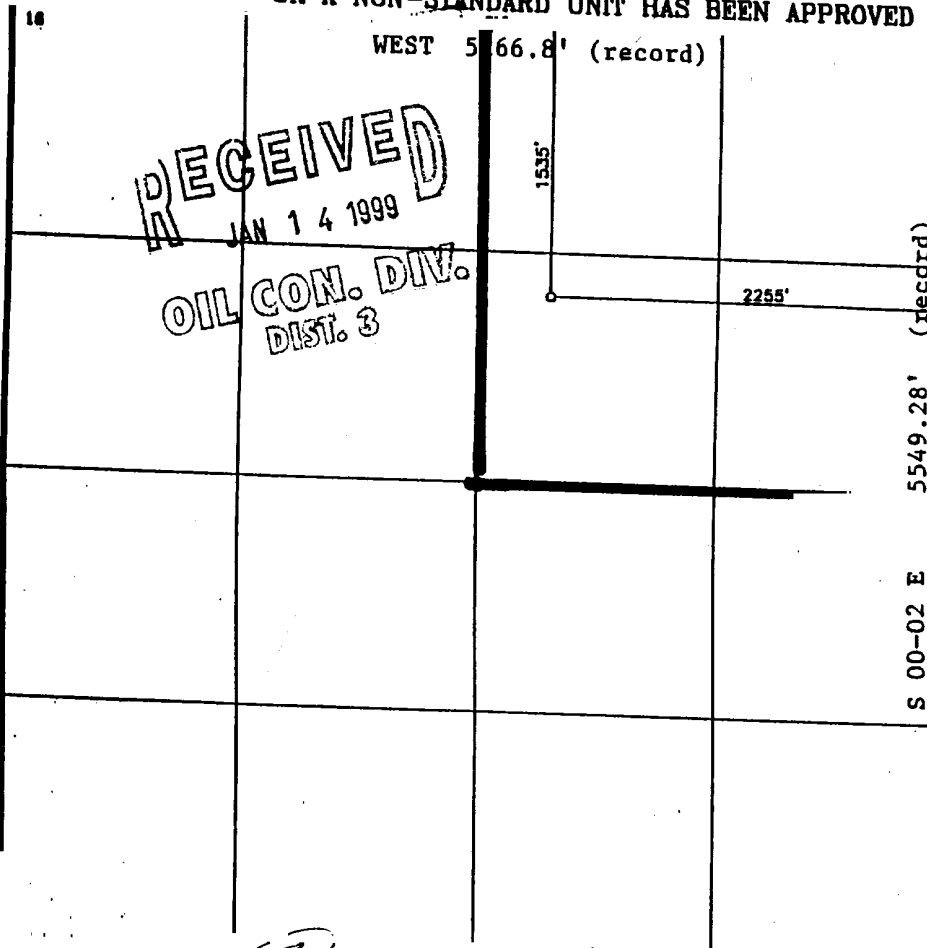
| | | | | | |
|------------------------------|--|-------------------------------------|--|---|----------------------|
| 1 API Number 30-039-25786 | | 2 Pool Code 96822 | | 3 Pool Name Cabresto Canyon; San Jose Ext. | |
| 4 Property Code | | 5 Property Name JICARILLA 459-20 | | | 6 Well Number 7 |
| 7 OGRID No. 013925 | | 8 Operator Name MALLON OIL CO. | | | 9 Elevation 7239' |

| 10 Surface Location | | | | | | | | | |
|---------------------|------------|-------------|----------|------------|------------------|---------------------|------------------|-------------------|------------|
| 11 UL or lot no. | 12 Section | 13 Township | 14 Range | 15 Lot Idn | 16 Feet from the | 17 North/South line | 18 Feet from the | 19 East/West line | 20 County |
| | 20 | 30-N | 3-W | | 1535 | NORTH | 2255 | EAST | RIO ARRIBA |

| 11 Bottom Hole Location If Different From Surface | | | | | | | | | |
|---|------------|-------------|----------|------------|------------------|---------------------|------------------|-------------------|-----------|
| 12 UL or lot no. | 13 Section | 14 Township | 15 Range | 16 Lot Idn | 17 Feet from the | 18 North/South line | 19 Feet from the | 20 East/West line | 21 County |
| | | | | | | | | | |

| | | | |
|---------------------------|--------------------|-----------------------|--------------|
| 22 Dedicated Acres 160 | 23 Joint or Infill | 24 Consolidation Code | 25 Order No. |
|---------------------------|--------------------|-----------------------|--------------|

NO ALLOWABLE WILL BE ASSIGNED TO THIS COMPLETION UNTIL ALL INTERESTS HAVE BEEN CONSOLIDATED OR A NON-STANDARD UNIT HAS BEEN APPROVED BY THE DIVISION



17 OPERATOR CERTIFICATION

I hereby certify that the information contained herein is true and complete to the best of my knowledge and belief.

Signature: Christy Serrano
 Printed Name: Christy Serrano
 Title: Production Secretary
 Date: January 13, 1999

18 SURVEYOR CERTIFICATION

I hereby certify that the well location shown on this plat was plotted from field notes of actual surveys made by me or under my supervision, and that the same is true and correct to the best of my belief.

Date of Survey: 12-1
 Signature and Seal of Professional Surveyor: [Signature]
 Certificate Number: 8894

S 00-02 E 5549.28' (record)

HOLD C104 FOR [Signature]