

UNITED STATES
DEPARTMENT OF THE INTERIOR
GEOLOGICAL SURVEY

APPLICATION FOR PERMIT TO DRILL, DEEPEN, OR PLUG BACK

1a. TYPE OF WORK

DRILL ☒DEEPEN ☐PLUG BACK ☐

b. TYPE OF WELL

OIL
WELL ☐GAS
WELL ☒

OTHER

SINGLE
ZONE ☒MULTIPLE
ZONE ☐

2. NAME OF OPERATOR

Bixco, Inc.

3. ADDRESS OF OPERATOR

P.O. Box 255, Farmington, New Mexico 87401

4. LOCATION OF WELL (Report location clearly and in accordance with any State requirements.)*

At surface

990 ft. from North line, 1650 ft. from west line

At proposed prod. zone

Same

14. DISTANCE IN MILES AND DIRECTION FROM NEAREST TOWN OR POST OFFICE*

10 miles South of Farmington, NM

15. DISTANCE FROM PROPOSED*

LOCATION TO NEAREST
PROPERTY OR LEASE LINE, FT.

990 Ft.

(Also to nearest drlg. unit line, if any)

18. DISTANCE FROM PROPOSED LOCATION*

TO NEAREST WELL, DRILLING, COMPLETED,
OR APPLIED FOR, ON THIS LEASE, FT.

None

16. NO. OF ACRES IN LEASE

480 ac.

19. PROPOSED DEPTH

1535 Ft.

17. NO. OF ACRES ASSIGNED

TO THIS WELL

160 ac.

20. ROTARY OR CABLE TOOLS

Rotary

21. ELEVATIONS (Show whether DF, RT, GR, etc.)

5957 GR

22. APPROX. DATE WORK WILL START*

September 26, 1980

23. PROPOSED CASING AND CEMENTING PROGRAM

SIZE OF HOLE	SIZE OF CASING	WEIGHT PER FOOT	SETTING DEPTH	QUANTITY OF CEMENT
8 3/4"	7"	17.0# H-40	90 ft.	35 sacks - to surface
4 3/4"	2 7/8"	6.5#, N-80	1535 ft.	175 sacks - to surface

It is proposed to set 3 jts of 7", 17# surface casing in an 8 3/4" hole to 90 ft. depth and cement it to the surface with approx. 35 sacks of reg. cement 4% CaCl. After cement sets 12 hrs a 4 3/4" hole will be drilled to a TD of 1535 ft. to test gas possibilities in the Farmington, Fruitland and Pictured Cliffs ss's. No water-bearing formations or abnormal pressures are anticipated. An electrical-induction, a formation density and a compensated neutron-density log with caliper will be run to total depth. If an evaluation of these logs indicates gas possibilities, 2 7/8", 6.5# tubing will be run to total depth and cemented to the surface. After at least 24 hrs, the possible gas zones will be perforated and tested and stimulated, if required. The 4 3/4" hole will be drilled with an 8.6 to 9.0 lb/gal., low water-loss gel mud. A Hydril 7", 3000# test blow-out preventor will be used during drilling and a master valve and stripping head will be utilized during any completion attempt. Estimated formation tops are: Ojo Alamo - Surface, Kirtland Sh - 90 ft., Fruitland Fm - 912 Pictured Cliffs Ss - 1365 ft. - Lewis Sh. - 1535 ft.

IN ABOVE SPACE DESCRIBE PROPOSED PROGRAM: If proposal is to deepen or plug back, give data on present productive zone and proposed new productive zone. If proposal is to drill or deepen directionally, give pertinent data on subsurface locations and measured and true vertical depths. Give blowout preventer program, if any.

24.

SIGNED

William R. Speer

TITLE

Agent

(This space for Federal or State office use)

PERMIT NO.

APPROVAL DATE

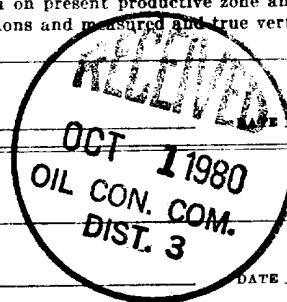
APPROVED BY

CONDITIONS OF APPROVAL, IF ANY:

James W. Hardy
for

TITLE

DATE



Sept. 2, 1980

**NEW MEXICO OIL CONSERVATION COMMISSION
WELL LOCATION AND ACREAGE DEDICATION PLAT**

Form C-102
Supersedes C-128
Effective 1-1-65

All distances must be from the outer boundaries of the Section.

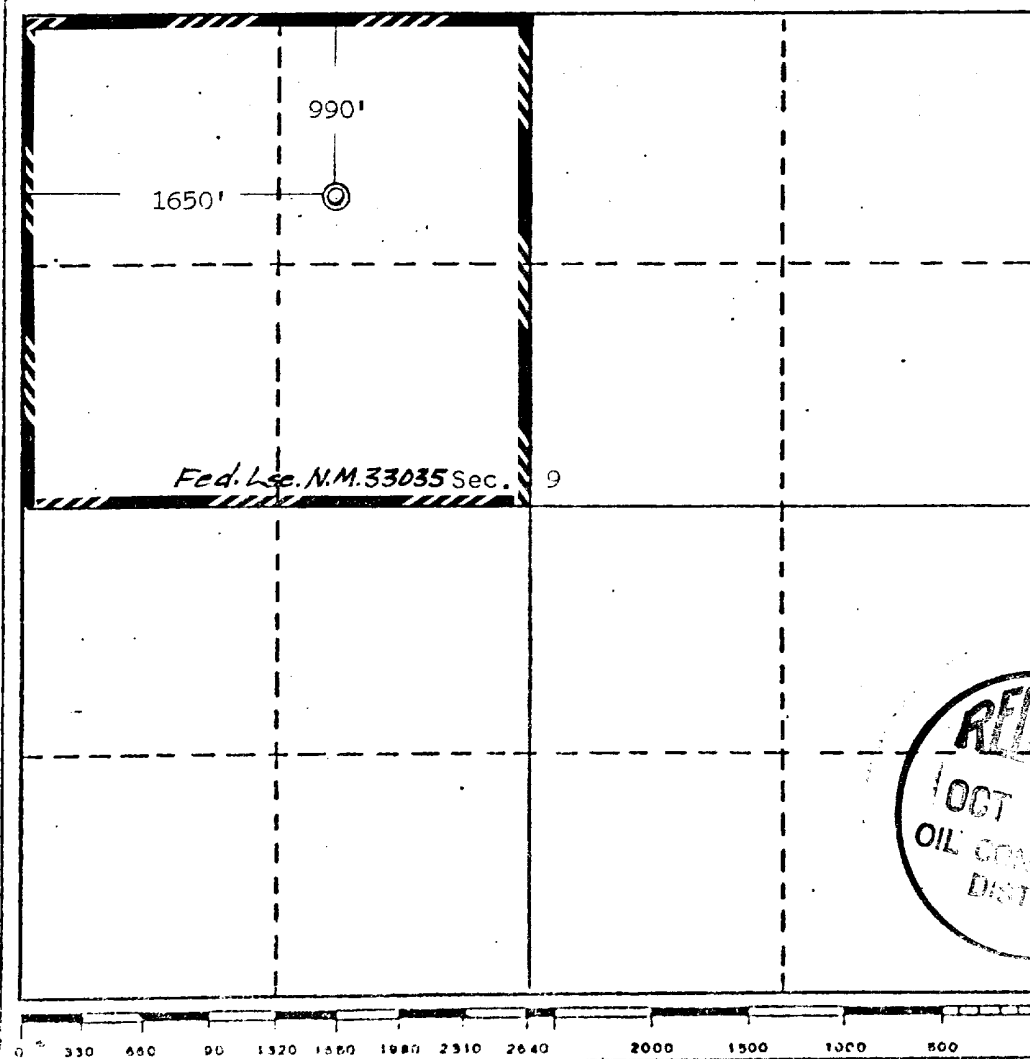
Operator Bixco Incorporated			Lease Campbell		Well No. 1
Unit Letter C	Section 9	Township 27 North	Range 13 West	County San Juan	
Actual Footage Location of Well: <div style="display: flex; justify-content: space-between;"> 990 feet from the North line and 1650 feet from the West line </div>					
Ground Level Elev. 5957	Producing Formation Pictured Cliffs Sb.	Pool Wildcat WAW East	Dedicated Acreage: 160 Acres		

1. Outline the acreage dedicated to the subject well by colored pencil or hatchure marks on the plat below.
2. If more than one lease is dedicated to the well, outline each and identify the ownership thereof (both as to working interest and royalty).
3. If more than one lease of different ownership is dedicated to the well, have the interests of all owners been consolidated by communitization, unitization, force-pooling, etc?

☐ Yes ☐ No If answer is "yes," type of consolidation not applicable

If answer is "no," list the owners and tract descriptions which have actually been consolidated. (Use reverse side of this form if necessary.) _____

No allowable will be assigned to the well until all interests have been consolidated (by communitization, unitization, forced-pooling, or otherwise) or until a non-standard unit, eliminating such interests, has been approved by the Commission.



CERTIFICATION

I hereby certify that the information contained herein is true and complete to the best of my knowledge and belief.

William R. Speer
Name **William R. Speer**
Agent

Position
Bixco, Inc.

Company
August 28, 1980

Date

I hereby certify that the well location shown on this plat was plotted from field notes of actual surveys made by me or under my supervision, and that the same are true and correct to the best of my knowledge and belief.

Date Surveyed
August 26, 1980

Registered Professional Engineer
and/or Land Surveyor

Edgar L. Risenhoover
Certificate No. **5979**

Edgar L. Risenhoover, L.S.

DEVELOPMENT PLAN FOR SURFACE USE

For proposed Bixco, Inc. #1 Campbell well,
located 990 ft. from north line & 1650 ft. from west,
Section 9, Township 27 North, Range 13 West, N.M.P.M.
San Juan County, New Mexico

1. The attached topographic map (scale: 1 inch = 2,000 ft.) indicates the proposed location of the well, as well as the location of existing roads and wells in the immediate vicinity.
2. The proposed location is accessible by existing state highway 371, south of Farmington 4.8 miles from the bridge over the San Juan River, then right onto a new Navajo Irrigation Project paved highway southward 4.8 miles, through a cattle-guard on the east side of the highway onto a dirt road extending eastward. The location is approximately 200 ft. off of this road, some 1700 ft. east of the highway; such that no additional road or location construction is contemplated for the small, drive-in rig which will be used for drilling. The terrain is very flat over the entire area which will be utilized for drilling, as is indicated by the map.
3. The attached well drill-site layout plat indicates that the only construction anticipated is the digging of three mud and reserve pits, approximately 15 ft. X 8 ft. X 6 ft. deep some ten feet from the hole as shown. Two of these pits will be utilized for drilling mud and well-cuttings retention, while the third will be used for a reserve pit for water for cementing and /or fracture stimulation. All pits will be unlined. Upon completion of the well these pits will be used for all waste material and fenced until the remaining mud is sufficiently dehydrated (estimated 4-8 wks.) to be back-filled, tamped and leveled to the surrounding terrain level.
4. No additional wells are presently planned for drilling on this lease. Should the proposed well prove productive, it is anticipated that any production facilities will be installed within a 200 ft. radius of the proposed hole, as dictated by the needs of a future pipeline tie to a gathering system which does not presently extend into the immediate vicinity of the well. It is anticipated that such a tie will be made to either of two existing systems belonging to El Paso Natural Gas Co. which lie approximately 3.0 miles to the south (a 40 psi, low-pressure system) and 1.0 mile to the north (a 200 psi high-pressure system). It is also anticipated that the well-head hook-up, any production equipment and all pipeline connections will be discussed with, be approved by and will conform with the requirements of the Bureau of Indian Affairs and the Navajo Tribe with respect to the Navajo Indian Irrigation Project.
5. Water for the drilling and completion of the proposed well will be obtained from the San Juan River and will be hauled by truck to the location on contract.

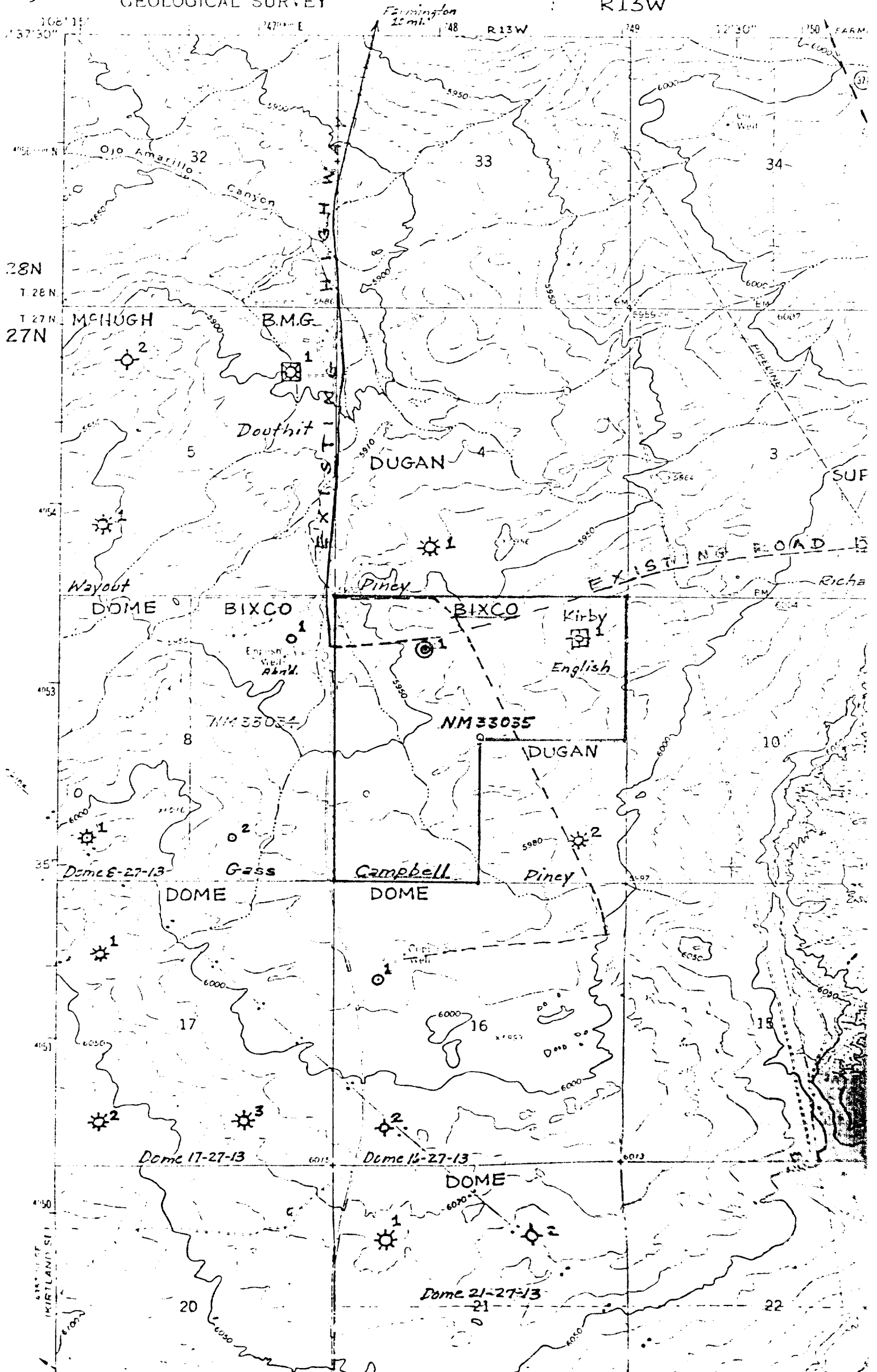
6. No permanent camp or airstrip facilities are proposed.
7. Upon completion of the drilling operation, the location will be thoroughly cleaned up of all debris, the pits filled and tamped, the location leveled to conform with the pre-existing terrain and any disturbed area not utilized for production facilities will be seeded as required.
8. The lessee and operator's representative and agent for the proposed well is William R. Speer, P.O. Box 255, Farmington, NM 87401. His office telephone number is 505-325-7789 and his residential telephone number is 505-325-2520.
9. Certification:

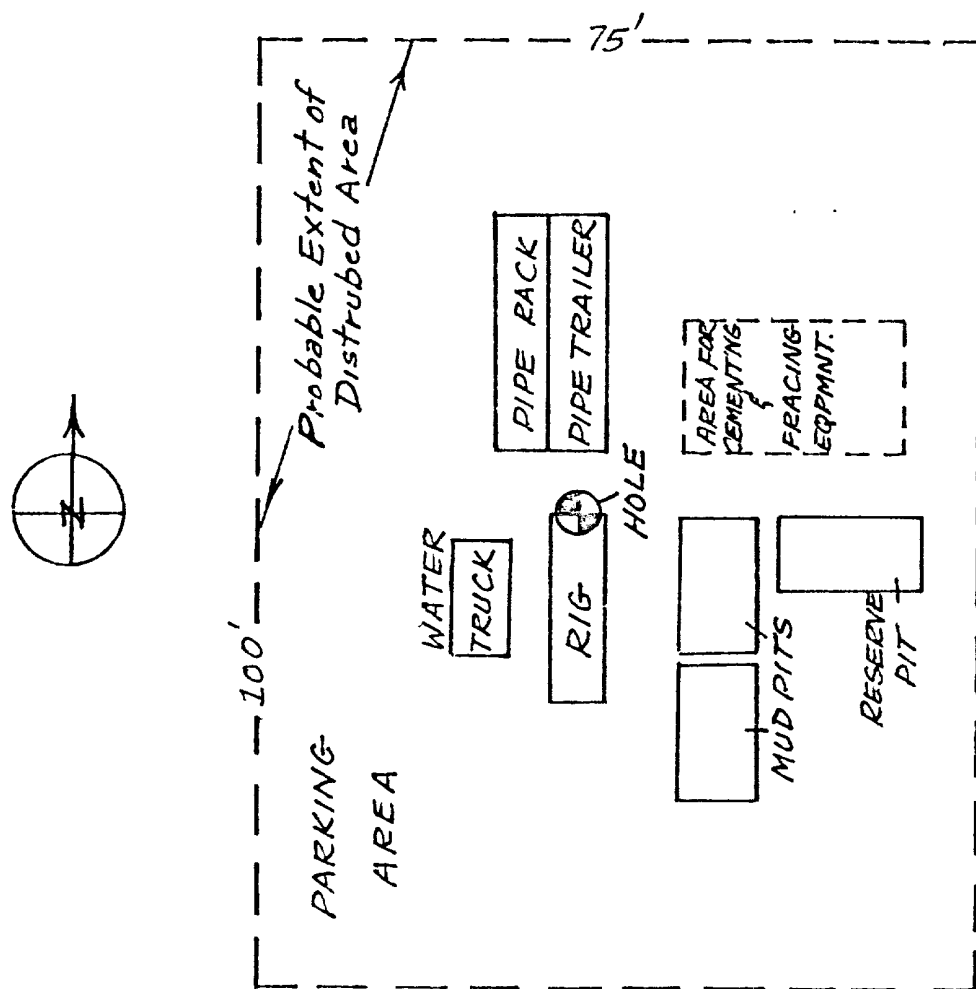
_____ and its contractors and sub-contractors in conformity with this plan and the terms and conditions under which it is approved.

William R. Speer
William R. Speer
Consulting Geologist

UNITED STATES
DEPARTMENT OF THE INTERIOR
GEOLOGICAL SURVEY

R13W



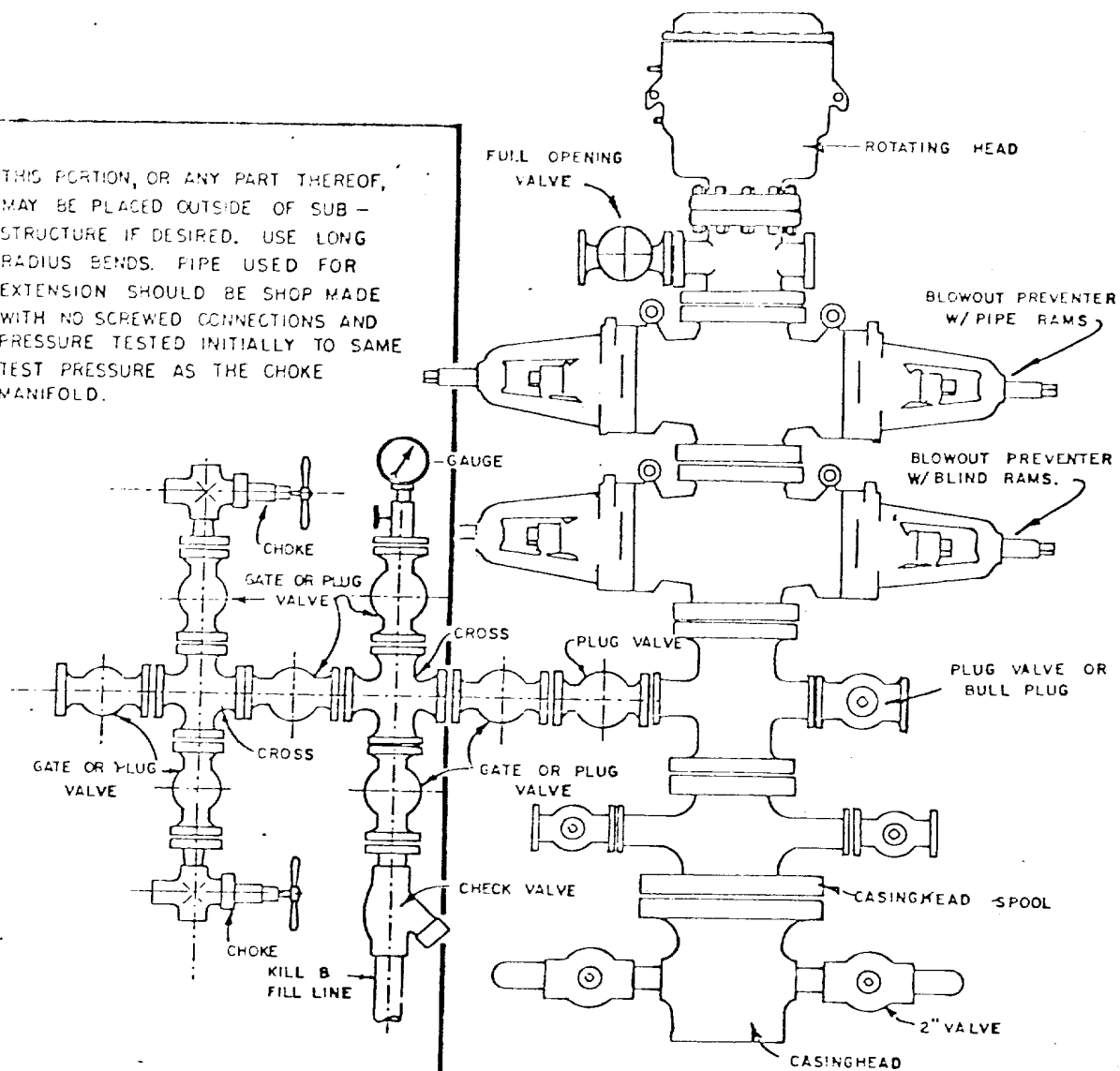


WAW-PICTURED CLIFFS WELL DRILL-SITE LAYOUT PLAT
showing location, size and placement of various units

SCALE: 1 INCH = 20 FEET

For the proposed Bixco, Inc. #1 Campbell-Pictured Cliffs Test
990 ft. fnl and 1650 ft. fw1, Sec. 9, T27N, R13W, San Juan
County, New Mexico.

THIS PORTION, OR ANY PART THEREOF, MAY BE PLACED OUTSIDE OF SUB-STRUCTURE IF DESIRED. USE LONG RADIUS BENDS. PIPE USED FOR EXTENSION SHOULD BE SHOP MADE WITH NO SCREWED CONNECTIONS AND PRESSURE TESTED INITIALLY TO SAME TEST PRESSURE AS THE CHOKE MANIFOLD.



BLOWOUT PREVENTER HOOKUP