

UNITED STATES
DEPARTMENT OF THE INTERIOR
GEOLOGICAL SURVEY

30-045-25168

APPLICATION FOR PERMIT TO DRILL, DEEPEN, OR PLUG BACK

1a. TYPE OF WORK

DRILL ☒DEEPEN ☐PLUG BACK ☐

b. TYPE OF WELL

OIL
WELL ☐GAS
WELL ☒

OTHER

SINGLE
ZONE ☐MULTIPLE
ZONE ☐

2. NAME OF OPERATOR

GULF OIL CORPORATION

3. ADDRESS OF OPERATOR

P. O. Box 670, Hobbs, New Mexico 88240

4. LOCATION OF WELL (Report location clearly and in accordance with any State requirements.)*

At surface

990' FNL & 1520' FWL

At proposed prod. zone

14. DISTANCE IN MILES AND DIRECTION FROM NEAREST TOWN OR POST OFFICE*

12 miles south of Bloomfield, New Mexico

10. DISTANCE FROM PROPOSED*

LOCATION TO NEAREST
PROPERTY OR LEASE LINE, FT.
(Also to nearest drlg. unit line, if any)

16. NO. OF ACRES IN LEASE

160

17. NO. OF ACRES ASSIGNED
TO THIS WELL

160

18. DISTANCE FROM PROPOSED LOCATION*
TO NEAREST WELL, DRILLING, COMPLETED,
OR APPLIED FOR, ON THIS LEASE, FT.

19. PROPOSED DEPTH

2100'

20. ROTARY OR CABLE TOOLS

Rotary

21. ELEVATIONS (Show whether DF, RT, GR, etc.)

6457' GL

22. APPROX. DATE WORK WILL START*

23.

PROPOSED CASING AND CEMENTING PROGRAM

SIZE OF HOLE	SIZE OF CASING	WEIGHT PER FOOT	SETTING DEPTH	QUANTITY OF CEMENT
9-5/8"	7-5/8"	24#	90'	Circulated (approx 100 sx)
6 1/2"	2-7/8"	6.5#	2100'	Circulated (approx 500 sx)

ALL ATTACHED

This action is subject to administrative
approval of the GCR 200.Mud Program: 0' - 90'
90' - 2100'Fresh water spud mud
Fresh water low solid mud with the following
properties: Viscosity 32-37 sec., water loss
20-4 cc, weight 8.5 - 9.0 ppg.

Gas is not dedicated.



IN ABOVE SPACE DESCRIBE PROPOSED PROGRAM: If proposal is to deepen or plug back, give data on present productive zone and proposed new productive zone. If proposal is to drill or deepen directionally, give pertinent data on subsurface locations and measured and true vertical depths. Give blowout preventer program, if any.

24.

SIGNED

R. C. Anderson

TITLE

Area Production Manager

DATE

8-12-81

(This space for Federal or State office use)

PERMIT NO.

APPROVAL DATE

APPROVED BY

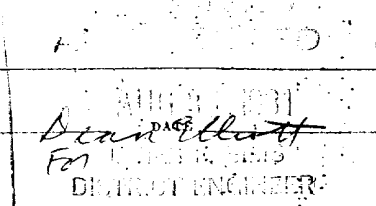
TITLE

CONDITIONS OF APPROVAL, IF ANY:

a 3

NMOC

*See Instructions On Reverse Side



NEW MEXICO OIL CONSERVATION COMMISSION
WELL LOCATION AND ACREAGE DEDICATION PLAT

Form C-167
Supersedes C-128
Effective 1-1-63

All distances must be from the outer boundaries of the Section.

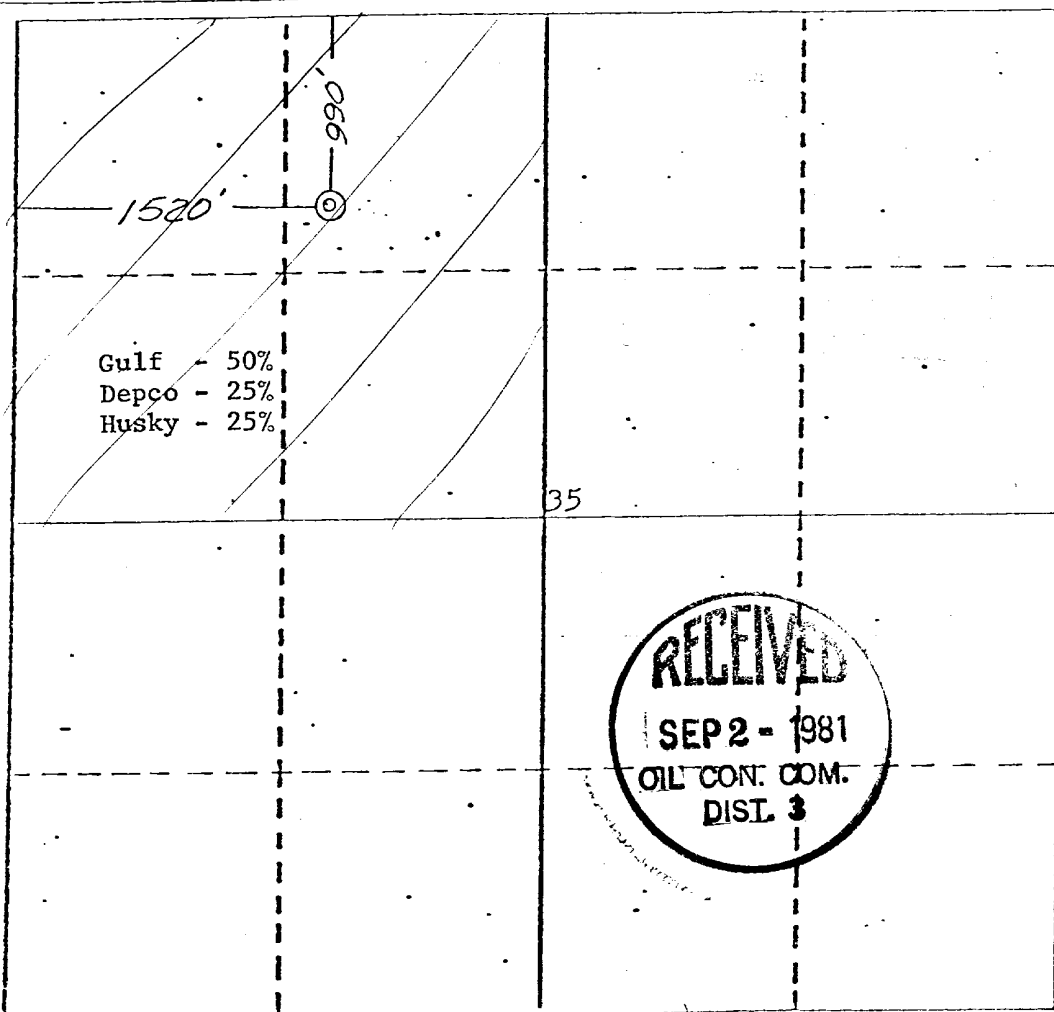
Owner GULF OIL CORPORATION		Lease DOUTHIT A FEDERAL COMM		Well No. #8
Unit Letter C	Section 35	Township 27 NORTH	Range 11 WEST	County SAN JUAN
Actual Footage Location of Well: 990 feet from the NORTH line and 1520 feet from the WEST line				
Ground Level Elev. 6457	Producing Formation West Kutz	Pool West Kutz Pictured Cliffs	Dedicated Acreage: 160 Acres	

1. Outline the acreage dedicated to the subject well by colored pencil or hatchure marks on the plat below.
2. If more than one lease is dedicated to the well, outline each and identify the ownership thereof (both as to working interest and royalty).
3. If more than one lease of different ownership is dedicated to the well, have the interests of all owners been consolidated by communitization, unitization, force-pooling, etc?

☒ Yes ☐ No If answer is "yes," type of consolidation Communitization

If answer is "no," list the owners and tract descriptions which have actually been consolidated. (Use reverse side of this form if necessary.)

No allowable will be assigned to the well until all interests have been consolidated (by communitization, unitization, forced-pooling, or otherwise) or until a non-standard unit, eliminating such interests, has been approved by the Commission.



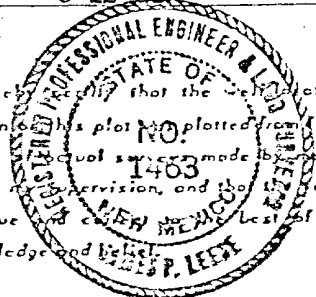
CERTIFICATION

I hereby certify that the information contained herein is true and complete to the best of my knowledge and belief.

R. C. Anderson

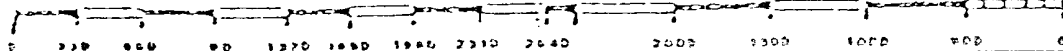
Name
R. C. Anderson
Position
Area Production Manager
Company
Gulf Oil Corporation
Date
8-12-81

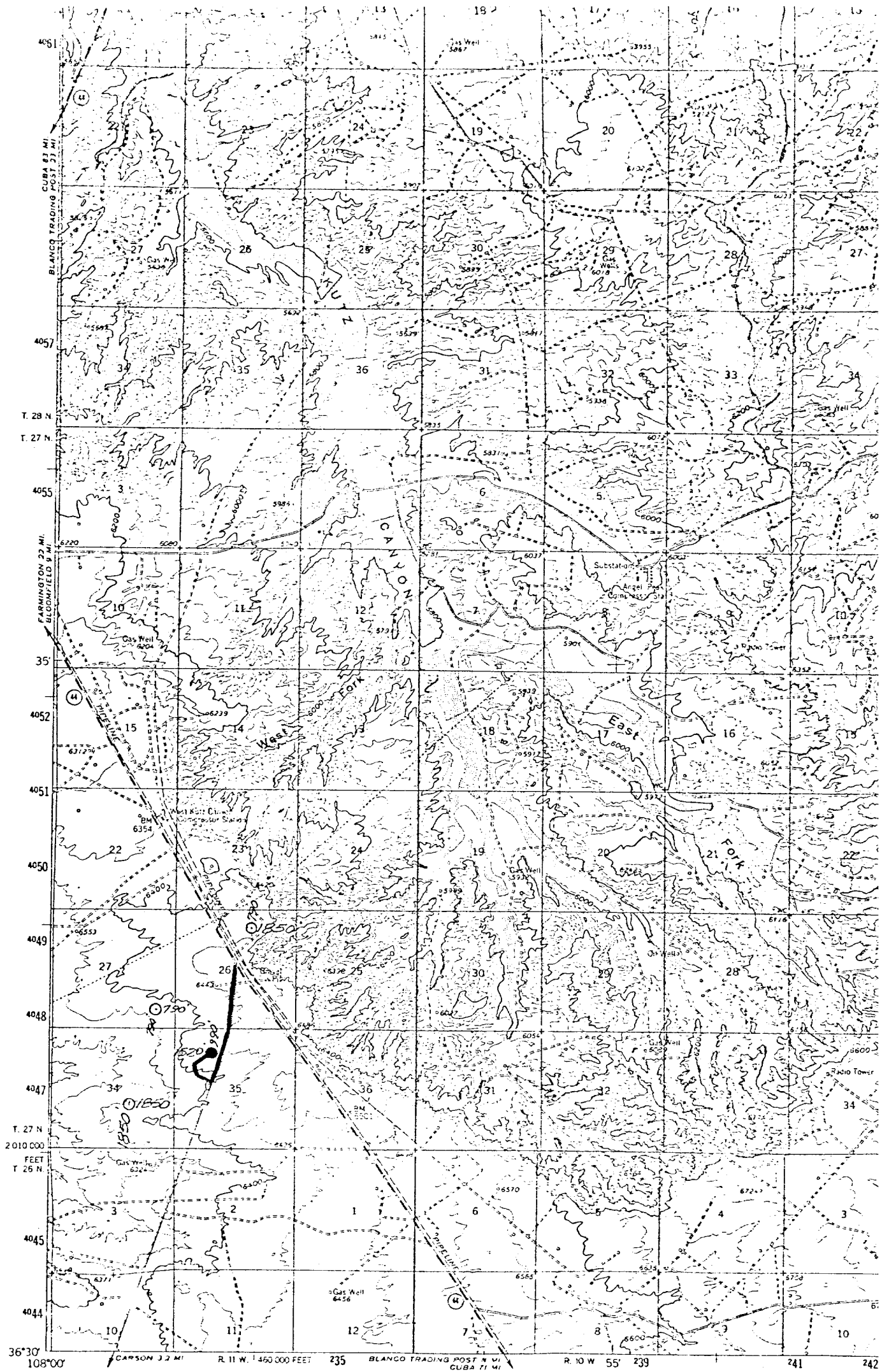
I hereby certify that the well location shown on this plat was plotted from field notes of actual survey made by me or under my supervision, and that the same is true to the best of my knowledge and belief.



Date Surveyed
February 24, 1981
Registered Professional Engineer and Land Surveyor
James P. Leese
James P. Leese

Certificate No.
1463





GULF OIL CORPORATION
 DONALD A Federal Comm "C"
 NW $\frac{1}{4}$ Sec. 35, T27N, R11W, N.M.P.M.
 San Juan County, New Mexico

EXHIBIT "B"

THIS MAP COMPLIES WITH N.
 FOR SALE BY U. S. GEOLOGICAL SURVEY, DEN
 A FOLDER DESCRIBING TOPOGRAPHIC