

UNITED STATES
DEPARTMENT OF THE INTERIOR
BUREAU OF LAND MANAGEMENT

SUBMIT IN TRIPPLICATE*
(Other instructions on
reverse side)

Form approved.
Budget Bureau No. 1004-0136
Expires August 31, 1985

36 040-26050

5. LEASE DESIGNATION AND SERIAL NO.
1-149-IND-8465

6. IF INDIAN, ALLOTTEE OR TRIBE NAME
CHARLES, et al (Navajo)

7. UNIT AGREEMENT NAME
N/A

8. FARM OR LEASE NAME
CHARLES, et al

9. WELL NO.
2E

10. FIELD AND POOL, OR WILDCAT
BASIN DAKOTA FIELD

11. SEC., T., R., M., OR BLK.
AND SURVEY OR AREA
A SEC. 12, T27N, R9W, NMPM

12. COUNTY OR PARISH
SAN JUAN

13. STATE
NM

1. TYPE OF WORK
DRILL ☒ DEEPEN ☐ PLUG BACK ☐

2. TYPE OF WELL
OIL WELL ☐ GAS WELL ☒ OTHER ☐

3. NAME OF OPERATOR
SUPERIOR OIL COMPANY

4. ADDRESS OF OPERATOR
P. O. DRAWER "G", CORTEZ, COLORADO 81321

5. LOCATION OF WELL (Report location clearly and in accordance with any State requirements.)
At surface
800' FNL, 1100' FEL, SEC. 12, T27N, R9W (NENE)
At proposed prod. zone
Same as above

6. DISTANCE IN MILES AND DIRECTION FROM NEAREST TOWN OR POST OFFICE*
13 miles southeast of Blanco, New Mexico

7. DISTANCE FROM PROPOSED*
LOCATION TO NEAREST
PROPERTY OR LEASE LINE, FT.
(Also to nearest drlg. unit line, if any)
800'

8. DISTANCE FROM PROPOSED LOCATION*
TO NEAREST WELL, DRILLING, COMPLETED,
OR APPLIED FOR, ON THIS LEASE, FT.
2806'

9. NO. OF ACRES IN LEASE
640

10. NO. OF ACRES ASSIGNED
TO THIS WELL
160

11. PROPOSED DEPTH
6700'

12. ROTARY OR CABLE TOOLS
Rotary

13. ELEVATIONS (Show whether DF, RT, GR, etc.)
5902' Ungraded ground level

14. APPROX. DATE WORK WILL START*
June 15, 1984

15. PROPOSED CASING AND CEMENTING PROGRAM

SIZE OF HOLE	SIZE OF CASING	WEIGHT PER FOOT	SETTING DEPTH
17-1/2"	13-3/8"	54.5#	40'
12-1/4"	8-5/8"	24#	300'
7-7/8"	5-1/2"	15.5#	6700'

16. QUANTITY OF CEMENT
Redi-mix to surface
250 sx Class 'B' to surface
1st stage: 1200 sx light above
Mesa Verde
2nd stage: 700 sx of 50/50 pozmix
above Ojo Alamo through
DV tool set at top of
Chacra.

IN ABOVE SPACE DESCRIBE PROPOSED PROGRAM: If proposal is to deepen or plug back, give data on present productive zone and proposed new productive zone. If proposal is to drill or deepen directionally, give pertinent data on subsurface locations and measured and true vertical depths. Give blowout preventer program, if any.

24.

SIGNED Gregg A. Tripp TITLE Engineer

(This space for Federal or State office use)

PERMIT NO. 1-149-IND-8465 APPROVAL DATE JUL 30 1984

APPROVED BY 02-OIL COM. DIV. TITLE NMOC

CONDITIONS OF APPROVAL, IF ANY:

*See Instructions On Reverse Side

APPROVED
AS AMENDED
JUL 30 1984
AREA MANAGER
FARMINGTON RESOURCE AREA

Title 18 U.S.C. Section 1001, makes it a crime for any person knowingly and willfully to make to any department or agency of the United States any false, fictitious or fraudulent statements or representations as to any matter within its jurisdiction.

All distances must be from the outer boundaries of the Section.

Operator Superior Oil Company		Lease CHARLES, et al		Well No. 2E
Unit Letter A	Section 12	Township 27 North	Range 9 West	County San Juan
Actual Footage Location of Well: 800 feet from the North line and 1100 feet from the East line				
Ground Level Elev. 5902	Producing Formation		Pool	Dedicated Acreage: 320 Acres

1. Outline the acreage dedicated to the subject well by colored pencil or hatchure marks on the plat below.
2. If more than one lease is dedicated to the well, outline each and identify the ownership thereof (both as to working interest and royalty).
3. If more than one lease of different ownership is dedicated to the well, have the interests of all owners been consolidated by communitization, unitization, force-pooling, etc?

☐ Yes ☐ No If answer is "yes," type of consolidation _____

If answer is "no," list the owners and tract descriptions which have actually been consolidated. (Use reverse side of this form if necessary.) _____

No allowable will be assigned to the well until all interests have been consolidated (by communitization, unitization, forced-pooling, or otherwise) or until a non-standard unit, eliminating such interests, has been approved by the Division.

CERTIFICATION

I hereby certify that the information contained herein is true and complete to the best of my knowledge and belief.

Name _____

Position _____

Company _____

Date _____

I hereby certify that the location shown on this plat was plotted from field notes of actual survey made by me or under my supervision, and that the same is true and correct to the best of my knowledge and belief.

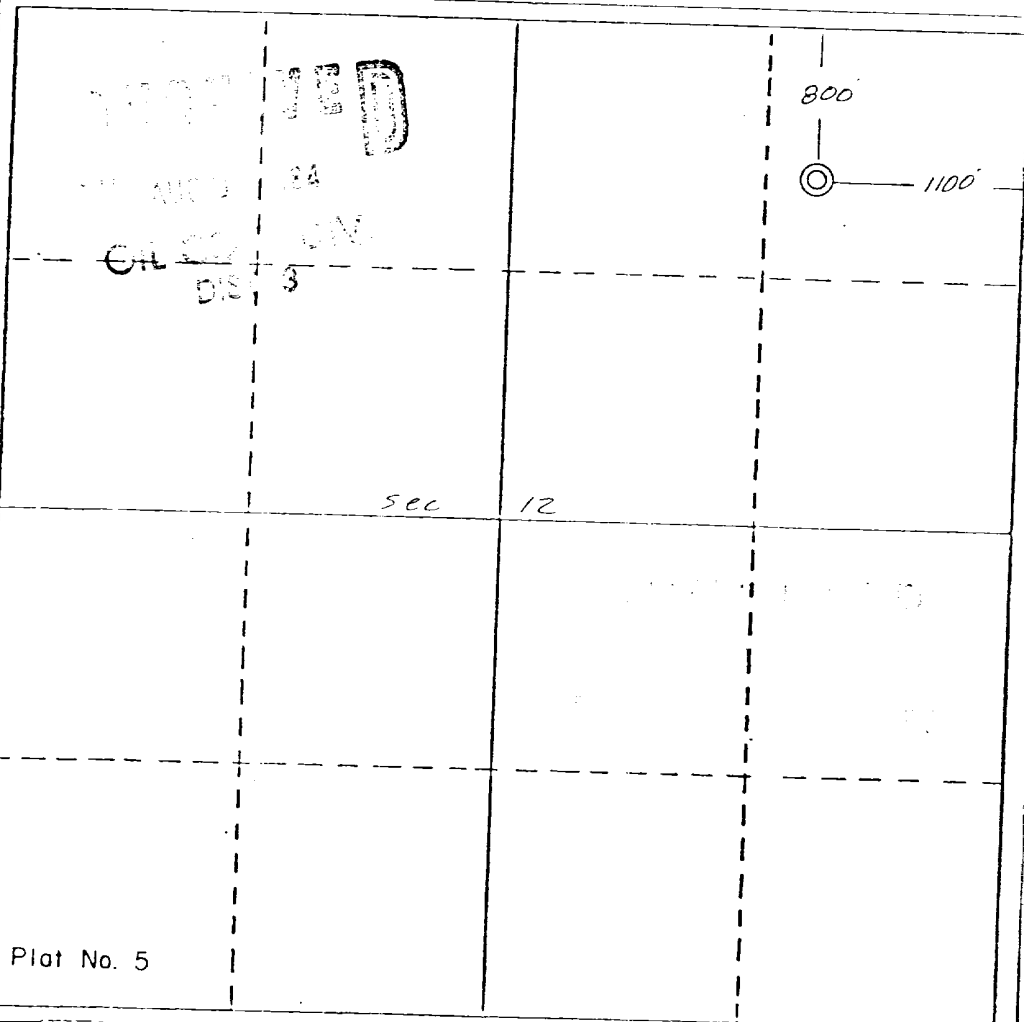
Date Surveyed

April 16, 1984

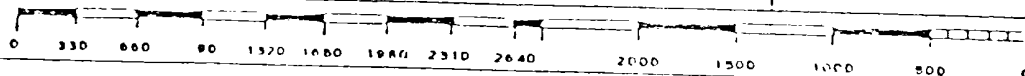
Registered Professional Engineer
and/or Land Surveyor

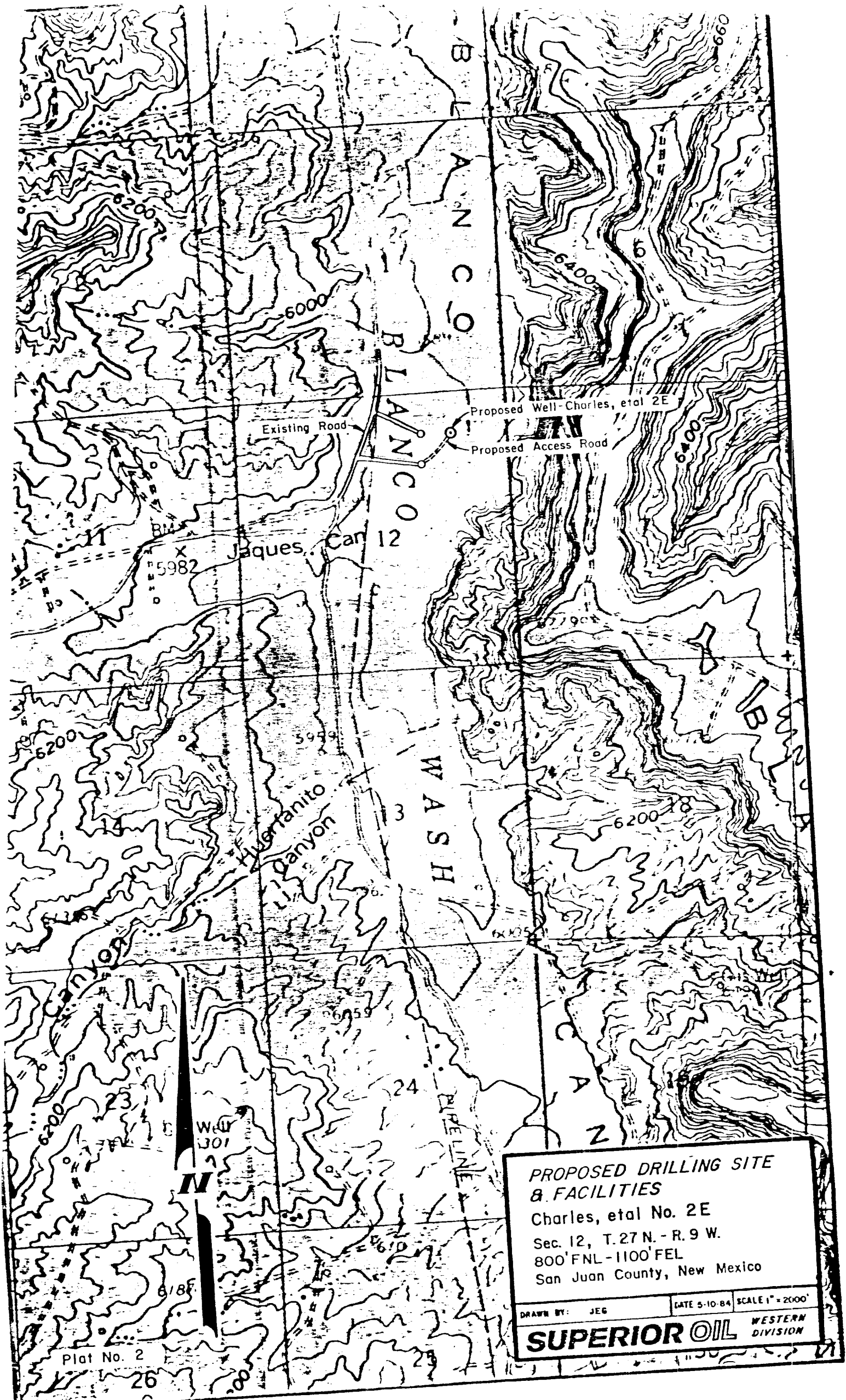
Edgar L. Risenhoover
Certificate No. **5979**

Edgar L. Risenhoover, L.S.



Plat No. 5





**PROPOSED DRILLING SITE
& FACILITIES**

Charles, etal No. 2E

Sec. 12, T.27 N. - R.9 W.

800' FNL - 1100' FEL

San Juan County, New Mexico

DRAWN BY: JEG

DATE 5-10-84

SCALE 1" = 2000'

SUPERIOR OIL

WESTERN
DIVISION