

UNITED STATES
DEPARTMENT OF THE INTERIOR
GEOLOGICAL SURVEY

APPLICATION FOR PERMIT TO DRILL, DEEPEN, OR PLUG BACK

1a. TYPE OF WORK

DRILL ☒DEEPEN ☐PLUG BACK ☐

b. TYPE OF WELL

OIL
WELL ☐GAS
WELL ☒

OTHER

SINGLE
ZONE ☒MULTIPLE
ZONE ☐

2. NAME OF OPERATOR

Marathon Oil Company

3. ADDRESS OF OPERATOR

P. O. Box 552, Midland, TX 79702

4. LOCATION OF WELL (Report location clearly and in accordance with any State requirements.*)

At surface

1877' FSL & 796' FWL

At proposed prod. zone

1877' FSL & 796' FWL

14. DISTANCE IN MILES AND DIRECTION FROM NEAREST TOWN OR POST OFFICE*

8.1 miles south of Bloomfield, NM

15. DISTANCE FROM PROPOSED*

LOCATION TO NEAREST
PROPERTY OR LEASE LINE, FT.
(Also to nearest drig. unit line, if any)

796'

16. NO. OF ACRES IN LEASE

320 240.76

17. NO. OF ACRES ASSIGNED
TO THIS WELL

320

18. DISTANCE FROM PROPOSED LOCATION*

TO NEAREST WELL, DRILLING, COMPLETED,
OR APPLIED FOR, ON THIS LEASE, FT.

None on lease

19. PROPOSED DEPTH

2050'

20. ROTARY OR CABLE TOOLS

Rotary

21. ELEVATIONS (Show whether DF, RT, GR, etc.)

6183' GR

This action is subject to technical and
procedural review pursuant to 43 CFR 3165.3
and appeal pursuant to 43 CFR 3165.3

22. APPROX. DATE WORK WILL START*

April 1, 1990

23.

PROPOSED CASING CEMENTING PROGRAM DRILLING OPERATIONS AUTHORIZED ARE
SUBJECT TO PERMITS WITH ATTACHED
"GENERAL REQUIREMENTS"

SIZE OF HOLE	SIZE OF CASING	WEIGHT PER FOOT	SETTING DEPTH	QUANTITY OF CEMENT
11"	8-5/8"	24#	250'	175 sacks circ to surface
7-7/8"	5-1/2"	15.5#	2050'	315 sacks circ to surface

Propose to drill to TD of \pm 2050'.

All casing will be run and cemented in accordance with regulations and by approved methods.

Blowout prevention equipment will be as outlined in Additional Information.

See attached Multipoint Surface Use Pland and Additional Information for specific drilling operations.

RECEIVED

JUN 11 1990

OIL CON. DIV.
DIST. 3

IN ABOVE SPACE DESCRIBE PROPOSED PROGRAM: If proposal is to deepen or plug back, give data on present productive zone and proposed new productive zone. If proposal is to drill or deepen directionally, give pertinent data on subsurface locations and measured and true vertical depths. Give blowout preventer program, if any.

24.

SIGNED



TITLE Drilling Superintendent

DATE

4/10/90

(This space for Federal or State office use)

PERMIT NO.

APPROVAL DATE

APPROVED

APPROVED BY

TITLE

CONDITIONS OF APPROVAL, IF ANY:

JUN 05 1990

AREA MANAGER

*See Instructions On Reverse Side

0181392

001141

110 140 110

1.000

110 140 110

110 140 110

Submit to Appropriate
District Office
State Lease - 4 copies
Fee Lease - 3 copies

State of New Mexico
Energy, Minerals and Natural Resources Department

Form C-102
Revised 1-1-89

OIL CONSERVATION DIVISION

P.O. Box 2088

Santa Fe, New Mexico 87504-2088

DISTRICT I
P.O. Box 1980, Hobbs, NM 88240

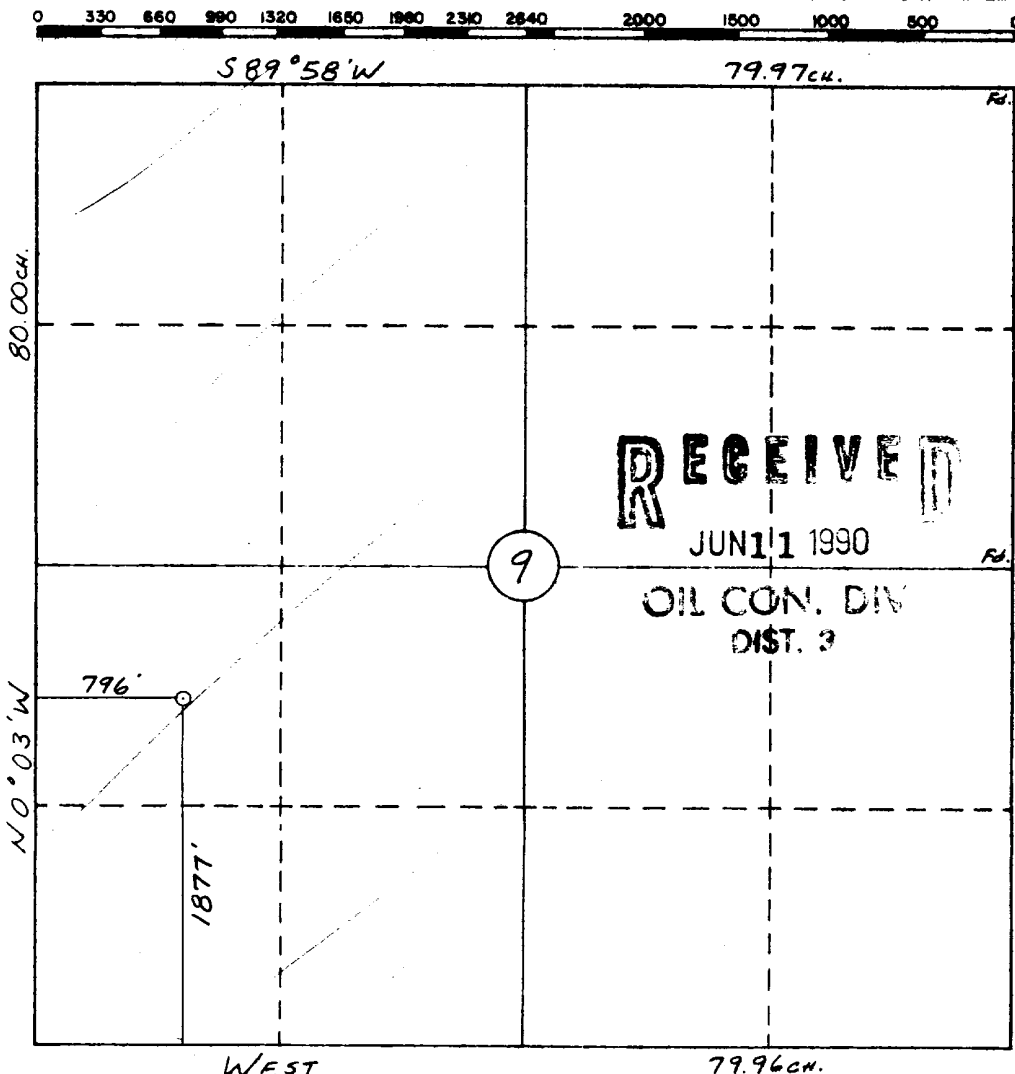
DISTRICT II
P.O. Drawer DD, Artesia, NM 88210

DISTRICT III
1000 Rio Brazos Rd., Aztec, NM 87410

WELL LOCATION AND ACREAGE DEDICATION PLAT

All Distances must be from the outer boundaries of the section

Operator MARATHON OIL COMPANY			Lease BOLACK		Well No. 9-1
Unit Letter L	Section 9	Township 27 N	Range 11 W	County San Juan	
Actual Footage Location of Well: 1877 feet from the South line and 796 feet from the West line					
Ground level Elev. 6183	Producing Formation Fruitland Coal		Pool Basin Fruitland Coal		Dedicated Acreage: 320 Acres
<p>1. Outline the acreage dedicated to the subject well by colored pencil or hatchure marks on the plat below.</p> <p>2. If more than one lease is dedicated to the well, outline each and identify the ownership thereof (both as to working interest and royalty).</p> <p>3. If more than one lease of different ownership is dedicated to the well, have the interest of all owners been consolidated by communitization, unitization, force-pooling, etc.? <input type="checkbox"/> Yes <input type="checkbox"/> No If answer is "yes" type of consolidation _____ If answer is "no" list the owners and tract descriptions which have actually been consolidated. (Use reverse side of this form if necessary.) _____ No allowable will be assigned to the well until all interests have been consolidated (by communitization, unitization, force-pooling, or otherwise) or until a non-standard unit, eliminating such interest, has been approved by the Division.</p>					



OPERATOR CERTIFICATION

I hereby certify that the information contained herein is true and complete to the best of my knowledge and belief.

Signature

Printed Name

S. L. Atnipp

Position

Drilling Superintendent

Company

Marathon Oil Company

Date

4/10/90

SURVEYOR CERTIFICATION

I hereby certify that the well location shown on this plat was plotted from field notes of actual surveys made by me or under my supervision, and that the same is true and correct to the best of my knowledge and belief.

3-8-90

Date Surveyed

William E. Mahnke II

Signature of Registered Professional Surveyor



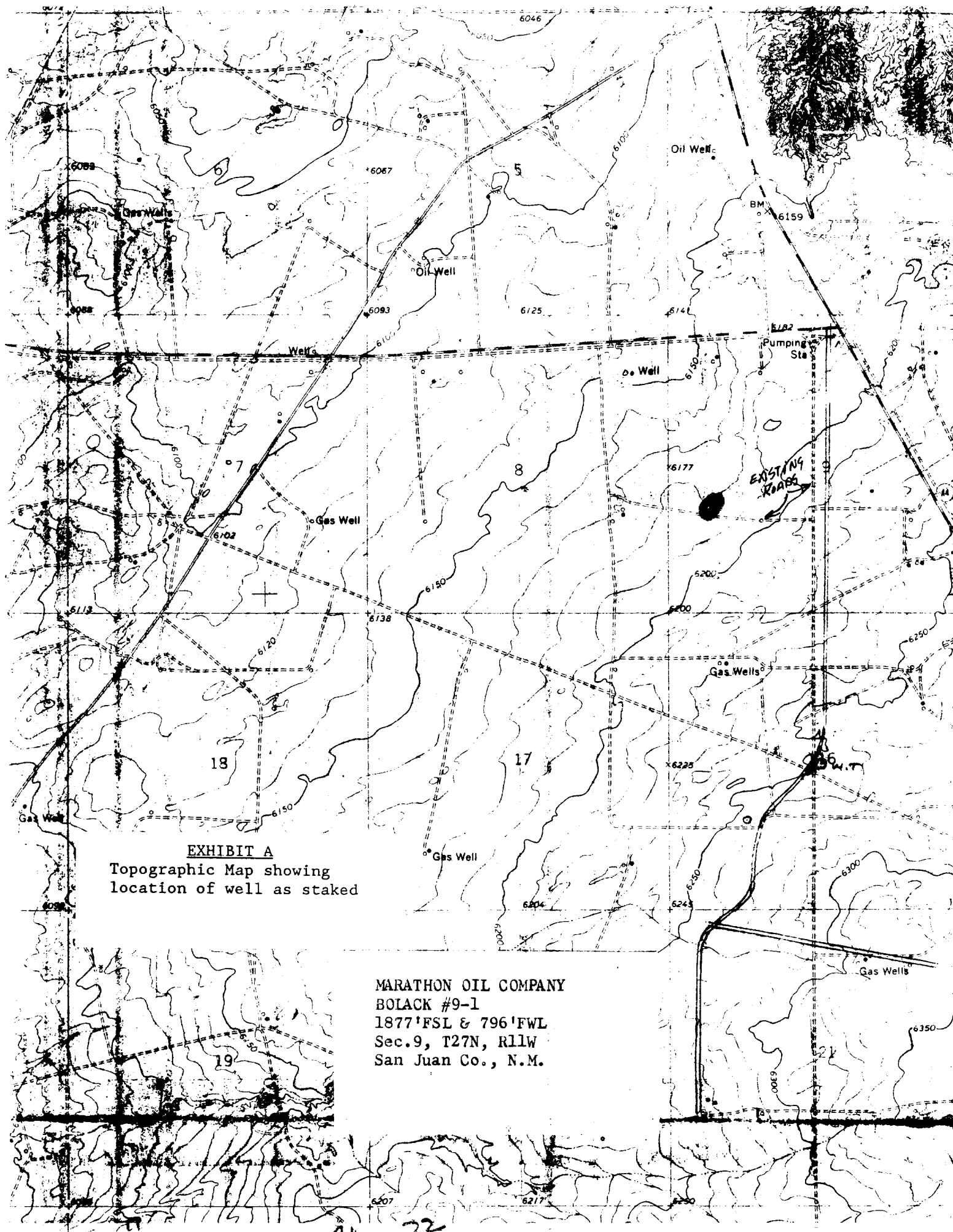


EXHIBIT A
Topographic Map showing
location of well as staked

MARATHON OIL COMPANY
BOLACK #9-1
1877'FSL & 796'FWL
Sec.9, T27N, R11W
San Juan Co., N.M.