

N

30-045-28245

09-07-90

F. Loc. 1080/S; 1355/W Elev. 6121 GL Spd. \_\_\_\_\_ Comp. \_\_\_\_\_ TD \_\_\_\_\_ PB \_\_\_\_\_  
 Cu. ft. \_\_\_\_\_ Cu. ft. \_\_\_\_\_  
 Casing S. \_\_\_\_\_ @ \_\_\_\_\_ W \_\_\_\_\_ Sx. Int. \_\_\_\_\_ @ \_\_\_\_\_ W \_\_\_\_\_ Sx. Pr. \_\_\_\_\_ @ \_\_\_\_\_ W \_\_\_\_\_ Sx. T. \_\_\_\_\_ @ \_\_\_\_\_  
 Csg. Perf. \_\_\_\_\_ Prod. Stim. \_\_\_\_\_

T Gas  
R  
A  
N  
S

BO/D \_\_\_\_\_ Grav. \_\_\_\_\_ 1st Del. Gas \_\_\_\_\_  
 I.P. \_\_\_\_\_ MCF/D After \_\_\_\_\_ Hrs. SICP \_\_\_\_\_ PSI After \_\_\_\_\_ Days GOR \_\_\_\_\_ 1st Del. Oil \_\_\_\_\_

TOPS		NTD	X	Well Log	TEST DATA						
Ojo Alamo		C-103		Plat X	Schd.	PC	Q	PW	PD	D	Ref. No.
Kirtland		C-104		Electric Log							
Fruitland				C-122							
Pictured Cliffs		Ditr		Dfa							
Chacra		Datr		Dac							
Cliff House											
Menefee											
Point Lookout											
Mancos											
Gallup											
Greenhorn											
Dakota											
Entrada											
		Acres S/320									

P  
o  
o  
BasinFrCoalCo. SJ S 10 T 27N R 09W U N Oper. Texaco, Inc. Lse. Nellie Platero No. 8

Nellie Platero #8

N-10-27N-09W

Texaco E &amp; P, Inc.



# United States Department of the Interior



BUREAU OF LAND MANAGEMENT  
Farmington Resource Area  
1235 Laplata Highway  
Farmington, New Mexico 87401

IN REPLY REFER TO:  
SF-078357-A et al. (WC)  
3162.3-1 (019)

OCT. 1 8 1991

Texaco Inc.  
3300 N. Butler  
Farmington, NM 87401

Gentlemen:

Enclosed are your Applications for Permit to Drill well Nos:

- ✓ 1. 4 J. Q. Marshall, sec. 1, T. 27 N., R. 9 W., San Juan County, NM, lease SF-078357-A.
- ✓ 2. 4 H. J. Loe Federal B, sec. 23, T. 29 N., R. 12 W., San Juan County, NM, lease NM-014378.
- ✓ 3. 8 Nellie Platero, sec. 10, T. 27 N., R. 9 W., San Juan County, NM, lease I-149-IND-8464.
- ✓ 4. 10 John Charles, sec. 13, T. 27 N., R. 9 W., San Juan County, NM, lease I-149-IND-8466.
- ✓ 5. 5 Charley Pah, sec. 12, T. 27 N., R. 9 W., San Juan County, NM, lease I-149-IND-8465.
- ✓ 6. 3 Neah Victoria, sec. 1, T. 27 N., R. 9 W., San Juan County, NM, lease I-149-IND-8463.

As discussed with Mark Wakefield of your company on, October 11, 1991, the subject APDs are rescinded and returned due to drilling not being commenced within the approved period of time.

You are required to request surface rehabilitation instructions from this office if construction activities occurred on the referenced drill site. If this office does not receive comment within 30 days, we will presume that no construction occurred and proceed accordingly. Later discovery that construction activities have in fact occurred, may result in assessment of liquidated damages.

Sincerely,

John L. Keller  
Chief, Branch of Mineral Resources

6 Enclosures

cc:  
New Mexico Oil Conservation Division, 1000 Rio Brazos Rd., Aztec, NM 87410  
BIA, Window Rock

## ABANDONED LOCATION

## RECEIVED

OCT 21 1991

OIL CON. DIV  
DIST. 3

UNITED STATES  
DEPARTMENT OF THE INTERIOR

## GEOLOGICAL SURVEY

## APPLICATION FOR PERMIT TO DRILL, DEEPEN, OR PLUG BACK

## 1a. TYPE OF WORK

DRILL ☒DEEPEN ☐PLUG BACK ☐

## b. TYPE OF WELL

OIL  
WELL ☐GAS  
WELL ☒

OTHER

SINGLE  
ZONE ☒MULTIPLE  
ZONE ☐

## 2. NAME OF OPERATOR

Texaco

## 3. ADDRESS OF OPERATOR

3300 North Butler Farmington, NM 87401

## 4. LOCATION OF WELL (Report location clearly and in accordance with any State requirements.)\*

At surface

1055' FSL - 4350' FWL

At proposed prod. zone

1030 1355

## 14. DISTANCE IN MILES AND DIRECTION FROM NEAREST TOWN OR POST OFFICE\*

10 miles SE of Blanco, NM

## 15. DISTANCE FROM PROPOSED\*

LOCATION TO NEAREST  
PROPERTY OR LEASE LINE, FT.  
(Also to nearest drilg. unit line, if any)

1055'

## 16. NO. OF ACRES IN LEASE

640

17. NO. OF ACRES ASSIGNED  
TO THIS WELL

5/320

18. DISTANCE FROM PROPOSED LOCATION\*  
TO NEAREST WELL, DRILLING, COMPLETED,  
OR APPLIED FOR, ON THIS LEASE, FT.

300'

## 19. PROPOSED DEPTH

2186'

## 20. ROTARY OR CABLE TOOLS

Rotary

## 21. ELEVATIONS (Show whether DF, RT, GR, etc.)

6121' GL

This action is subject to technical and

## 22. APPROX. DATE WORK WILL START\*

July 1, 1990

## 23. PROPOSED CASING AND CEMENTING PROGRAM

## DRILLING OPERATIONS AUTHORIZED ARE

## SUBJECT TO COMPLIANCE WITH ATTACHED

## "GENERAL REQUIREMENTS"

348 cuft/circulated to surface

860 cuft/circulated to surface

SIZE OF HOLE	SIZE OF CASING	WEIGHT PER FOOT	SETTING DEPTH
12 1/4"	8 5/8"	24#	300'
7 7/8"	5 1/2"	15.5#	2186'

Propose to spud in the San Jose Formation. Will drill a 12 1/4" surface hole to a TD of 300'. Run and cement surface casing with cement returns to surface. WOC 12 hours. Pressure test to 1500 psi/30 mins. Drill a 7 7/8" hole to a TD of 2186' using fresh water mud. No abnormal pressures or poisonous gases are anticipated. Logs will be run at TD. Run and cement production casing with cement returns to surface. The drilling rig will be released and a completion unit moved in. Cased hole cement bond and correlation logs will be run. The Fruitland coals will be perforated and stimulated using either fresh water base gel or foam system.

Surface ownership is Indian Allotted.

RECEIVED

SEP 07 1990

IN ABOVE SPACE DESCRIBE PROPOSED PROGRAM: If proposal is to deepen or plug back, give data on present productive zone and proposed new productive zone. If proposal is to drill or deepen directionally, give pertinent data on subsurface location, formation and the vertical depths. Give blowout preventer program, if any.

24.

SIGNED

Alan A. Kleier

TITLE Area Manager

DATE

7-1-90

(This space for Federal or State office use)

PERMIT NO.

APPROVAL DATE

APPROVED BY

TITLE

CONDITIONS OF APPROVAL, IF ANY:

\*See Instructions On Reverse Side

Submit to Appropriate  
District Office  
State Lease - 4 copies  
Fee Lease - 3 copies

State of New Mexico  
Energy, Minerals and Natural Resources Department

Form C-102  
Revised 1-1-89

OIL CONSERVATION DIVISION

P.O. Box 2088  
Santa Fe, New Mexico 87504-2088

DISTRICT I  
P.O. Box 1980, Hobbs, NM 88240

DISTRICT II  
P.O. Drawer DD, Artesia, NM 88210

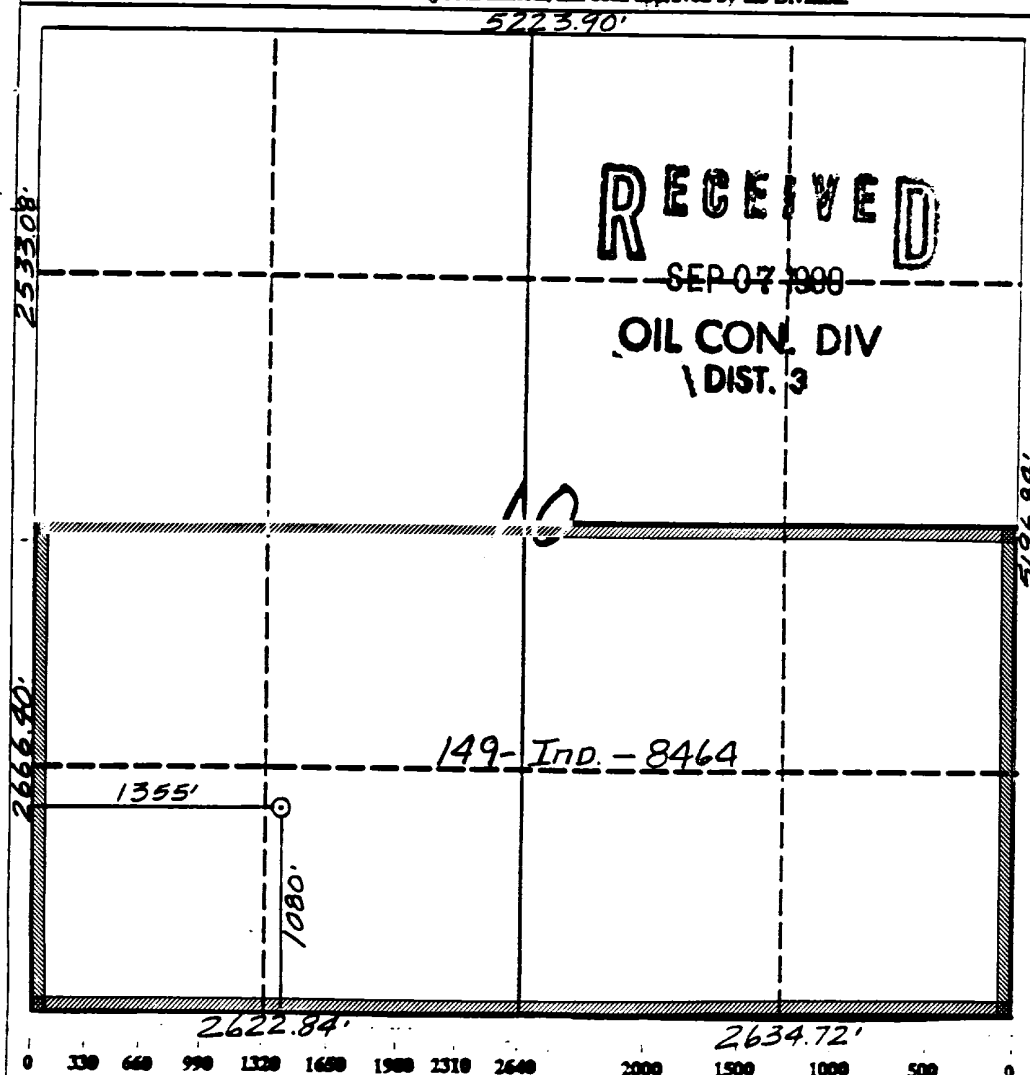
DISTRICT III  
1000 Rio Brazos Rd., Aztec, NM 87410

WELL LOCATION AND ACREAGE DEDICATION PLAT

All Distances must be from the outer boundaries of the section

Operator TEXACO			Lease Nellie Platero		Well No. 8
Unit Letter N	Section 10	Township 27 North	Range 9 West	County San Juan	
Actual Footage Location of Well: 1080 feet from the South line and 1355 feet from the West line					
Ground level Elev. 6119'		Producing Formation Fruitland Coal		Pool Basin Fruitland Coal	
Dedicated Acreage: 320					Acres

1. Outline the acreage dedicated to the subject well by colored pencil or hectare marks on the plat below.
2. If more than one lease is dedicated to the well, outline each and identify the ownership thereof (both as to working interest and royalty).
3. If more than one lease of different ownership is dedicated to the well, have the interest of all owners been consolidated by communitization, unitization, force-pooling, etc.?  
☐ Yes ☐ No If answer is "yes" type of consolidation \_\_\_\_\_  
If answer is "no" list the owners and tract descriptions which have actually been consolidated. (Use reverse side of this form if necessary). \_\_\_\_\_  
No allowable will be assigned to the well until all interests have been consolidated (by communitization, unitization, forced-pooling, or otherwise) or until a non-standard unit, eliminating such interest, has been approved by the Division.



OPERATOR CERTIFICATION

I hereby certify that the information contained herein is true and complete to the best of my knowledge and belief.

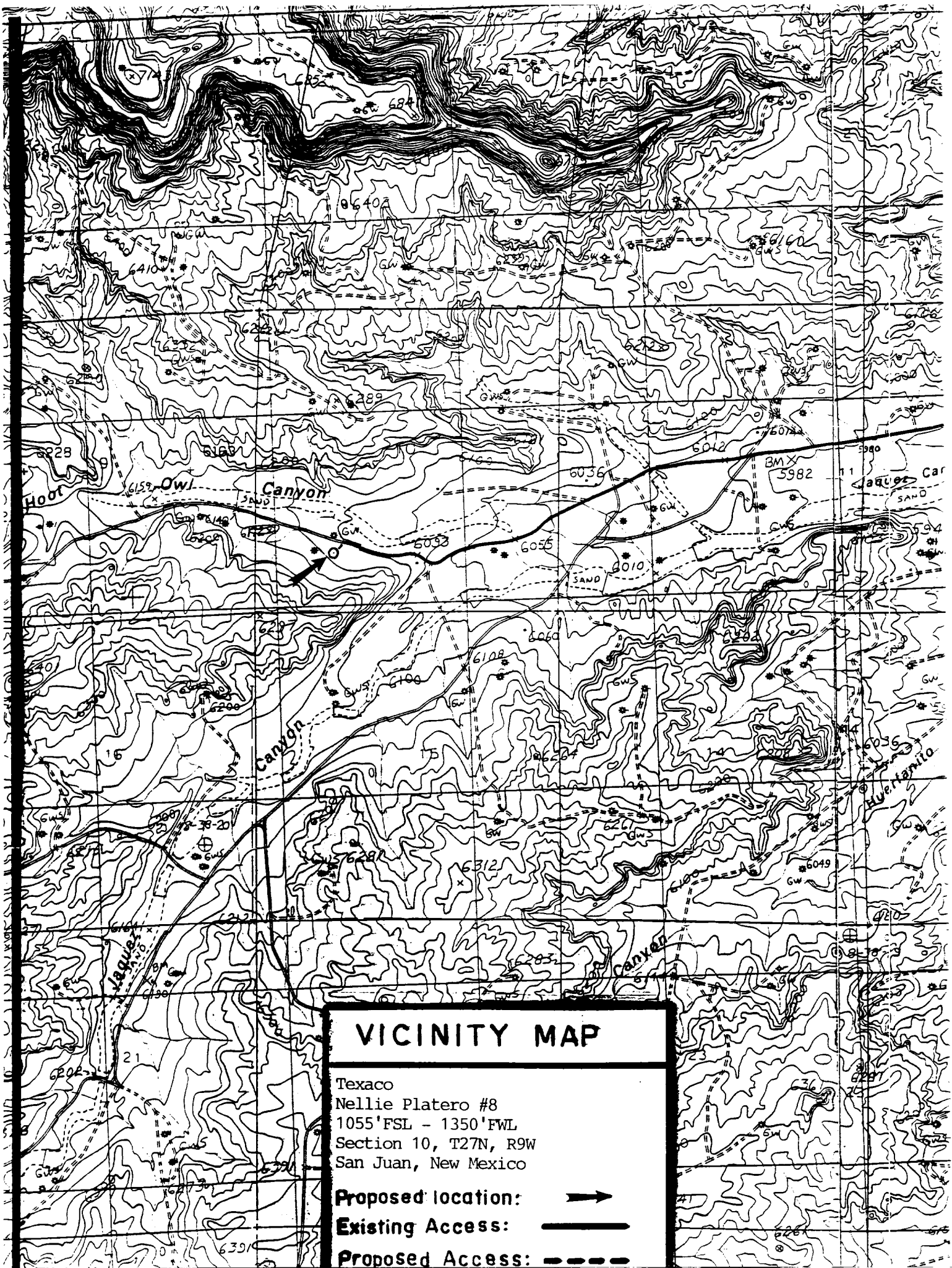
Signature  
*Alan A. Kleier*  
Printed Name  
Alan A. Kleier  
Position  
Area Manager  
Company  
Texaco, Inc.  
Date

SURVEYOR CERTIFICATION

I hereby certify that the well location shown on this plat was plotted from field notes or actual surveys made by me or under my supervision, and that the same is true and correct to the best of my knowledge and belief.



7-13-90

Date Surveyed  
*[Signature]*  
Signature of Professional Surveyor  
*[Signature]*  
New Mexico  
6857  
REGISTERED LAND SURVEYOR  
Certificate No.  
Neale S. Edwards



## VICINITY MAP

Texaco  
Nellie Platero #8  
1055' FSL - 1350' FWL  
Section 10, T27N, R9W  
San Juan, New Mexico

Proposed location:   
Existing Access:   
Proposed Access: 