

APD/ROW

UNITED STATES DEPARTMENT OF THE INTERIOR BUREAU OF LAND MANAGEMENT

APPLICATION FOR PERMIT TO DRILL OR DEEPEN

1a. TYPE OF WORK

DRILL ☒DEEPEN ☐

b. TYPE OF WELL

OIL
WELL ☐GAS
WELL ☒OTHER ☐C70
SINGLE
ZONE ☒MULTIPLE
ZONE ☐

2. NAME OF OPERATOR

Cross Timbers Operating Company

3. ADDRESS AND TELEPHONE NO.

2700 Farmington Ave., Bldg. K, Ste 1 Farmington, NM 87401

4. LOCATION OF WELL (Report location clearly and in accordance with any State requirements.)

At surface

1,000' FNL & 1,000' FWL Section 6, T27N, R10W, Unit D

At proposed prod. zone

Same

14. DISTANCE IN MILES AND DIRECTION FROM NEAREST TOWN OR POST OFFICE*

Please see attached Surface Use Program.

15. DISTANCE FROM PROPOSED*

LOCATION TO NEAREST
PROPERTY OR LEASE LINE, FT.

(Also to nearest drlg. unit line, if any) 1,000'

16. NO. OF ACRES IN LEASE

17. NO. OF ACRES ASSIGNED
TO THIS WELL

NW/4 - 165.53 acres

18. DISTANCE FROM PROPOSED LOCATION*
TO NEAREST WELL, DRILLING, COMPLETED,
OR APPLIED FOR, ON THIS LEASE, FT.

210'

19. PROPOSED DEPTH

1,850'

20. ROTARY OR CABLE TOOLS

Rotary

21. ELEVATIONS (Show whether DF, RT, GR, etc.)

5,759 GL

22. APPROX. DATE WORK WILL START*

12/99

23.

PROPOSED CASING AND CEMENTING PROGRAM

SIZE OF HOLE	GRADE SIZE OF CASING	WEIGHT PER FOOT	SETTING DEPTH	QUANTITY OF CEMENT
8-3/4"	7", J-55	20#	200'	75 sx
6-1/4"	4-1/2", J-55	10.5#	1,850'	175 sx

This action is subject to technical and
procedural review pursuant to 43 CFR 3100.2
and appeal pursuant to 43 CFR 3100.4.

DRILLING OPERATIONS AUTHORIZED ARE
SUBJECT TO COMPLIANCE WITH ATTACHED
"GENERAL REQUIREMENTS"

Surface : 7", 20#, J-55, STC casing at 200'.

75 sx Class "B" cement containing 1/4# celloflack, 2% CaCl₂ (15.6 ppg, 1.18 cuft/sx).

Production: 4-1/2", 10.5#, J-55, STC casing at 1,850'.

Lead: 100 sx of class "B" cement containing 2% (extender), 1/4 pps celloflake & 2% CaCl₂
(11.4 ppg, 2.87 cuft/sx).Tail: 75 sx of class "B" cement containing 2% extender, 1/4 pps celloflake & 2% CaCl₂
(13.5 ppg, 1.71 cuft/sx).

Remarks: Use 25% excess over volume calculated from open hole logs to bring TOC up to surface.

IN ABOVE SPACE DESCRIBE PROPOSED PROGRAM: If proposal is to deepen, give data on present productive zone and proposed new productive zone. If proposal is to drill or deepen directionally, give pertinent data on subsurface locations and measured and true vertical depths. Give blowout preventer program, if any.

24.

SIGNED

TITLE Thomas DeLong, Prod Engineer

DATE 11/1/99

(This space for Federal or State office use)

PERMIT NO. _____

APPROVAL DATE

Application approval does not warrant or certify that the applicant holds legal or equitable title to those rights in the subject lease which would entitle the applicant to conduct operations thereon.
CONDITIONS OF APPROVAL, IF ANY:

APPROVED BY

TITLE

DATE

*See Instructions On Reverse Side

Title 18 U.S.C. Section 1001, makes it a crime for any person knowingly and willfully to make to any department or agency of the United States any false, fictitious or fraudulent statements or representations as to any matter within its jurisdiction.

NMOCB

District II
PO Drawer DD, Artesia, NM 88211-0719

District III
1000 Rio Brazos Rd., Aztec, NM 87410

OIL CONSERVATION DIVISION
PO Box 2088
Santa Fe, NM 87504-2088

Submit to Appropriate District Office
State Lease - 4 Copies
Fee Lease - 3 Copies

District IV
PO Box 2086, Santa Fe, NM 87504-2088

088
 59 MAY -3 11:43 AMENDED REPORT

WELL LOCATION AND ACREAGE DEDICATION PLAT

'API Number 30-045-30037	'Pool Code 77200	'Pool Name FULCHER KUTZ PICTURED CLIFFS
'Property Code 23610	'Property Name M. N. GALT "B"	'Well Number 2R
'OGRID No. 167057	'Operator Name CROSS TIMBERS OPERATING COMPANY	'Elevation 5759'

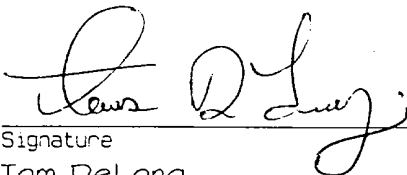
¹⁰ Surface Location

UL or lot no.	Section	Township	Range	Lot 1st	Feet from the	North/South line	Feet from the	East/West line	County
D	5	27N	10W		1000	NORTH	1000	WEST	SAN JUAN

¹¹Bottom Hole Location If Different From Surface

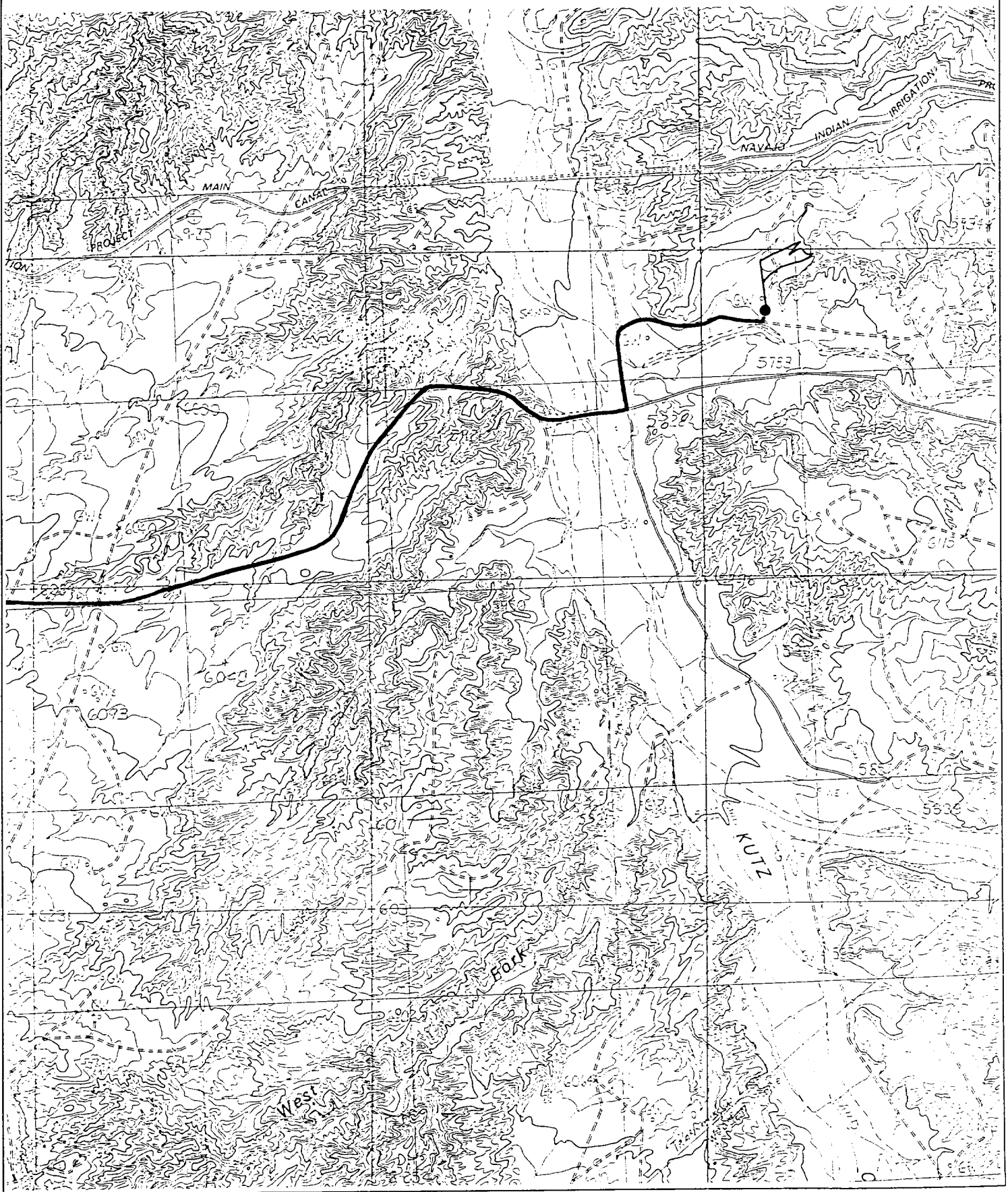
U. or lot no.	Section	Township	Range	Lot Id.	Feet from line	North/South line	Feet from the	East/West line	County
¹² Dedicated Acres 165.53 NW 1/4		¹³ Joint or Infill		¹⁴ Consolidation Code		¹⁵ Order No.			

NO ALLOWABLE WILL BE ASSIGNED TO THIS COMPLETION UNTIL ALL INTERESTS HAVE BEEN CONSOLIDATED
OR A NON-STANDARD UNIT HAS BEEN APPROVED BY THE DIVISION

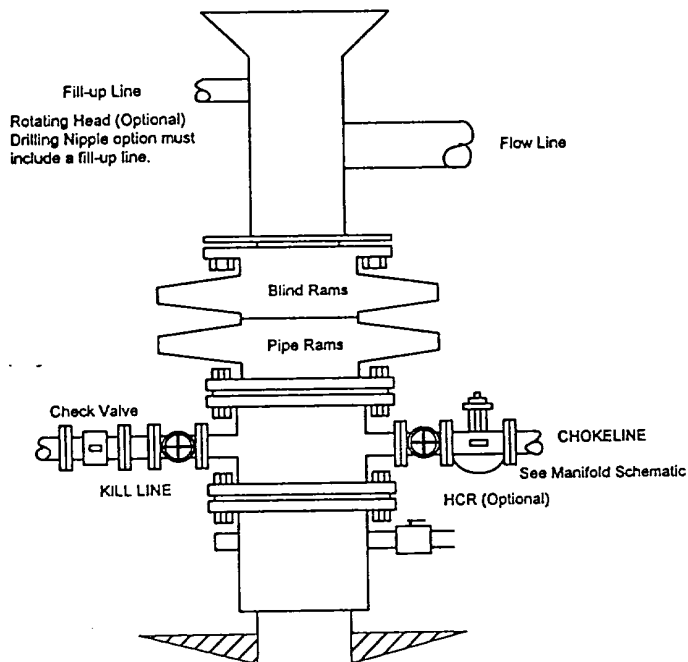
1403.82'	1320.00'	2640.00'	1331.22' 1320.00' 1320.00' 2640.00'	17 OPERATOR CERTIFICATION I hereby certify that the information contained herein is true and complete to the best of my knowledge and belief.  Signature Tom DeLong Printed Name Production Engineer Title 8-25-99 Date
LOT 4 1000' 1000'	LOT 3	LOT 2		LOT 1
5280.00'	LOT 5	6 DEC 9 1999		
LOT 6				
LOT 7				
1421.64'	1320.00'	2640.00'		

CROSS TIMBERS OPERATING COMPANY M. N. GALT "B" #2R

1000' FNL & 1000' FWL, SECTION 6, T27N, R10W, N.M.P.M.
SAN JUAN COUNTY, NEW MEXICO



BOPE SCHEMATIC FOR DRILLING OPERATIONS
 CLASS 1 - NORMAL PRESSURE
 CROSS TIMBERS OPERATING COMPANY STANDARD



CHOKE MANIFOLD SCHEMATIC FOR DRILLING OPERATIONS
 2M SERVICE
 CROSS TIMBERS OPERATING COMPANY STANDARD

