

District I
1625 N. French Dr., Hobbs, NM 88240
District II
811 South First, Artesia, NM 88210
District III
1000 Rio Brazos Road, Aztec, NM 87410
District IV
2040 South Pacheco, Santa Fe, NM 87505

State of New Mexico
Energy Minerals and Natural Resources

Form C-101
Revised March 17, 1999

Oil Conservation Division
2040 South Pacheco
Santa Fe, NM 87505

Submit to appropriate District Office
State Lease - 6 Copies
Fee Lease - 5 Copies

☐ AMENDED REPORT

APPLICATION FOR PERMIT TO DRILL, RE-ENTER, DEEPEN, PLUGBACK, OR ADD A ZONE

¹ Operator Name and Address FOUR STAR OIL AND GAS CO. 3300 N BUTLER SUITE 100 FARMINGTON, N.M. 87401		² OGRID Number 131994
³ Property Code 17660		⁴ Property Name Blanco Com
⁵ Surface Location 0168L9545		⁶ API Number 36045-30196
⁷ Well No. 5-A		

UL or lot no.	Section	Township	Range	Lot Idn	Feet from the	North/South line	Feet from the	East/West line	County
E	2	27N	9W		1425	NORTH	745	WEST	SAN JUAN

⁸ Proposed Bottom Hole Location If Different From Surface									
UL or lot no.	Section	Township	Range	Lot Idn	Feet from the	North/South line	Feet from the	East/West line	County
⁹ Proposed Pool 1 Blanco MESA VERDE					¹⁰ Proposed Pool 2				

¹¹ Work Type Code N	¹² Well Type Code G	¹³ Cable/Rotary R	¹⁴ Lease Type Code S	¹⁵ Ground Level Elevation 6189'
¹⁶ Multiple NO	¹⁷ Proposed Depth 4850	¹⁸ Formation nmv	¹⁹ Contractor	²⁰ Spud Date 6/1/2000

²¹ Proposed Casing and Cement Program					
Hole Size	Casing Size	Casing weight/foot	Setting Depth	Sacks of Cement	Estimated TOC
12-1/4"	8-5/8"	32#	350'	260SX	SURFACE
7-7/8"	5-1/2"	15.5#	4850'	480SX	SURFACE

22 Describe the proposed program. If this application is to DEEPEN or PLUG BACK, give the data on the present productive zone and proposed new productive zone. Describe the blowout prevention program, if any. Use additional sheets if necessary.

22 FOUR STAR OIL AND GAS CO. PROPOSES TO DRILL THIS DEVELOPMENT WELL TO A DEPTH OF 4850'. THIS WELL WILL TEST THE PRODUCTIVITY

23 OF THE MESA VERDE FORMATION. IF THE WELL IS UNPRODUCTIVE, IT WILL BE PLUGGED AND ABANDONED AS PER STATE REQUIREMENTS.

24

25 BOND COVERAGE FOR THIS WELL IS PROVIDED BY BOND NO. K02907914-C4073(NATION WIDE BLM BOND)& BOND NO. K02907914-F4072

26 (NATION WIDE BIA BOND)

27

28 A THREATENED -ENDANGERED SPECIES SURVEY AND ARCHAEOLOGICAL SURVEY WERE PERFORMED AS REQUIRED.

²³ I hereby certify that the information given above is true and complete to the best of my knowledge and belief. Signature: <u>Arthur D. Archibegue</u>		OIL CONSERVATION DIVISION	
Printed name: <u>Arthur D. Archibegue</u>		Approved by: <u>Charles T. Lewis</u>	
Title: <u>Engineer Assistant</u>		Title: <u>DEPUTY OIL & GAS INSPECTOR, DIST. 3</u>	
Date: <u>3/22/2000</u>		Approval Date: <u>MAR 24 2000</u> Expiration Date: <u>MAR 24 2001</u>	
Phone: <u>505-325-4397 EX 26</u>		Conditions of Approval: Attached <input type="checkbox"/>	

District I
PO Box 1990, Hobbs, NM 88241-1990

District II
PO Box 1990, Artesia, NM 88211-0719

District III
1000 Rio Brazos Rd., Aztec, NM 87410

District IV
PO Box 2088, Santa Fe, NM 87504-2088

State of New Mexico
Energy, Minerals & Natural Resources Department

OIL CONSERVATION DIVISION
PO Box 2088
Santa Fe, NM 87504-2088

Form C-102
Revised February 21, 1994
Instructions on back
Submit to Appropriate District Office
State Lease - 4 Copies
Fee Lease - 3 Copies

☐ AMENDED REPORT

WELL LOCATION AND ACREAGE DEDICATION PLAT

*API Number 30-045-30196		*Pool Code 72319	*Pool Name BLANCO MESAVERDE
*Property Code 17660	*Property Name BLANCO COM		*Well Number 5A
*GRID No. 131994	*Operator Name FOUR STAR OIL & GAS COMPANY		*Elevation 6189

¹⁰ Surface Location

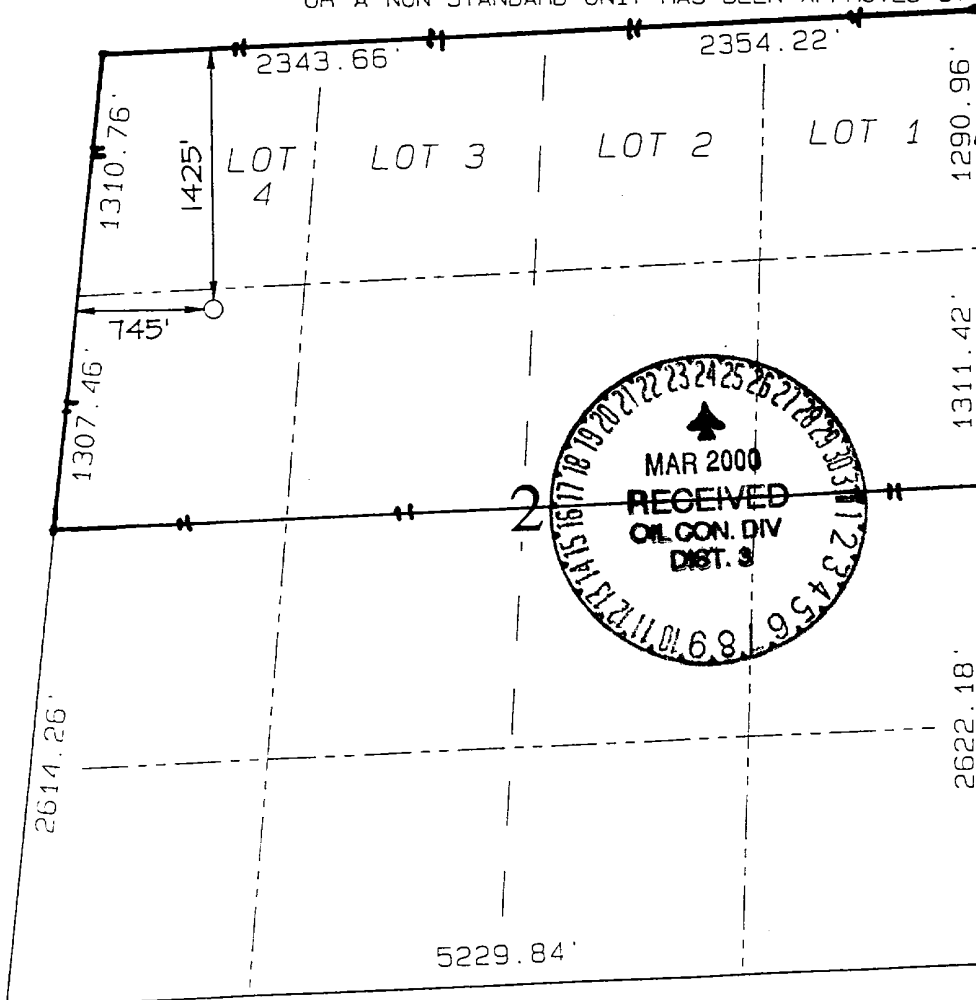
UL or lot no. E	Section 2	Township 27N	Range 9W	Lot Idn	Feet from the 1425	North/South line NORTH	Feet from the 745	East/West line WEST	County SAN JUAN
---------------------------	---------------------	------------------------	--------------------	---------	------------------------------	----------------------------------	-----------------------------	-------------------------------	---------------------------

¹¹ Bottom Hole Location If Different From Surface

UL or lot no.	Section	Township	Range	Lot Idn	Feet from the	North/South line	Feet from the	East/West line	County
---------------	---------	----------	-------	---------	---------------	------------------	---------------	----------------	--------

¹² Dedicated Acres 3.19 320 N 2	¹³ Joint or Infill infill	¹⁴ Consolidation Code	¹⁵ Order No.
--	--	----------------------------------	-------------------------

NO ALLOWABLE WILL BE ASSIGNED TO THIS COMPLETION UNTIL ALL INTERESTS HAVE BEEN CONSOLIDATED
OR A NON-STANDARD UNIT HAS BEEN APPROVED BY THE DIVISION



¹⁷ OPERATOR CERTIFICATION
I hereby certify that the information contained herein is true and complete to the best of my knowledge and belief

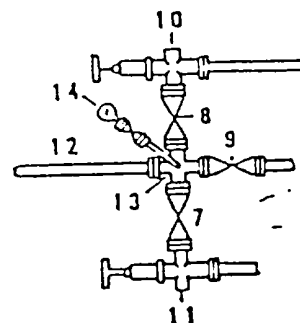
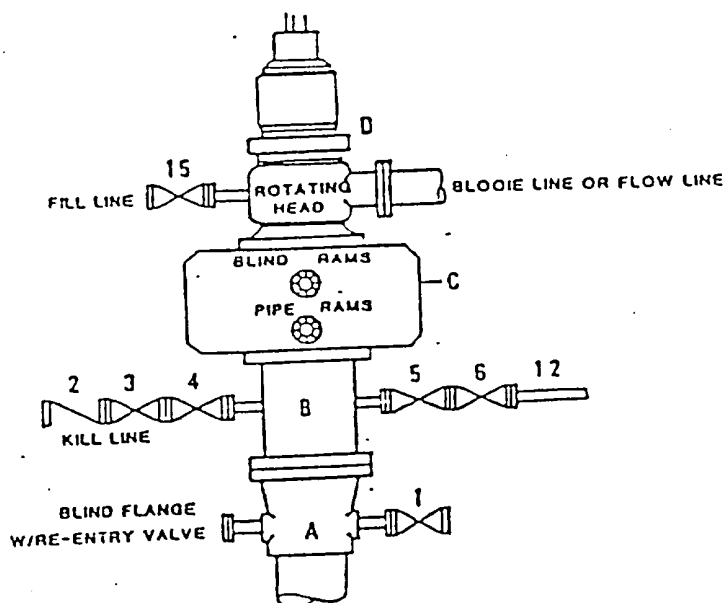
Arthur D. Archibegue
Signature
Arthur D. Archibegue
Printed Name
Engineer Assistant
Title
3/27/2000
Date

¹⁸ SURVEYOR CERTIFICATION
I hereby certify that the well location shown on this plat was plotted from field notes of actual surveys made by me or under my supervision and that the same is true and correct to the best of my belief.

FEBRUARY 7, 2000
Date of Survey
NEALE C. EDWARDS
Signature and Seal
6857
Certificate Number
6857

**DRILLING CONTROL
CONDITION II-B 3000 WP**
**FOR AIR DRILLING OR
WHERE NITROGEN OR AIR BLOWS ARE EXPECTED**

H₂S TRIM REQUIRED
YES _____ NO _____



DRILLING CONTROL

MATERIAL LIST - CONDITION II - B

- | | |
|----------------|---|
| A | Texaco Wellhead |
| B | 3000# W.P. drilling spool with a 2" minimum flanged outlet for kill line and 3" minimum flanged outlet for choke line. |
| C | 3000# W.P. Dual ram type preventer, hydraulic operated with 1" steel, 3000# W.P. control lines (where sub-structure height is adequate, 2 - 3000# W.P. single ram type preventers may be utilized). |
| D | Rotating Head with fill up outlet and extended Bloode Line. |
| 1, 3, 4, 7, 8. | 2" minimum 3000# W.P. flanged full opening steel gate valve, or Halliburton Lo Torc Plug valve. |
| 2 | 2" minimum 3000# W.P. back pressure valve. |
| 5, 6, 9 | 3" minimum 3000# W.P. flanged full opening steel gate valve, or Halliburton Lo Torc Plug valve. |
| 12 | 3" minimum schedule 80, Grade "B", seamless line pipe. |
| 13 | 2" minimum x 3" minimum 3000# W.P. flanged cross. |
| 10, 11 | 2" minimum 3000# W.P. adjustable choke bodies. |
| 14 | Cameron Mud Gauge or equivalent (location optional in choke line). |
| 15 | 2" minimum 3000# W.P. flanged or threaded full opening steel gate valve, or Halliburton Lo Torc Plug valve. |



TEXACO, INC.
WELLHEAD DIVISION



FOUR STAR OIL & GAS COMPANY BLANCO COM #5A

1425' FNL & 745' FWL, SECTION 2, T27N, R9W, N.M.P.M.
SAN JUAN COUNTY, NEW MEXICO

