

UNITED STATES
DEPARTMENT OF THE INTERIOR
BUREAU OF LAND MANAGEMENT

APPLICATION FOR PERMIT TO DRILL, DEEPEN, OR PLUG BACK

| | |
|--|---|
| 1a. Type of Work DRILL | 5. Lease Number SF-077384 Unit Reporting Number |
| 1b. Type of Well GAS | 6. If Indian, All. or Tribe |
| 2. Operator BURLINGTON RESOURCES Oil & Gas Company | 7. Unit Agreement Name |
| 3. Address & Phone No. of Operator PO Box 4289, Farmington, NM 87499 (505) 326-9700 | 8. Farm or Lease Name Galt A 28009 9. Well Number #1R |
| 4. Location of Well 1860' FNL, 1830' FEL Latitude 36° 36.4, Longitude 107° 56.06 | 10. Field, Pool, Wildcat Fulcher Kutz Pict'd Cliffs 11. Sec., Twn, Rge, Mer. (NMPM) 6 Sec. 6, T-27-N, R-10-W API # 30-045-30499 |
| 14. Distance in Miles from Nearest Town 13 miles from Bloomfield, NM | 12. County San Juan 13. State NM |
| 15. Distance from Proposed Location to Nearest Property or Lease Line 1830' | |
| 16. Acres in Lease | 17. Acres Assigned to Well 160.51 NE/4 |
| 18. Distance from Proposed Location to Nearest Well, Drig, Compl, or Applied for on this Lease 883' | |
| 19. Proposed Depth 1919' | 20. Rotary or Cable Tools Rotary |
| 21. Elevations (DF, FT, GR, Etc.) 5813' GR | 22. Approx. Date Work will Start |
| 23. Proposed Casing and Cementing Program See Operations Plan attached | |
| 24. Authorized by: <u>[Signature]</u> Regulatory/Compliance Supervisor | Date <u>12-29-00</u> |

PERMIT NO. _____ APPROVAL DATE 4/25/01
APPROVED BY /s/ Joel Farrell TITLE _____ DATE APR 25

Archaeological Report to be submitted
Threatened and Endangered Species Report to be submitted

NOTE: This format is issued in lieu of U.S. BLM Form 3160-3

Title 18 U.S.C. Section 1001, makes it a crime for any person knowingly and willfully to make to any department or agency of the United States any false, fictitious or fraudulent statements or presentations as to any matter within its jurisdiction.

DISTRICT I
1625 N. French Dr., Hobbs, N.M. 88240

DISTRICT II
811 South First, Artesia, N.M. 88210

DISTRICT III
1000 Rio Brazos Rd., Aztec, N.M. 87410

DISTRICT IV
2040 South Pacheco, Santa Fe, NM 87505

State of New Mexico
Energy, Minerals & Natural Resources Department

Form C-102
Revised August 15, 2000

Submit to Appropriate District Office
State Lease - 4 Copies
Fee Lease - 3 Copies

OIL CONSERVATION DIVISION
2040 South Pacheco
Santa Fe, NM 87505

☐ AMENDED REPORT

WELL LOCATION AND ACREAGE DEDICATION PLAT

| | | | |
|---|---|---------------------------------|--|
| ¹ API Number 30-045-30499 | | ² Pool Code 77200 | ³ Pool Name Fulcher Kutz Pictured Cliffs |
| ⁴ Property Code 28009 | ⁵ Property Name GALT A | | ⁶ Well Number 1R |
| ⁷ OGRIID No. 14538 | ⁸ Operator Name BURLINGTON RESOURCES OIL & GAS INC. | | ⁹ Elevation 5813 |

¹⁰ Surface Location

| UL or lot no. | Section | Township | Range | Lot Idn | Feet from the | North/South line | Feet from the | East/West line | County |
|---------------|---------|----------|-------|---------|---------------|------------------|---------------|----------------|----------|
| G | 6 | 27-N | 10-W | | 1860 | NORTH | 1830 | EAST | SAN JUAN |

¹¹ Bottom Hole Location If Different From Surface

| UL or lot no. | Section | Township | Range | Lot Idn | Feet from the | North/South line | Feet from the | East/West line | County |
|--|---------|----------|-------------------------------|---------|----------------------------------|------------------|-------------------------|----------------|--------|
| | | | | | | | | | |
| ¹² Dedicated Acres NE/160.51 | | | ¹³ Joint or Infill | | ¹⁴ Consolidation Code | | ¹⁵ Order No. | | |

NO ALLOWABLE WILL BE ASSIGNED TO THIS COMPLETION UNTIL ALL INTERESTS HAVE BEEN CONSOLIDATED
OR A NON-STANDARD UNIT HAS BEEN APPROVED BY THE DIVISION

| | | | | | |
|------------------------------------|-------|--|-----------|------------------------------------|--|
| FD 3 1/2" BLM 1913 BRASS CAP | | S 89°52'51" E 5370.07' (M) | | FD 3 1/2" BLM 1913 BRASS CAP | |
| LOT 4 | LOT 3 | LOT 2 | SF-077384 | LOT 1 | |
| LOT 5 | | LAT: 36°36.4' N. LONG: 107°56.06' W. SF-077384 | | 1830' | |
| LOT 6 | | 6 | | N 00°05'22" W 5294.03' (M) | |
| LOT 7 | | | | FD 2 1/2" GLO 1911 BRASS CAP | |

17 OPERATOR CERTIFICATION

I hereby certify that the information contained herein
is true and complete to the best of my knowledge and
belief.

Signature

Peggy Cole

Printed Name

Regulatory Supervisor

Title

Date

12-29-00

18 SURVEYOR CERTIFICATION

I hereby certify that the well location shown on this plat
was plotted from field notes of actual surveys made by
me or under my supervision, and that the same is true
and correct to the best of my belief.

Date of Survey

Signature and Seal of Professional Surveyor

Certificate Number

8894

BURLINGTON RESOURCES OIL & GAS, INC.

GALT A # 1R

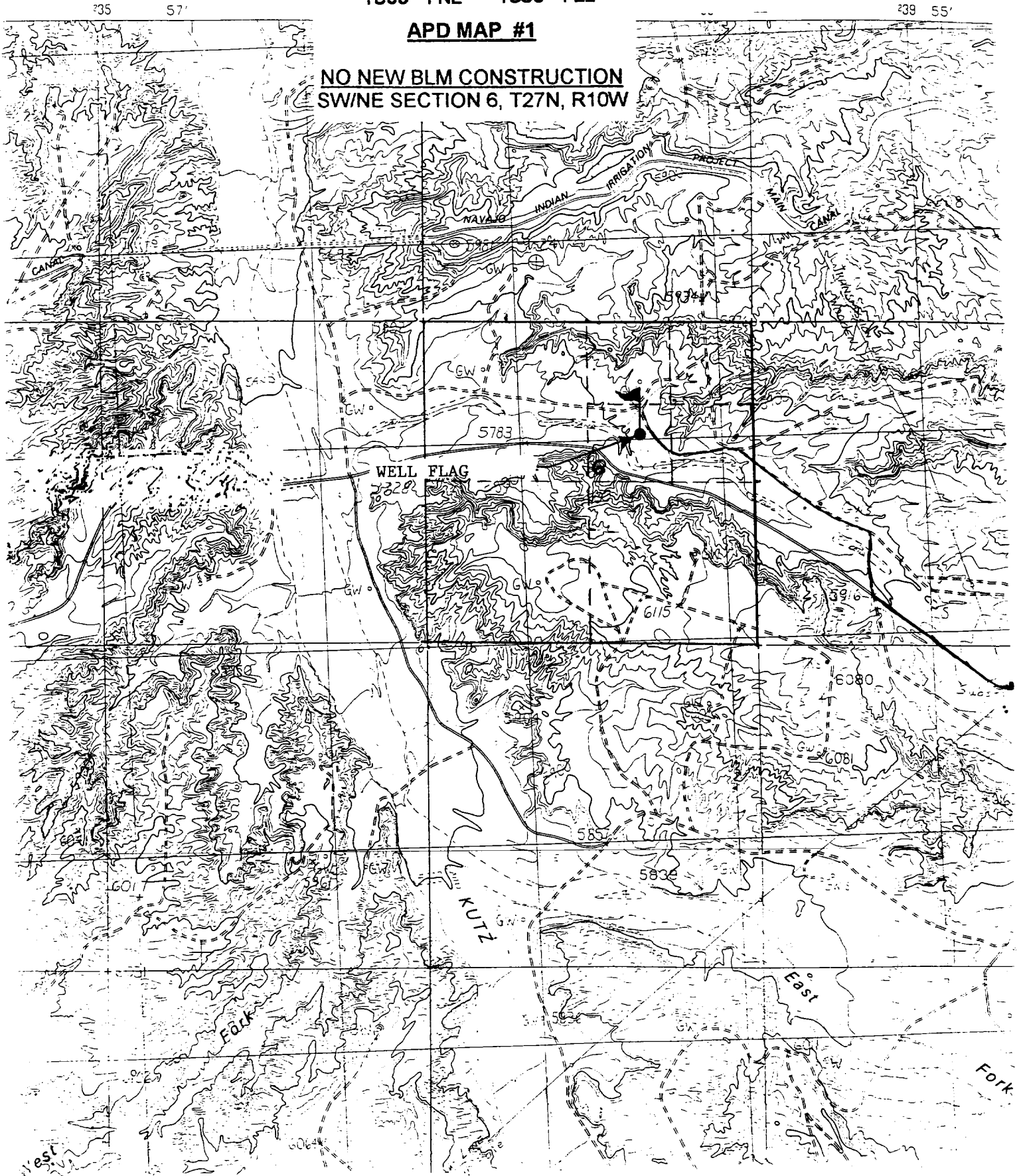
NE/4 SEC. 6, T-27-N, R-10-W, N.M.P.M.

SAN JUAN COUNTY, NEW MEXICO

1850' FNL 1830' FEL

APD MAP #1

NO NEW BLM CONSTRUCTION
SW/NE SECTION 6, T27N, R10W



OPERATIONS PLAN

Well Name: Galt A #1R
Location: 1860' FNL, 1830' FEL, Section 6, T-27-N, R-10-W
San Juan County, New Mexico
Latitude 36° 36.4' N, Longitude 107° 56.06' W
Formation: Fulcher Kutz Pictured Cliffs
Elevation: 5813' GR

| Formation: | Top | Bottom | Contents |
|--------------------|--------------|--------|----------|
| Surface | San Jose | 654' | |
| Ojo Alamo | 654' | 781' | aquifer |
| Kirtland | 781' | 1224' | gas |
| Fruitland | 1224' | 1719' | gas |
| Pictured Cliffs | 1719' | | gas |
| Total Depth | 1919' | | |

Logging Program: cased hole - CBL/GR/CCL TD to surface

Coring Program: None

Mud Program:

| Interval | Type | Weight | Vis. | Fluid Loss |
|-----------|------|---------|-------|------------|
| 0-120' | Spud | 8.4-9.0 | 40-50 | no control |
| 120-1919' | FW | 8.4-9.0 | 32-45 | no control |

Casing Program (as listed, equivalent, or better):

| Hole Size | Depth Interval | Csg. Size | Wt. | Grade |
|-----------|----------------|-----------|------|-------|
| 8 3/4" | 0 - 120' | 7" | 20# | J-55 |
| 6 1/4" | 0 - 1919' | 2 7/8" | 6.5# | J-55 |

Float Equipment: 7" surface casing - saw tooth guide shoe.
Centralizers will be run in accordance with Onshore Order #2.

2 7/8" production casing - float shoe on bottom. Three centralizers run every other joint above shoe. Seven centralizers run every 3rd joint to the base of the Ojo Alamo @ 781'. Two turbolizing type centralizers - one below and one into the base of the Ojo Alamo @ 781'. Standard centralizers thereafter every fourth joint up to the base of the surface pipe.

Wellhead Equipment: 7" x 2 7/8" 2000 psi screw on independent wellhead.

Cementing:

7" surface casing - cement with 46 sx Class "H" cement with 1/4# flocele/sx and 3% calcium chloride (54 cu.ft. of slurry, 200% excess to circulate to surface). WOC 8 hrs. Test casing to 600 psi for 30 minutes.

2 7/8" production casing - Lead w/205 sx Class "G" TXI lightweight cement w/2.5% sodium metasilicate, 1/2 pps flocele, 10 pps gilsonite, 2% calcium chloride, and 0.2% antifoam agent. Tail w/90 sx 50/50 Class "G" Poz w/2% gel, 2% calcium chloride, 1/4 pps flocele, 5 pps gilsonite, and 0.1% antifoam agent (645 cu.ft. of slurry, 100% excess to circulate to surface).

Note: If open hole logs are run, cement volumes will be based on 25% excess over caliper volumes.

BOP and tests:

Surface to TD - 11" 2000 psi (minimum double gate BOP stack (Reference Figure #1). Prior to drilling out surface casing, test rams to 600 psi/30 min.

Completion - 7 1/16" 2000 psi (minimum) double gate BOP stack (Reference Figure #2). Prior to completion operations, test rams and casing to 2000 psi/15 min.

From surface to TD - choke manifold (Reference Figure #3).

Pipe rams will be actuated to least once each day and blind rams actuated once each trip to test proper functioning. An upper kelly cock valve with handle and drill string safety valves to fit each drill string will be maintained and available on the rig floor.

Additional information:

- * The Pictured Cliffs formation will be completed.
- * Anticipated pore pressure for the Pictured Cliffs is 500 psi.
- * This gas is dedicated.
- * The northeast quarter of Section 6 is dedicated to the Pictured Cliffs.

E. J. Giles
Drilling Engineer

12/29/00
Date