

APPLICATION FOR PERMIT TO DRILL, DEEPEN, OR PLUG BACK

PERMIT NO. _____ APPROVAL DATE 8/23/01
APPROVED BY /s/ Joel Farrell TITLE _____ DATE _____

1408

District I
PO Box 1980, Hobbs, NM 88241-1980

District II
PO Drawer DD, Artesia, NM 88211-0719

District III
1000 Rio Brazos Rd., Aztec, NM 87410

District IV
PO Box 2088, Santa Fe, NM 87504-2088

State of New Mexico
Energy, Minerals & Natural Resources Department

OIL CONSERVATION DIVISION
PO Box 2088
Santa Fe, NM 87504-2088

Form C-102
Revised February 21, 1994
Instructions on back
Submit to Appropriate District Office
State Lease - 4 Copies
Fee Lease - 3 Copies

☐ AMENDED REPORT

WELL LOCATION AND ACREAGE DEDICATION PLAT

*API Number 30-045- 30699		*Pool Code 71629	*Pool Name Basin Fruitland Coal
*Property Code 7139	*Property Name HUERFANO UNIT		*Well Number 2585
*OGRID No. 14538	*Operator Name BURLINGTON RESOURCES OIL & GAS COMPANY LP		*Elevation 6451'

¹⁰ Surface Location

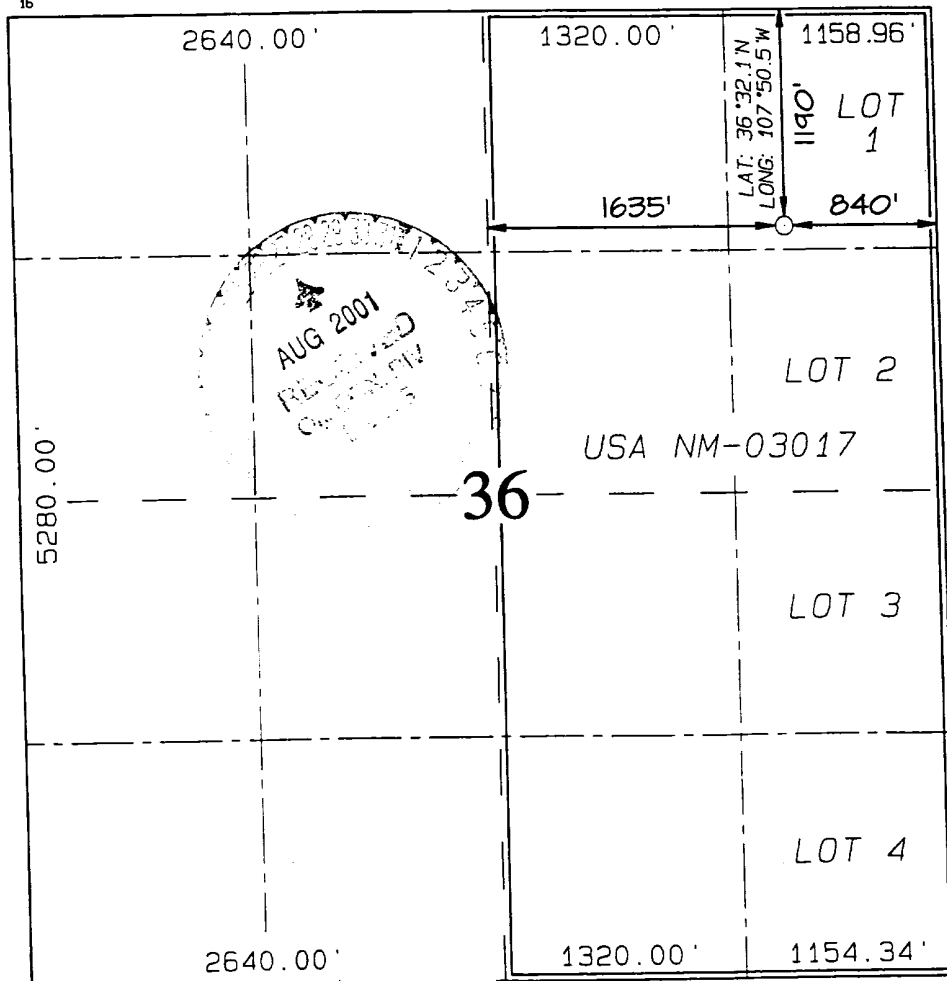
UL or lot no.	Section	Township	Range	Lot Idn	Feet from the	North/South line	Feet from the	East/West line	County
A	36	27N	10W		1190	NORTH	840	EAST	SAN JUAN

¹¹ Bottom Hole Location If Different From Surface

UL or lot no.	Section	Township	Range	Lot Idn	Feet from the	North/South line	Feet from the	East/West line	County
¹² Dedicated Acres E/300.2		¹³ Joint or Infill		¹⁴ Consolidation Code		¹⁵ Order No. R-11634			

NO ALLOWABLE WILL BE ASSIGNED TO THIS COMPLETION UNTIL ALL INTERESTS HAVE BEEN CONSOLIDATED
OR A NON-STANDARD UNIT HAS BEEN APPROVED BY THE DIVISION

¹⁶



¹⁷ OPERATOR CERTIFICATION
I hereby certify that the information contained herein is true and complete to the best of my knowledge and belief

Peggy Cole
Signature

Peggy Cole
Printed Name
Regulatory Supervisor
Title

4-30-01
Date

¹⁸ SURVEYOR CERTIFICATION
I hereby certify that the well location shown on this plat was plotted from field notes of actual surveys made by me or under my supervision, and that the same is true and correct to the best of my belief.

MARCH 21, 2001
Date of Survey

NEALE C. EDWARDS
Signature and Seal of Professional Surveyor



Certificate Number **6857**

Canyon

UNITED STATES
DEPARTMENT OF THE INTERIOR
BUREAU OF LAND MANAGEMENT

Sundry Notices and Reports on Wells

1. Type of Well
GAS

2. Name of Operator

**BURLINGTON
RESOURCES**

OIL & GAS COMPANY

3. Address & Phone No. of Operator

PO Box 4289, Farmington, NM 87499 (505) 326-9700

4. Location of Well, Footage, Sec., T, R, M

1190' FNL, 840' FEL, Sec. 36, T-27-N, R-10-W, NMPM

5. Lease Number
NM-03017

6. If Indian, All. or
Tribe Name

7. Unit Agreement Name
Huerfano Unit

8. Well Name & Number
Huerfano Unit #258S

9. API Well No.
30-045-

10. Field and Pool
Basin Fruitland Coal

11. County and State
San Juan Co, NM

12. CHECK APPROPRIATE BOX TO INDICATE NATURE OF NOTICE, REPORT, OTHER DATA

Type of Submission

Type of Action

☒ Notice of Intent

☐ Abandonment

☒ Change of Plans

☐ Subsequent Report

☐ Recompletion

☐ New Construction

☐ Final Abandonment

☐ Plugging Back

☐ Non-Routine Fracturing

☐ Casing Repair

☐ Water Shut off

☐ Altering Casing

☐ Conversion to Injection

☐ Other -

13. Describe Proposed or Completed Operations

It is intended to alter the casing and cementing program of the subject well according to the attached operations plan.



14. I hereby certify that the foregoing is true and correct.

Signed Debbie Call Title Regulatory Supervisor Date 8/13/01
TLW

(This space for Federal or State Office use)

APPROVED BY _____ Title _____ Date 8/23/01

CONDITION OF APPROVAL, if any:

Title 18 U.S.C. Section 1001, makes it a crime for any person knowingly and willfully to make to any department or agency of the United States any false, fictitious or fraudulent statements or representations as to any matter within its jurisdiction.

3160-5

OPERATIONS PLAN

Well Name: Huerfano Unit #258S
Location: 1190' FNL, 840' FEL Section 36, T-27-N, R-10-W
Latitude 36° 32.1'N, Longitude 107° 50.5'W
San Juan County, NM
Formation: Basin Fruitland Coal
Elevation: 6451'GL

Formation:	Top	Bottom	Contents
Surface	San Jose	1374'	
Ojo Alamo	1374'	1437'	aquifer
Kirtland	1437'	1972'	gas
Fruitland	1972'	2215'	gas
Pictured Cliffs	2215'	2465'	gas
Total Depth	2465'		

Logging Program: Platform Express from TD to surface, Dipole Sonic, ECS, MRIL
TD to Fruitland top.

Mudlog: 2 Man unit from Ojo Alamo to TD.

Coring Program: none

Mud Program:

Interval	Type	Weight	Vis.	Fluid Loss
0- 200'	Spud	8.4-9.0	40-50	no control
200-2465'	Non-dispersed	8.4-9.5	30-60	no control

Casing Program (as listed, the equivalent, or better):

Hole Size	Depth Interval	Csg. Size	Wt.	Grade
12 1/4"	0' - 200'	8 5/8"	24.0#	J-55
7 7/8"	0' - 2465'	4 1/2"	10.5#	K-55

Tubing Program:

0' - 2465'	2 3/8"	4.7#	J-55
------------	--------	------	------

Float Equipment: 8 5/8" surface casing - saw tooth guide shoe. Centralizers will be run in accordance with Onshore Order #2.

4 1/2" production casing - guide shoe and self-fill float collar. Three centralizers run every other joint above shoe. Seven centralizers run every third joint to the base of the Ojo Alamo @ 1437'. Two turbolizing type centralizers - one below and one into the base of the Ojo Alamo @ 1437'. Standard centralizers thereafter every fourth joint up to the base of the surface pipe.

Wellhead Equipment: 8 5/8" x 4 1/2" x 2 3/8" x 11" 2000 psi xmas tree assembly.

Cementing:

8 5/8" surface casing - cement with 210 sx Class "B" cement with 1/4# flocele/sx and 3% calcium chloride (248 cu.ft. of slurry, 200% excess to circulate to surface). WOC 8 hrs. Test casing to 600 psi/30 minutes.

4 1/2" production casing - lead w/456 sacks Premium Lite cmt with 3% calcium chloride, 0.25 pps flocelle, 5 pps LCM-1, 0.4% FL-52, and 0.4% SMS. Tail with 110 sacks Type III cmt with 1% calcium chloride, 1/4#/sack flocelle, and 0.2% FL-52 (1123 cu.ft., 100% excess to circulate to surface).

Note: If open hole logs are run, cement volumes will be based on 25% excess over caliper volumes.

Huerfano Unit #258S

BOP and tests:

Surface to TD - 11" 2000 psi (minimum) double gate BOP stack (Reference Figure #1). Prior to drilling out surface casing, test rams to 600#/30 min.

Completion - 7 1/6" 2000 psi (minimum) double gate BOP stack (Reference Figure #2). Prior to completion operations, test blind rams and casing to 1500 psi for 30 minutes; all pipe rams and casing to 1500 psi for 30 minutes each.

From surface to TD - choke manifold (Reference Figure #3).

Pipe rams will be actuated at least once each day and blind rams actuated once each trip to test proper functioning. An upper kelly cock valve with handle and drill string safety valves to fit each drill string will be maintained and available on the rig floor.

BOP and tests (If a coiled tubing drilling (CTD) rig is utilized.):

Surface to TD: 7-1/16" 2000 psi (minimum) Torus annular BOP stack (Reference Figure #1b). Prior to drilling out surface casing, test annular BOP to 600psi/30 min.

Completion: 7-1/16" 2000 psi (minimum) double gate BOP stack (Reference Figure #2). Prior to completion operations, test blind rams and casing to 1500 psi for 30 minutes; all pipe rams and casing to 1500 psi for 30 minutes each.

From surface to TD: choke manifold (Reference Figure #3).

The annular BOP will be actuated to close on drill pipe (coiled tubing) at least once each day and to close on open hole once each trip to test proper functioning.

Additional information:

- * The Fruitland Coal formation will be completed.
- * Anticipated pore pressure for the Fruitland is 500 psi.
- * This gas is dedicated.
- * The east half of section 36 is dedicated to the Fruitland Coal.

Date: 8-10-01

Drilling Engineer: E. J. Diles