

UNITED STATES
DEPARTMENT OF THE INTERIOR
BUREAU OF LAND MANAGEMENT

APPLICATION FOR PERMIT TO DRILL, DEEPEN, OR PLUG BACK

1a. Type of Work DRILL	2001 SEP 21 10:00 AM	5. Lease Number SF-078356A Unit Reporting Number
1b. Type of Well GAS		6. If Indian, All. or Tribe
2. Operator BURLINGTON RESOURCES Oil & Gas Company		7. Unit Agreement Name Huerfanito Unit
3. Address & Phone No. of Operator PO Box 4289, Farmington, NM 87499 (505) 326-9700		8. Farm or Lease Name Huerfanito Unit 9. Well Number #94R
4. Location of Well 970' FNL, 1660' FEL Latitude 36° 33.0, Longitude 107° 45.2		10. Field, Pool, Wildcat Blanco Pict'd Cliffs South 11. Sec., Twn, Rge, Mer. (NMPM) B Sec. 26, T-27-N, R-9-W API # 30-045-30845
14. Distance in Miles from Nearest Town 16 miles from Blanco	12. County San Juan	13. State NM
15. Distance from Proposed Location to Nearest Property or Lease Line 970'		
16. Acres in Lease	17. Acres Assigned to Well 160 NE/4	
18. Distance from Proposed Location to Nearest Well, Drlg, Compl, or Applied for on this Lease 1000'		
19. Proposed Depth 2323'	20. Rotary or Cable Tools Rotary	
21. Elevations (DF, FT, GR, Etc.) 6198' GR	22. Approx. Date Work will Start	
23. Proposed Casing and Cementing Program See Operations Plan attached		
24. Authorized by: <u><i>Regan Cole</i></u> Regulatory/Compliance Supervisor	Date <u>9-17-01</u>	

PERMIT NO.

APPROVAL DATE

11/14/01

APPROVED BY

TITLE

AFM

DATE

11/14/01

Archaeological Report to be submitted

Threatened and Endangered Species Report to be submitted

NOTE: This format is issued in lieu of U.S. BLM Form 3160-3

Title 18 U.S.C. Section 1001, makes it a crime for any person knowingly and willfully to make to any department or agency of the United States any false, fictitious or fraudulent statements or presentations as to any matter within its jurisdiction.

For information on technical and
regulatory requirements see 43 CFR 3105.3
and 43 CFR 3165.4.

District I
PO Box 1980, Hobbs, NM 88241-1980

District II
PO Drawer DD, Artesia, NM 88211-0719

District III
1000 Rio Brazos Rd., Aztec NM 87410

District IV
PO Box 2088, Santa Fe, NM 87504-2088

State of New Mexico
Energy, Minerals & Natural Resources Department

OIL CONSERVATION DIVISION
PO Box 2088
Santa Fe, NM 87504-2088

Form C-102
Revised February 21, 1994
Instructions on back
Submit to Appropriate District Office
State Lease - 4 Copies
Fee Lease - 3 Copies

☐ AMENDED REPORT

WELL LOCATION AND ACREAGE DEDICATION PLAT

*API Number 30-045-30845		*Pool Code 72439	*Pool Name Blanco Pictured Cliffs South
*Property Code 7138	*Property Name HUERFANITO UNIT		*Well Number 94R
*GRID No. 14538	*Operator Name BURLINGTON RESOURCES OIL & GAS COMPANY LP		*Elevation 6198'

¹⁰ Surface Location

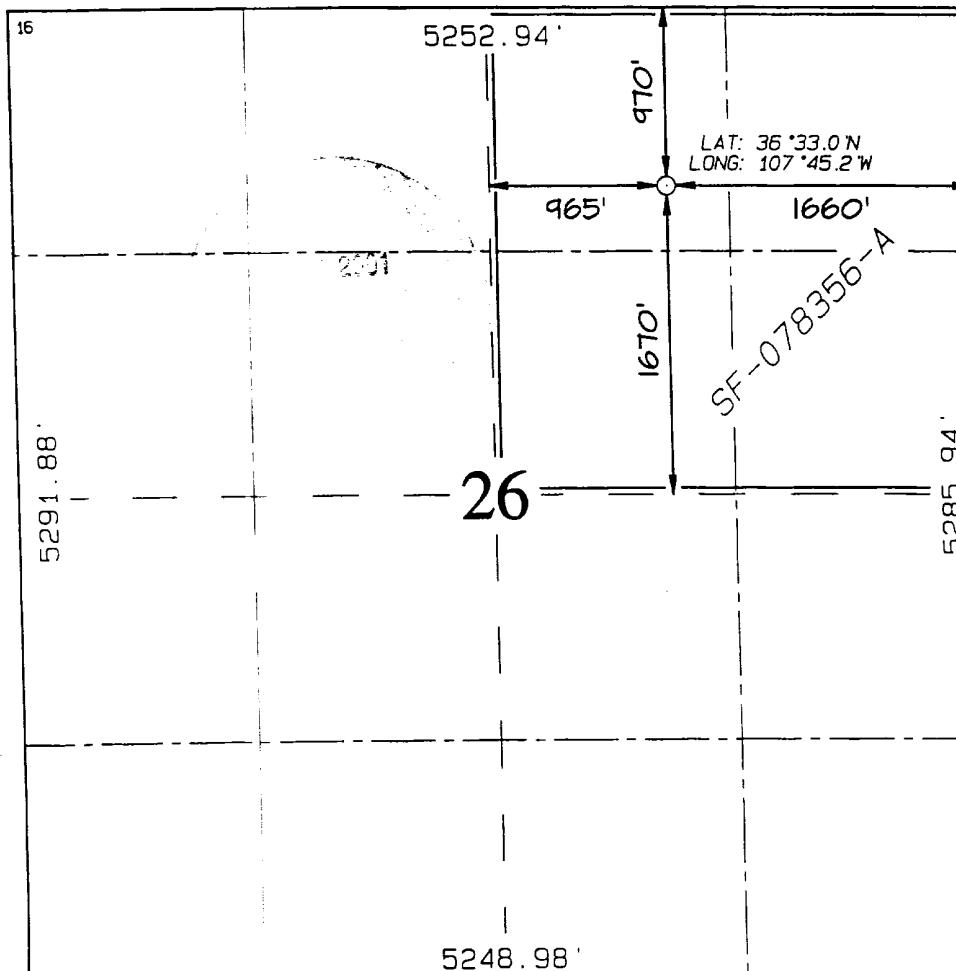
UL or lot no.	Section	Township	Range	Lot Idn	Feet from the	North/South line	Feet from the	East/West line	County
B	26	27N	9W		970	NORTH	1660	EAST	SAN JUAN

¹¹ Bottom Hole Location If Different From Surface

UL or lot no.	Section	Township	Range	Lot Idn	Feet from the	North/South line	Feet from the	East/West line	County

¹² Dedicated Acres 160 NE/4	¹³ Joint or Infill	¹⁴ Consolidation Code	¹⁵ Order No.
---	-------------------------------	----------------------------------	-------------------------

NO ALLOWABLE WILL BE ASSIGNED TO THIS COMPLETION UNTIL ALL INTERESTS HAVE BEEN CONSOLIDATED OR A NON-STANDARD UNIT HAS BEEN APPROVED BY THE DIVISION



¹⁷ OPERATOR CERTIFICATION

I hereby certify that the information contained herein is true and complete to the best of my knowledge and belief.

Peggy Cole
Signature

Peggy Cole
Printed Name

Regulatory Supervisor
Title

9-14-01
Date

¹⁸ SURVEYOR CERTIFICATION

I hereby certify that the well location shown on this plat was plotted from field notes of actual surveys made by me or under my supervision, and that the same is true and correct to the best of my belief.

JULY 14, 2001

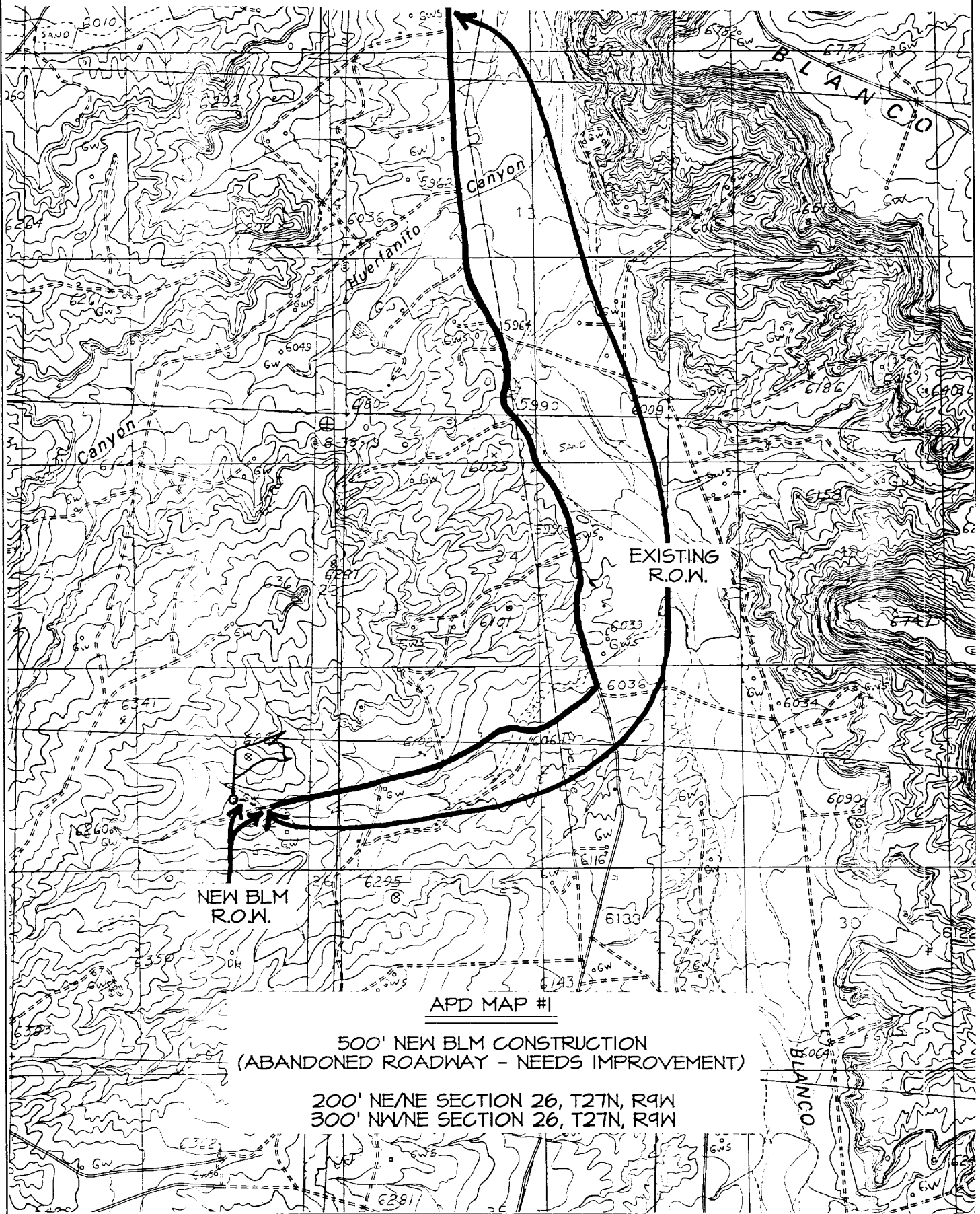
Date of Survey

Signature and Seal of Professional Surveyor

NEALE C. EDWARDS
NEW MEXICO
6857
Professional Surveyor
Certificate Number 6857

BURLINGTON RESOURCES OIL & GAS COMPANY HUERFANITO UNIT #94R

970' FNL & 1660' FEL, SECTION 26, T27N, R9W, N.M.P.M.
SAN JUAN COUNTY, NEW MEXICO



OPERATIONS PLAN

Well Name: Huerfanito Unit #94R
Location: 970' FNL, 1660' FEL, Section 26, T-27-N, R-9-W
San Juan County, New Mexico
Latitude 36° 33.0', Longitude 107° 45.2'
Formation: Blanco Pictured Cliffs South
Elevation: 6198' GR

Formation:	Top	Bottom	Contents
Surface	San Jose	1235'	
Ojo Alamo	1235'	1364'	aquifer
Kirtland	1364'	1737'	gas
Fruitland	1737'	2123'	gas
Pictured Cliffs	2123'		gas
Total Depth	2323'		

Logging Program: cased hole - CBL/GR/CCL TD to surface

Coring Program: None

Mud Program:

<u>Interval</u>	<u>Type</u>	<u>Weight</u>	<u>Vis.</u>	<u>Fluid Loss</u>
0- 120'	Spud	8.4-9.0	40-50	no control
120-2323'	FW	8.4-9.0	32-45	no control

Casing Program (as listed, equivalent, or better):

<u>Hole Size</u>	<u>Depth Interval</u>	<u>Csg. Size</u>	<u>Wt.</u>	<u>Grade</u>
9 7/8"	0 - 120'	7"	20#	J-55
6 1/4"	0 - 2323'	2 7/8"	6.5#	J-55

Float Equipment: 7" surface casing - saw tooth guide shoe.
Centralizers will be run in accordance with Onshore Order #2.

2 7/8" production casing - float shoe on bottom. Three centralizers run every other joint above shoe. Seven centralizers run every 3rd joint to the base of the Ojo Alamo @ 1364'. Two turbolizing type centralizers - one below and one into the base of the Ojo Alamo @ 1364'. Standard centralizers thereafter every fourth joint up to the base of the surface pipe.

Wellhead Equipment: 7" x 2 7/8" 2000 psi screw on independent wellhead.

Cementing:

7" surface casing - cement with 27 sx Class A, B Portland Type I, II cement (32 cu.ft. of slurry, bring cement to surface through 3/4" line). WOC 8 hrs. Test casing to 600 psi for 30 minutes.

2 7/8" production casing - Lead w/308 sx Premium Lite cement w/3% calcium chloride, 1/4 pps flocele, 5 pps LCM-1, 0.4% FL-52, and 0.4% SMS. Tail w/90 sx Type III cement w/1% calcium chloride, 1/4 pps flocele, and 0.2% FL-52 (781 cu.ft. of slurry, 100% excess to circulate to surface).

Note: If open hole logs are run, cement volumes will be based on 25% excess over caliper volumes.

BOP and tests:

Surface to TD - 11" 2000 psi (minimum double gate BOP stack (Reference Figure #1). Prior to drilling out surface casing, test rams to 600 psi/30 min.

Completion - 7 1/16" 2000 psi (minimum) double gate BOP stack (Reference Figure #2). Prior to completion operations, test rams and casing to 2000 psi/15 min.

From surface to TD - choke manifold (Reference Figure #3).

Pipe rams will be actuated to least once each day and blind rams actuated once each trip to test proper functioning. An upper kelly cock valve with handle and drill string safety valves to fit each drill string will be maintained and available on the rig floor.

BOP and tests (If a coiled tubing drilling (CTD) rig is utilized.):

Surface to TD: 7-1/16" 2000 psi (minimum) Torus annular BOP stack (Reference Figure #1b). Prior to drilling out surface casing, test annular BOP to 600psi/30 min.

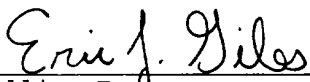
Completion: 7-1/16" 2000 psi (minimum) double gate BOP stack (Reference Figure #2). Prior to completion operations, test blind rams and casing to 1500 psi for 30 minutes; all pipe rams and casing to 1500 psi for 30 minutes each. **Same as in original APD operations plan.**

From surface to TD: choke manifold (Reference Figure #3). **Same as in original APD operations plan.**

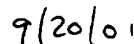
The annular BOP will be actuated to close on drill pipe (coiled tubing) at least once each day and to close on open hole once each trip to test proper functioning.

Additional information:

- * The Pictured Cliffs formation will be completed.
- * Anticipated pore pressure for the Pictured Cliffs is 500 psi.
- * This gas is dedicated.
- * The northeast quarter of Section 26 is dedicated to the Pictured Cliffs.



Drilling Engineer



Date