

UNITED STATES
DEPARTMENT OF THE INTERIOR
GEOLOGICAL SURVEY

APPLICATION FOR PERMIT TO DRILL, DEEPEN, OR PLUG BACK

1a. TYPE OF WORK

DRILL ☒DEEPEN ☐PLUG BACK ☐

b. TYPE OF WELL

OIL
WELL ☐GAS
WELL ☒

OTHER

SINGLE
ZONE ☒MULTIPLE
ZONE ☐

2. NAME OF OPERATOR

Petroleum Corporation of Texas Att: Mr. Fred Dueser

3. ADDRESS OF OPERATOR

P.O. Box 911 Breckenridge, Texas 76024

4. LOCATION OF WELL (Report location clearly and in accordance with any State requirements.)*

At surface

790' FSL, 790' FEL

At proposed prod. zone

14. DISTANCE IN MILES AND DIRECTION FROM NEAREST TOWN OR POST OFFICE*

SAME

15. DISTANCE FROM PROPOSED*

LOCATION TO NEAREST
PROPERTY OR LEASE LINE, FT.
(Also to nearest drlg. unit line, if any)

790'

16. NO. OF ACRES IN LEASE

18. DISTANCE FROM PROPOSED LOCATION*

TO NEAREST WELL, DRILLING, COMPLETED,
OR APPLIED FOR, ON THIS LEASE, FT.

700'

19. PROPOSED DEPTH

2200

17. NO. OF ACRES ASSIGNED
TO THIS WELL

127.74

20. ROTARY OR CABLE TOOLS

Rotary

21. ELEVATIONS (Show whether DF, RT, GR, etc.)

5789' G.L.

23.

PROPOSED CASING AND CEMENTING PROGRAM

SIZE OF HOLE	SIZE OF CASING	WEIGHT PER FOOT	SETTING DEPTH	QUANTITY OF CEMENT
12 1/4	8 5/8	24.0	100'	100 sxs
7 7/8	4 1/2	10.50	2200	To be determined

It is proposed to drill this well with rotary tools using drilling mud as a circulating medium through the Pictured Cliffs formation. All possible producing intervals in the Pictured Cliffs will be completed.

Estimated Formation Tops.

Kirtland-1040' Fruitland-1230' Pictured Cliffs-1930'

The E/2 of Section 8 is dedicated to this well. 127.74 acres.
The natural gas from this well is committed.

IN ABOVE SPACE DESCRIBE PROPOSED PROGRAM: If proposal is to deepen or plug back, give data on present productive zone and proposed new productive zone. If proposal is to drill or deepen directionally, give pertinent data on subsurface locations and measured and true vertical depths. Give blowout preventer program, if any.

24. FOR: Petroleum Corporation of Texas

SIGNED

Ewell N. Walsh

TITLE

President Walsh Engin.
and Production Corp.

DATE

January 10, 1978

(This space for Federal or State office use)

PERMIT NO.

APPROVAL DATE

APPROVED BY

TITLE

DATE

CONDITIONS OF APPROVAL, IF ANY:

RECEIVED

JAN 11 1978

*See Instructions On Reverse Side

U.S. Geological Survey,
Farmingington, N.M.

NWU-158

**NEW MEXICO OIL CONSERVATION COMMISSION
WELL LOCATION AND ACREAGE DEDICATION PLAT**

Form C-102
Supersedes C-128
Effective 1-4-65

All distances must be from the outer boundaries of the Section.

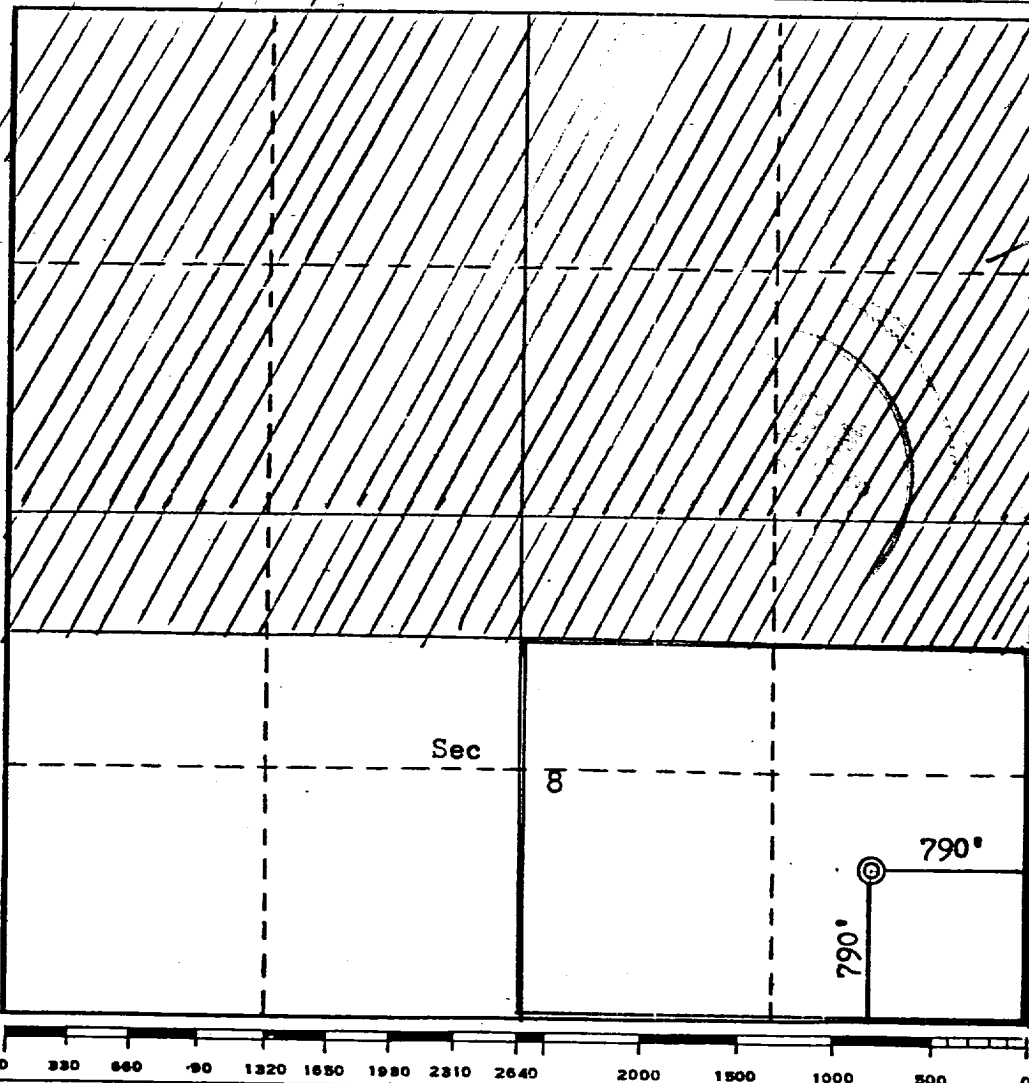
Operator Petroleum Corporation of Texas			Lease Day J		Well No. 3R
Unit Letter P	Section 8	Township 28N	Range 10W	County San Juan	
Actual Footage Location of Well:					
790 feet from the South line and		790 feet from the East line			
Ground Level Elev. 5789	Producing Formation pictured cliffs	Pool Fulcher Kutz P.C. ✓	Dedicated Acreage: 127.74 ✓ Acres		

1. Outline the acreage dedicated to the subject well by colored pencil or hachure marks on the plat below.
2. If more than one lease is dedicated to the well, outline each and identify the ownership thereof (both as to working interest and royalty).
3. If more than one lease of different ownership is dedicated to the well, have the interests of all owners been consolidated by communitization, unitization, force-pooling, etc?

☐ Yes ☐ No If answer is "yes," type of consolidation _____

If answer is "no," list the owners and tract descriptions which have actually been consolidated. (Use reverse side of this form if necessary.) _____

No allowable will be assigned to the well until all interests have been consolidated (by communitization, unitization, forced-pooling, or otherwise) or until a non-standard unit, eliminating such interests, has been approved by the Commission.



CERTIFICATION

I hereby certify that the information contained herein is true and complete to the best of my knowledge and belief.
For: **Petroleum Corporation of Texas**

Name **Ewell N. Walsh, P.E.**
Position **President**

Walsh Engineering & Prod.
Company **Corp.**

January 10, 1978
Date

I hereby certify that the well location shown on this plat was plotted from field notes of actual surveys made by me or under my supervision, and that the same is true and correct to the best of my knowledge and belief.

Date Surveyed **October 20, 1977**

Registered Professional Engineer and/or Land Surveyor

Fred B. Kerr

Certificate No. **3950**

DEVELOPMENT PLAN

Petroleum Corporation of Texas
Day "J", No. 3-R
790'FSL, 790'FEL, Section 8-T28N-R10W
San Juan County, New Mexico

1. Existing roads shown on attached plat.
2. Planned access from existing road is approximately 800' to new location.
3. Location - See Above
4. No additional well is planned on this lease at this time.
5. Production equipment or storage facilities proposed for the well will be installed on location.
6. Water will be obtained from the San Juan River in the NW/4 Section 27-T29N-R11W.
7. Waste materials will be buried on location or in reserve pit.
8. No permanent camp is planned. A trailer house will be used on location during drilling process.
9. No airstrip proposed.
10. See attached plat for layout.
11. Pits will be filled, location cleaned up, and area not in use for producing well will be reseeded using broadcast method of planting.

DEVELOPMENT PLAN

Page 2 of 2

12. Lessee's or operator's representative.

Ewell N. Walsh: 325-8203; Radio Dispatch 325-1873, Car 620.
Address: P. O. Box 254, Farmington, New Mexico 87401

13. CERTIFICATION:

I hereby certify that I, or persons under my direct supervision, have inspected the proposed drillsite and access route; that I am familiar with the conditions which presently exist; that the statements made in this plan are, to the best of my knowledge, true and correct; and, that the work associated with the operations proposed herein will be performed by: _____

Petroleum Corporation of Texas

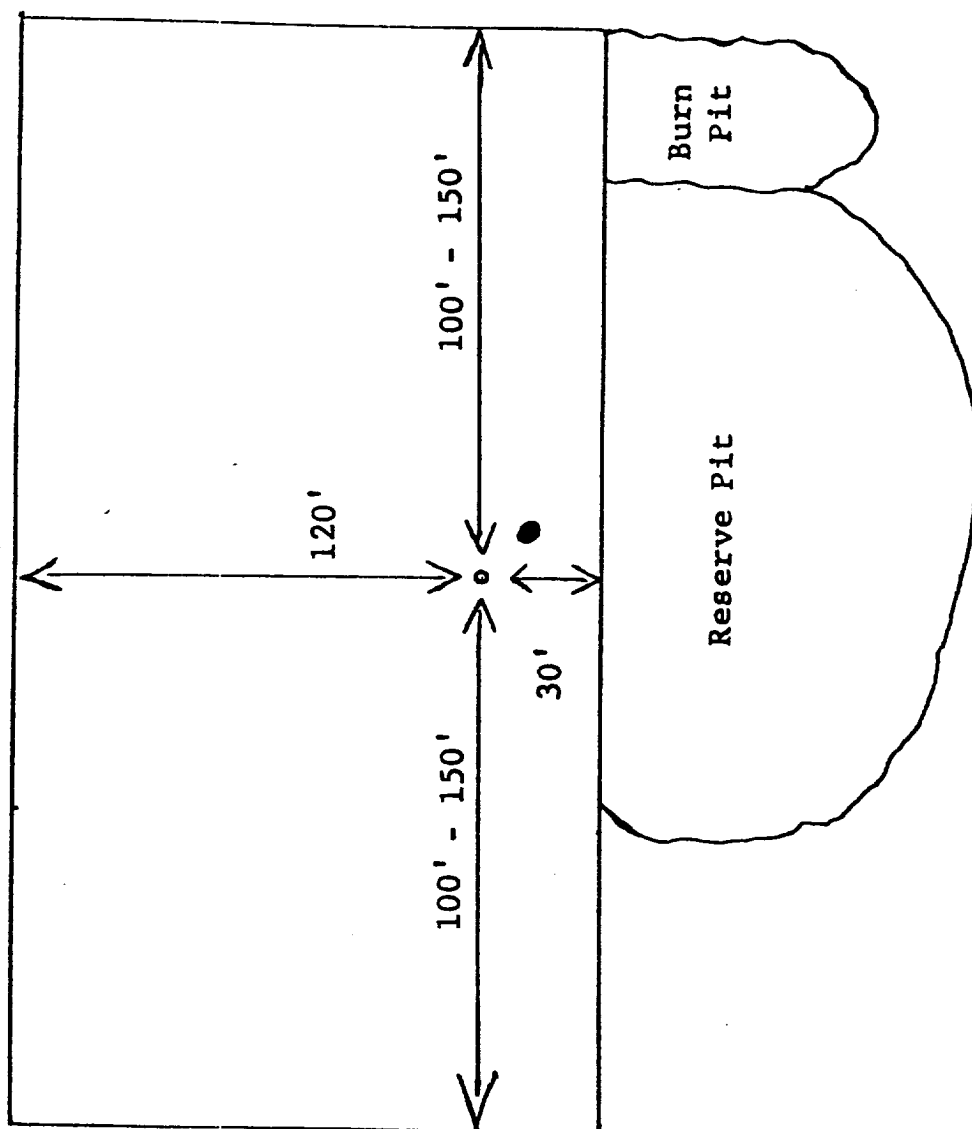
and its contractors and subcontractors in conformity with this plan and the terms and conditions under which it is approved.

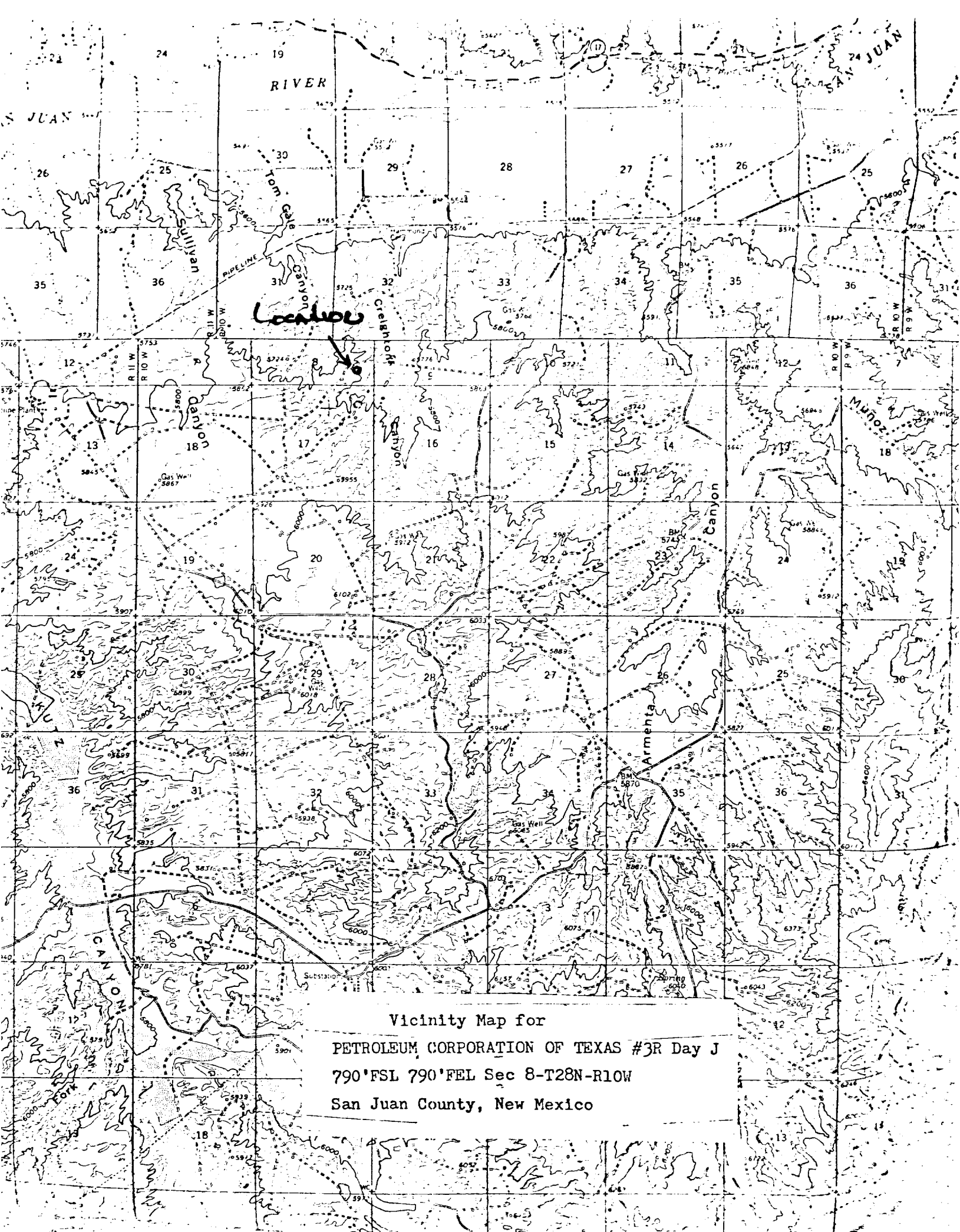


Ewell N. Walsh, P.E., President,
Walsh Engineering & Production
Corporation

PETROLEUM CORPORATION OF TEXAS

DAY "J" NO. 3-R





Vicinity Map for
PETROLEUM CORPORATION OF TEXAS #3R Day J
790'FSL 790'FEL Sec 8-T28N-R10W
San Juan County, New Mexico

Petroleum Corporation of Texas
Day "C" No. 3-R
790'FSL, 790'FEL, Sec, 8-T28N-R10W
San Juan County, New Mexico

Seven Point Well Control Program

1. Surface Casing.
See Application for Permit to Drill.
2. Spools and Flanges
 - A. Surface Casing - Scwd Series 600, 2000 psi W.P.
 - B. Production, Scwd Series 600, 2000 psi W.P.
 - C. Tubing Head - Series 600, 2000 psi W.P.
3. Intermediate Casing.
None
4. Blowout Preventers
Production Hole - 10" 2000 psi
Fill, kill and choke manifold - 5000 psi W.P.
5. Addition Equipment (If necessary)
 - A. Kelly Cock
 - B. Bit Float
 - C. Degasser
 - D. Pit Level Indicator
 - E. Sub with Valve for Drill Pipe.
6. Anticipated Bottom Hole Pressure.
900 psi. Current mud program is for 9.2 lb./gal mud with hydrostatic head of 1050 psi at 2200 feet. Mud weight will be increased if necessary for higher pressures.
7. Drilling Fluid.
water base gel and chemical