

**NEW MEXICO OIL CONSERVATION COMMISSION
WELL LOCATION AND ACREAGE DEDICATION PLAT**

Supersedes C-128
Effective 1-1-65

All distances must be from the outer boundaries of the Section.

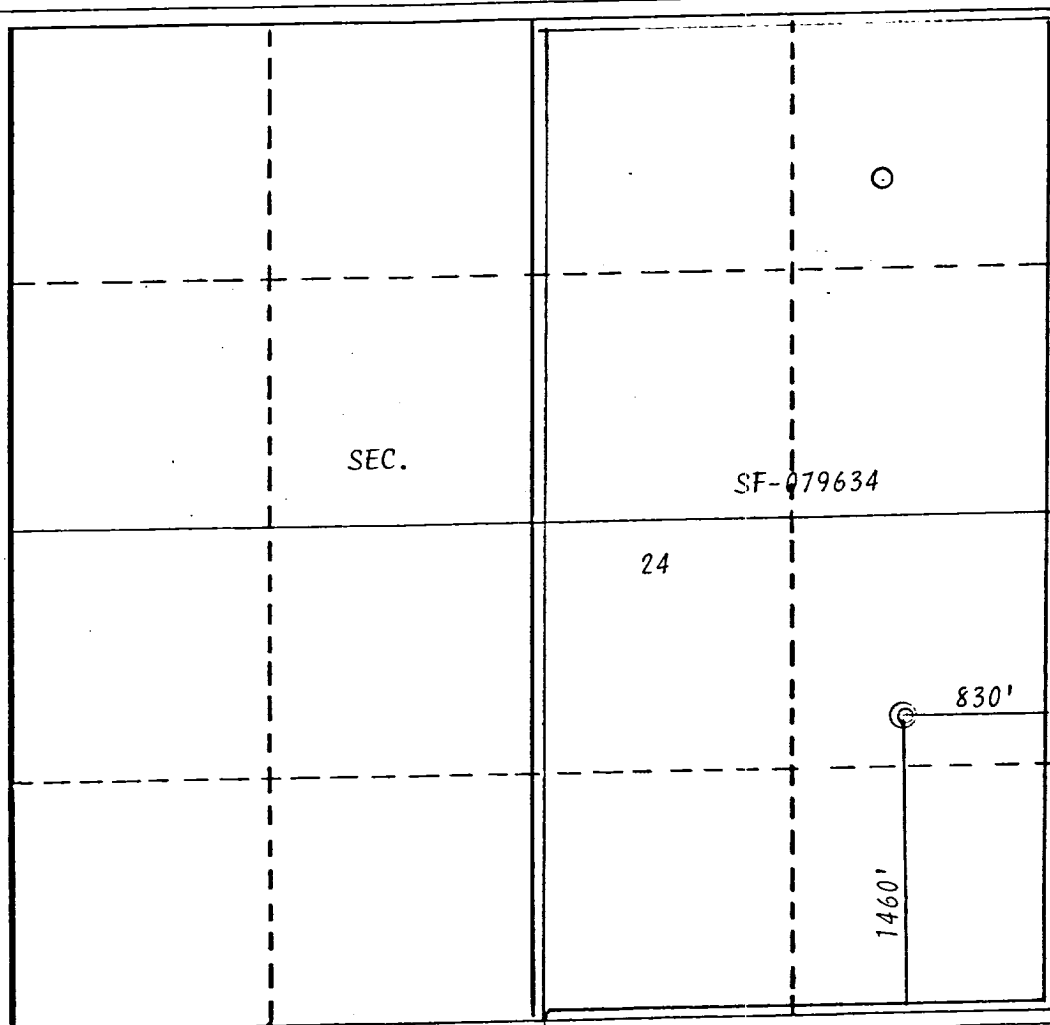
Operator Southland Royalty Company			Lease McClanahan		Well No. 17E
Unit Letter I	Section 24	Township 28N	Range 10W	County San Juan	
Actual Footage Location of Well: 1460' feet from the South line and 830' feet from the East line					
Ground Level Elev: 5883'	Producing Formation Dakota/Mesa Verde	Pool Basin Blanco Mesa Verde		Dedicated Acreage: 320 Acres	

1. Outline the acreage dedicated to the subject well by colored pencil or hatchure marks on the plat below.
2. If more than one lease is dedicated to the well, outline each and identify the ownership thereof (both as to working interest and royalty).
3. If more than one lease of different ownership is dedicated to the well, have the interests of all owners been consolidated by communitization, unitization, force-pooling, etc?

☐ Yes ☐ No If answer is "yes," type of consolidation _____

If answer is "no," list the owners and tract descriptions which have actually been consolidated. (Use reverse side of this form if necessary.) _____

No allowable will be assigned to the well until all interests have been consolidated (by communitization, unitization, forced-pooling, or otherwise) or until a non-standard unit, eliminating such interests, has been approved by the Commission.



CERTIFICATION

I hereby certify that the information contained herein is true and complete to the best of my knowledge and belief.

Curtis C. Parsons

Name
Curtis C. Parsons

Position
District Engineer

Company
Southland Royalty Company

Date
May 27, 1980

I hereby certify that the well location shown on this plat was plotted from field notes of actual surveys made by me or under my supervision, and that the same is true and correct to the best of my knowledge and belief.

Date Surveyed
August 2, 1979

Registered Professional Engineer
and/or Land Surveyor

Fred B. Kerr, Jr.

Certificate No.
3950

