

UNITED STATES
DEPARTMENT OF THE INTERIOR
GEOLOGICAL SURVEY

30-045-23927

APPLICATION FOR PERMIT TO DRILL, DEEPEN, OR PLUG BACK

1a. TYPE OF WORK
DRILL ☒ DEEPEN ☐ PLUG BACK ☐
b. TYPE OF WELL
OIL WELL ☐ GAS WELL ☒ OTHER ☐
SINGLE ZONE ☒ MULTIPLE ZONE ☐

2. NAME OF OPERATOR
Southland Royalty Company

3. ADDRESS OF OPERATOR
P. O. Drawer 570, Farmington, NM 87401

4. LOCATION OF WELL (Report location clearly and in accordance with any State requirements.)*
At surface
800' FNL & 1850' FWL
At proposed prod. zone

14. DISTANCE IN MILES AND DIRECTION FROM NEAREST TOWN OR POST OFFICE*
4 miles SE of Bloomfield, New Mexico

15. DISTANCE FROM PROPOSED* LOCATION TO NEAREST PROPERTY OR LEASE LINE, FT. (Also to nearest drlg. unit line, if any) 790'
18. DISTANCE FROM PROPOSED LOCATION* TO NEAREST WELL, DRILLING, COMPLETED, OR APPLIED FOR, ON THIS LEASE, FT. 1200'

21. ELEVATIONS (Show whether DF, RT, GR, etc.)
5900' GR

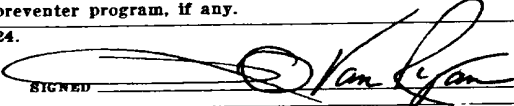
23. PROPOSED CASING AND CEMENTING PROGRAM

SIZE OF HOLE	SIZE OF CASING	WEIGHT PER FOOT	SETTING DEPTH	QUANTITY OF CEMENT
12 1/4"	8 5/8"	24#	200'	140 Sacks
7 7/8"	4 1/2"	10.5#	6550'	208 Sacks - First Stage
				272 Sacks - Second Stage
				206 Sacks - Third Stage

Surface formation is Nacimiento
Top of Ojo Alamo sand is at 1112'.
Top of Pictured Cliffs sand is at 1912'.
Fresh water mud will be used to drill from surface to total depth.
It is anticipated that a GR-Induction and a GR-Density log will be run from surface to total depth.
No abnormal pressures or poisonous gases are anticipated in this well.
It is expected that this well will be drilled before June 30, 1980. This depends on time required for approval, rig availability and the weather.
Gas is dedicated.

ADDITIONAL WELL NEEDED PURSUANT TO NEW MEXICO ORDER R-1670-V.
U.S.G.S. RATIFICATION DATED JUNE 8, 1979.

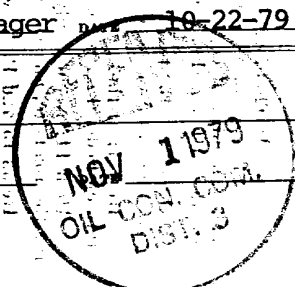
IN ABOVE SPACE DESCRIBE PROPOSED PROGRAM: If proposal is to deepen or plug back, give data on present productive zone and proposed new productive zone. If proposal is to drill or deepen directionally, give pertinent data on subsurface locations and measured and true vertical depths. Give blowout preventer program, if any.

24.  TITLE District Production Manager DATE 10-22-79
(This space for Federal or State office use)

PERMIT NO. _____ APPROVAL DATE _____

APPROVED BY _____ TITLE _____
CONDITIONS OF APPROVAL, IF ANY:

NWU-3-40 oh Enach NMOC



All distances must be from the outer boundaries of the Section.

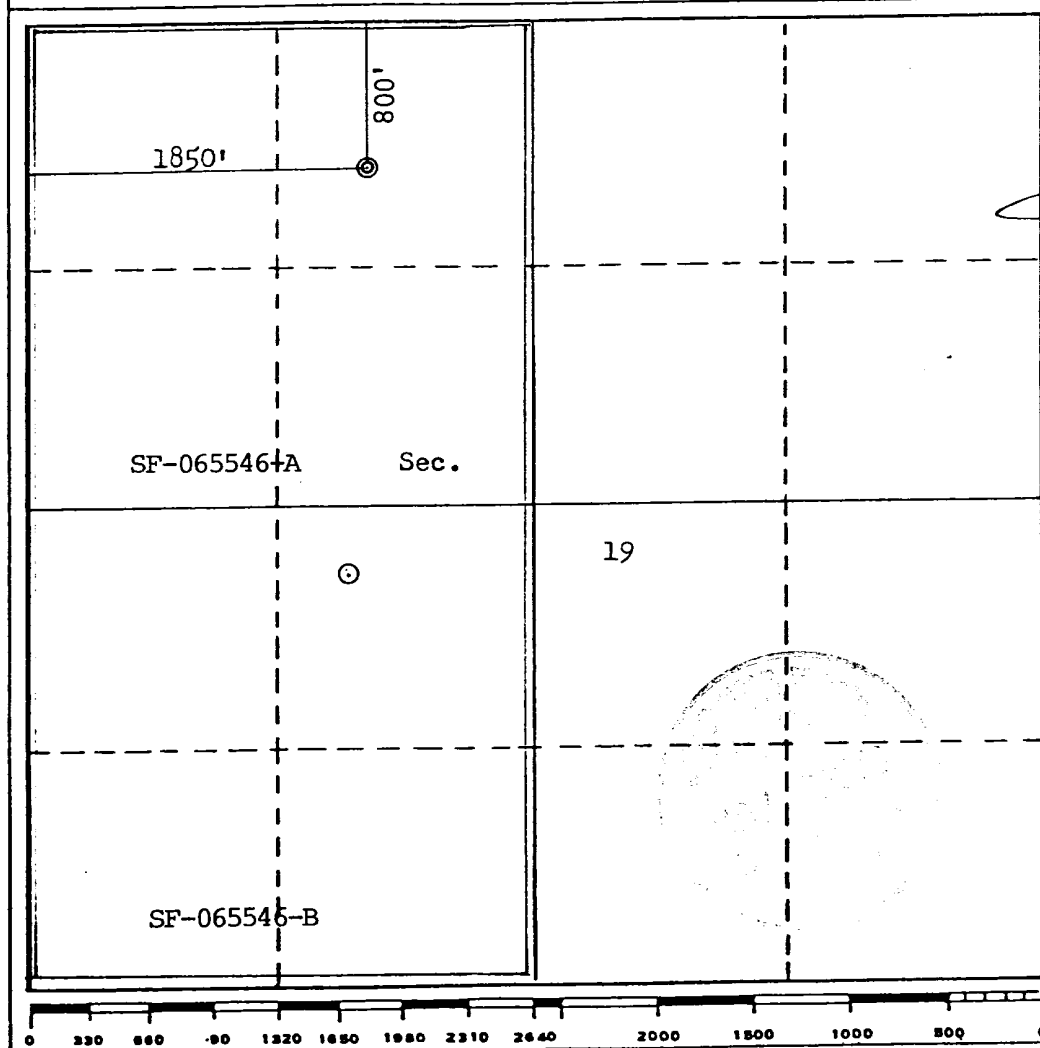
Operator SOUTHLAND ROYALTY COMPANY			Lease NEWMAN "B"		Well No. 6-E
Unit Letter C	Section 19	Township 28N	Range 10W	County San Juan	
Actual Footage Location of Well: 800 feet from the North line and 1850 feet from the West line					
Ground Level Elev. 5900	Producing Formation Dakota	Pool Basin	Dedicated Acreage: 320 Acres		

1. Outline the acreage dedicated to the subject well by colored pencil or hatchure marks on the plat below.
2. If more than one lease is dedicated to the well, outline each and identify the ownership thereof (both as to working interest and royalty).
3. If more than one lease of different ownership is dedicated to the well, have the interests of all owners been consolidated by communitization, unitization, force-pooling, etc?

☒ Yes ☐ No If answer is "yes," type of consolidation Communitization

If answer is "no," list the owners and tract descriptions which have actually been consolidated. (Use reverse side of this form if necessary.)

No allowable will be assigned to the well until all interests have been consolidated (by communitization, unitization, forced-pooling, or otherwise) or until a non-standard unit, eliminating such interests, has been approved by the Commission.



CERTIFICATION

I hereby certify that the information contained herein is true and complete to the best of my knowledge and belief.

Name
District Production Manager
Position
Southland Royalty Company
Company
October 22, 1979
Date

I hereby certify that the well location shown on this plat was plotted from field notes of actual surveys made by me or under my supervision, and that the same is true and correct to the best of my knowledge and belief.

Date Surveyed
October 22, 1979
Registered Professional Engineer and/or Land Surveyor
Fred B. Kerr, Jr.
Certificate No. 3950

SOUTHLAND ROYALTY COMPANY - DRILLING SCHEDULE

N E W M A N " B " # 6 E

800' FNL & 1850' FWL
Section 19, T28N, R10W
San Juan County, New Mexico

Field: Basin Dakota

Elevation: 5900' GR

<u>Formation Tops:</u>	Ojo Alamo	1112'	Point Lookout	4257'
	Fruitland	1682'	Gallup	5462'
	Pictured Cliffs	1912'	Graneros	6287'
	Cliff House	3462'	Dakota	6402'
			Total Depth	6550'

Logging Program: IES & GR-Density from surface to Total Depth.

Coring Program: None

Natural Gauges: None

Drilling:

Contractor:

Tool Pusher:

SRC Rep:

SRC Ans. Svc: 325-1841

SRC Dispatch: 325-7391

Mud Program: Fresh water to 3400'. Fresh water mud from 3400' to Total Depth. Maintain mud weight of 8.9 to 9.2.; Viscosity of 35 - 40 sec.; Water Loss of 10 - 12 cc. Pretreat with 10% LCM before drilling into Gallup at 5450'.

Materials:

<u>Casing Program:</u>	<u>Hole Size</u>	<u>Depth</u>	<u>Casing Size</u>	<u>Wt. & Grade</u>
	12 1/4"	200'	8 5/8"	24# H-40
	7 7/8"	6550'	4 1/2"	10.5# K-55

Float Equipment:

8 5/8" Surface Casing: Pathfinder guide shoe.

4 1/2" Production Casing: Pathfinder type "A" guide shoe. Pathfinder self-fill flapper type float collar run 1 joint off bottom. 5 Pathfinder bow-type centralizers run every other joint above shoe. Dowell stage tools at 4650' and 2010' with 1 cement basket below and 5 Pathfinder centralizers above tools.

Wellhead Equipment:

8 5/8" x 10", 2000# bradenhead with 4 1/2" casing hanger.
10", 2000# x 6", 2000 psi tubing head and tree.

8 5/8" Surface Casing: 140 sacks (165 cu. ft.) of class "B" with 1/4# gel flake per sack and 3% CaCl_2 . WOC for 12 hours. Test to 600# prior to drilling out. (Volume is 100% excess.)

4 1/2" Production Casing: STAGE 1 - 208 sacks (310 cu. ft.) of 50/50 Poz with 6% gel, 1/4# gel flake per sack followed by 50 sacks of neat with 2% CaCl_2 . (Volume is 25% excess to cover Gallup.)

STAGE 2 - 272 sacks (406 cu. ft.) of 50/50 Poz with 6% gel followed by 50 sacks of neat with 2% CaCl_2 . (Volume is 50% excess to cover Cliff House.)

STAGE 3 - 206 sacks (307 cu. ft.) of 50/50 Poz with 6% gel. (If PC will be produced in this well, add 35 sacks of neat with 2% CaCl_2 . (Volume is 50% excess to cover Ojo Alamo.)

L. O. Van Ryan
District Production Manager

OCP/ke



Southland Royalty Company

United States Geological Survey
P. O. Box 959
Farmington, New Mexico 87401

Attention: District Engineer

Dear Sir:

I hereby certify that I, or persons under my direct supervision, have inspected the proposed drillsite and access route; that I am familiar with the conditions which presently exist; that the statements made in this plan are, to the best of my knowledge, true and correct; and, that the work associated with the operations proposed herein be performed by Southland Royalty Company and its contractors and subcontractors in conformity with this plan and the terms and conditions under which it is approved.

Date: October 22, 1979

Name: 

Title: District Production Manager



Southland Royalty Company

October 22, 1979

United States Geological Survey
P. O. Box 959
Farmington, New Mexico

Attention: District Engineer

Dear Sir:

Enclosed please find a map showing existing roads and planned access roads to Southland Royalty Company's Newman "B" #6E well. The locations of tank batteries and flow lines will be on location with well. A burn pit will be provided for disposal of trash. Cuttings, drilling fluid and produced fluids will be put into the reserve pit and properly disposed of depending on amount and type of fluids.

Contractor will furnish restroom facilities on location.

There will be no air strips or camps.

Also, enclosed is a location layout showing approximate location of rig, pits and pipe racks and cut required to build this location.

Water supply will be San Juan River.

The location will be restored according to Bureau of Land Management standards. This work will begin when all related construction is finished.

Mr. Ross Lankford will be Southland Royalty Company's field representative supervising these operations.

Yours truly,

L. O. Van Ryan
District Production Manager

LOVR/dg



Southland Royalty Company

October 22, 1979

United States Geological Survey
P. O. Box 959
Farmington, New Mexico

Attention: District Engineer

Re: Blowout Preventer Plan

Dear Sir:

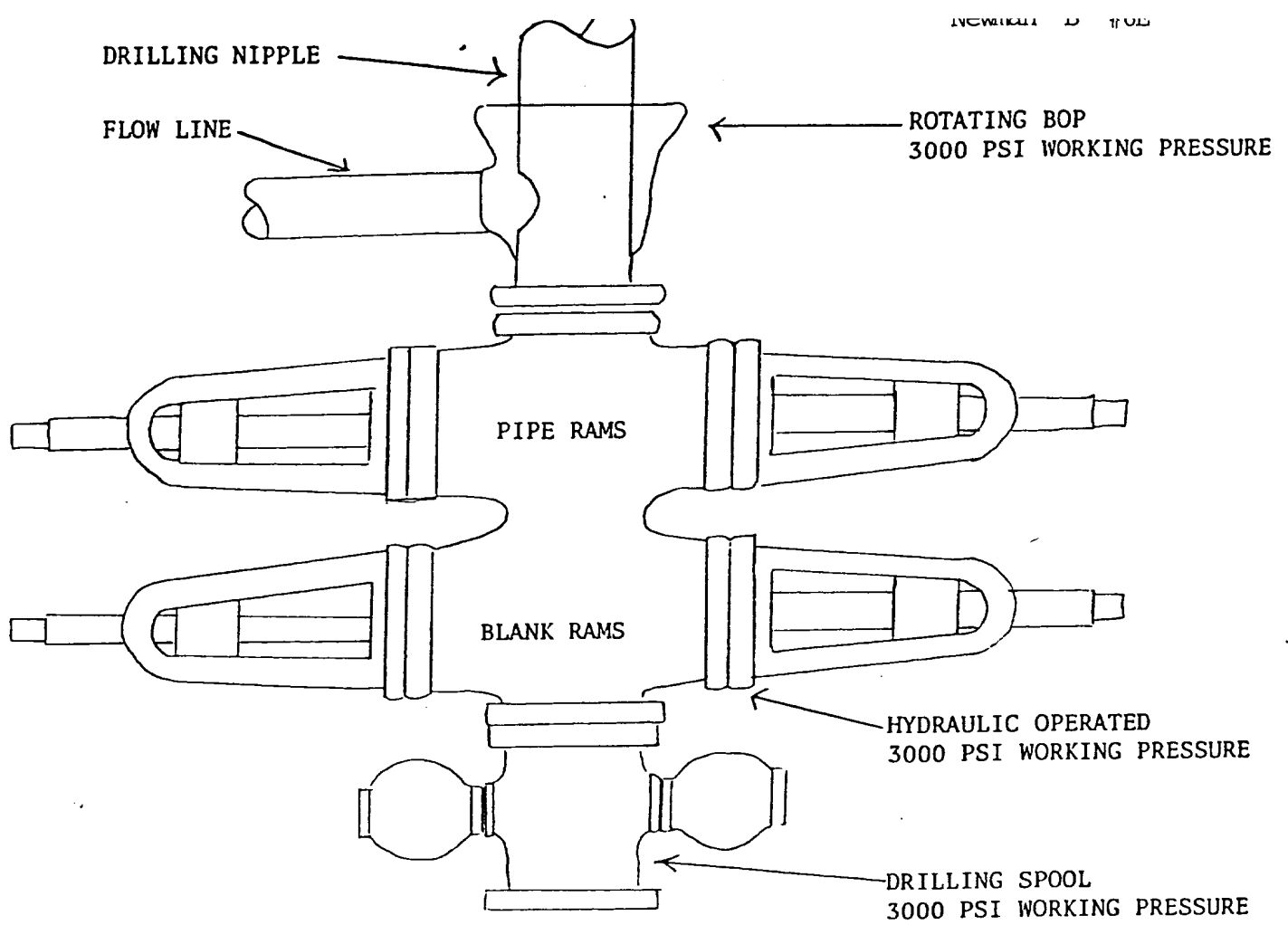
All drilling and completion rigs will be equipped with 6" or larger double hydraulic blowout preventers and a hydraulic closing unit with steel lines.

The preventer is 3000# working pressure and 6000# test.

All crews will be thoroughly trained in the operation of this preventer. The preventer will be tested frequently enough to insure proper operation.

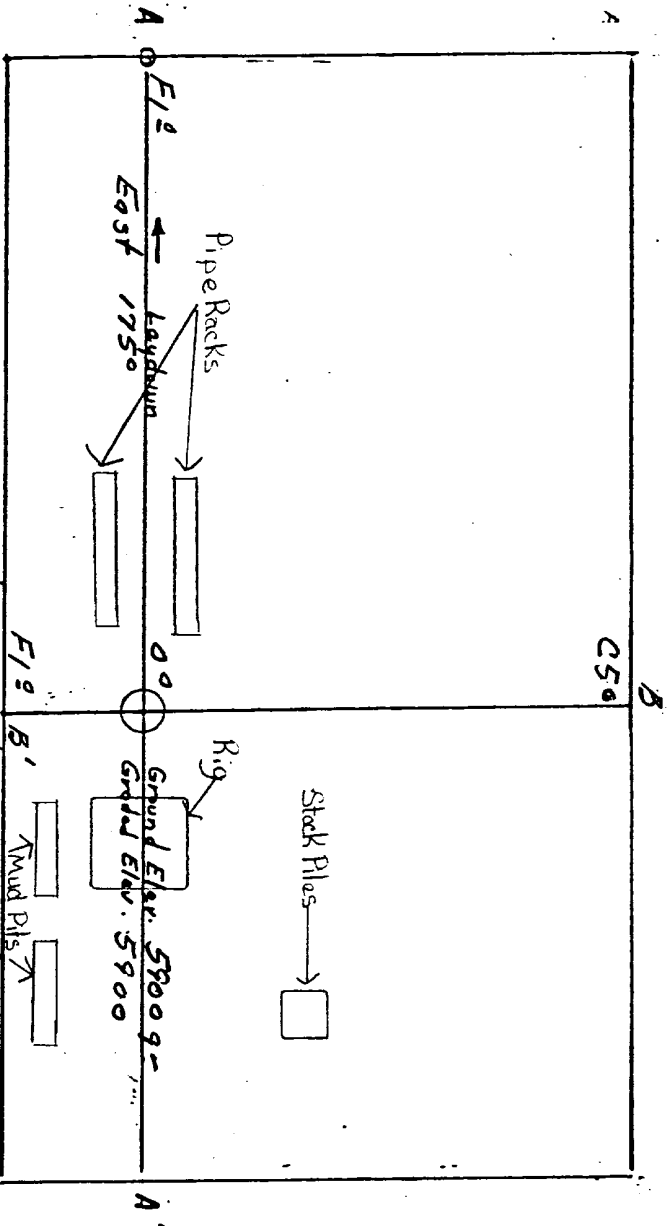
Yours truly,

L. O. Van Ryan
District Production Manager



PREVENTERS AND SPOOLS ARE TO HAVE
THROUGH BORE OF 6" - 3000 PSI OR LARGER

LOCATION PROFILE FOR
 SOUTHLAND ROYALTY CO. #6E NEWMAN "B"
 800' FNL 1850' FNL Sec 19-T28N-R10W
 SAN JUAN COUNTY, NEW MEXICO

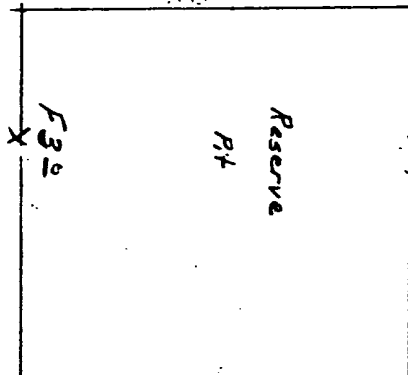


Vert. 1"=40' A-A' Horiz: 1"=100'

5910					
5900					
5890					

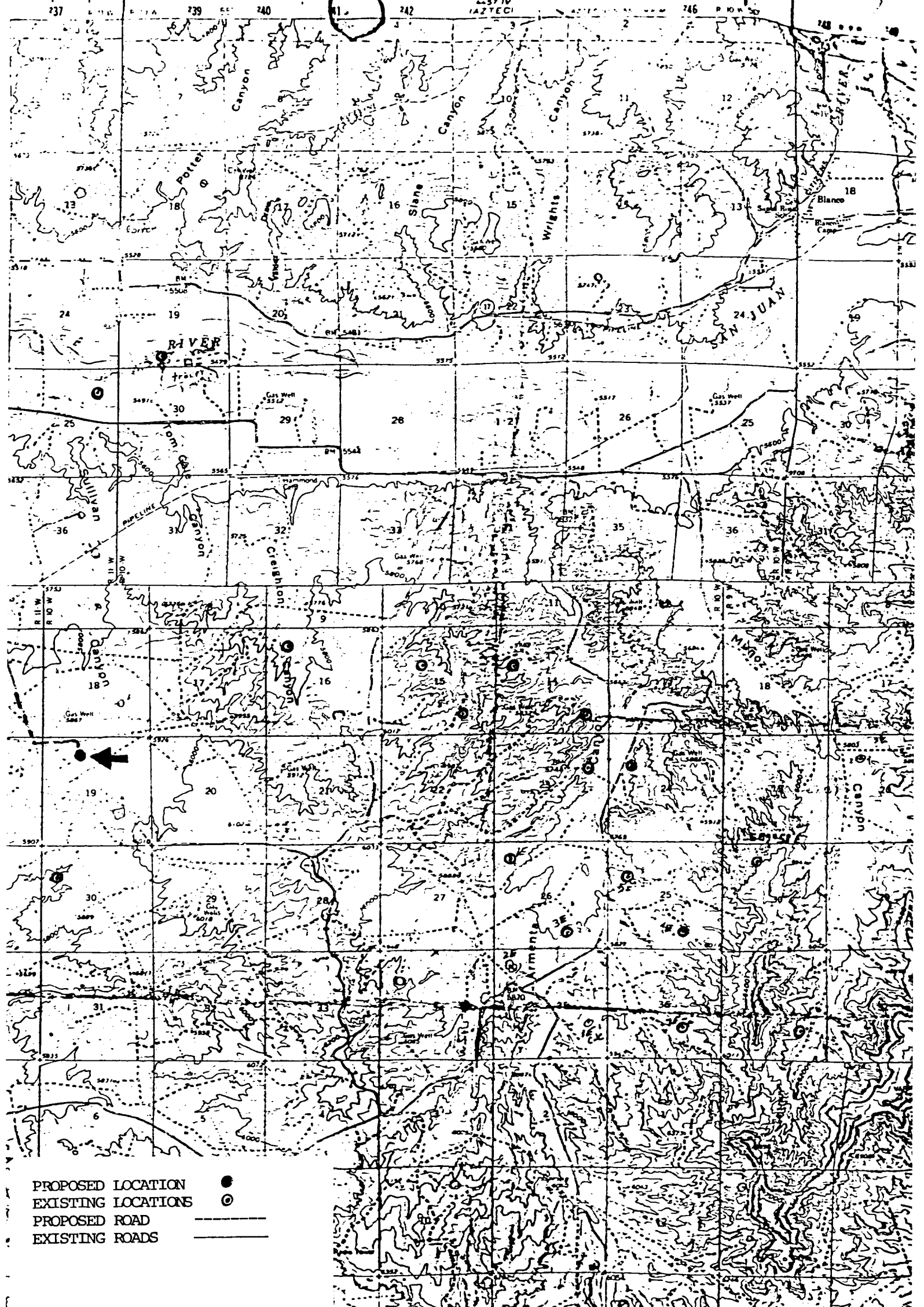
B-B'

5910					
5900					
5890					



Vert. 1"=40' C-C' Horiz: 1"=100'

D-D'



Vicinity Map for
SOUTHLAND ROYALTY CO. #6-E NEWMAN "B"
800'FWL 1850'FWL Sec 17-T28N-R16W
SAN JUAN COUNTY, NEW MEXICO