

UNITED STATES
DEPARTMENT OF THE INTERIOR
GEOLOGICAL SURVEY30-045-23928
5. LEASE DESIGNATION AND SERIAL NO.

SF-077084

6. IF INDIAN, ALLOTTEE OR TRIBE NAME

7. UNIT AGREEMENT NAME

8. FARM OR LEASE NAME

Hubbell "A"

9. WELL NO.

#1E

10. FIELD AND POOL, OR WILDCAT

Basin Dakota

11. SEC., T., R., M., OR BLK.
AND SURVEY OR AREA

Section 29, T28N, R10W

12. COUNTY OR PARISH

San Juan

13. STATE

New Mexico

1a. TYPE OF WORK

DRILL ☒DEEPEN ☐PLUG BACK ☐

b. TYPE OF WELL

OIL
WELL ☐GAS
WELL ☒

OTHER

SINGLE
ZONE ☒MULTIPLE
ZONE ☐

2. NAME OF OPERATOR

Southland Royalty Company

3. ADDRESS OF OPERATOR

P. O. Drawer 570, Farmington, NM 87401

4. LOCATION OF WELL (Report location clearly and in accordance with any State requirements.*)

At surface

1820' FNL & 1850' FWL

At proposed prod. zone

14. DISTANCE IN MILES AND DIRECTION FROM NEAREST TOWN OR POST OFFICE*

5 miles SE of Bloomfield

15. DISTANCE FROM PROPOSED*

LOCATION TO NEAREST
PROPERTY OR LEASE LINE, FT.
(Also to nearest drlg. unit line, if any)

530'

16. NO. OF ACRES IN LEASE

200

17. NO. OF ACRES ASSIGNED
TO THIS WELL

N/320

18. DISTANCE FROM PROPOSED LOCATION*

TO NEAREST WELL, DRILLING, COMPLETED,
OR APPLIED FOR, ON THIS LEASE, FT.

600'

19. PROPOSED DEPTH

6713'

20. ROTARY OR CABLE TOOLS

Rotary

21. ELEVATIONS (Show whether DF, RT, GR, etc.)

6069'

22. APPROX. DATE WORK WILL START*

November 30, 1979

23. PROPOSED CASING AND CEMENTING PROGRAM

SIZE OF HOLE	SIZE OF CASING	WEIGHT PER FOOT	SETTING DEPTH	QUANTITY OF CEMENT
12 1/4"	8 5/8"	24#	200'	140 sacks
7 7/8"	4 1/2"	10.5#	6500'	212 sacks (Stage One)
7 7/8"	4 1/2"	11.6#	6500'-6713'	757 sacks (Stage Two)

Surface formation is Nacimiento.

Top of Ojo Alamo sand is at 1401'.

Top of Pictured Cliffs sand is at 2071'.

Fresh water mud will be used to drill from surface to total depth.

It is anticipated that a GR-Density and a GR-Induction log will be run at total depth.

No abnormal pressures or poisonous gases are anticipated in this well.

It is expected that this well will be drilled before January 1, 1980. This depends on time required for approval, rig availability and the weather.

Gas is dedicated.

ADDITIONAL WELL NEEDED FOR DATA TO NEW MEXICO ORDER R-1670-V.
U.S.G.S. RATIFICATION DATED JUNE 8, 1979.

IN ABOVE SPACE DESCRIBE PROPOSED PROGRAM: If proposal is to deepen or plug back, give data on present productive zone and proposed new productive zone. If proposal is to drill or deepen directionally, give pertinent data on subsurface locations and measured and true vertical depths. Give blowout preventer program, if any.

24.

SIGNED

TITLE District Production Manager DATE 10-16-79

(This space for Federal or State office use)

PERMIT NO.

APPROVAL DATE

APPROVED BY

TITLE

DATE

CONDITIONS OF APPROVAL, IF ANY:

ok Frank

RM000

OIL CONSERVATION DIVISION

STATE OF NEW MEXICO
ENERGY AND MINERALS DEPARTMENTP. O. BOX 2088
SANTA FE, NEW MEXICO 87501Form C-107
Revised 10-1-78

All distances must be from the outer boundaries of the Section.

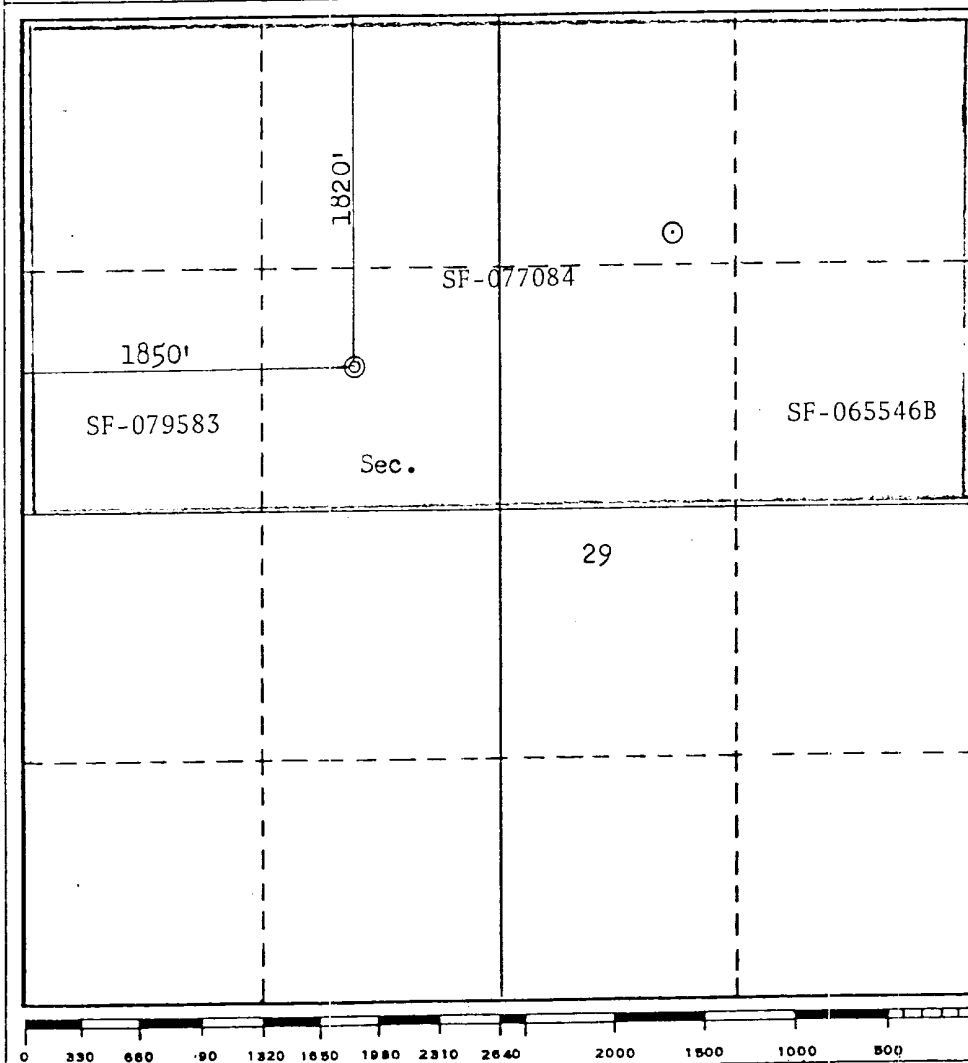
Operator SOUTHLAND ROYALTY COMPANY			Lease HUBBELL "A"		Well No. 1-E
Unit Letter F	Section 29	Township 28N	Range 10W	County San Juan	
Actual Footage Location of Well: 1820 feet from the North line and 1850 feet from the West line					
Ground Level Elev. 6069	Producing Formation Dakota		Pool Basin Dakota	Dedicated Acreage: 320 Acres	

1. Outline the acreage dedicated to the subject well by colored pencil or hachure marks on the plat below.
2. If more than one lease is dedicated to the well, outline each and identify the ownership thereof (both as to working interest and royalty).
3. If more than one lease of different ownership is dedicated to the well, have the interests of all owners been consolidated by communitization, unitization, force-pooling, etc?

☒ Yes ☐ No If answer is "yes," type of consolidation Communitization

If answer is "no," list the owners and tract descriptions which have actually been consolidated. (Use reverse side of this form if necessary.)

No allowable will be assigned to the well until all interests have been consolidated (by communitization, unitization, forced-pooling, or otherwise) or until a non-standard unit, eliminating such interests, has been approved by the Commission.



CERTIFICATION

I hereby certify that the information contained herein is true and complete to the best of my knowledge and belief.

Name
District Production Manager
Position
Southland Royalty Company
Company
October 16, 1979
Date

I hereby certify that the well location shown on this plat was plotted from field notes of actual surveys made by me or under my supervision, and that the same is true and correct to the best of my knowledge and belief.

Date Surveyed
September 28, 1979
Registered Professional Engineer
and/or Land Surveyor
Fred B. Kerr Jr.
Certificate No. 3950

SOUTHLAND ROYALTY COMPANY - DRILLING SCHEDULE

H U B B E L L " A " # 1 E

1820' FNL & 1850' FWL
Section 29, T28N, R10W
San Juan, New Mexico

Field: Basin Dakota Elevation: 6069' GR

<u>Formation Tops:</u>	Ojo Alamo	1401'	Point Lookout	4401'
	Fruitland	1781'	Gallup	5606'
	Pictured Cliffs	2071'	Graneros	6446'
	Cliff House	3646'	Dakota	6563'
			Total Depth	6713'

Logging Program: IES and GR Density from total depth to surface casing.

Coring Program: None

Natural Gauges: None

Drilling:

Contractor:

Tool Pusher:

SRC Rep:

SRC Ans. Svc: 325-1841

SRC Dispatch: 325-7391

Mud Program: Fresh water from surface to 5500'. Fresh water mud from 5500' to total depth. Maintain mud weight of 8.9 to 9.2. Pretreat mud with 10% ICM before 5600'. Maintain 35 - 40 sec. Vis, and 10 to 12 cc. water loss.

Casing Program:

<u>Hole Size</u>	<u>Depth</u>	<u>Casing Size</u>	<u>Wt. & Grade</u>
12 1/4"	200'	8 5/8"	24# H-40
7 7/8"	6500'	4 1/2"	10.5# K-55
7 7/8"	6500'-6713'	4 1/2"	11.6# K-55

Float Equipment:

8 5/8" Surface Casing - Pathfinder type "A" guide shoe.

4 1/2" Production Casing - Pathfinder type "A" guide shoe. Pathfinder self-fill flapper type float collar run 1 joint off bottom. 5 Pathfinder rigid stabilizers (run every other joint above shoe.) Dowell stage tool at 4700' + with one cement basket below and 5 Pathfinder centralizers above tool.

Wellhead Equipment - 8 5/8" X 10", 2000# bradenhead with 4 1/2" casing hanger.
10", 2000 X 6", 2000 psi tubinghead and tree.

Cementing Program:

8 5/8" Surface casing - 140 sacks (165 cu. ft.) of Class "B" with 1/4# gel flake per sack and 3% CaCl₂. WOC for 12 hours. Test to 600# prior to drilling out. (Volume is 100% excess)

4 1/2" Production Casing - STAGE ONE - 212 sacks (315 cu. ft.) of 50/50 Poz with 6% gel, 1/4# gel flake per sack and 0.6% Halad 9 or equivalent. (25% excess)

STAGE TWO - 757 sacks (1127 cu. ft.) of 50/50 Poz with 6% gel, 1/4# gel flake per sack and 0.6% Halad 9 or equivalent. (50% excess)

WOC and circulate between stages as required by well conditions.

L. O. Van Ryan
District Production Manager

BJM/ke



Southland Royalty Company

United States Geological Survey
P. O. Box 959
Farmington, New Mexico 87401

Attention: District Engineer

Dear Sir:

I hereby certify that I, or persons under my direct supervision, have inspected the proposed drillsite and access route; that I am familiar with the conditions which presently exist; that the statements made in this plan are, to the best of my knowledge, true and correct; and, that the work associated with the operations proposed herein be performed by Southland Royalty Company and its contractors and subcontractors in conformity with this plan and the terms and conditions under which it is approved.

Date: October 16, 1979

Name: 

Title: District Production Manager



Southland Royalty Company

October 16, 1979

United States Geological Survey
P. O. Box 959
Farmington, New Mexico

Attention: District Engineer

Dear Sir:

Enclosed please find a map showing existing roads and planned access roads to Southland Royalty Company's Hubbell "A" #1E well. The locations of tank batteries and flow lines will be on location with well. A burn pit will be provided for disposal of trash. Cuttings, drilling fluid and produced fluids will be put into the reserve pit and properly disposed of depending on amount and type of fluids.

Contractor will furnish restroom facilities on location.

There will be no air strips or camps.

Also, enclosed is a location layout showing approximate location of rig, pits and pipe racks and cut required to build this location.

Water supply will be San Juan River.

The location will be restored according to Bureau of Land Management standards. This work will begin when all related construction is finished.

Mr. Ross Lankford will be Southland Royalty Company's field representative supervising these operations.

Yours truly,

L. O. Van Ryan
District Production Manager

LOVR/dg



Southland Royalty Company

October 16, 1979

United States Geological Survey
P. O. Box 959
Farmington, New Mexico

Attention: District Engineer

Re: Blowout Preventer Plan

Dear Sir:

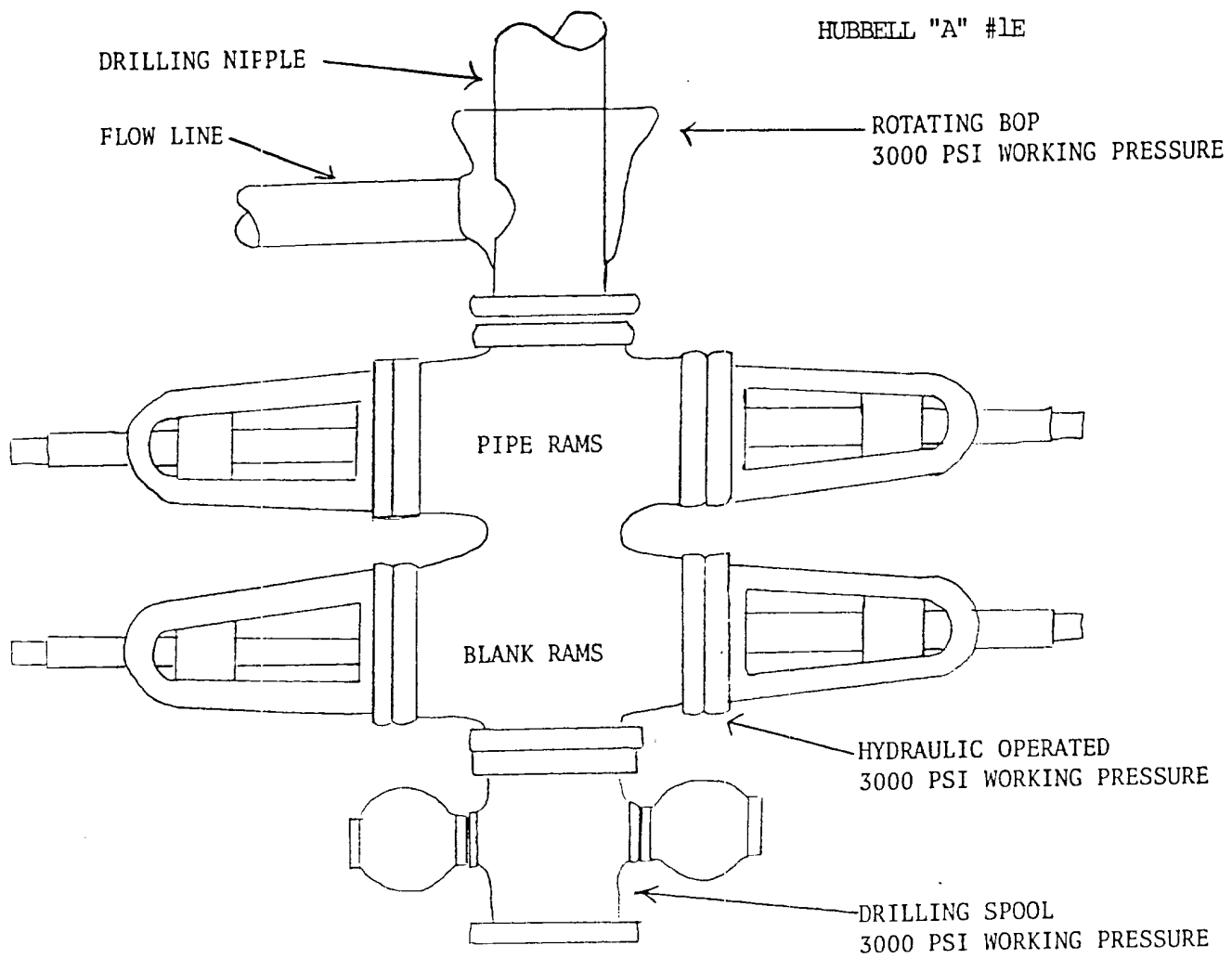
All drilling and completion rigs will be equipped with 6" or larger double hydraulic blowout preventers and a hydraulic closing unit with steel lines.

The preventer is 3000# working pressure and 6000# test.

All crews will be thoroughly trained in the operation of this preventer. The preventer will be tested frequently enough to insure proper operation.

Yours truly,



L. O. Van Ryan
District Production Manager



PREVENTERS AND SPOOLS ARE TO HAVE
THROUGH BORE OF 6" - 3000 PSI OR LARGER

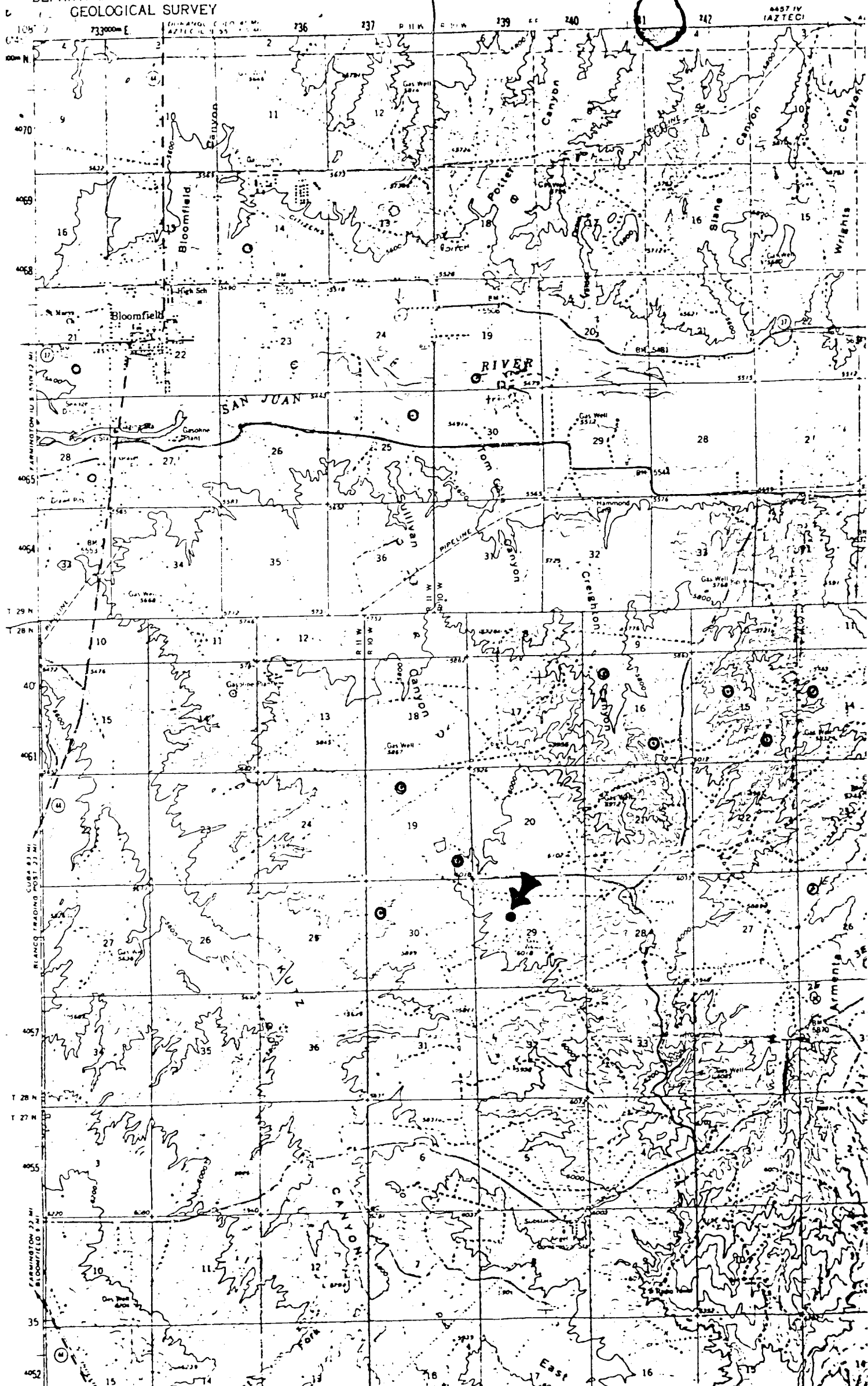
A hand-drawn map of the study area, oriented vertically. The map is divided into two main sections by a horizontal line. The top section is labeled 'A' at the top and 'C20' on the right. It contains a 'Type Rocks' label with arrows pointing to two rectangular boxes. A 'Layoutdown' label with an arrow points to a rectangular box. A 'WEST' label with an arrow points to the left. The bottom section is labeled 'A' at the bottom and 'C10' on the right. It contains a 'Stock Piles' label with an arrow pointing to a rectangular box. A 'K9' label with an arrow points to a rectangular box. A 'Ground Elev. 6069' label with an arrow points to a rectangular box. A 'Ground Elev. 6069' label with an arrow points to a rectangular box. A 'K mud Pits' label with an arrow points to a rectangular box. The map also includes a scale bar at the top and a north arrow at the bottom.

Vert. 1"=40'	A-A'	Horiz. 1"=100'
6080		
6070		
6000		

B-B'		4
6080		
6070		
6060		

Reserve
Pit
F70

[illegible][illegible]



PROPOSED LOCATION ●
EXISTING LOCATIONS ⊙
PROPOSED ROADS - - - - -
EXISTING ROADS —————

Vicinity Map for
SOUTHLAND ROYALTY CO. #1-E HUBBELL "A"
1820'FNL 1850'FWL Sec 29-T28N-R10W
SAN JUAN COUNTY, NEW MEXICO